

ABB BALDOR RELIANCE III

Customer information packet

WDNMM3546-4

.75KW, 1700RPM, 3PH, 60HZ, D80, 3436M, TENV, B3

Class - None

Division - Not Applicable

Specifications

Enclosure	TENV
Frame	D80
Frame Material	Steel
Frequency	60.00 Hz
Haz Area Class and Group	None
Haz Area Division	Not Applicable
Motor Letter Type	Three Phase
Output @ Frequency	.750 KW @ 60 HZ
Phase	3
Synchronous Speed @ Frequency	1800 RPM @ 60 HZ
Voltage @ Frequency	460.0 V @ 60 HZ
Agency Approvals	UR CSA
Ambient Temperature	40 °C
Auxiliary Box	NO AUXILLARY BOX
Auxiliary Box Lead Termination	None
Base Indicator	Rigid
Bearing Grease Type	Polyrex EM (-20F +300F)
Blower	None
Current @ Voltage	1.500 A @ 460.0 V
Design Code	D
Drip Cover	No Drip Cover
Duty Rating	CONT
Efficiency @ 100% Load	75.5 %
Electrically Isolated Bearing	Not Electrically Isolated
Feedback Device	NO FEEDBACK
Frame Prefix	D
Front Face Code	Standard
Front Shaft Indicator	None
Heater Indicator	No Heater
High Voltage Full Load Amps	1.5 a
Insulation Class	F

Part Detail

Revision	Q
Type	AC
Mech. spec.	34M821
Base	
Status	PRD/A
Elec. spec.	34WGR446
Layout	34LYM821
Eff. date	12-01-2025
CD Diagram	CD0006
Poles	04
Leads	3#18 Y
Proprietary	False
Created date	05-18-2016

Inverter Code	Not Inverter
KVA Code	K
Lifting Lugs	No Lifting Lugs
Locked Bearing Indicator	No Locked Bearing
Motor Lead Exit	Ko Box
Motor Lead Quantity/Wire Size	3 @ 18 AWG
Motor Lead Termination	Flying Leads
Motor Standards	IEC
Motor Type	3436M
Mounting Arrangement	B3
Number of Poles	4
Overall Length	12.00 IN
Power Factor	79
Product Family	Wash Down
Pulley End Bearing Type	Sealed Bearing
Pulley Face Code	Standard
Pulley Shaft Indicator	Standard
Rodent Screen	None
RoHS Status	ROHS COMPLIANT
Service Factor	1.00
Shaft Diameter	0.748 IN
Shaft Extension Location	Pulley End
Shaft Ground Indicator	No Shaft Grounding
Shaft Rotation	Reversible
Shaft Slinger Indicator	Shaft Slinger
Speed	1700 rpm
Speed Code	Single Speed
Starting Method	Direct on line
Thermal Device - Bearing	None
Thermal Device - Winding	None
Vibration Sensor Indicator	No Vibration Sensor
Winding Thermal 1	None
Winding Thermal 2	None

Nameplate

NP1575L			
CAT.NO.	WDNMM3546-4		
SPEC.	34M821R446G1		
IEC FRAME	D80	K.W.	.75 TE
VOLTS	460		
AMP	1.5		
RPM	1700	I.P.	
HZ	60	PH	3 CL F
SER.F.	1.00	DES	D CODE K
NEMA-NOM-EFF	75.5	PF	79
RATING	40C AMB-CONT		
CC	USABLE AT 208V		N/A
DE	6205	ODE	6203
SER. #			

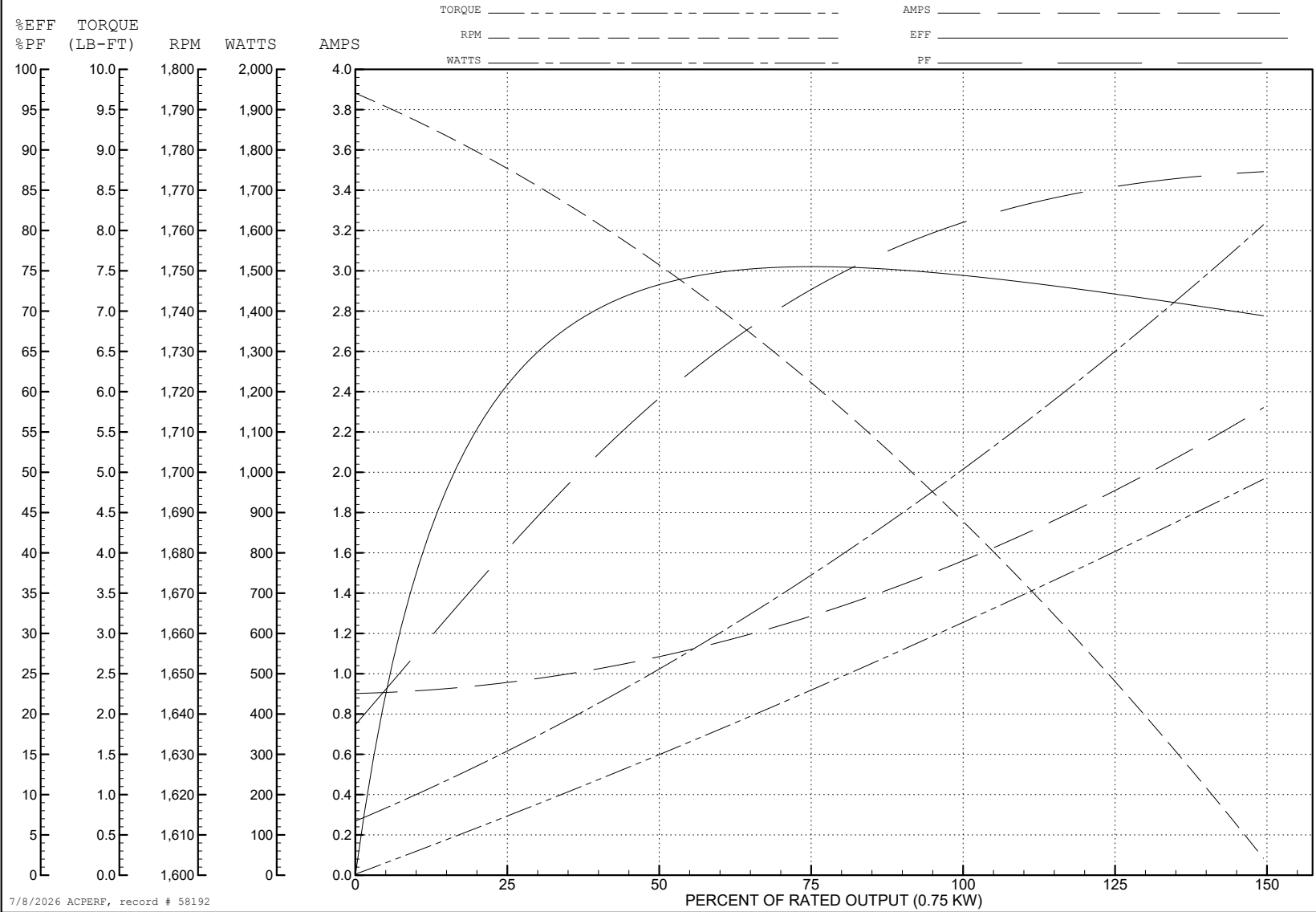
ABB Motors and Mechanical Inc.

WINDING # 34WGR446

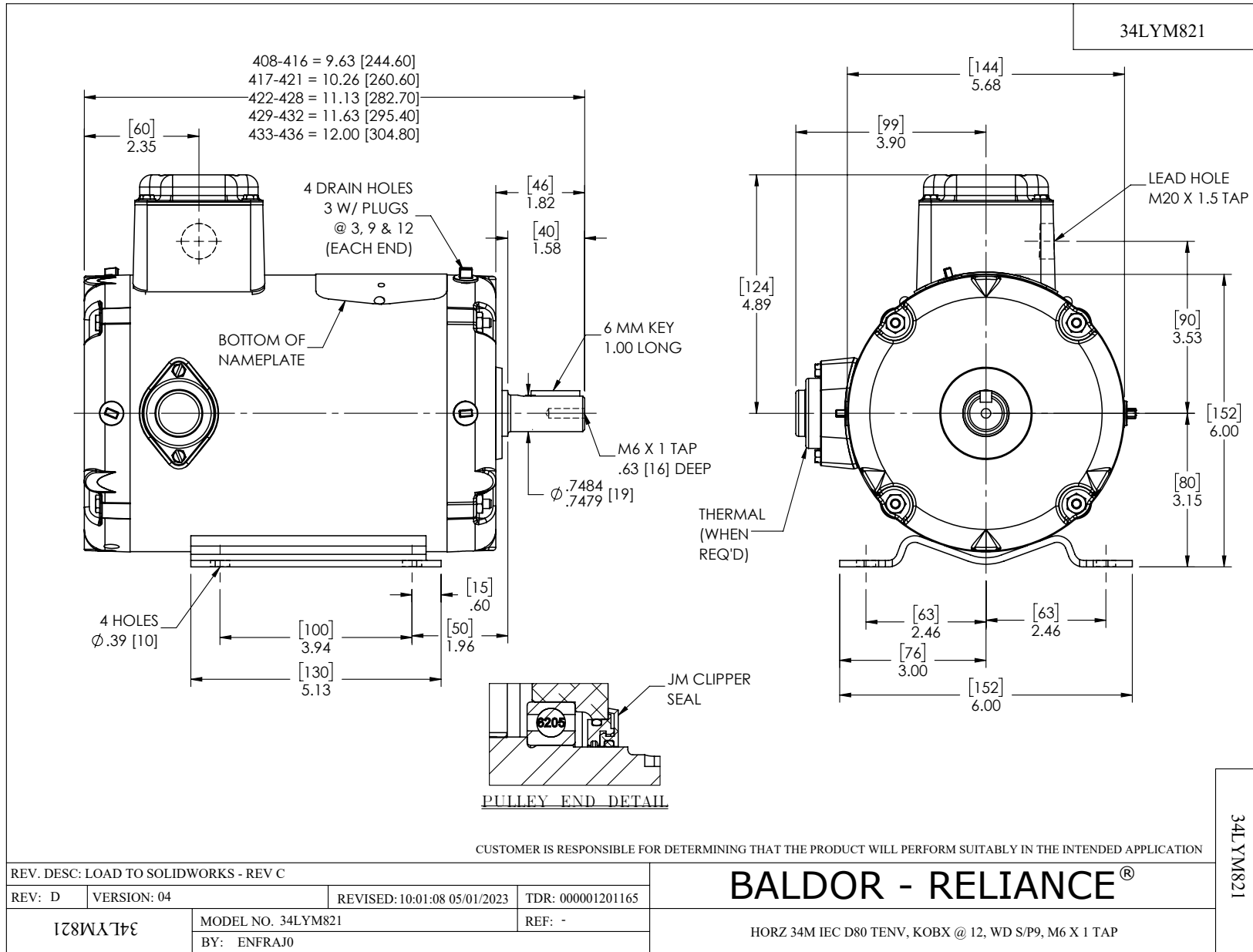
0.75 KW 3 PH 60 HZ 1700 RPM 460 V 3436M

Typical performance - not guaranteed values.

TORQUES (LB-FT): PO=9.71 PU=8.32 LR=12.83 LRA=10.99



7/8/2026 ACPERF, record # 58192



CD0006



NOTES:

1. THREE LEAD MOTOR MAY BE EITHER WYE CONNECTED OR DELTA CONNECTED.
2. INTERCHANGE ANY TWO LINE LEADS TO REVERSE ROTATION.
3. OPTIONAL THERMOSTATS ARE PROVIDED WHEN SPECIFIED.
4. ACTUAL NUMBER OF INTERNAL PARALLEL CIRCUITS MAY VARY.
5. LEAD COLORS ARE OPTIONAL. LEADS MUST BE NUMBERED AS SHOWN.

CD0006

REV. DESC: ADD CLASS CONN00000007		
REV. LTR: E	VERSION: 01	TDR: 000001099922
FILE: \AAA\00005\141	REVISED: 10:24:49 02/19/2019	BY: ENBRIRO
MTL: -		© □

BALDOR - RELIANCE®

3PH, SV, 3 LEADS, WYE OR DELTA CONNECTED

SH 1 of 1