



Customer information packet

WDM3561TP

3HP, 1645RPM, 3PH, 60HZ, 143T, 3540M, TEFC, F3

Class - None

Division - Not Applicable

Specifications

Enclosure	TEFC
Frame	143T
Frame Material	Steel
Frequency	60.00 Hz
Motor Letter Type	Three Phase
Output @ Frequency	3.000 HP @ 60 HZ
Phase	3
Synchronous Speed @ Frequency	1800 RPM @ 60 HZ
Voltage @ Frequency	230.0 V @ 60 HZ
	460.0 V @ 60 HZ
XP Class and Group	None
XP Division	Not Applicable
Agency Approvals	CSA
	UR
Ambient Temperature	40 °C
Auxillary Box	No Auxillary Box
Auxillary Box Lead Termination	None
Base Indicator	Rigid
Bearing Grease Type	Polyrex EM (-20F +300F)
Blower	None
Current @ Voltage	4.300 A @ 460.0 V
	8.600 A @ 230.0 V
	8.800 A @ 208.0 V
Design Code	D
Drip Cover	No Drip Cover
Duty Rating	CONT
Efficiency @ 100% Load	81.5 %
Electrically Isolated Bearing	Not Electrically Isolated
Feedback Device	NO FEEDBACK
Front Shaft Indicator	None
Heater Indicator	No Heater
High Voltage Full Load Amps	4.3 a

Part detail

Revision	J
Type	AC
Mech. spec.	35E2679
Base	
Status	PRD/A
Elec. spec.	35WGG301
Layout	35LYE2679
Eff. date	10-19-2023
CD Diagram	CD0005
Poles	04
Leads	9#18
Proprietary	False
Created date	10-01-2021

Insulation Class	H
Inverter Code	Not Inverter
KVA Code	H
Lifting Lugs	No Lifting Lugs
Locked Bearing Indicator	No Locked Bearing
Motor Lead Quantity/Wire Size	9 @ 18 AWG
Motor Lead Termination	Flying Leads
Motor Standards	NEMA
Motor Type	3540M
Mounting Arrangement	F3
Number of Poles	4
Overall Length	15.53 IN
Power Factor	80
Product Family	Wash Down
Pulley End Bearing Type	Sealed Bearing
Pulley Face Code	Standard
Pulley Shaft Indicator	Standard
Rodent Screen	None
Service Factor	1.00
Shaft Diameter	0.875 IN
Shaft Ground Indicator	No Shaft Grounding
Shaft Rotation	Reversible
Shaft Slinger Indicator	Shaft Slinger
Speed	1645 rpm
Speed Code	Single Speed
Starting Method	Direct on line
Thermal Device - Bearing	None
Thermal Device - Winding	None
Vibration Sensor Indicator	No Vibration Sensor
Winding Thermal 1	None
Winding Thermal 2	None

Nameplate

NP1496L									
CAT.NO.	WDM3561TP								
SPEC.	35E2679G301G1								
HP	3								
VOLTS	230/460								
AMP	8.6/4.3								
RPM	1655								
FRAME	143T		HZ	60		PH	3		
SER.F.	1.00	CODE	H	DES	D	CLASS	H		
NEMA-NOM-EFF	81.5	PF	80						
RATING	40C AMB-CONT								
CC									
DE	6205		ODE	6203					
ENCL	TEFC	SN							

AC Induction Motor Performance Data

Record # 86945

Preliminary Data Sheet

Winding: 35WGG301-R001		Type: 3540M	Enclosure: TEFC
Nameplate Data		460 V, 60 Hz: High Voltage Connection	
Rated Output (HP)	3	Full Load Torque	9.54 LB-FT
Volts	230/460	Start Configuration	direct on line
Full Load Amps	8.6/4.3	Breakdown Torque	34.9 LB-FT
R.P.M.	1655	Pull-up Torque	34.8 LB-FT
Hz	60 Phase	Locked-rotor Torque	39.2 LB-FT
NEMA Design Code	D KVA Code	Starting Current	26 A
Service Factor (S.F.)	1	No-load Current	2.25 A
NEMA Nom. Eff.	81.5 Power Factor	Line-line Res. @ 25°C	5.66 Ω
Rating - Duty	40C AMB-CONT	Temp. Rise @ Rated Load	105°C
		Locked-rotor Power Factor	70.6
		Rotor inertia	0.289 lb-ft ²

Load Characteristics 460 V, 60 Hz, 3 HP

% of Rated Load	25	50	75	100	125	150
Power Factor	37	59	72	79	84	86
Efficiency	80.2	85.1	85	82.7	79.5	75.5
Speed	1768	1736	1701	1658	1610	1553
Line amperes	2.39	2.83	3.46	4.29	5.27	6.47

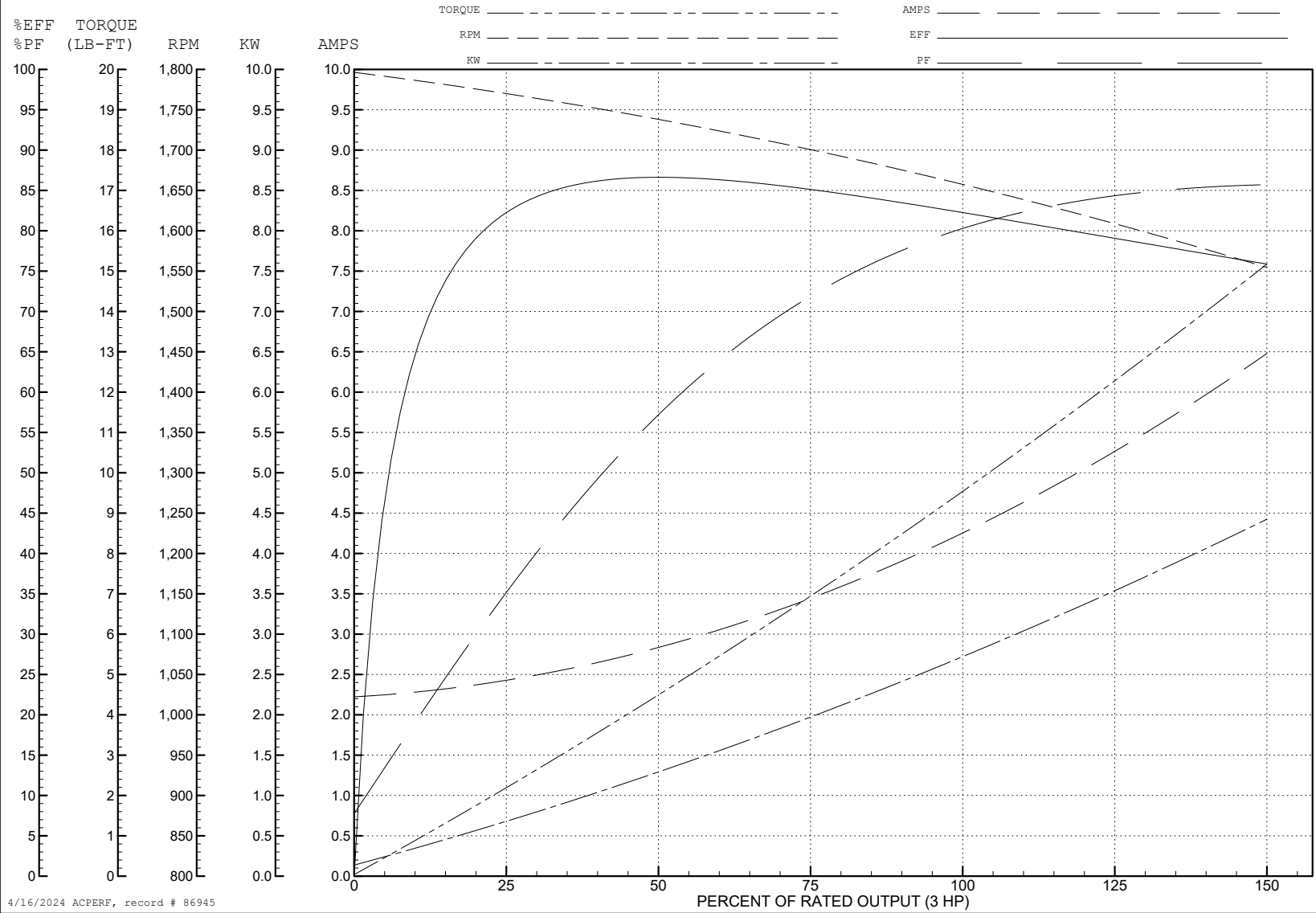
ABB Motors and Mechanical Inc.

WINDING # 35WGG301

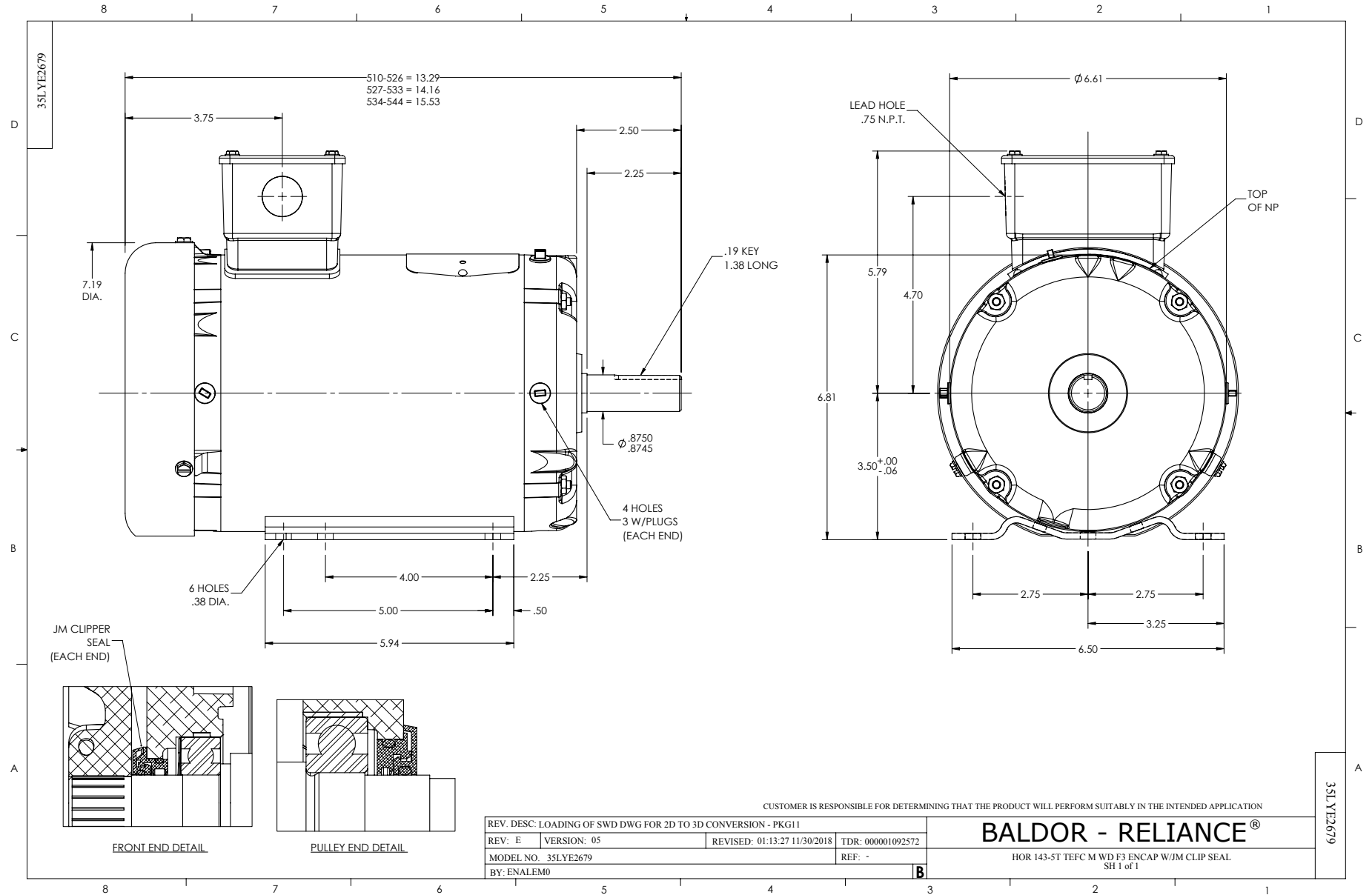
3 HP 3 PH 60 HZ 1655 RPM 460 V 3540M

Typical performance - not guaranteed values.

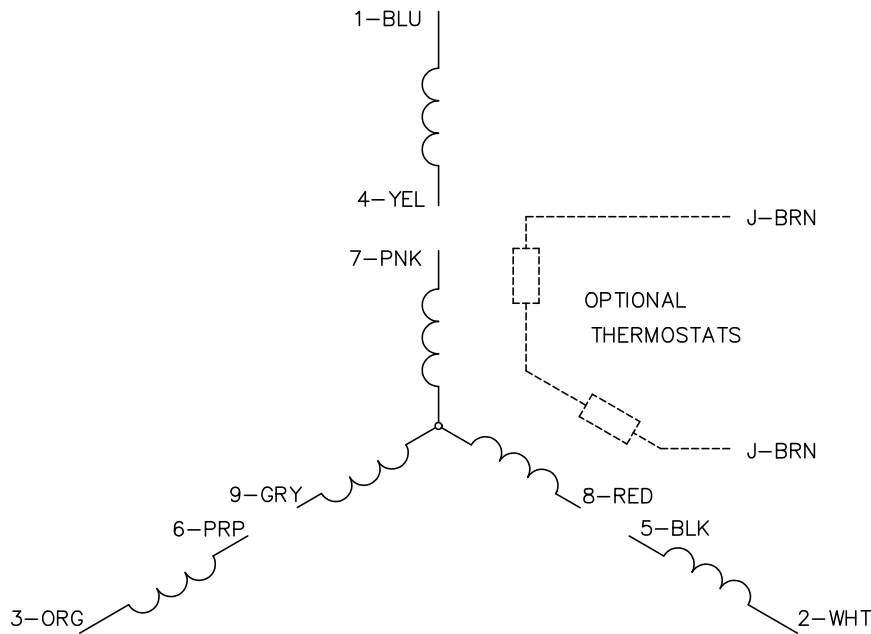
TORQUES (LB-FT): PO=34.9 PU=34.8 LR=39.2 LRA=26



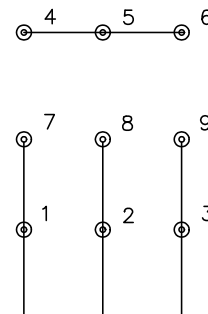
4/16/2024 ACPERF, record # 86945



CD0005

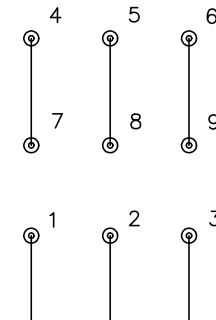


LOW VOLTAGE
(2Y)



LINE

HIGH VOLTAGE
(1Y)



LINE

NOTES:

1. INTERCHANGE ANY TWO LINE LEADS TO REVERSE ROTATION.
2. OPTIONAL THERMOSTATS ARE PROVIDED WHEN SPECIFIED.
3. ACTUAL NUMBER OF INTERNAL PARALLEL CIRCUITS MAY BE A MULTIPLE OF THOSE SHOWN ABOVE.
4. LEAD COLORS ARE OPTIONAL. LEADS MUST ALWAYS BE NUMBERED AS SHOWN.

CD0005

REV. DESC: REVISE TO SHOW OPTIONAL COLORS			
REV. LTR: E	BY: JLP	REVISED: 01/19/99 10:15	TDR: 0171435
S00000		FILE: AAA00005140	MDL: -
		MTL: -	

BALDOR ELECTRIC Co.

3PH, DV, 9 LEADS