



---

# Customer information packet

## WDM3558TP

2HP, 1710RPM, 3PH, 60HZ, 145T, 3528M, TEFC, F3

Class - None

Division - Not Applicable

## Specifications

Enclosure	TEFC
Frame	145T
Frame Material	Steel
Frequency	60.00 Hz
Haz Area Class and Group	None
Haz Area Division	Not Applicable
Motor Letter Type	Three Phase
Output @ Frequency	2.000 HP @ 60 HZ
Phase	3
Synchronous Speed @ Frequency	1800 RPM @ 60 HZ
Voltage @ Frequency	230.0 V @ 60 HZ 460.0 V @ 60 HZ
Agency Approvals	CSA UR
Ambient Temperature	40 °C
Auxillary Box	No Auxillary Box
Auxillary Box Lead Termination	None
Base Indicator	Rigid
Bearing Grease Type	Polyrex EM (-20F +300F)
Blower	None
Current @ Voltage	2.750 A @ 460.0 V 5.500 A @ 230.0 V 6.000 A @ 208.0 V
Design Code	D
Drip Cover	No Drip Cover
Duty Rating	CONT
Efficiency @ 100% Load	82.5 %
Electrically Isolated Bearing	Not Electrically Isolated
Feedback Device	NO FEEDBACK
Front Shaft Indicator	None
Heater Indicator	No Heater
High Voltage Full Load Amps	2.8 a

## Part detail

Revision	F
Type	AC
Mech. spec.	35E2679
Base	
Status	PRD/A
Elec. spec.	35WGG501
Layout	35LYE2679
Eff. date	10-19-2023
CD Diagram	CD0005
Poles	04
Leads	9#18 Y
Proprietary	False
Created date	07-05-2022

Insulation Class	F
Inverter Code	Not Inverter
KVA Code	H
Lifting Lugs	No Lifting Lugs
Locked Bearing Indicator	No Locked Bearing
Motor Lead Quantity/Wire Size	9 @ 18 AWG
Motor Lead Termination	Flying Leads
Motor Standards	NEMA
Motor Type	3528M
Mounting Arrangement	F3
Number of Poles	4
Overall Length	14.16 IN
Power Factor	82
Product Family	Wash Down
Pulley End Bearing Type	Sealed Bearing
Pulley Face Code	Standard
Pulley Shaft Indicator	Standard
Rodent Screen	None
Service Factor	1.15
Shaft Diameter	0.875 IN
Shaft Ground Indicator	No Shaft Grounding
Shaft Rotation	Reversible
Shaft Slinger Indicator	Shaft Slinger
Speed	1710 rpm
Speed Code	Single Speed
Starting Method	Direct on line
Thermal Device - Bearing	None
Thermal Device - Winding	None
Vibration Sensor Indicator	No Vibration Sensor
Winding Thermal 1	None
Winding Thermal 2	None

**Nameplate**

<b>NP1496L</b>									
<b>CAT.NO.</b>	WDM3558TP								
<b>SPEC.</b>	35E2679G501G1								
<b>HP</b>	2								
<b>VOLTS</b>	230/460								
<b>AMP</b>	5.5/2.75								
<b>RPM</b>	1710								
<b>FRAME</b>	145T		<b>HZ</b>	60		<b>PH</b>	3		
<b>SER.F.</b>	1.15	<b>CODE</b>	H	<b>DES</b>	D	<b>CLASS</b>	H		
<b>NEMA-NOM-EFF</b>	82.5	<b>PF</b>	82						
<b>RATING</b>	40C AMB-CONT								
<b>CC</b>									
<b>DE</b>	6205		<b>ODE</b>	6203					
<b>ENCL</b>	TEFC	<b>SN</b>							
	SFA 6.2/3.1								

**AC Induction Motor Performance Data**

Record # 95046

Typical performance - not guaranteed values

Winding: 35WGG501-R001		Type: 3528M	Enclosure: TEFC	
<b>Nameplate Data</b>			<b>460 V, 60 Hz: High Voltage Connection</b>	
Rated Output (HP)	2	Full Load Torque	6.15 LB-FT	
Volts	230/460	Start Configuration	direct on line	
Full Load Amps	5.5/2.75	Breakdown Torque	20.4 LB-FT	
R.P.M.	1710	Pull-up Torque	16 LB-FT	
Hz	60 Phase	Locked-rotor Torque	18 LB-FT	
NEMA Design Code	D KVA Code	Starting Current	17.8 A	
Service Factor (S.F.)	1.15	No-load Current	1.36 A	
NEMA Nom. Eff.	82.5 Power Factor	Line-line Res. @ 25°C	10.1 Ω	
Rating - Duty	40C AMB-CONT	Temp. Rise @ Rated Load	65°C	
S.F. Amps	6.2/3.1	Temp. Rise @ S.F. Load	81°C	
		Locked-rotor Power Factor	61.5	
		Rotor inertia	0.202 lb-ft <sup>2</sup>	

**Load Characteristics 460 V, 60 Hz, 2 HP**

% of Rated Load	25	50	75	100	125	150	S.F.
Power Factor	40	62	74	81	85	87	84
Efficiency	80.2	85.8	86	84.4	81.9	78.7	82.4
Speed	1781	1761	1738	1712	1681	1644	1682
Line amperes	1.47	1.77	2.21	2.74	3.37	4.12	3.12

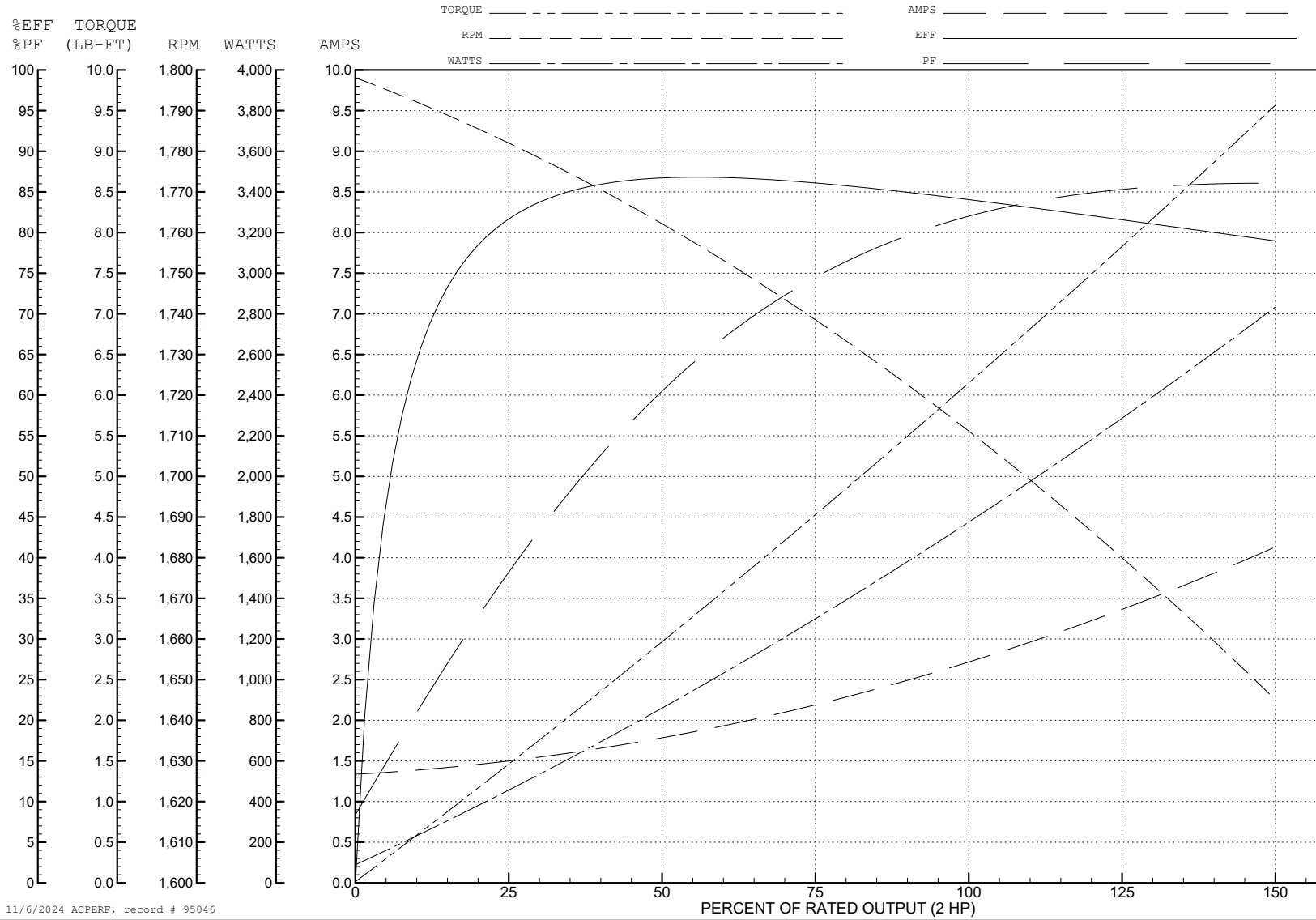
ABB Motors and Mechanical Inc.

WINDING # 35WGG501

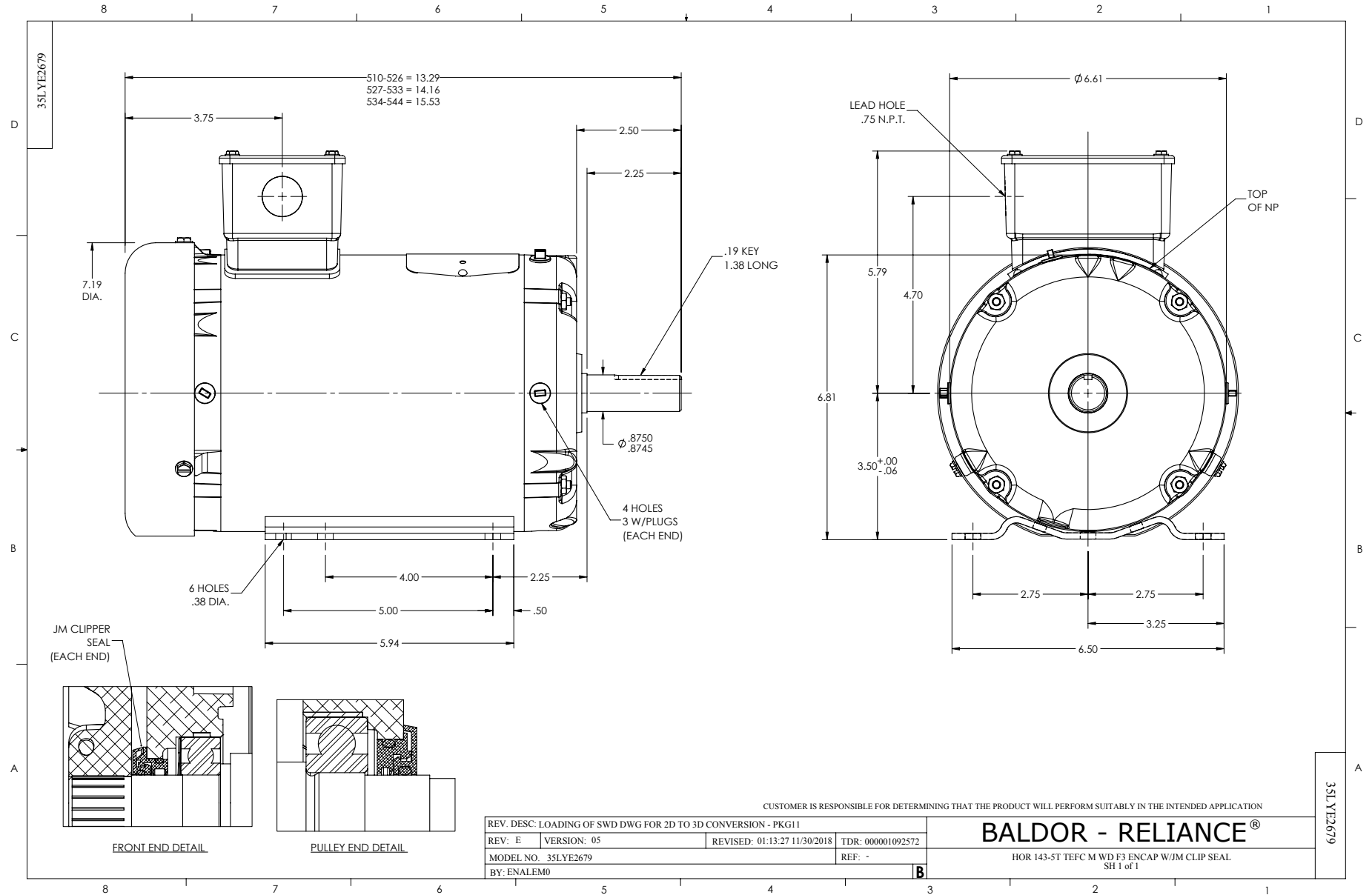
Typical performance - not guaranteed values.

2 HP 3 PH 60 HZ 1710 RPM 460 V 3528M

TORQUES (LB-FT): PO=20.4 PU=16 LR=18 LRA=17.8



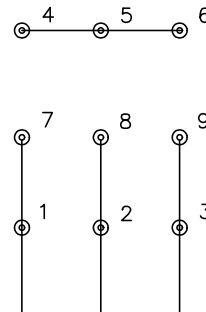
11/6/2024 ACPERF, record # 95046



CD0005

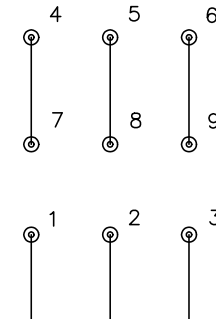


LOW VOLTAGE  
(2Y)



LINE

HIGH VOLTAGE  
(1Y)



LINE

NOTES:

1. INTERCHANGE ANY TWO LINE LEADS TO REVERSE ROTATION.
2. OPTIONAL THERMOSTATS ARE PROVIDED WHEN SPECIFIED.
3. ACTUAL NUMBER OF INTERNAL PARALLEL CIRCUITS MAY BE A MULTIPLE OF THOSE SHOWN ABOVE.
4. LEAD COLORS ARE OPTIONAL. LEADS MUST ALWAYS BE NUMBERED AS SHOWN.

CD0005

REV. DESC: REVISE TO SHOW OPTIONAL COLORS			
REV. LTR: E	BY: JLP	REVISED: 01/19/99 10:15	TDR: 0171435
S00000		FILE: AAA00005140	MDL: -
		MTL: -	

BALDOR ELECTRIC Co.

3PH, DV, 9 LEADS