

ABB BALDOR RELIANCE III

Customer information packet

WDL3514T

1.5HP, 1725RPM, 1PH, 60HZ, 143T, 3532LC, TEFC

Class - None

Division - Not Applicable

Specifications

Enclosure	TEFC
Frame	143T
Frame Material	Steel
Frequency	60.00 Hz
Haz Area Class and Group	None
Haz Area Division	Not Applicable
Motor Letter Type	Cap Start, Cap Run
Output @ Frequency	1.500 HP @ 60 HZ
Phase	1
Synchronous Speed @ Frequency	1800 RPM @ 60 HZ
Voltage @ Frequency	115.0 V @ 60 HZ 230.0 V @ 60 HZ
Agency Approvals	C UR US
Ambient Temperature	40 °C
Auxiliary Box	NO AUXILLARY BOX
Auxiliary Box Lead Termination	None
Base Indicator	Rigid
Bearing Grease Type	Polyrex EM (-20F +300F)
Blower	None
Current @ Voltage	12.200 A @ 115.0 V 6.100 A @ 230.0 V
Design Code	L
Drip Cover	No Drip Cover
Duty Rating	CONT
Efficiency @ 100% Load	80.0 %
Electrically Isolated Bearing	Not Electrically Isolated
Feedback Device	NO FEEDBACK
Front Shaft Indicator	None
Heater Indicator	No Heater
High Voltage Full Load Amps	6.1 a
Insulation Class	F
Inverter Code	Not Inverter

Part Detail

Revision	A
Type	AC
Mech. spec.	35E2676
Base	
Status	PRD/A
Elec. spec.	35WGG242
Layout	35LYE2676
Eff. date	05-20-2025
CD Diagram	CD0055
Poles	04
Leads	6#18
Proprietary	False
Created date	09-26-2024

KVA Code	H
Lifting Lugs	No Lifting Lugs
Locked Bearing Indicator	Locked Bearing
Motor Lead Quantity/Wire Size	6 @ 18 AWG
Motor Lead Termination	Flying Leads
Motor Standards	NEMA
Motor Type	3532LC
Mounting Arrangement	F1
Number of Poles	4
Overall Length	14.16 IN
Power Factor	98
Product Family	Wash Down
Pulley End Bearing Type	Sealed Bearing
Pulley Face Code	Standard
Pulley Shaft Indicator	Standard
Rodent Screen	None
Service Factor	1.15
Shaft Diameter	0.875 IN
Shaft Ground Indicator	No Shaft Grounding
Shaft Rotation	Fixed Opposite Standard
Shaft Slinger Indicator	Shaft Slinger
Speed	1725 rpm
Speed Code	Single Speed
Starting Method	Direct on line
Thermal Device - Bearing	None
Thermal Device - Winding	None
Vibration Sensor Indicator	No Vibration Sensor
Winding Thermal 1	None
Winding Thermal 2	None

Nameplate

NP1496L									
CAT.NO.	WDL3514T								
SPEC.	35E2676G242								
HP	1.5								
VOLTS	115/230								
AMP	12.2/6.1								
RPM	1725								
FRAME	143T		HZ	60			PH	1	
SER.F.	1.15	CODE	H	DES	L	CLASS	F		
NEMA-NOM-EFF	80	PF	98						
RATING	40C AMB-CONT								
CC									
DE	6205	ODE	6203						
ENCL	TEFC	SN							

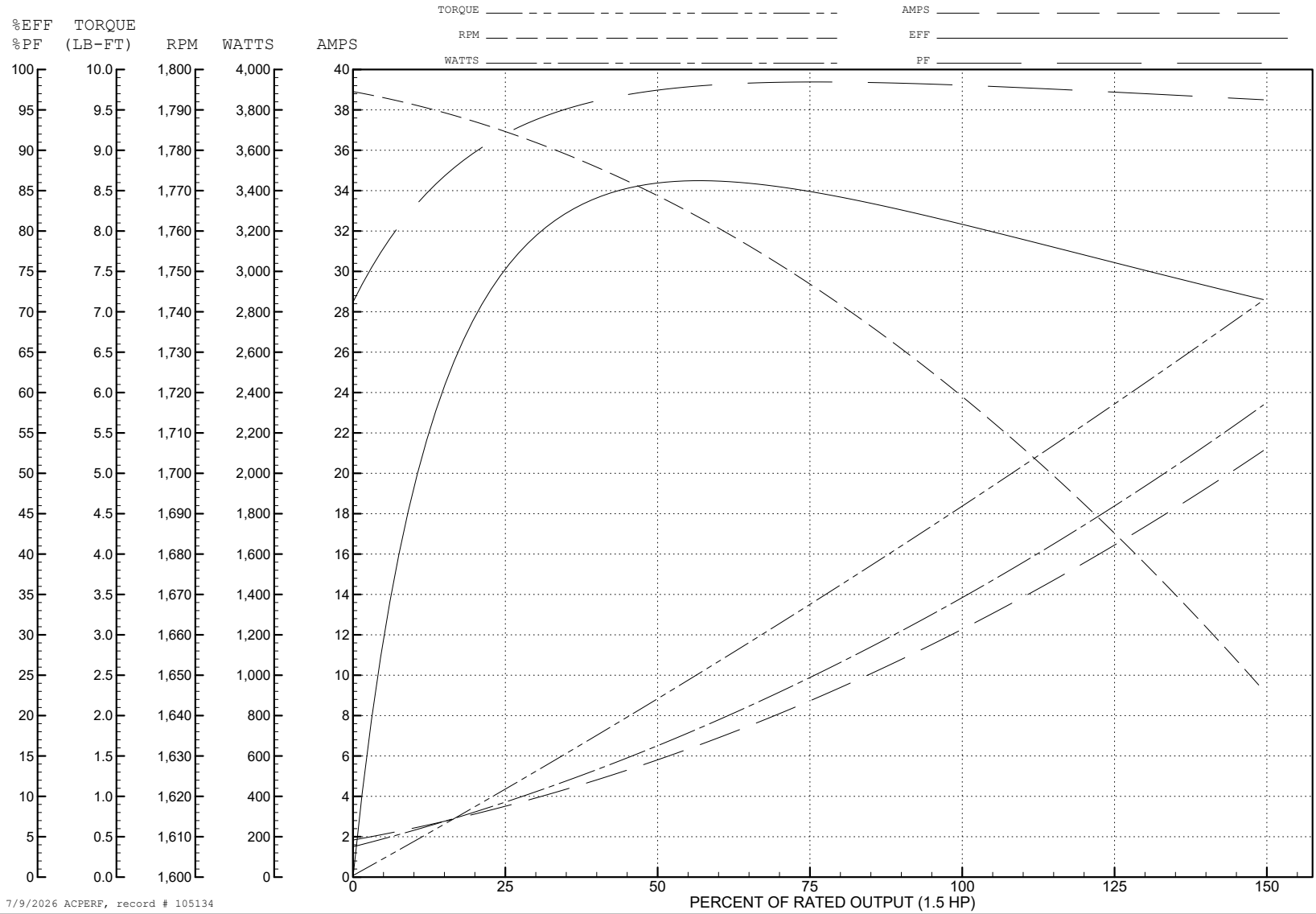
ABB Motors and Mechanical Inc.

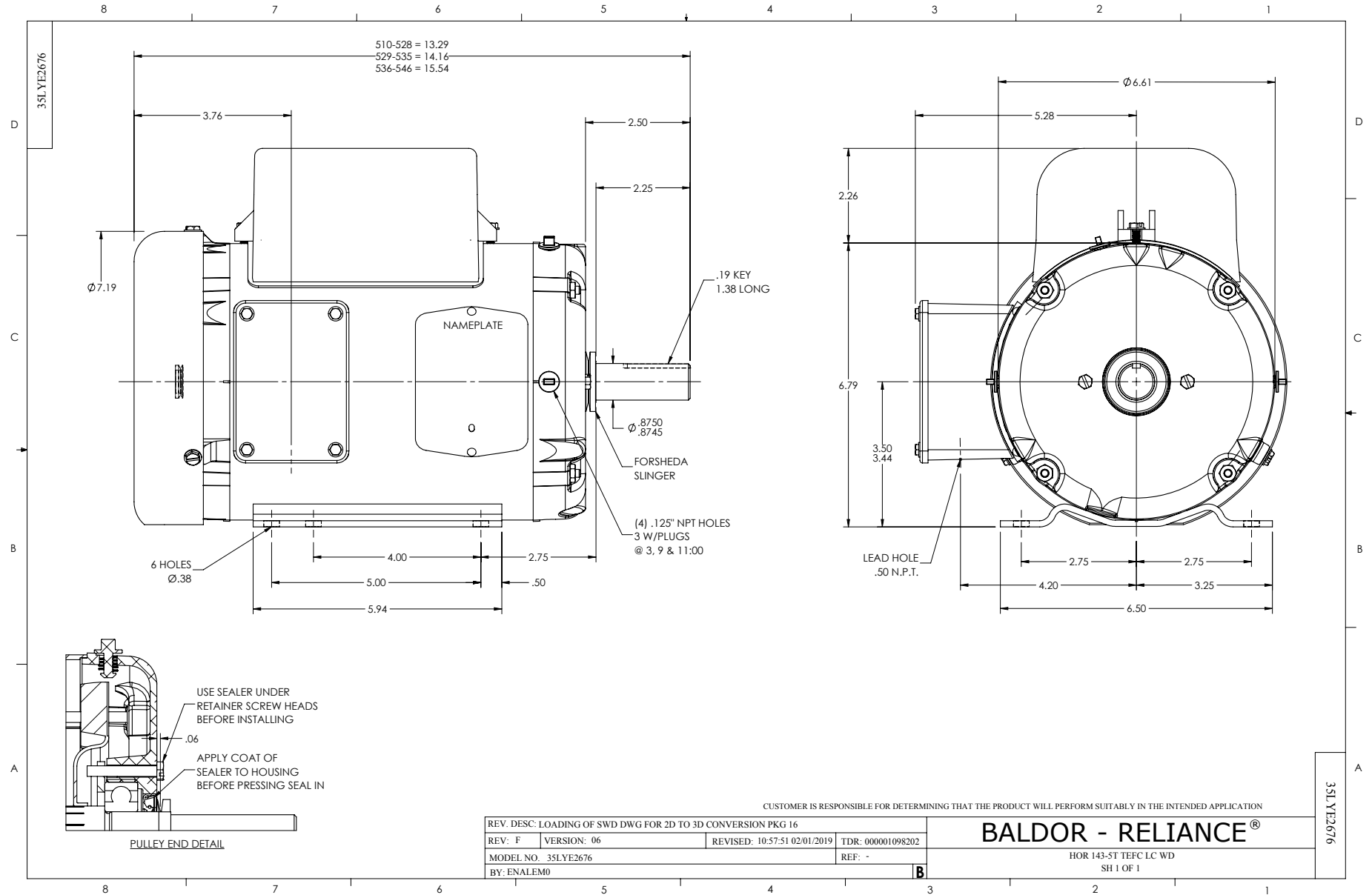
WINDING # 35WGG242

Typical performance - not guaranteed values.

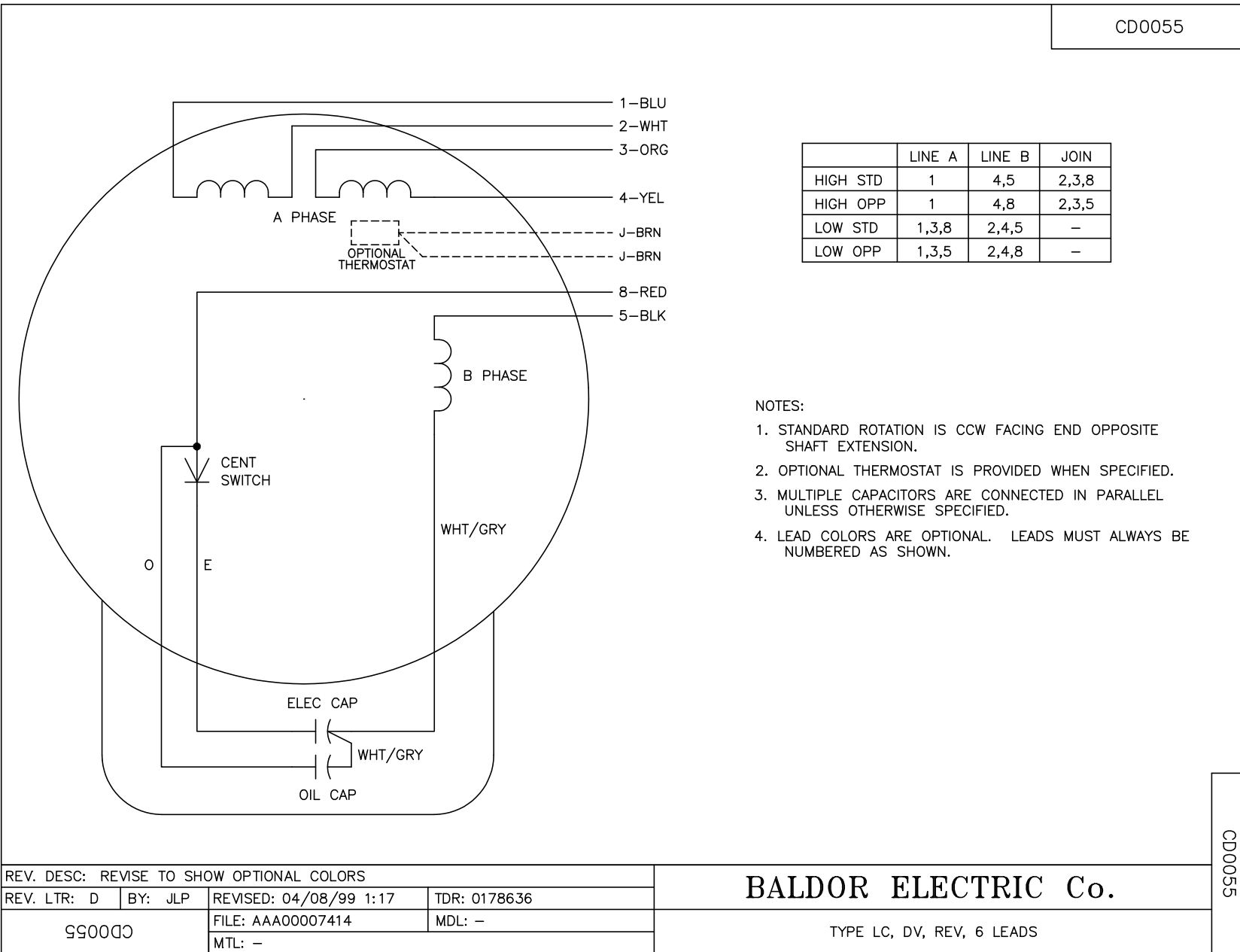
1.5 HP 1 PH 60 HZ 1725 RPM 115 V 3532LC

TORQUES (LB-FT): PO=9.9 PU=8.1 LR=13 LRA=88





CD0055



CD0055

REV. DESC: REVISE TO SHOW OPTIONAL COLORS			
REV. LTR: D	BY: JLP	REVISED: 04/08/99 1:17	TDR: 0178636
C00000		FILE: AAA00007414	MDL: -
		MTL: -	

BALDOR ELECTRIC Co.

TYPE LC, DV, REV, 6 LEADS