

ABB BALDOR RELIANCE III

Customer information packet

WDL3507

.75HP, 1750RPM, 1PH, 60HZ, 56, 3522L, TEFC, F1

Class - None

Division - Not Applicable

Specifications

Enclosure	TEFC
Frame	56
Frame Material	Steel
Frequency	60.00 Hz
Haz Area Class and Group	None
Haz Area Division	Not Applicable
Motor Letter Type	Cap Start, Induction Run
Output @ Frequency	.750 HP @ 60 HZ
Phase	1
Synchronous Speed @ Frequency	1800 RPM @ 60 HZ
Voltage @ Frequency	115.0 V @ 60 HZ 230.0 V @ 60 HZ
Agency Approvals	CSA UR
Ambient Temperature	40 °C
Auxiliary Box	NO AUXILLARY BOX
Auxiliary Box Lead Termination	None
Base Indicator	Rigid
Bearing Grease Type	Polyrex EM (-20F +300F)
Blower	None
Current @ Voltage	5.000 A @ 230.0 V 10.000 A @ 115.0 V
Design Code	N
Drip Cover	No Drip Cover
Duty Rating	CONT
Efficiency @ 100% Load	70.0 %
Electrically Isolated Bearing	Not Electrically Isolated
Feedback Device	NO FEEDBACK
Front Shaft Indicator	None
Heater Indicator	No Heater
High Voltage Full Load Amps	5.0 a
Insulation Class	F

Part Detail

Revision	F
Type	AC
Mech. spec.	35J271
Base	
Status	PRD/A
Elec. spec.	35WGG393
Layout	35LYJ271
Eff. date	06-25-2026
CD Diagram	CD0001
Poles	04
Leads	6#18
Proprietary	False
Created date	08-01-2022

Inverter Code	Not Inverter
KVA Code	L
Lifting Lugs	No Lifting Lugs
Locked Bearing Indicator	No Locked Bearing
Motor Lead Quantity/Wire Size	6 @ 18 AWG
Motor Lead Termination	Flying Leads
Motor Standards	NEMA
Motor Type	3522L
Mounting Arrangement	F1
Number of Poles	4
Overall Length	13.22 IN
Power Factor	69
Product Family	Wash Down
Pulley End Bearing Type	Sealed Bearing
Pulley Face Code	Standard
Pulley Shaft Indicator	Standard
Rodent Screen	None
Service Factor	1.25
Shaft Diameter	0.625 IN
Shaft Ground Indicator	No Shaft Grounding
Shaft Rotation	Reversible
Shaft Slinger Indicator	Shaft Slinger
Speed	1750 rpm
Speed Code	Single Speed
Starting Method	Direct on line
Thermal Device - Bearing	None
Thermal Device - Winding	None
Vibration Sensor Indicator	No Vibration Sensor
Winding Thermal 1	None
Winding Thermal 2	None

Nameplate

NP1496L										
CAT.NO.	WDL3507									
SPEC.	35J271G393									
HP	.75									
VOLTS	115/230									
AMP	10/5									
RPM	1750									
FRAME	56		HZ	60		PH	1			
SER.F.	1.25	CODE	L	DES	N	CLASS	F			
NEMA-NOM-EFF	70	PF	69							
RATING	40C AMB-CONT									
CC										
DE	6205	ODE	6203							
ENCL	TEFC	SN								
	SFA 12.6/6.3									

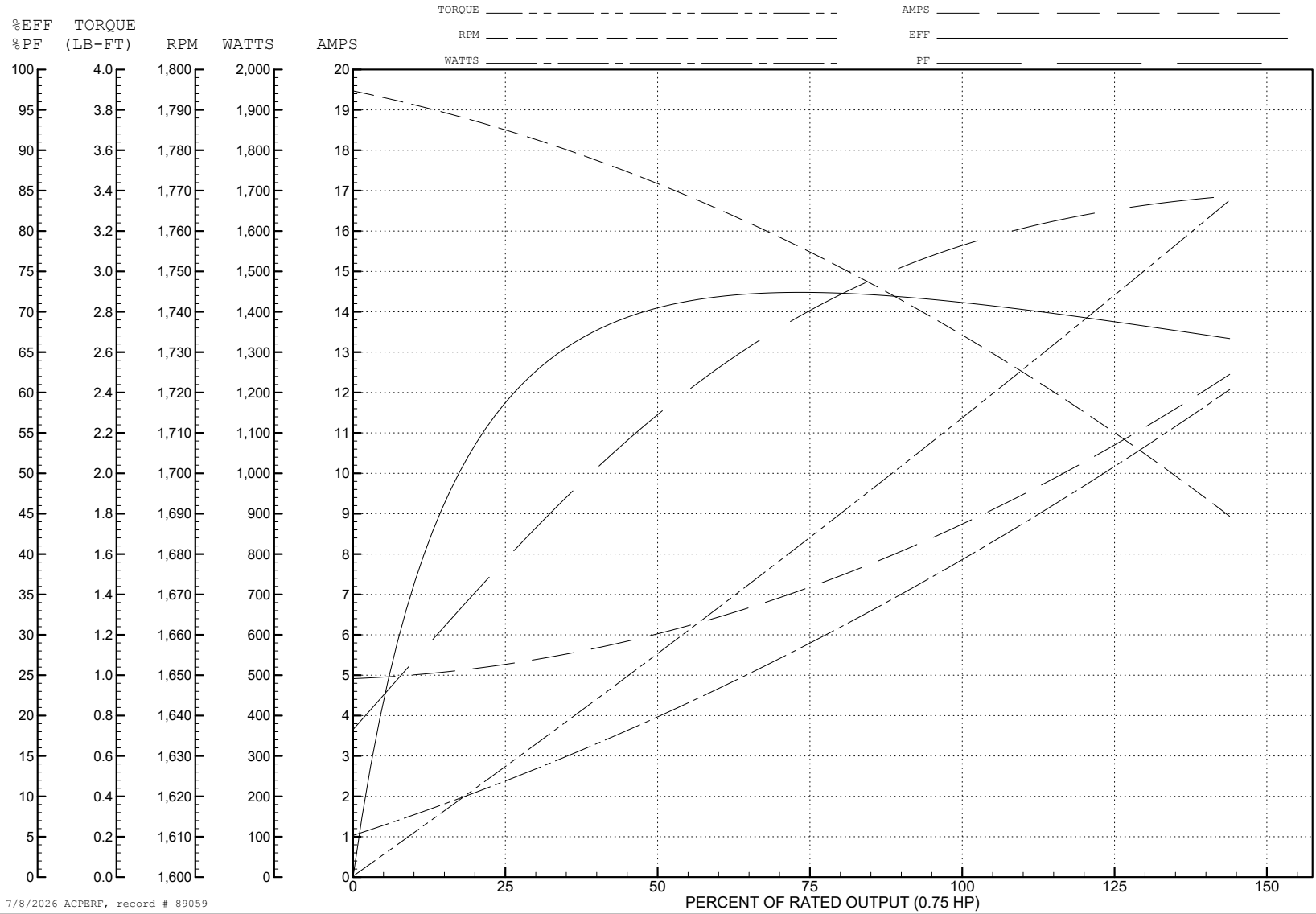
ABB Motors and Mechanical Inc.

WINDING # 35WGG393

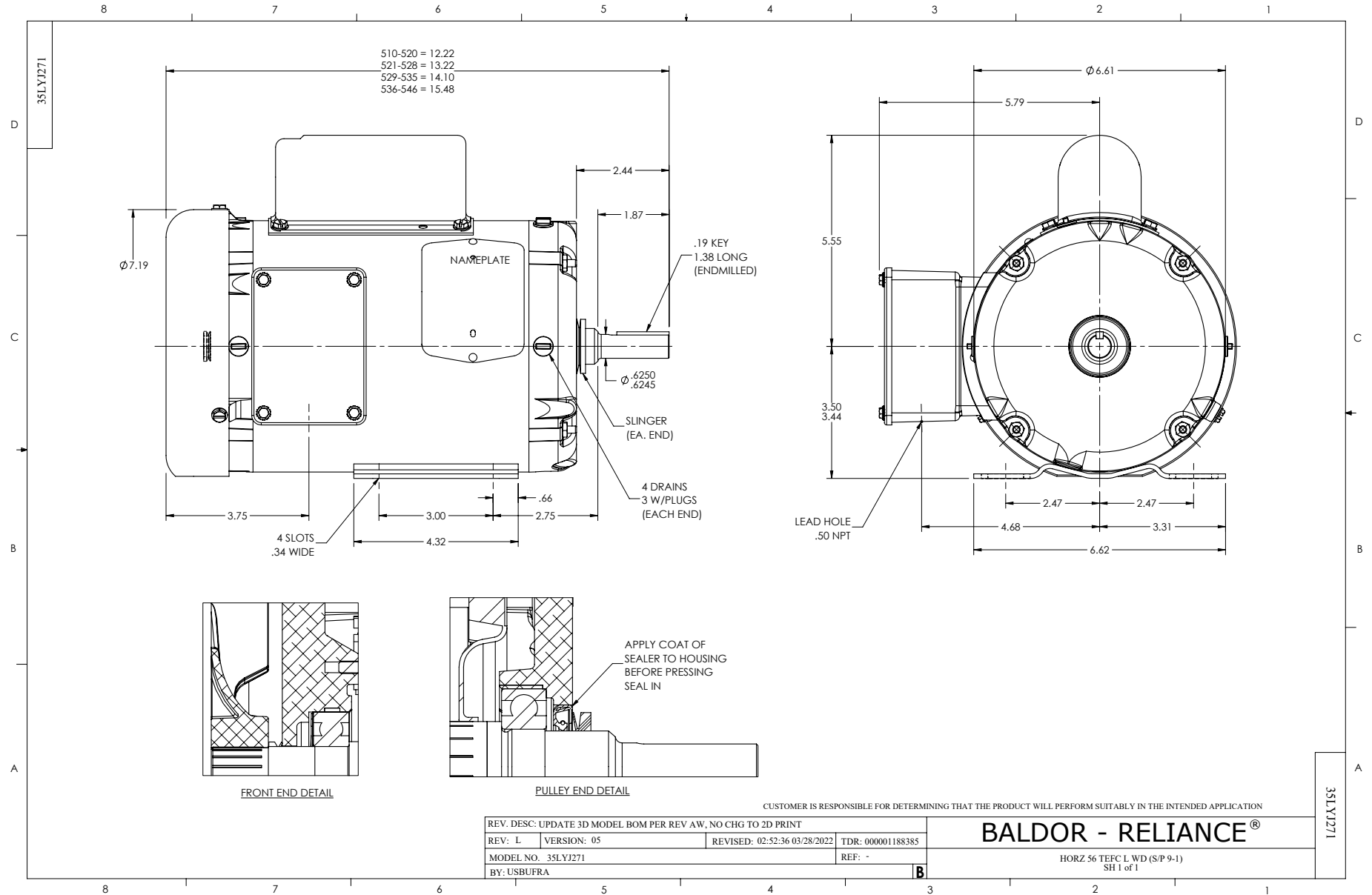
Typical performance - not guaranteed values.

0.75 HP 1 PH 60 HZ 1720 RPM 115 V 3522L

TORQUES (LB-FT): PO=4.86 PU=4 LR=8.91 LRA=59.09



7/8/2026 ACPERF, record # 89059



CD0001

