

**BALDOR® • RELIANCE™**

---

# Customer information packet

## WCL1409T

5HP, 3450RPM, 1PH, 60HZ, 184TCZ, 3634L, OPEN

Class - None

Division - Not Applicable

## Specifications

Enclosure	OPEN
Frame	184TCZ
Frame Material	Steel
Frequency	60.00 Hz
Haz Area Class and Group	None
Haz Area Division	Not Applicable
Motor Letter Type	Cap Start, Induction Run
Output @ Frequency	5.000 HP @ 60 HZ
Phase	1
Synchronous Speed @ Frequency	3600 RPM @ 60 HZ
Voltage @ Frequency	230.0 V @ 60 HZ
Agency Approvals	CSA UR
Ambient Temperature	40 °C
Auxillary Box	No Auxillary Box
Auxillary Box Lead Termination	None
Base Indicator	Rigid
Bearing Grease Type	Polyrex EM (-20F +300F)
Blower	None
Current @ Voltage	24.000 A @ 208.0 V 23.000 A @ 230.0 V
Design Code	L
Drip Cover	No Drip Cover
Duty Rating	CONT
Efficiency @ 100% Load	75.0 %
Electrically Isolated Bearing	Not Electrically Isolated
Feedback Device	NO FEEDBACK
Front Face Code	Standard
Front Shaft Indicator	None
Heater Indicator	No Heater
High Voltage Full Load Amps	23.0 a
Insulation Class	F

## Part detail

Revision	AH
Type	AC
Mech. spec.	36E775
Base	
Status	PRD/A
Elec. spec.	36WG0190
Layout	36LYE775
Eff. date	05-09-2024
CD Diagram	CD0017A01
Poles	02
Leads	2#10 A PH,2#16 B PH
Proprietary	False
Created date	01-01-0001

<b>Inverter Code</b>	Not Inverter
<b>KVA Code</b>	F
<b>Lifting Lugs</b>	No Lifting Lugs
<b>Locked Bearing Indicator</b>	Locked Bearing
<b>Motor Lead Exit</b>	Ko Box
<b>Motor Lead Quantity/Wire Size</b>	2 @ 10 AWG, A PH
<b>Motor Lead Termination</b>	Flying Leads
<b>Motor Standards</b>	NEMA
<b>Motor Type</b>	3634L
<b>Mounting Arrangement</b>	F1
<b>Number of Poles</b>	2
<b>Overall Length</b>	19.69 IN
<b>Power Factor</b>	88
<b>Product Family</b>	General Purpose
<b>Pulley End Bearing Type</b>	Ball
<b>Pulley Face Code</b>	C-Face
<b>Pulley Shaft Indicator</b>	Tapped & Key
<b>Rodent Screen</b>	Included
<b>Service Factor</b>	1.15
<b>Shaft Diameter</b>	0.875 IN
<b>Shaft Extension Location</b>	Pulley End
<b>Shaft Ground Indicator</b>	No Shaft Grounding
<b>Shaft Rotation</b>	Reversible
<b>Shaft Slinger Indicator</b>	No Slinger
<b>Speed</b>	3450 rpm
<b>Speed Code</b>	Single Speed
<b>Starting Method</b>	Direct on line
<b>Thermal Device - Bearing</b>	None
<b>Thermal Device - Winding</b>	None
<b>Vibration Sensor Indicator</b>	No Vibration Sensor
<b>Winding Thermal 1</b>	None
<b>Winding Thermal 2</b>	None

**Nameplate**

<b>NP1256L</b>									
<b>CAT.NO.</b>	WCL1409T								
<b>SPEC.</b>	36E775-190								
<b>HP</b>	5								
<b>VOLTS</b>	230								
<b>AMP</b>	23								
<b>RPM</b>	3450								
<b>FRAME</b>	184TCZ	<b>HZ</b>	60	<b>PH</b>	1				
<b>SER.F.</b>	1.15	<b>CODE</b>	F	<b>DES</b>	L	<b>CLASS</b>	F		
<b>NEMA-NOM-EFF</b>	75	<b>PF</b>	88						
<b>RATING</b>	40C AMB-CONT								
<b>CC</b>									
<b>DE</b>	6207	<b>ODE</b>	6205						
<b>ENCL</b>	OPEN	<b>SN</b>							

**AC Induction Motor Performance Data**

Record # 20846

Typical performance - not guaranteed values

Winding: 36WG0190-R002		Type: 3634L	Enclosure: OPEN	
<b>Nameplate Data</b>			<b>230 V, 60 Hz: Single Voltage Motor</b>	
Rated Output (HP)	5	Full Load Torque	7.6 LB-FT	
Volts	230	Start Configuration	direct on line	
Full Load Amps	23	Breakdown Torque	18.7 LB-FT	
R.P.M.	3450	Pull-up Torque	16 LB-FT	
Hz	60 Phase	Locked-rotor Torque	18 LB-FT	
NEMA Design Code	L KVA Code	Starting Current	125 A	
Service Factor (S.F.)	1.15	No-load Current	9 A	
NEMA Nom. Eff.	75 Power Factor	Line-line Res. @ 25°C	0.338 Ω A Ph 1.16 Ω B Ph	
Rating - Duty	40C AMB-CONT	Temp. Rise @ Rated Load	75°C	
S.F. Amps		Temp. Rise @ S.F. Load	90°C	

**Load Characteristics 230 V, 60 Hz, 5 HP**

% of Rated Load	25	50	75	100	125	150	S.F.
Power Factor	59	76	84	88	90	90	0
Efficiency	63	74.5	77.7	78	76.5	73.6	0
Speed	3559	3524	3485	3440	3387	3318	0
Line amperes	10.9	14.3	18.6	23.6	29.6	36.8	27.2

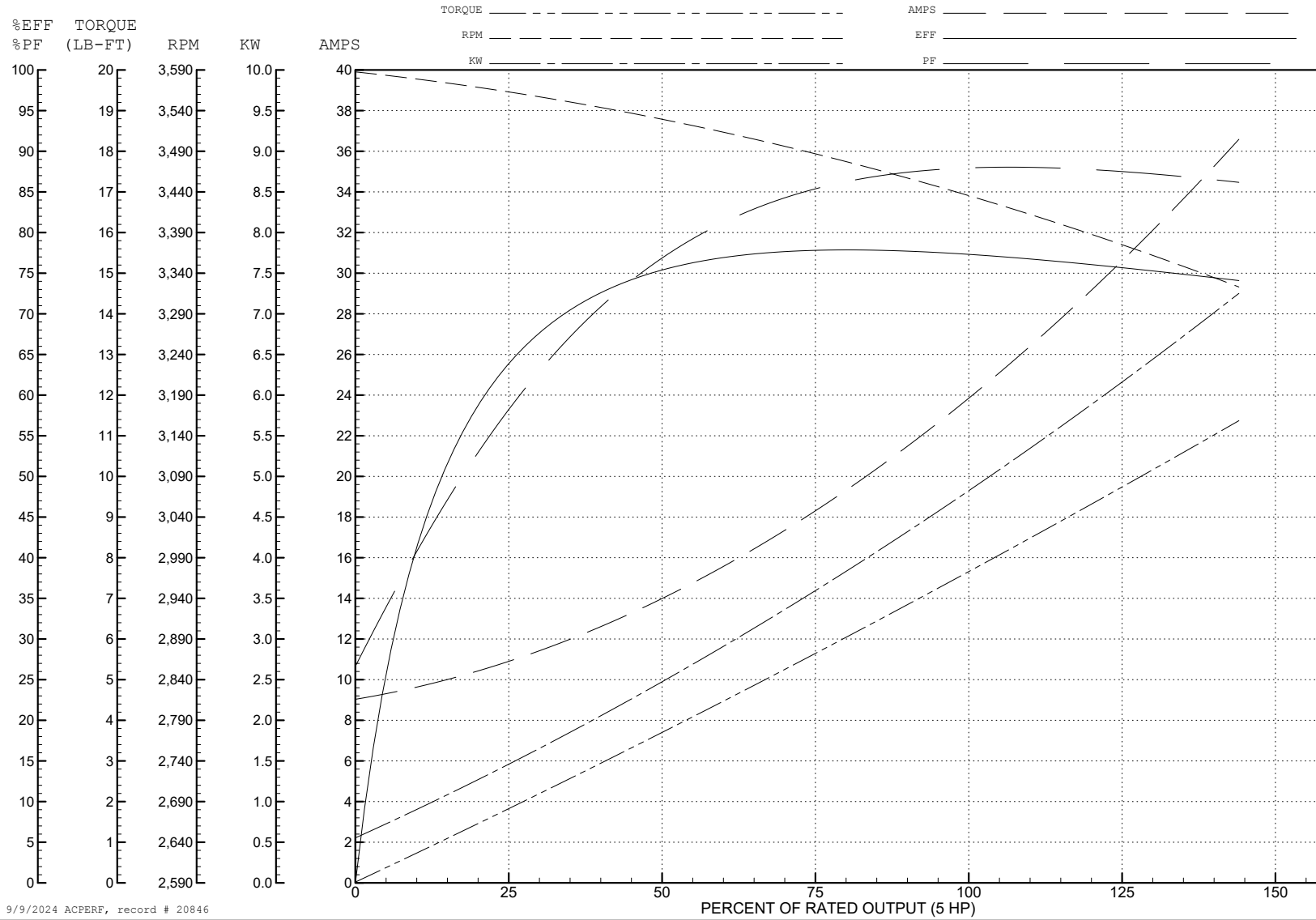
ABB Motors and Mechanical Inc.

WINDING # 36WG0190

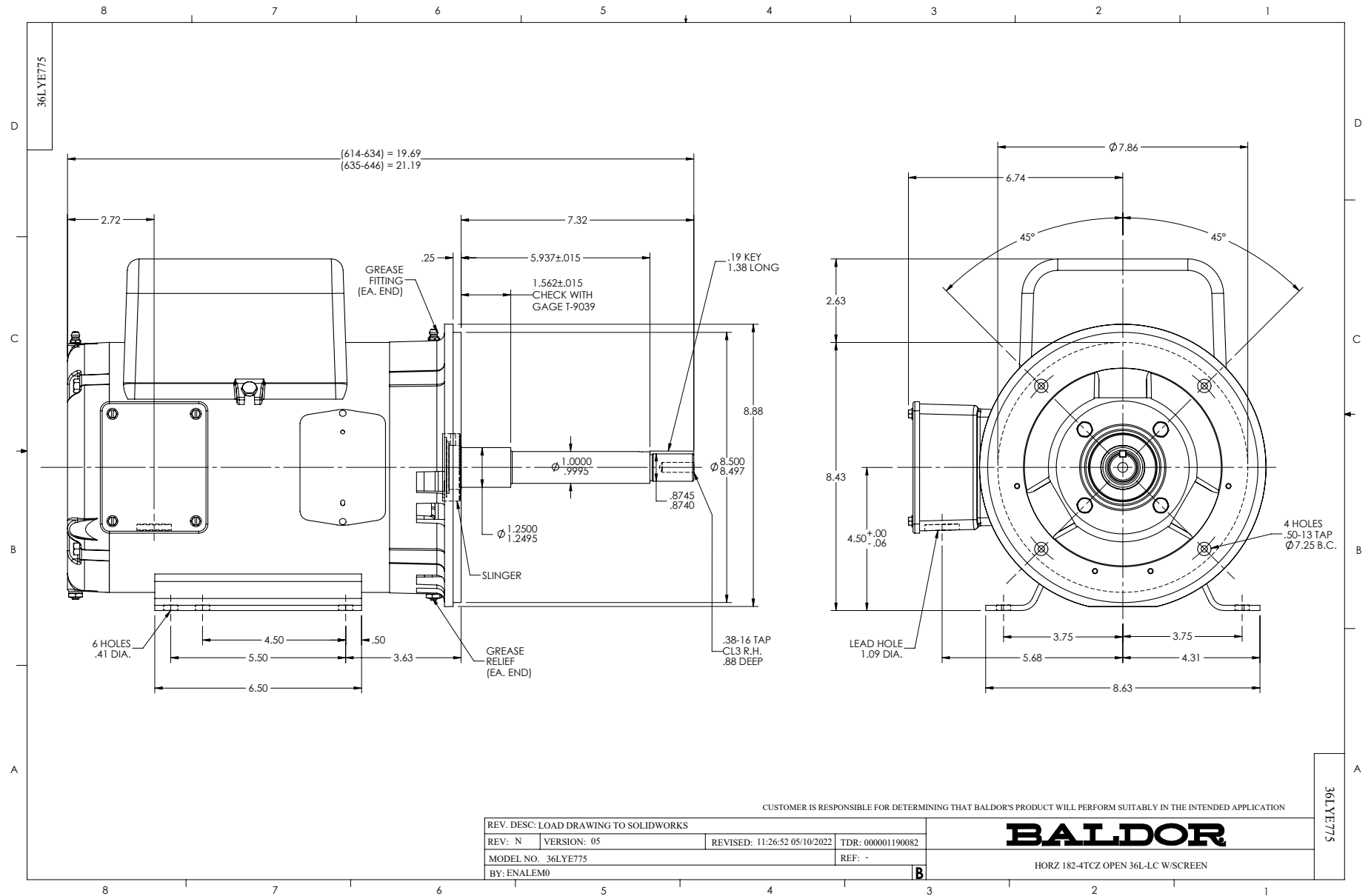
5 HP 1 PH 60 HZ 3450 RPM 230 V 3634L

Typical performance - not guaranteed values.

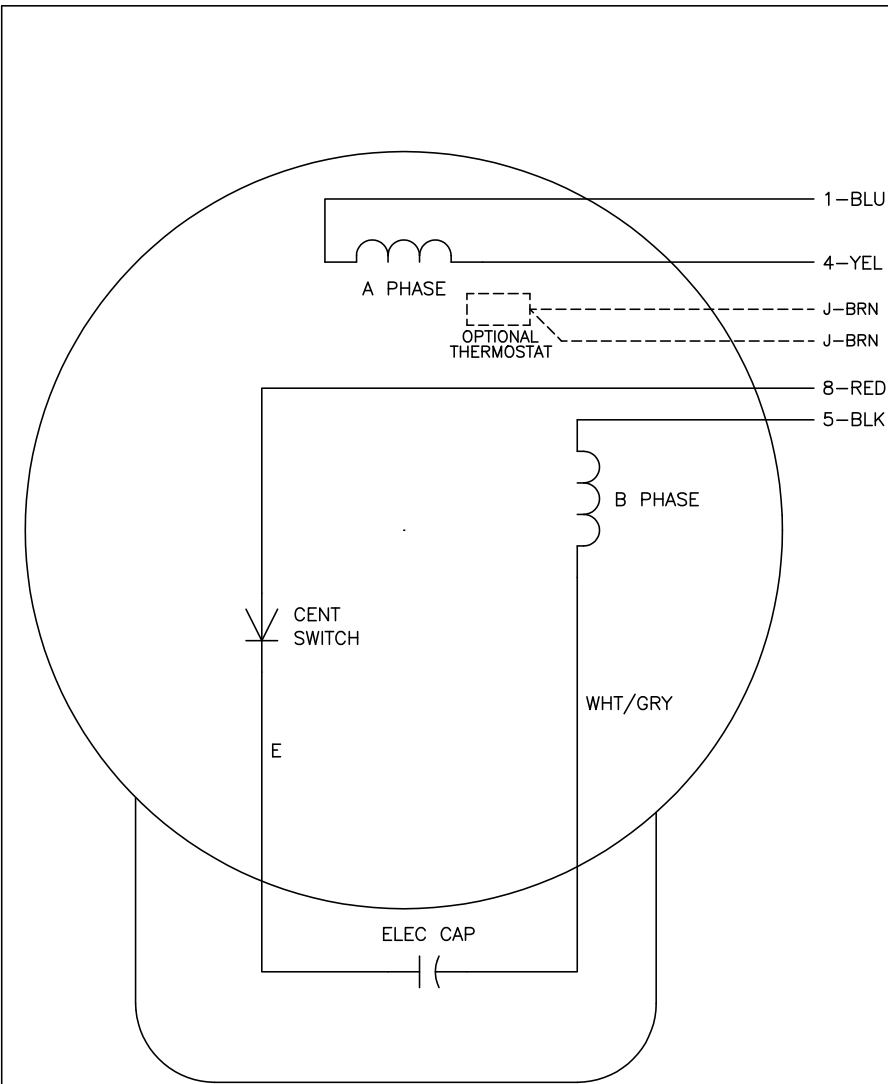
TORQUES (LB-FT): PO=18.7 PU=16 LR=18 LRA=125



9/9/2024 ACPERF, record # 20846



CD0017A01



	LINE A	LINE B
STD	1,8	4,5
OPP	1,5	4,8

NOTES:

1. STANDARD ROTATION IS CCW FACING END OPPOSITE SHAFT EXTENSION.
2. OPTIONAL THERMOSTAT IS PROVIDED WHEN SPECIFIED.
3. MULTIPLE CAPACITORS ARE CONNECTED IN PARALLEL UNLESS OTHERWISE SPECIFIED.
4. LEAD COLORS ARE OPTIONAL. LEADS MUST ALWAYS BE NUMBERED AS SHOWN.

REV. DESC: REVISE TO SHOW OPTIONAL COLORS			
REV. LTR: B	BY: JLP	REVISED: 04/08/99 1:18	TDR: 0178636
10VZ1000		FILE: AAA00007513	MDL: -
CD0017A01		MTL: -	

**BALDOR ELECTRIC Co.**

TYPE L, SV, REV, 4 LEADS

CD0017A01