



Customer information packet

VXT3254T

25HP, 1770RPM, 3PH, 60HZ, 284TC, 1056M, TEFC, F

Class - CLI GP A,B,C,D

Division - Division II

Specifications

Enclosure	TEFC
Frame	284TC
Frame Material	Iron
Frequency	60.00 Hz
Motor Letter Type	Three Phase
Output @ Frequency	25.000 HP @ 60 HZ
Phase	3
Synchronous Speed @ Frequency	1800 RPM @ 60 HZ
Voltage @ Frequency	460.0 V @ 60 HZ 230.0 V @ 60 HZ
XP Class and Group	CLIP A,B,C,D
XP Division	Division II
Agency Approvals	CCSA US CSA EEV NEMA PREMIUM NEMA_PREMIUM UR
Ambient Temperature	40 °C
Auxillary Box	No Auxillary Box
Auxillary Box Lead Termination	None
Base Indicator	No Mounting
Bearing Grease Type	Polyrex EM (-20F +300F)
Blower	None
Constant Torque Speed Range	3
Current @ Voltage	64.000 A @ 208.0 V 60.000 A @ 230.0 V 30.000 A @ 460.0 V
Design Code	B
Drip Cover	No Drip Cover
Duty Rating	CONT
Efficiency @ 100% Load	93.6 %
Electrically Isolated Bearing	Not Electrically Isolated

Part detail

Revision	D
Type	AC
Mech. spec.	
Base	
Status	PRD/A
Elec. spec.	10WGZ624
Layout	10LYC153
Eff. date	04-20-2022
CD Diagram	CD0005
Poles	04
Leads	9#10
Proprietary	False
Created date	11-16-2020

Feedback Device	NO FEEDBACK
Heater Indicator	No Heater
High Voltage Full Load Amps	30.0 a
Insulation Class	F
Inverter Code	Inverter Duty
IP Rating	NONE
KVA Code	F
Lifting Lugs	Standard Lifting Lugs
Locked Bearing Indicator	Locked Bearing
Motor Lead Termination	Flying Leads
Motor Standards	NEMA
Motor Type	1056M
Mounting Arrangement	F1
Number of Poles	4
Overall Length	27.76 IN
Power Factor	85
Product Family	General Purpose
Pulley Face Code	C-Face
Rodent Screen	None
Service Factor	1.15
Shaft Diameter	1.875 IN
Shaft Ground Indicator	No Shaft Grounding
Shaft Rotation	Reversible
Speed	1770 rpm
Speed Code	Single Speed
Starting Method	Direct on line
Thermal Device - Bearing	None
Thermal Device - Winding	None
Vibration Sensor Indicator	No Vibration Sensor
Winding Thermal 1	None
Winding Thermal 2	None
XP Temp Code	T3A

Nameplate

NP4163L										
CAT.NO.	VXT3254T					I.P.	54			
SPEC.	10-0000-1821					ENCL	TEFC			
FRAME	284TC		H.P.	25						
VOLTS	230/460		P.F.	85						
F.L. AMPS	60/30		RATING	40C AMB-CONT						
R.P.M.	1770		USABLE AT 208V	N/A						
HZ.	60		PH.	3		CLASS	F			
SER.F.	1.15		DES.	B		SL HZ	1			
NEMA NOM. EFF.	93.6		WK2	4.46						
DE	6311		ODE	6309						
MAG. CUR.	20.8/10.4									
INV TYPE	PWM	CHP	60	TO	90	T. CODE	T3A			
CT	3	TO	60	VT	3	TO	60			
CC	010A		SN							
USABLE AT 50 HZ 20HP 190/380V										
58/29A										

AC Induction Motor Performance Data

Record # 62432

Typical performance - not guaranteed values

Winding: 10WGZ624-R001		Type: 1056M		Enclosure: TEFC	
Nameplate Data			460 V, 60 Hz: High Voltage Connection		
Rated Output (HP)	25	Full Load Torque	74.31 LB-FT		
Volts	460	Start Configuration	direct on line		
Full Load Amps	30	Breakdown Torque	197 LB-FT		
R.P.M.	1770	Pull-up Torque	91.4 LB-FT		
Hz	60	Locked-rotor Torque	115 LB-FT		
NEMA Design Code	Phase 3	Starting Current	173 A		
Service Factor (S.F.)	B KVA Code F	No-load Current	10.4 A		
NEMA Nom. Eff.	93.6	Line-line Res. @ 25°C	0.29877 Ω		
Rating - Duty	Power Factor 85	Temp. Rise @ Rated Load	54°C		
S.F. Amps	40C AMB-CONT	Temp. Rise @ S.F. Load	67°C		
		Locked-rotor Power Factor	30.3		

Load Characteristics 460 V, 60 Hz, 25 HP

% of Rated Load	25	50	75	100	125	150	S.F.
Power Factor	51	73	81	85	86	86	86
Efficiency	91	93.8	94.1	93.7	92.9	91.8	93.2
Speed	1792.8	1785.5	1778.9	1770.7	1762.4	1751.5	1766
Line amperes	12.5	17	22.9	29.5	36.5	44.7	33.7

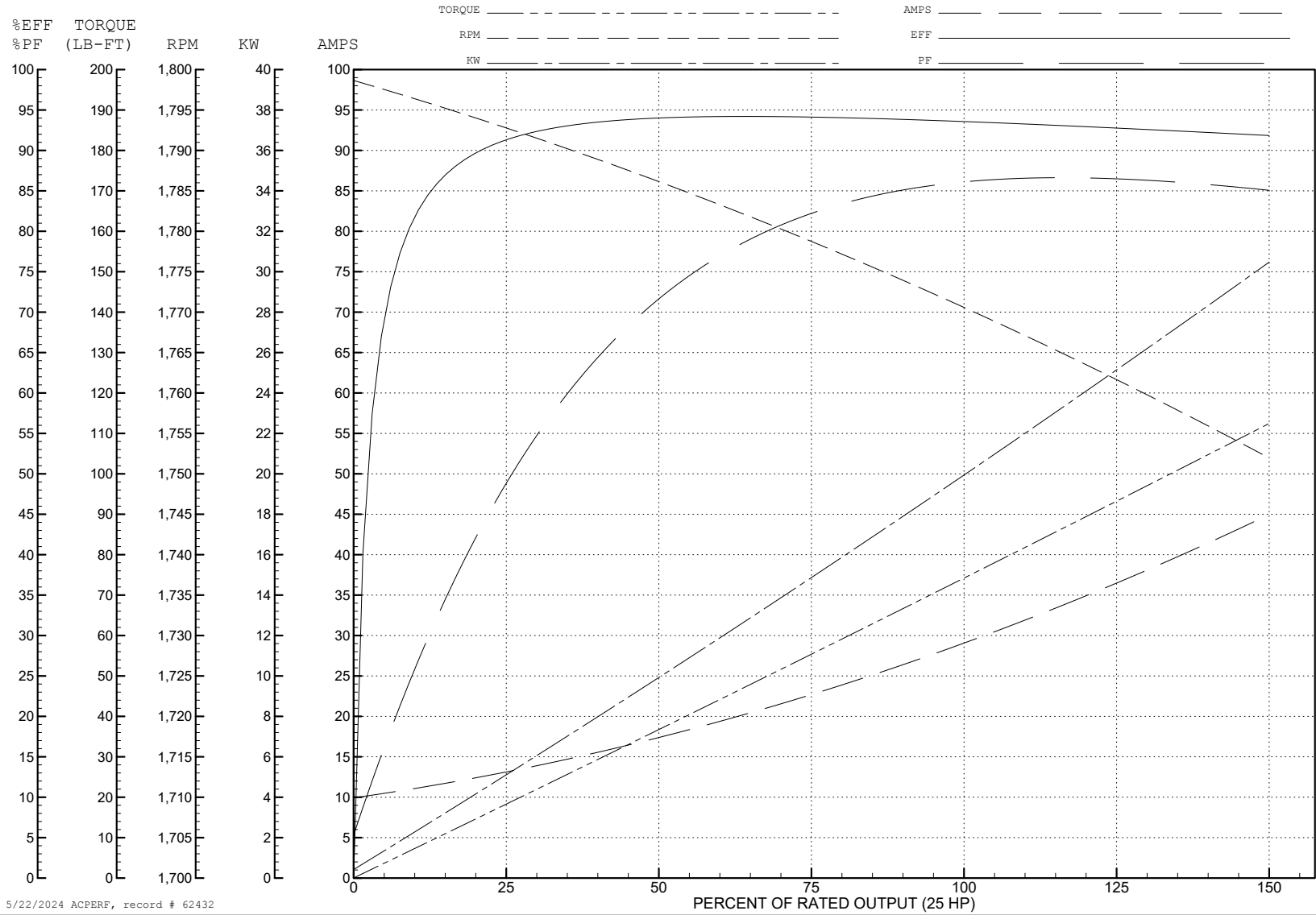
ABB Motors and Mechanical Inc.

WINDING # 10WGZ624

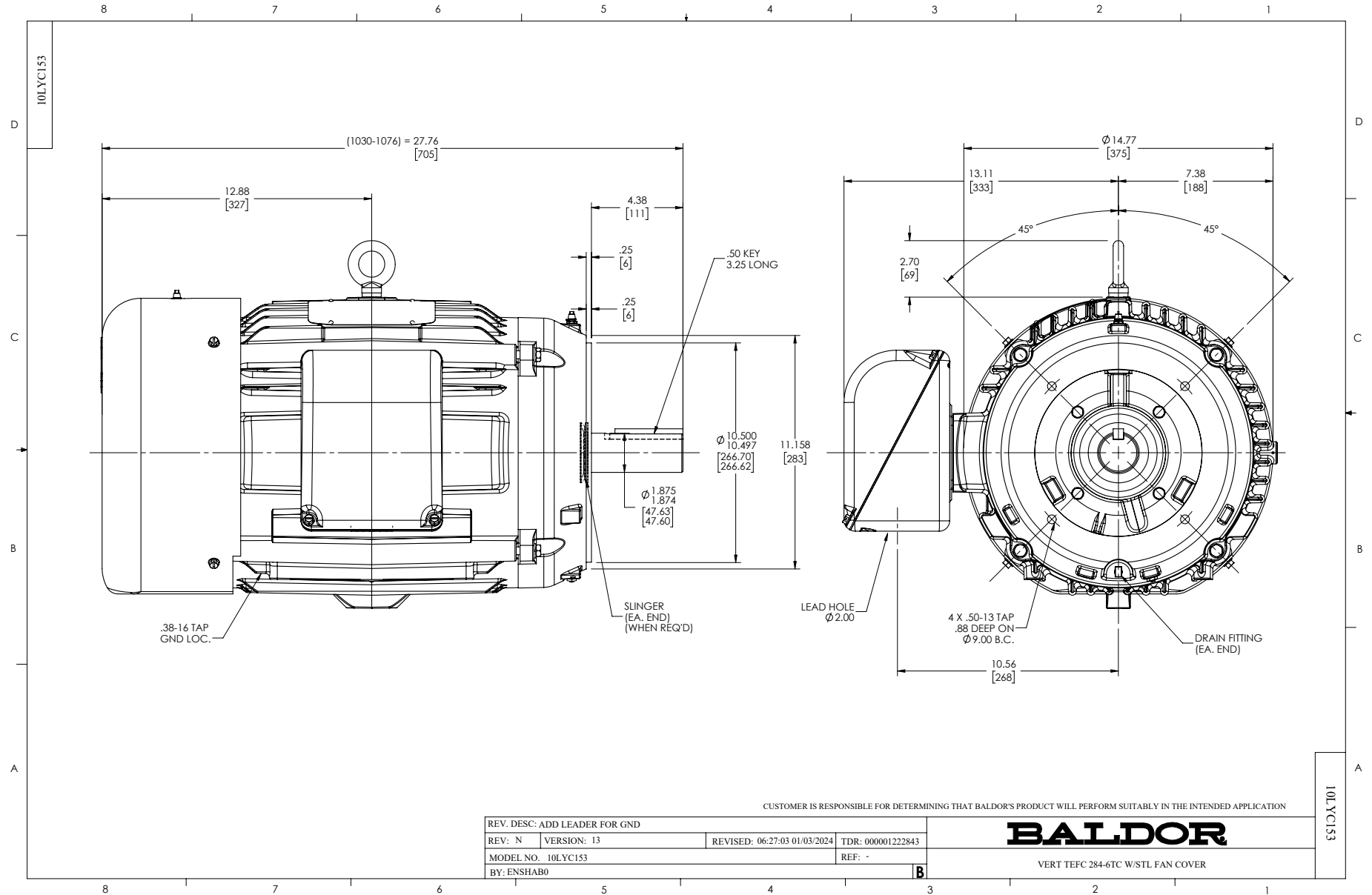
Typical performance - not guaranteed values.

25 HP 3 PH 60 HZ 1770 RPM 460 V 1056M

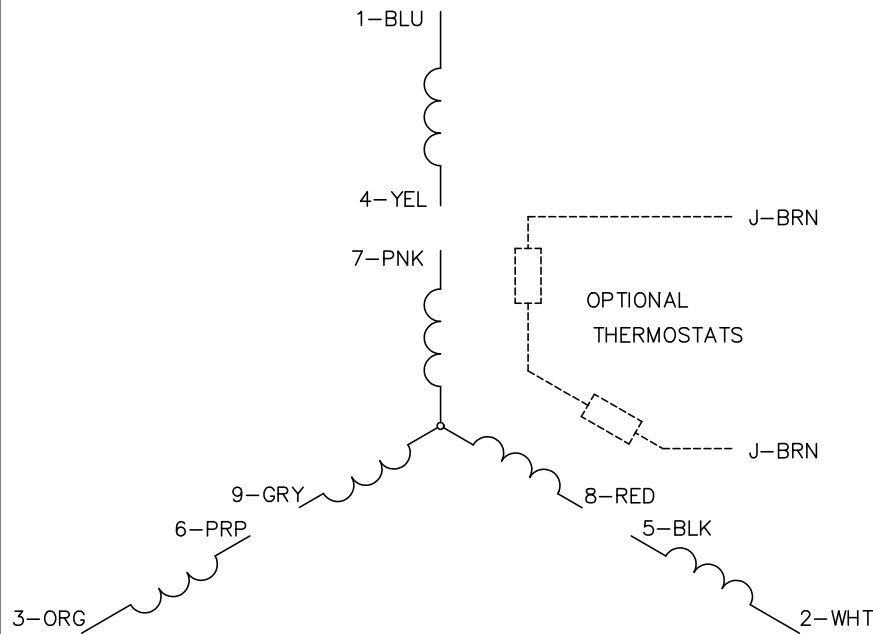
TORQUES (LB-FT): PO=197 PU=91.4 LR=115 LRA=173



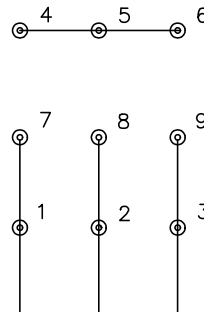
5/22/2024 ACPERF, record # 62432



CD0005

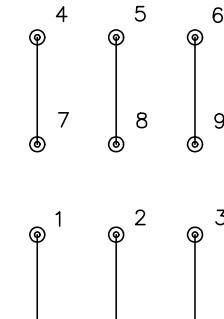


LOW VOLTAGE
(2Y)



LINE

HIGH VOLTAGE
(1Y)



LINE

NOTES:

1. INTERCHANGE ANY TWO LINE LEADS TO REVERSE ROTATION.
2. OPTIONAL THERMOSTATS ARE PROVIDED WHEN SPECIFIED.
3. ACTUAL NUMBER OF INTERNAL PARALLEL CIRCUITS MAY BE A MULTIPLE OF THOSE SHOWN ABOVE.
4. LEAD COLORS ARE OPTIONAL. LEADS MUST ALWAYS BE NUMBERED AS SHOWN.

REV. DESC: REVISE TO SHOW OPTIONAL COLORS			
REV. LTR: E	BY: JLP	REVISED: 01/19/99 10:15	TDR: 0171435
S00000		FILE: AAA00005140	MDL: -
		MTL: -	

BALDOR ELECTRIC Co.

3PH, DV, 9 LEADS

CD0005