

BALDOR® • RELIANCE™

Customer information packet

VXT3102T

10HP, 3525RPM, 3PH, 60HZ, 215TC, 0738M, TEFC, F

Class - CLI GP A,B,C,D

Division - Division II

Specifications

Enclosure	TEFC
Frame	215TC
Frame Material	Iron
Frequency	60.00 Hz
Motor Letter Type	Three Phase
Output @ Frequency	10.000 HP @ 60 HZ
Phase	3
Synchronous Speed @ Frequency	3600 RPM @ 60 HZ
Voltage @ Frequency	460.0 V @ 60 HZ 208.0 V @ 60 HZ 230.0 V @ 60 HZ
XP Class and Group	CLI GP A,B,C,D
XP Division	Division II
Agency Approvals	UR CSA
Ambient Temperature	40 °C
Auxillary Box	No Auxillary Box
Auxillary Box Lead Termination	None
Base Indicator	No Mounting
Bearing Grease Type	Polyrex EM (-20F +300F)
Blower	None
Constant Torque Speed Range	3
Current @ Voltage	11.900 A @ 460.0 V 23.800 A @ 230.0 V 25.400 A @ 208.0 V
Design Code	B
Drip Cover	No Drip Cover
Duty Rating	CONT
Efficiency @ 100% Load	91.0 %
Electrically Isolated Bearing	Not Electrically Isolated
Feedback Device	NO FEEDBACK
Heater Indicator	No Heater

Part detail

Revision	H
Type	AC
Mech. spec.	
Base	
Status	PRD/A
Elec. spec.	07WGW279
Layout	07LYL289
Eff. date	10-03-2022
CD Diagram	CD0005
Poles	02
Leads	9#16
Proprietary	False
Created date	09-04-2020

High Voltage Full Load Amps	11.9 a
Insulation Class	F
Inverter Code	Inverter Duty
IP Rating	NONE
KVA Code	K
Lifting Lugs	Standard Lifting Lugs
Locked Bearing Indicator	Locked Bearing
Max Speed	5400 rpm
Motor Lead Termination	Flying Leads
Motor Standards	NEMA
Motor Type	0738M
Mounting Arrangement	F1
Number of Poles	2
Overall Length	19.25 IN
Power Factor	93
Product Family	General Purpose
Pulley Face Code	C-Face
Rodent Screen	None
Service Factor	1.00
Shaft Diameter	1.375 IN
Shaft Ground Indicator	No Shaft Grounding
Shaft Rotation	Reversible
Speed	3525 rpm
Speed Code	Single Speed
Starting Method	Direct on line
Thermal Device - Bearing	None
Thermal Device - Winding	None
Vibration Sensor Indicator	No Vibration Sensor
Winding Thermal 1	None
Winding Thermal 2	None
XP Temp Code	T3C

Nameplate

NP4163L									
CAT.NO.	VXT3102T				I.P.	54			
SPEC.	07-0000-0869				ENCL	TEFC			
FRAME	215TC	H.P.	10						
VOLTS	208-230/460	P.F.	93						
F.L. AMPS	25.4-23.8/11.9	RATING	40C AMB-CONT						
R.P.M.	3525	USABLE AT 208V	25.4						
HZ.	60	PH.	3	CLASS	F				
SER.F.	1.15	DES.	B	SL HZ	1.35				
NEMA NOM. EFF.	91	WK2	0.35						
DE	6307	ODE	6206						
MAG. CUR.	4.6								
INV TYPE	PWM	CHP	60	TO	90	T. CODE	T3C		
CT	3	TO	60	VT	3	TO	60		
CC	010A	SN							
	USABLE AT 50HZ 7.5HP 190/380V								
	21.6/10.8A								

AC Induction Motor Performance Data

Record # 84582

Typical performance - not guaranteed values

Winding: 07WGW279-R022		Type: 0738M	Enclosure: TEFC	
Nameplate Data			460 V, 60 Hz: High Voltage Connection	
Rated Output (HP)	10	Full Load Torque	15 LB-FT	
Volts	208-230/460	Start Configuration	direct on line	
Full Load Amps	25.4-23.8/11.9	Breakdown Torque	66 LB-FT	
R.P.M.	3525	Pull-up Torque	33.5 LB-FT	
Hz	60 Phase	Locked-rotor Torque	37.5 LB-FT	
NEMA Design Code	B KVA Code	Starting Current	112 A	
Service Factor (S.F.)	1	No-load Current	4.2 A	
NEMA Nom. Eff.	91 Power Factor	Line-line Res. @ 25°C	0.784 Ω	
Rating - Duty	40C AMB-CONT	Temp. Rise @ Rated Load	43°C	
		Locked-rotor Power Factor	33.8	
		Rotor inertia	0.347 lb-ft ²	

Load Characteristics 460 V, 60 Hz, 10 HP

% of Rated Load	25	50	75	100
Power Factor	53	75	85	89
Efficiency	85.5	90.2	91.6	91.2
Speed	3579	3560	3540	3519
Line amperes	5.3	7	9.2	11.6

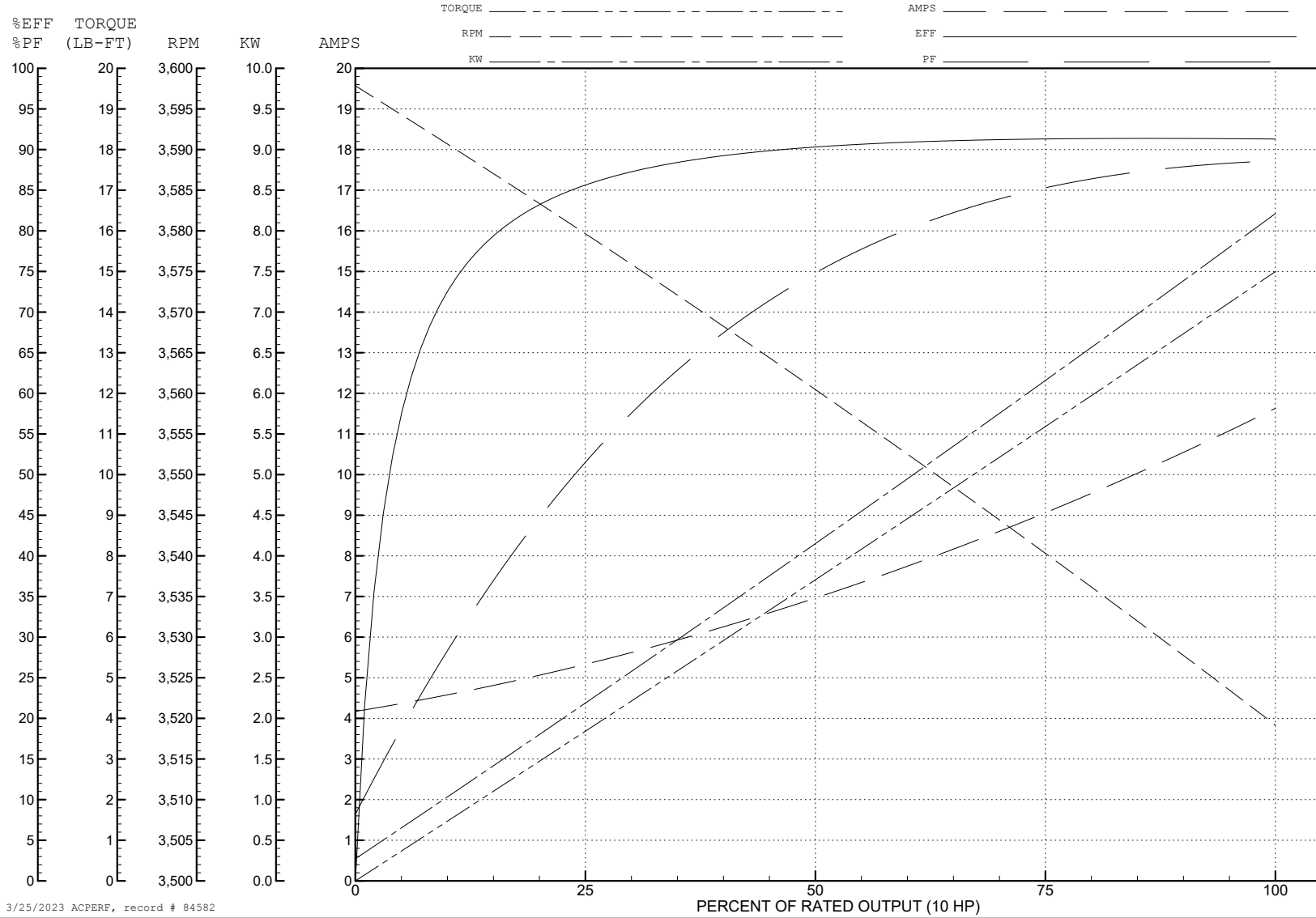
ABB Motors and Mechanical Inc.

WINDING # 07WGW279

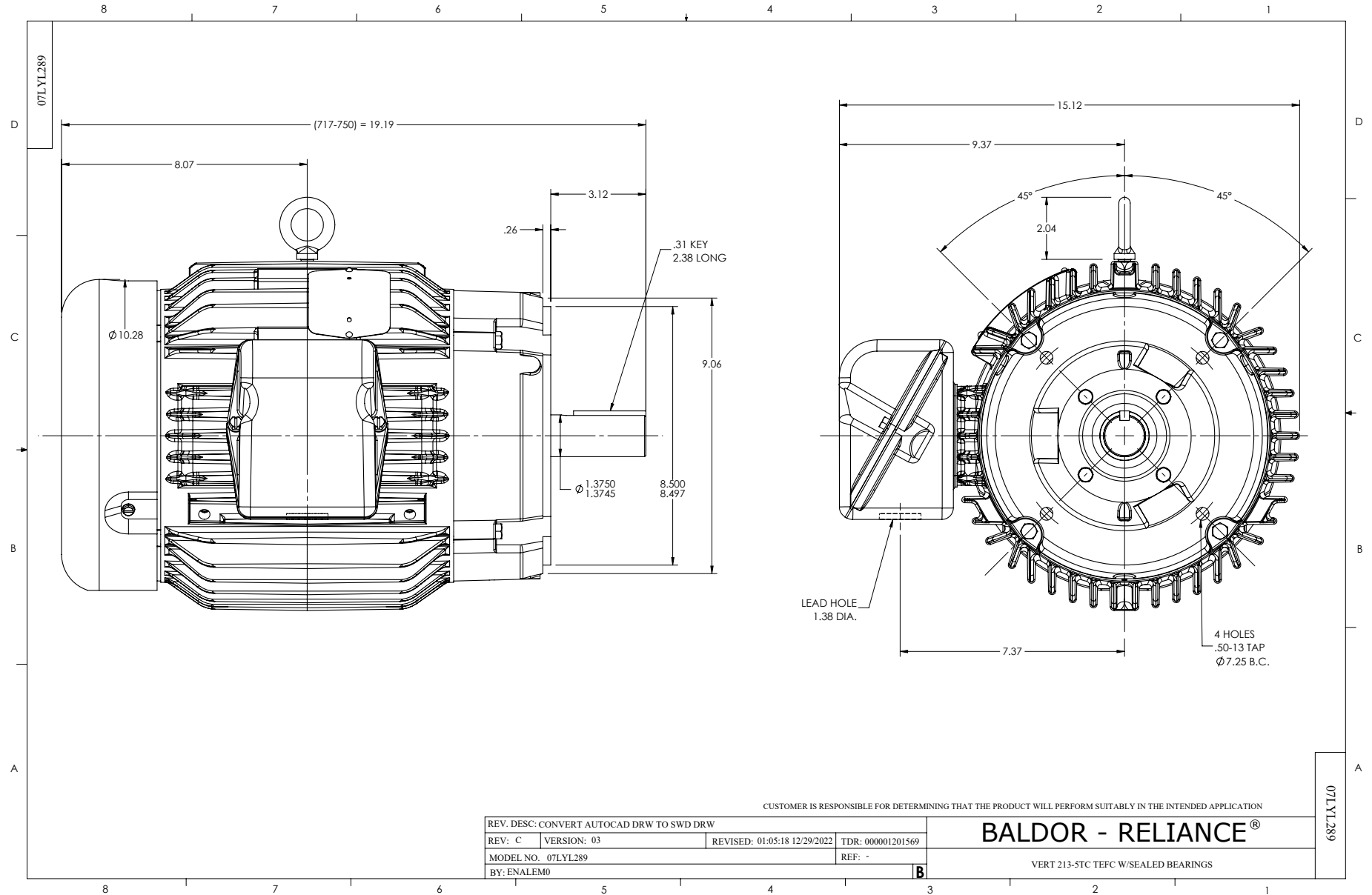
Typical performance - not guaranteed values.

10 HP 3 PH 60 HZ 3525 RPM 460 V 0738M

TORQUES (LB-FT): PO=66 PU=33.5 LR=37.5 LRA=112



3/25/2023 ACPERF, record # 84582



CD0005

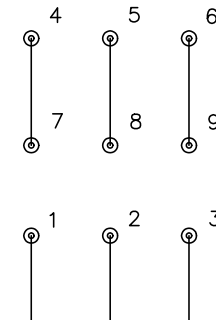


LOW VOLTAGE
(2Y)



LINE

HIGH VOLTAGE
(1Y)



LINE

NOTES:

1. INTERCHANGE ANY TWO LINE LEADS TO REVERSE ROTATION.
2. OPTIONAL THERMOSTATS ARE PROVIDED WHEN SPECIFIED.
3. ACTUAL NUMBER OF INTERNAL PARALLEL CIRCUITS MAY BE A MULTIPLE OF THOSE SHOWN ABOVE.
4. LEAD COLORS ARE OPTIONAL. LEADS MUST ALWAYS BE NUMBERED AS SHOWN.

REV. DESC: REVISE TO SHOW OPTIONAL COLORS			
REV. LTR: E	BY: JLP	REVISED: 01/19/99 10:15	TDR: 0171435
S00000		FILE: AAA00005140	MDL: -
		MTL: -	

BALDOR ELECTRIC Co.

3PH, DV, 9 LEADS

CD0005