



---

# Customer information packet

## VXT3056T

5HP, 1160RPM, 3PH, 60HZ, 215TC, 0744M, TEFC, F1

Class - CLI GP A,B,C,D

Division - Division II

## Specifications

Enclosure	TEFC
Frame	215TC
Frame Material	Iron
Frequency	60.00 Hz
Motor Letter Type	Three Phase
Output @ Frequency	5.000 HP @ 60 HZ
Phase	3
Synchronous Speed @ Frequency	1200 RPM @ 60 HZ
Voltage @ Frequency	208.0 V @ 60 HZ 230.0 V @ 60 HZ 460.0 V @ 60 HZ
XP Class and Group	CLI GP A,B,C,D
XP Division	Division II
Agency Approvals	CCSA US CSA EEV NEMA PREMIUM UR
Ambient Temperature	40 °C
Auxillary Box	No Auxillary Box
Auxillary Box Lead Termination	None
Base Indicator	No Mounting
Bearing Grease Type	Polyrex EM (-20F +300F)
Blower	None
Constant Torque Speed Range	3
Current @ Voltage	8.000 A @ 460.0 V 16.100 A @ 208.0 V 16.000 A @ 230.0 V
Design Code	B
Drip Cover	No Drip Cover
Duty Rating	CONT
Efficiency @ 100% Load	89.5 %
Electrically Isolated Bearing	Not Electrically Isolated

## Part detail

Revision	B
Type	AC
Mech. spec.	
Base	
Status	PRD/A
Elec. spec.	07WGW333
Layout	07LYL289
Eff. date	09-19-2022
CD Diagram	CD0005
Poles	06
Leads	9#14
Proprietary	False
Created date	11-09-2020

Feedback Device	NO FEEDBACK
Heater Indicator	No Heater
High Voltage Full Load Amps	8.0 a
Insulation Class	F
Inverter Code	Inverter Duty
IP Rating	NONE
KVA Code	L
Lifting Lugs	Standard Lifting Lugs
Locked Bearing Indicator	Locked Bearing
Motor Lead Termination	Flying Leads
Motor Standards	NEMA
Motor Type	0744M
Mounting Arrangement	F1
Number of Poles	6
Overall Length	19.25 IN
Power Factor	64
Product Family	General Purpose
Pulley Face Code	C-Face
Rodent Screen	None
Service Factor	1.15
Shaft Diameter	1.375 IN
Shaft Ground Indicator	No Shaft Grounding
Shaft Rotation	Reversible
Speed	1160 rpm
Speed Code	Single Speed
Starting Method	Direct on line
Thermal Device - Bearing	None
Thermal Device - Winding	None
Vibration Sensor Indicator	No Vibration Sensor
Winding Thermal 1	None
Winding Thermal 2	None
XP Temp Code	T3C

**Nameplate**

<b>NP4163L</b>										
<b>CAT.NO.</b>	VXT3056T					<b>I.P.</b>	54			
<b>SPEC.</b>	07-0000-0909					<b>ENCL</b>	TEFC			
<b>FRAME</b>	215TC		<b>H.P.</b>	5						
<b>VOLTS</b>	208-230/460		<b>P.F.</b>	64						
<b>F.L. AMPS</b>	16.1-16/8		<b>RATING</b>	40C AMB-CONT						
<b>R.P.M.</b>	1160		<b>USABLE AT 208V</b>			16.1				
<b>HZ.</b>	60		<b>PH.</b>	3		<b>CLASS</b>	F			
<b>SER.F.</b>	1.15		<b>DES.</b>	B		<b>SL HZ</b>	2			
<b>NEMA NOM. EFF.</b>	89.5		<b>WK2</b>	1.09						
<b>DE</b>	6307		<b>ODE</b>	6206						
<b>MAG. CUR.</b>	9/4.5									
<b>INV TYPE</b>	PWM	<b>CHP</b>	60	<b>TO</b>	90	<b>T. CODE</b>	T3C			
<b>CT</b>	3	<b>TO</b>	60	<b>VT</b>	3	<b>TO</b>	60			
<b>CC</b>	010A		<b>SN</b>							
USABLE AT 50 HZ 3HP 190/380V										
13/6.5A										

**AC Induction Motor Performance Data**

Record # 84578

Typical performance - not guaranteed values

Winding: 07WGW333-R028		Type: 0744M		Enclosure: TEFC	
<b>Nameplate Data</b>			<b>460 V, 60 Hz: High Voltage Connection</b>		
Rated Output (HP)	5	Full Load Torque	22.7 LB-FT		
Volts	208-230/460	Start Configuration	direct on line		
Full Load Amps	16.1-16/8	Breakdown Torque	77 LB-FT		
R.P.M.	1160	Pull-up Torque	46 LB-FT		
Hz	60 Phase	Locked-rotor Torque	51 LB-FT		
NEMA Design Code	B KVA Code	Starting Current	54 A		
Service Factor (S.F.)	1	No-load Current	4.5 A		
NEMA Nom. Eff.	89.5 Power Factor	Line-line Res. @ 25°C	1.55 Ω		
Rating - Duty	40C AMB-CONT	Temp. Rise @ Rated Load	37°C		
		Locked-rotor Power Factor	24.2		
		Rotor inertia	1.09 lb-ft <sup>2</sup>		

**Load Characteristics 460 V, 60 Hz, 5 HP**

% of Rated Load	25	50	75	100
Power Factor	30	49	61	68
Efficiency	83.7	89.2	90.2	90
Speed	1192	1183	1174	1163
Line amperes	4.8	5.5	6.5	7.7

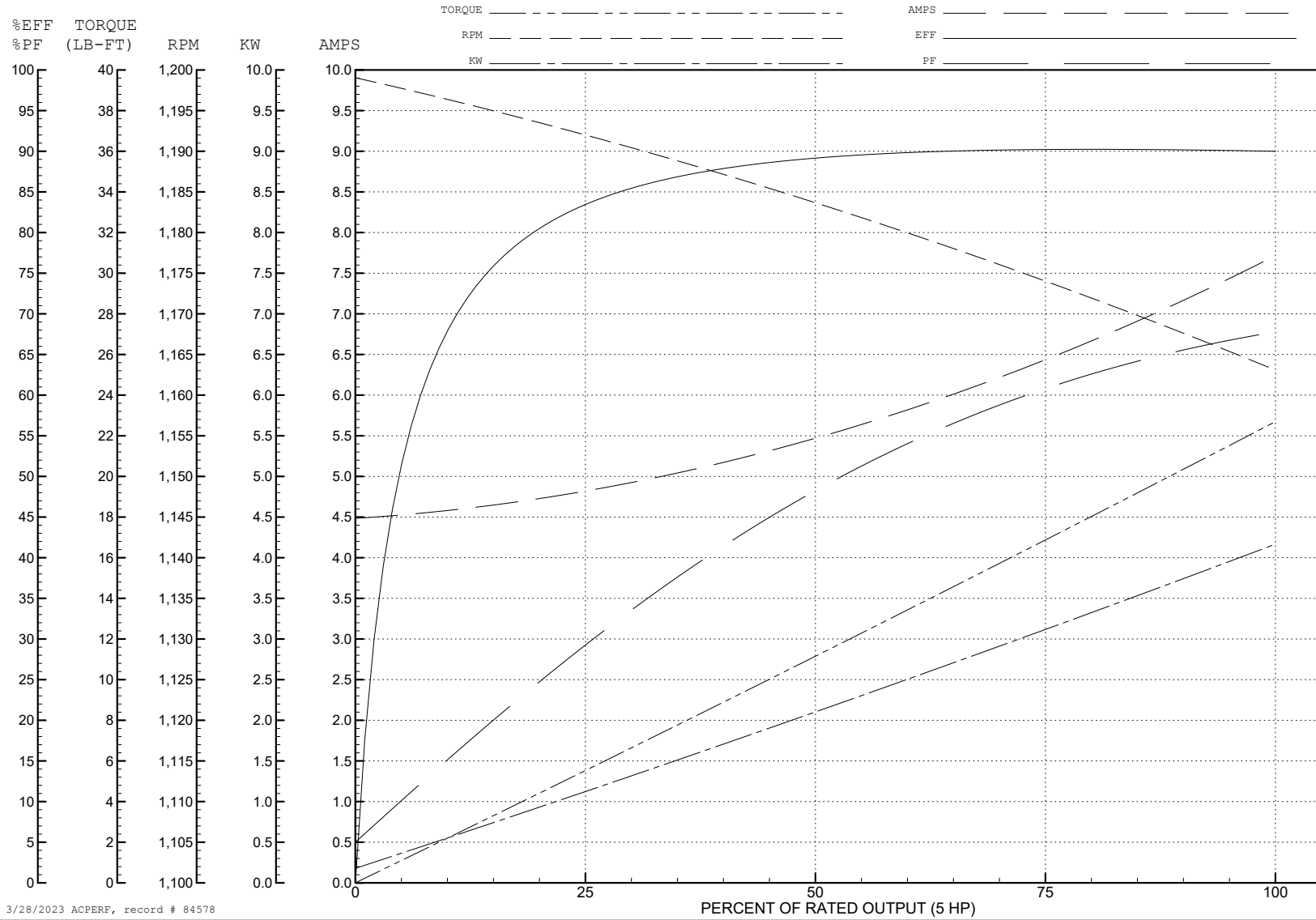
ABB Motors and Mechanical Inc.

WINDING # 07WGW333

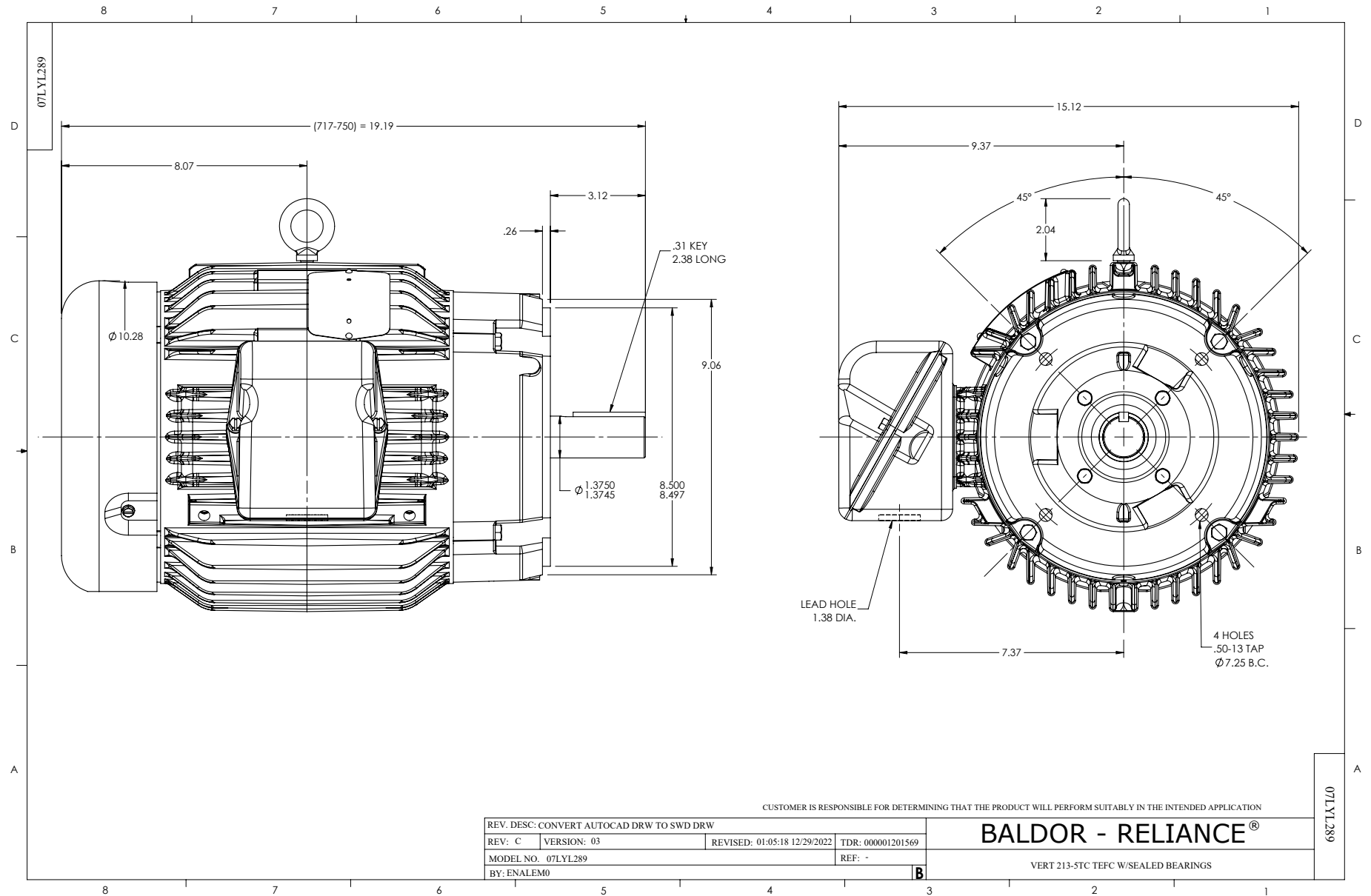
5 HP 3 PH 60 HZ 1160 RPM 460 V 0744M

Typical performance - not guaranteed values.

TORQUES (LB-FT) : PO=77 PU=46 LR=51 LRA=54



3/28/2023 ACPERF, record # 84578



CD0005



LOW VOLTAGE (2Y)



LINE

HIGH VOLTAGE (1Y)



LINE

NOTES:

1. INTERCHANGE ANY TWO LINE LEADS TO REVERSE ROTATION.
2. OPTIONAL THERMOSTATS ARE PROVIDED WHEN SPECIFIED.
3. ACTUAL NUMBER OF INTERNAL PARALLEL CIRCUITS MAY BE A MULTIPLE OF THOSE SHOWN ABOVE.
4. LEAD COLORS ARE OPTIONAL. LEADS MUST ALWAYS BE NUMBERED AS SHOWN.

CD0005

REV. DESC: REVISE TO SHOW OPTIONAL COLORS			
REV. LTR: E	BY: JLP	REVISED: 01/19/99 10:15	TDR: 0171435
S00000		FILE: AAA00005140	MDL: -
		MTL: -	

BALDOR ELECTRIC Co.

3PH, DV, 9 LEADS