



---

# Customer information packet

## VXT3016T

1HP, 1170RPM, 3PH, 60HZ, 145TC, 0526M, TEFC, F1

Class - CLI GP A,B,C,D

Division - Division II

## Specifications

Enclosure	TEFC
Frame	145TC
Frame Material	Iron
Frequency	60.00 Hz
Haz Area Class and Group	CL I GP A,B,C,D
Haz Area Division	Division II
Motor Letter Type	Three Phase
Output @ Frequency	1.000 HP @ 60 HZ
Phase	3
Synchronous Speed @ Frequency	1200 RPM @ 60 HZ
Voltage @ Frequency	230.0 V @ 60 HZ 460.0 V @ 60 HZ
Agency Approvals	CCSA US CSA EEV NEMA PREMIUM UR
Ambient Temperature	40 °C
Auxillary Box	No Auxillary Box
Auxillary Box Lead Termination	Flying Leads
Base Indicator	No Mounting
Bearing Grease Type	Polyrex EM (-20F +300F)
Blower	None
Constant Torque Speed Range	3
Current @ Voltage	3.000 A @ 230.0 V 1.500 A @ 460.0 V
Design Code	B
Drip Cover	No Drip Cover
Duty Rating	CONT
Efficiency @ 100% Load	82.5 %
Electrically Isolated Bearing	Not Electrically Isolated
Feedback Device	NO FEEDBACK
Front Shaft Indicator	None

## Part detail

Revision	A
Type	AC
Mech. spec.	05E6082
Base	
Status	PRD/A
Elec. spec.	05WGX571
Layout	05LYE6082
Eff. date	06-28-2024
CD Diagram	CD0005
Poles	06
Leads	9#18 Y
Proprietary	False
Created date	02-20-2023

Haz Area Temp Code	T4
Heater Indicator	No Heater
High Voltage Full Load Amps	1.5 a
Insulation Class	F
Inverter Code	Inverter Ready
KVA Code	J
Lifting Lugs	No Lifting Lugs
Locked Bearing Indicator	Locked Bearing
Motor Lead Quantity/Wire Size	9 @ 18 AWG
Motor Lead Termination	Flying Leads
Motor Standards	NEMA
Motor Type	0526M
Mounting Arrangement	F1
Number of Poles	6
Overall Length	12.54 IN
Power Factor	67
Product Family	General Purpose
Pulley End Bearing Type	Sealed Bearing
Pulley Face Code	C-Face
Pulley Shaft Indicator	Standard
Rodent Screen	None
Service Factor	1.15
Shaft Diameter	0.875 IN
Shaft Ground Indicator	No Shaft Grounding
Shaft Rotation	Reversible
Shaft Slinger Indicator	No Slinger
Speed	1170 rpm
Speed Code	Single Speed
Starting Method	Direct on line
Thermal Device - Bearing	None
Thermal Device - Winding	None
Vibration Sensor Indicator	No Vibration Sensor
Winding Thermal 1	None
Winding Thermal 2	None

**Nameplate**

<b>NP4163L</b>										
<b>CAT.NO.</b>	VXT3016T					<b>I.P.</b>	54			
<b>SPEC.</b>	05E6082X571G1					<b>ENCL</b>	TEFC			
<b>FRAME</b>	145TC		<b>H.P.</b>	1						
<b>VOLTS</b>	230/460		<b>P.F.</b>	67						
<b>F.L. AMPS</b>	3/1.5		<b>RATING</b>	40C AMB-CONT						
<b>R.P.M.</b>	1170									
<b>HZ.</b>	60		<b>PH.</b>	3		<b>CLASS</b>	F			
<b>SER.F.</b>	1.15		<b>DES.</b>	B		<b>SL HZ</b>	1.5			
<b>NEMA NOM. EFF.</b>	82.5		<b>WK2</b>	0.217						
<b>DE</b>	6205		<b>ODE</b>	6203						
<b>MAG. CUR.</b>	2-2.3/1.15									
<b>INV TYPE</b>	PWM	<b>CHP</b>	60		<b>TO</b>	90		<b>T. CODE</b>	T4	
<b>CT</b>	3	<b>TO</b>	60		<b>VT</b>	3		<b>TO</b>	60	
<b>CC</b>	010A		<b>SN</b>							
	SFA 4.8-4.6/2.3									

**AC Induction Motor Performance Data**

Record # 47146

Typical performance - not guaranteed values

<b>Winding: 05WGX240-R009</b>		<b>Type: 0526M</b>		<b>Enclosure: TEFC</b>	
<b>Nameplate Data</b>			<b>460 V, 60 Hz: High Voltage Connection</b>		
<b>Rated Output (HP)</b>	1		<b>Full Load Torque</b>	4.53 LB-FT	
<b>Volts</b>	208-230/460		<b>Start Configuration</b>	direct on line	
<b>Full Load Amps</b>	3.4/1.7		<b>Breakdown Torque</b>	14.6 LB-FT	
<b>R.P.M.</b>	1160		<b>Pull-up Torque</b>	11.1 LB-FT	
<b>Hz</b>	<b>60 Phase</b>	3	<b>Locked-rotor Torque</b>	12 LB-FT	
<b>NEMA Design Code</b>	<b>B KVA Code</b>	K	<b>Starting Current</b>	10.4 A	
<b>Service Factor (S.F.)</b>	1.15		<b>No-load Current</b>	1.16 A	
<b>NEMA Nom. Eff.</b>	<b>82.5 Power Factor</b>	66	<b>Line-line Res. @ 25°C</b>	17.6 Ω	
<b>Rating - Duty</b>	40C AMB-CONT		<b>Temp. Rise @ Rated Load</b>	35°C	
<b>S.F. Amps</b>			<b>Temp. Rise @ S.F. Load</b>	41°C	
			<b>Rotor inertia</b>	0.155 LB-FT <sup>2</sup>	

**Load Characteristics 460 V, 60 Hz, 1 HP**

<b>% of Rated Load</b>	<b>25</b>	<b>50</b>	<b>75</b>	<b>100</b>	<b>125</b>	<b>150</b>	<b>S.F.</b>
<b>Power Factor</b>	27	45	57	66	72	75	70
<b>Efficiency</b>	70.2	80	82.7	83.1	81.8	80	82.3
<b>Speed</b>	1192	1182	1171	1160	1146	1131	1152
<b>Line amperes</b>	1.19	1.31	1.49	1.72	1.99	2.33	1.88

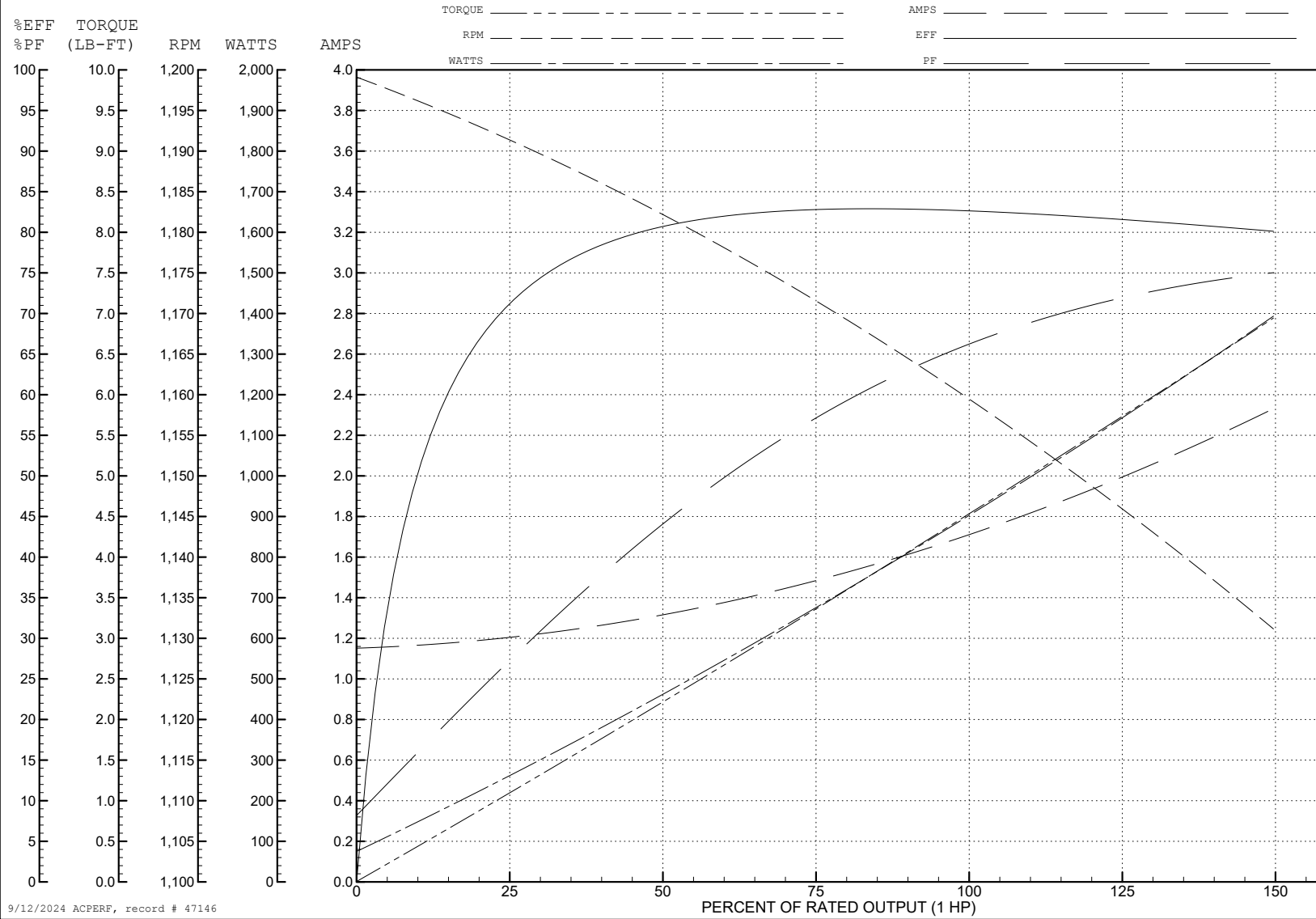
ABB Motors and Mechanical Inc.

WINDING # 05WGX240

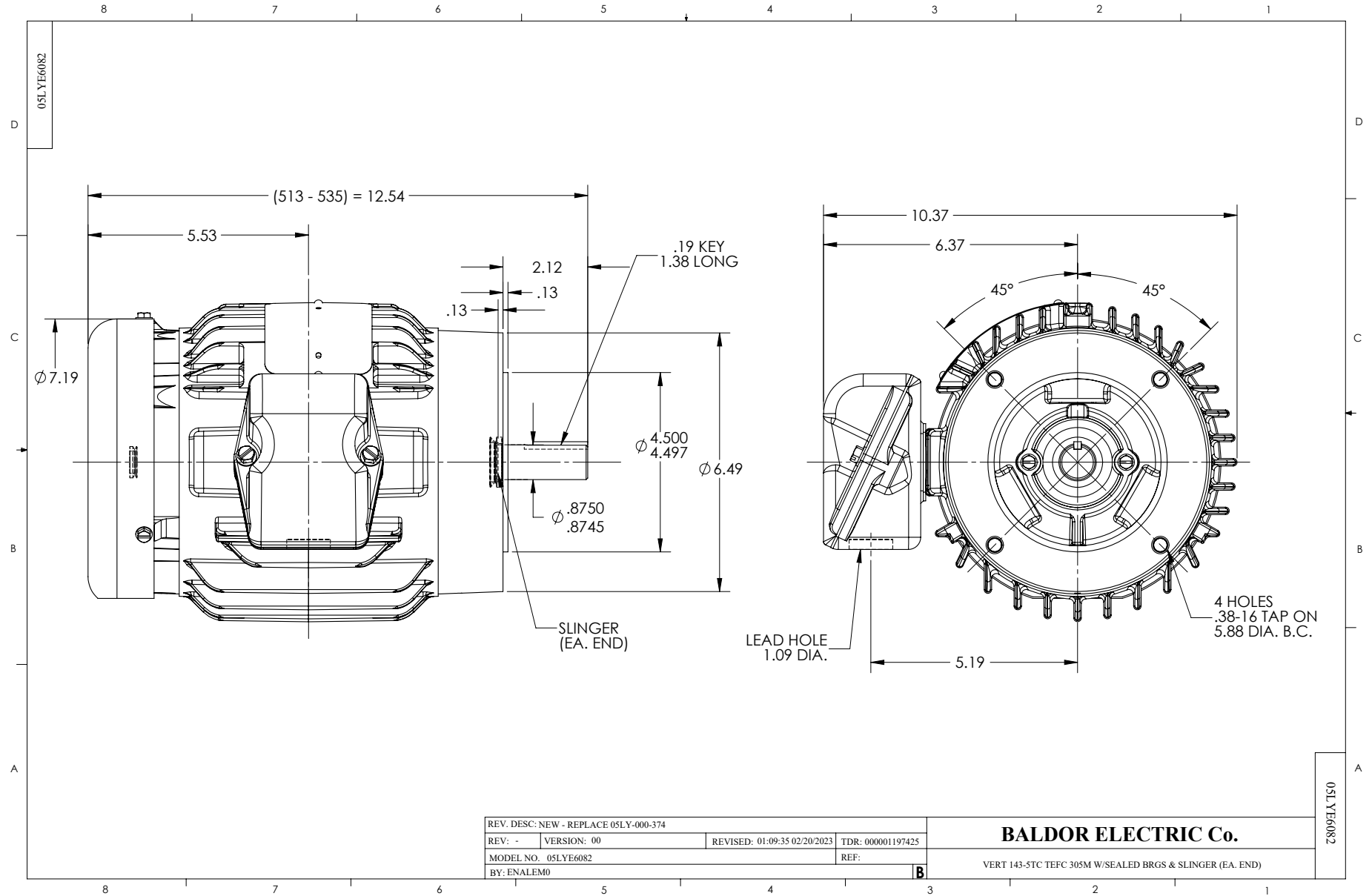
1 HP 3 PH 60 HZ 1160 RPM 460 V 0526M

Typical performance - not guaranteed values.

TORQUES (LB-FT): PO=14.6 PU=11.1 LR=12 LRA=10.4



9/12/2024 ACPERF, record # 47146



CD0005

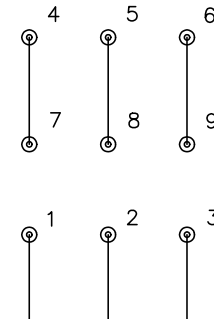


LOW VOLTAGE  
(2Y)



LINE

HIGH VOLTAGE  
(1Y)



LINE

NOTES:

1. INTERCHANGE ANY TWO LINE LEADS TO REVERSE ROTATION.
2. OPTIONAL THERMOSTATS ARE PROVIDED WHEN SPECIFIED.
3. ACTUAL NUMBER OF INTERNAL PARALLEL CIRCUITS MAY BE A MULTIPLE OF THOSE SHOWN ABOVE.
4. LEAD COLORS ARE OPTIONAL. LEADS MUST ALWAYS BE NUMBERED AS SHOWN.

CD0005

REV. DESC: REVISE TO SHOW OPTIONAL COLORS			
REV. LTR: E	BY: JLP	REVISED: 01/19/99 10:15	TDR: 0171435
S00000		FILE: AAA00005140	MDL: -
		MTL: -	

**BALDOR ELECTRIC Co.**

3PH, DV, 9 LEADS