

BALDOR • RELIANCE

Customer information packet

VXT30156T-5

1.5HP, 1170RPM, 3PH, 60HZ, 182TC, 0630M, TEFC

Class - CLI GP A,B,C,D

Division - Division II

Specifications

Enclosure	TEFC
Frame	182TC
Frame Material	Iron
Frequency	60.00 Hz
Haz Area Class and Group	CLI GP A,B,C,D
Haz Area Division	Division II
Motor Letter Type	Three Phase
Output @ Frequency	1.500 HP @ 60 HZ
Phase	3
Synchronous Speed @ Frequency	1200 RPM @ 60 HZ
Voltage @ Frequency	575.0 V @ 60 HZ
Agency Approvals	UR NEMA_PREMIUM NEMA PREMIUM CSA EEV CCSA US
Ambient Temperature	40 °C
Auxillary Box	No Auxillary Box
Auxillary Box Lead Termination	None
Base Indicator	No Mounting
Bearing Grease Type	Polyrex EM (-20F +300F)
Blower	None
Constant Torque Speed Range	3
Current @ Voltage	2.000 A @ 575.0 V
Design Code	B
Drip Cover	No Drip Cover
Duty Rating	CONT
Efficiency @ 100% Load	87.5 %
Electrically Isolated Bearing	Not Electrically Isolated
Feedback Device	NO FEEDBACK
Haz Area Temp Code	T3C
Heater Indicator	No Heater

Part detail

Revision	A
Type	AC
Mech. spec.	
Base	
Status	PRD/A
Elec. spec.	06WGX237
Layout	06LYH799
Eff. date	09-19-2022
CD Diagram	CD0006
Poles	06
Leads	3#16
Proprietary	False
Created date	05-19-2021

High Voltage Full Load Amps	2.0 a
Insulation Class	F
Inverter Code	Inverter Duty
IP Rating	NONE
KVA Code	K
Lifting Lugs	Standard Lifting Lugs
Locked Bearing Indicator	Locked Bearing
Motor Lead Termination	Flying Leads
Motor Standards	NEMA
Motor Type	0630M
Mounting Arrangement	F1
Number of Poles	6
Overall Length	15.98 IN
Power Factor	65
Product Family	General Purpose
Pulley Face Code	C-Face
Rodent Screen	None
Service Factor	1.15
Shaft Diameter	1.125 IN
Shaft Ground Indicator	No Shaft Grounding
Shaft Rotation	Reversible
Speed	1170 rpm
Speed Code	Single Speed
Starting Method	Direct on line
Thermal Device - Bearing	None
Thermal Device - Winding	None
Vibration Sensor Indicator	No Vibration Sensor
Winding Thermal 1	None
Winding Thermal 2	None

Nameplate

NP4224L									
CAT.NO.	VXT30156T-5				I.P.	54			
SPEC.	06-0000-0940				ENCL	TEFC			
FRAME	182TC	H.P.	1.5		T. CODE	T3C			
VOLTS	575		P.F.	65					
F.L. AMPS	2		RATING	40C AMB-CONT					
R.P.M.	1170		USABLE AT 208V	N/A					
HZ.	60	PH.	3	CLASS	F				
SER.F.	1.15	DES.	B	SL HZ	1.5				
NEMA NOM. EFF.	87.5		WK2	0.282					
DE	6206		ODE	6205					
MAG. CUR.	1.3								
INV TYPE	PWM	CHP	60	TO	90	INV TEMP CODE	T3C		
CT	3	TO	60	VT	3	TO	60		
CC	010A	SN							
	1.15 SF ON SINE WAVE								

AC Induction Motor Performance Data

Record # 47370

Typical performance - not guaranteed values

Winding: 06WGX237-R004		Type: 0630M		Enclosure: TEFC			
Nameplate Data			575 V, 60 Hz: Single Voltage Motor				
Rated Output (HP)	1.5	Full Load Torque	6.77 LB-FT				
Volts	575	Start Configuration	direct on line				
Full Load Amps	2	Breakdown Torque	23.8 LB-FT				
R.P.M.	1170	Pull-up Torque	12.4 LB-FT				
Hz	60 Phase	3	Locked-rotor Torque	15.7 LB-FT			
NEMA Design Code	B	KVA Code	K	Starting Current	12.9 A		
Service Factor (S.F.)	1.15	No-load Current	1.29 A				
NEMA Nom. Eff.	87.5	Power Factor	65	Line-line Res. @ 25°C	11.1 Ω		
Rating - Duty	40C AMB-CONT		Temp. Rise @ Rated Load	26°C			
S.F. Amps			Temp. Rise @ S.F. Load	31°C			
			Locked-rotor Power Factor	30.5			
			Rotor inertia	0.282 LB-FT ²			

Load Characteristics 575 V, 60 Hz, 1.5 HP

% of Rated Load	25	50	75	100	125	150	S.F.
Power Factor	27	45	56	65	70	73	68
Efficiency	76.2	84.8	86.9	87.5	87.1	85.8	87.3
Speed	1194	1187	1179	1172	1163	1153	1167
Line amperes	1.35	1.51	1.74	2	2.33	2.7	2.2

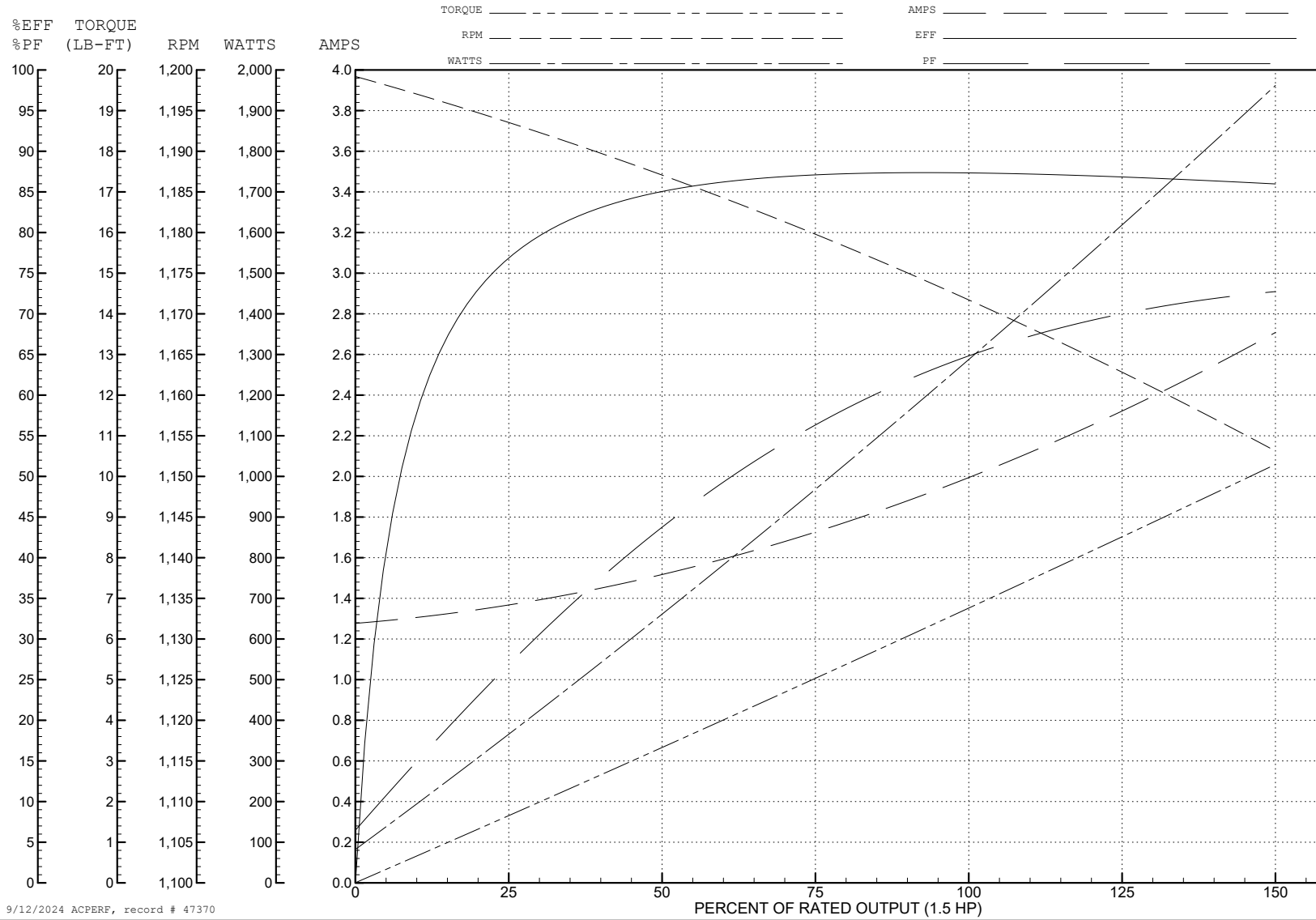
ABB Motors and Mechanical Inc.

WINDING # 06WGX237

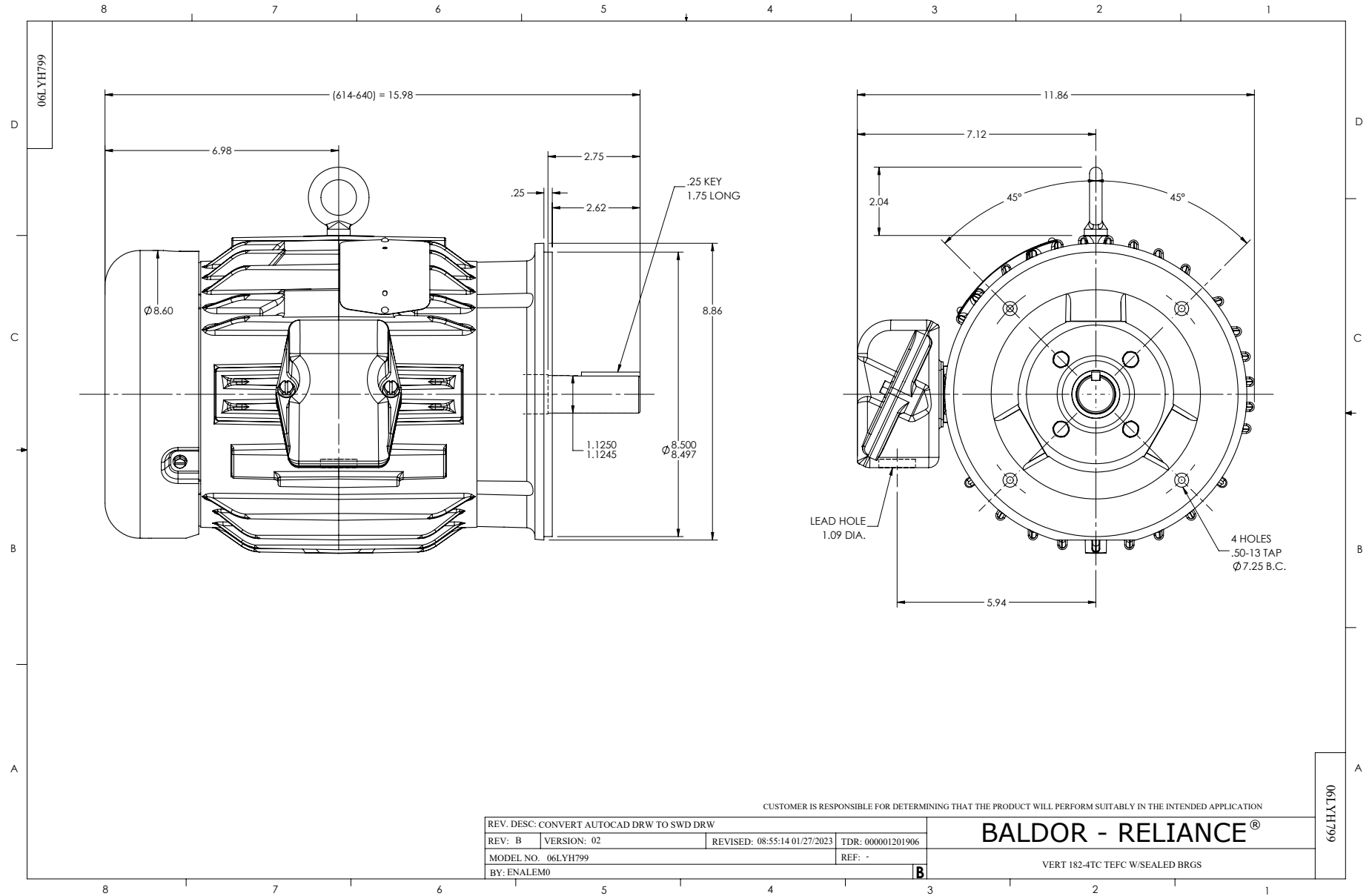
1.5 HP 3 PH 60 HZ 1170 RPM 575 V 0630M

Typical performance - not guaranteed values.

TORQUES (LB-FT): PO=23.8 PU=12.4 LR=15.7 LRA=12.9



9/12/2024 ACPERF, record # 47370



CD0006



NOTES:

1. THREE LEAD MOTOR MAY BE EITHER WYE CONNECTED OR DELTA CONNECTED.
2. INTERCHANGE ANY TWO LINE LEADS TO REVERSE ROTATION.
3. OPTIONAL THERMOSTATS ARE PROVIDED WHEN SPECIFIED.
4. ACTUAL NUMBER OF INTERNAL PARALLEL CIRCUITS MAY VARY.
5. LEAD COLORS ARE OPTIONAL. LEADS MUST BE NUMBERED AS SHOWN.

CD0006

REV. DESC: ADD CLASS CONN00000007		
REV. LTR: E	VERSION: 01	TDR: 000001099922
FILE: \AAA\00005\141	REVISED: 10:24:49 02/19/2019	BY: ENBRIRO
MTL: -	© □	

BALDOR - RELIANCE®

3PH, SV, 3 LEADS, WYE OR DELTA CONNECTED

SH 1 of 1