

BALDOR • RELIANCE

Customer information packet

VXM18342T

3//2HP, 1760//1460RPM, 3PH, 60//50HZ, 182TC

Class - CLI GP D; CLII GP F,G

Division - Division I

Specifications

Enclosure	XPFC
Frame	182TC
Frame Material	Steel
Frequency	50.00 Hz 60.00 Hz
Haz Area Class and Group	CLI GP D; CLII GP F,G
Haz Area Division	Division I
Motor Letter Type	Three Phase
Output @ Frequency	2.000 HP @ 50 HZ 3.000 HP @ 60 HZ
Phase	3
Synchronous Speed @ Frequency	1800 RPM @ 60 HZ
Voltage @ Frequency	380.0 V @ 50 HZ 230.0 V @ 60 HZ 190.0 V @ 50 HZ 460.0 V @ 60 HZ
Agency Approvals	CSA EEV UL
Ambient Temperature	40 °C
Auxillary Box	No Auxillary Box
Auxillary Box Lead Termination	None
Base Indicator	No Mounting
Bearing Grease Type	Polyrex EM (-20F +300F)
Blower	None
Constant Torque Speed Range	6
Current @ Voltage	9.000 A @ 208.0 V 8.400 A @ 230.0 V 7.200 A @ 190.0 V 4.200 A @ 460.0 V 3.600 A @ 380.0 V
Design Code	B
Drip Cover	No Drip Cover

Part detail

Revision	A
Type	AC
Mech. spec.	
Base	
Status	PRD/A
Elec. spec.	36WGS266
Layout	36LYQ330
Eff. date	06-01-2023
CD Diagram	CD0005
Poles	04
Leads	9#16
Proprietary	False
Created date	03-02-2021

Duty Rating	CONT
Efficiency @ 100% Load	89.5 %
Electrically Isolated Bearing	Not Electrically Isolated
Feedback Device	NO FEEDBACK
Haz Area Temp Code	T3C
Heater Indicator	No Heater
High Voltage Full Load Amps	3.6 a
Insulation Class	F
Inverter Code	Inverter Duty
IP Rating	NONE
KVA Code	K
Lifting Lugs	No Lifting Lugs
Locked Bearing Indicator	Locked Bearing
Max Speed	2700 rpm
Motor Lead Termination	Flying Leads
Motor Standards	NEMA
Motor Type	3632M
Mounting Arrangement	F1
Number of Poles	4
Overall Length	18.86 IN
Power Factor	75
Product Family	General Purpose
Pulley Face Code	C-Face
Rodent Screen	None
Service Factor	1.15
Shaft Diameter	1.125 IN
Shaft Ground Indicator	No Shaft Grounding
Shaft Rotation	Reversible
Speed	1760 rpm
Speed Code	Single Speed
Starting Method	Direct on line
Thermal Device - Bearing	None
Thermal Device - Winding	Normally Closed Thermostat
Vibration Sensor Indicator	No Vibration Sensor

Winding Thermal 1

None

Winding Thermal 2

None

Nameplate

NP0887XPSLEV

NO.		CC	010A		
S/N		TEMP CODE	T3C		
SPEC.	36-0000-0476	INV.TYPE	PWM		
CAT.NO.	VXM18342T	C HP FR	60	C HP TO	90
HP	3//2	CT HZ FROM	6	CT HZ TO	60
VOLTS	230/460//190/380	VT HZ FROM	6	VT HZ TO	60
AMPS	8.4/4.2//7.2/3.6	MAG CUR	4.6/2.3		
RPM	1760//1460	MX RPM	2700		
HZ	60//50	PH	3	CL	F
		NOM.EFF.	89.5		
SER.F.	1.15	DES	B	SL HZ	1.4
		WK2	0.3		
FRAME	182TC	RATING	40C AMB-CONT		
	NEMA MG-1 PART 5, IP54				
	1.15 SF ON SINE WAVE				

AC Induction Motor Performance Data

Record # 76180

Typical performance - not guaranteed values

Winding: 36WGS266-R015		Type: 3632M	Enclosure: XPFC	
Nameplate Data			460 V, 60 Hz: High Voltage Connection	
Rated Output (HP)	3	Full Load Torque	8.8 LB-FT	
Volts	230/460	Start Configuration	direct on line	
Full Load Amps	8.4/4.2	Breakdown Torque	37.6 LB-FT	
R.P.M.	1760	Pull-up Torque	15.2 LB-FT	
Hz	60 Phase	Locked-rotor Torque	21.7 LB-FT	
NEMA Design Code	B KVA Code	Starting Current	32.7 A	
Service Factor (S.F.)	1	No-load Current	2.3 A	
NEMA Nom. Eff.	89.5 Power Factor	Line-line Res. @ 25°C	3.81 Ω	
Rating - Duty	40C AMB-CONT	Temp. Rise @ Rated Load	44°C	
		Locked-rotor Power Factor	42.2	
		Rotor inertia	0.298 LB-FT ²	

Load Characteristics 460 V, 60 Hz, 3 HP

% of Rated Load	25	50	75	100	125	150
Power Factor	35	55	68	75	80	82
Efficiency	81	87.7	89.6	89.8	89.6	88.1
Speed	1791	1783	1773	1764	1753	1741
Line amperes	2.47	2.85	3.43	4.09	4.89	5.78

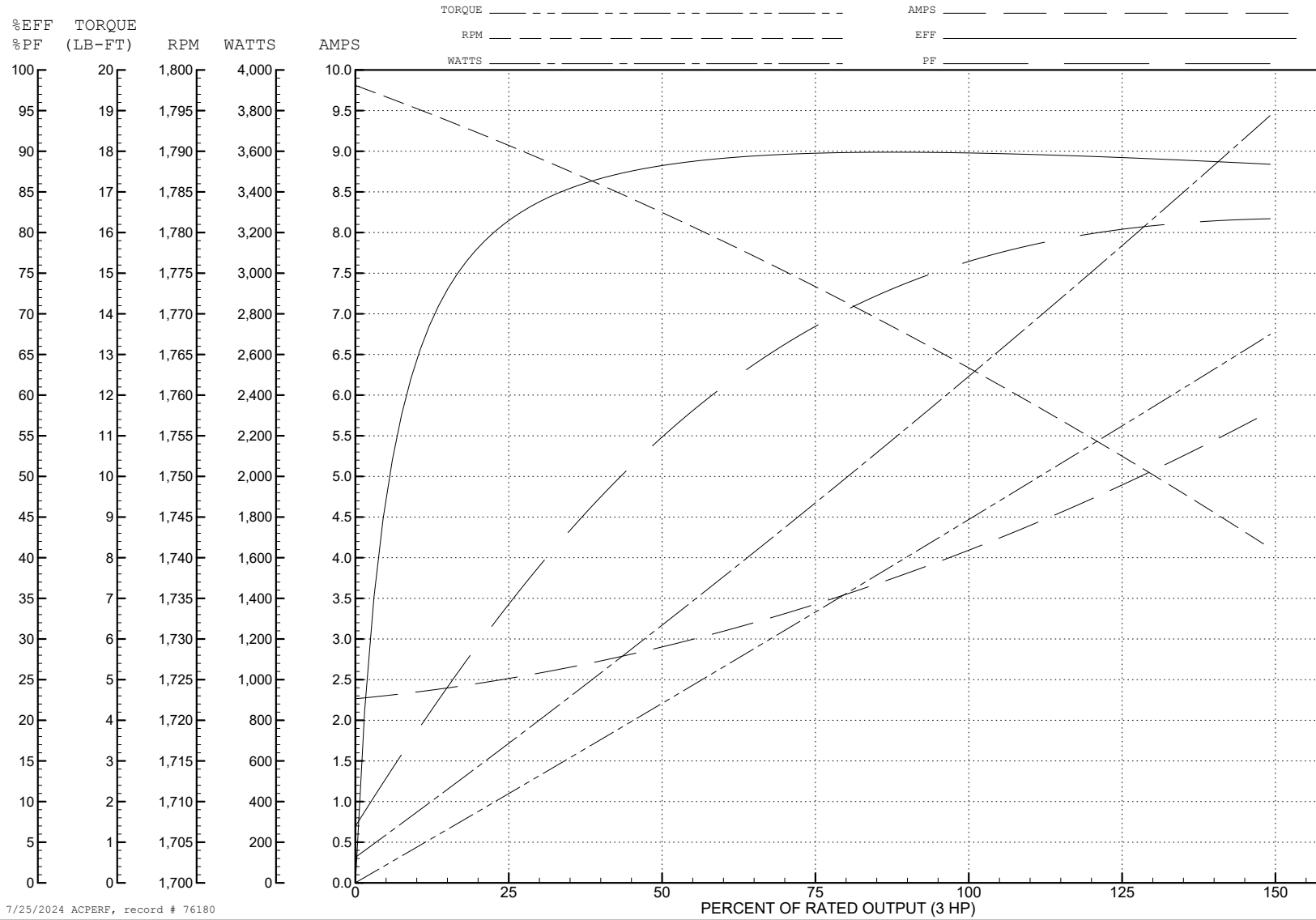
ABB Motors and Mechanical Inc.

WINDING # 36WGS266

3 HP 3 PH 60 HZ 1760 RPM 460 V 3632M

Typical performance - not guaranteed values.

TORQUES (LB-FT): PO=37.6 PU=15.2 LR=21.7 LRA=32.7



7/25/2024 ACPERF, record # 76180

AC Induction Motor Performance Data

Record # 86692

Typical performance - not guaranteed values

Winding: 36WGS266-R004		Type: 3632M	Enclosure: TEFC			
Nameplate Data			460 V, 60 Hz: High Voltage Connection			
Rated Output (HP)	3//2		Full Load Torque	8.8 LB-FT		
Volts	230/460//190/380		Start Configuration	direct on line		
Full Load Amps	8.4/4.2//7.2/3.6		Breakdown Torque	37.6 LB-FT		
R.P.M.	1760//1460		Pull-up Torque	15.2 LB-FT		
Hz	60//50	Phase	3	Locked-rotor Torque	21.7 LB-FT	
NEMA Design Code	B		KVA Code	K	Starting Current	32.7 A
Service Factor (S.F.)	1			No-load Current	2.3 A	
NEMA Nom. Eff.	89.5	Power Factor	75	Line-line Res. @ 25°C	3.81 Ω	
Rating - Duty	40C AMB-CONT			Temp. Rise @ Rated Load	44°C	
				Locked-rotor Power Factor	42.2	
				Rotor inertia	0.298 lb-ft ²	

Load Characteristics 460 V, 60 Hz, 3 HP

% of Rated Load	25	50	75	100	125	150
Power Factor	35	55	68	75	80	82
Efficiency	81	87.7	89.6	89.8	89.6	88.1
Speed	1791	1783	1773	1764	1753	1741
Line amperes	2.47	2.85	3.43	4.09	4.89	5.78

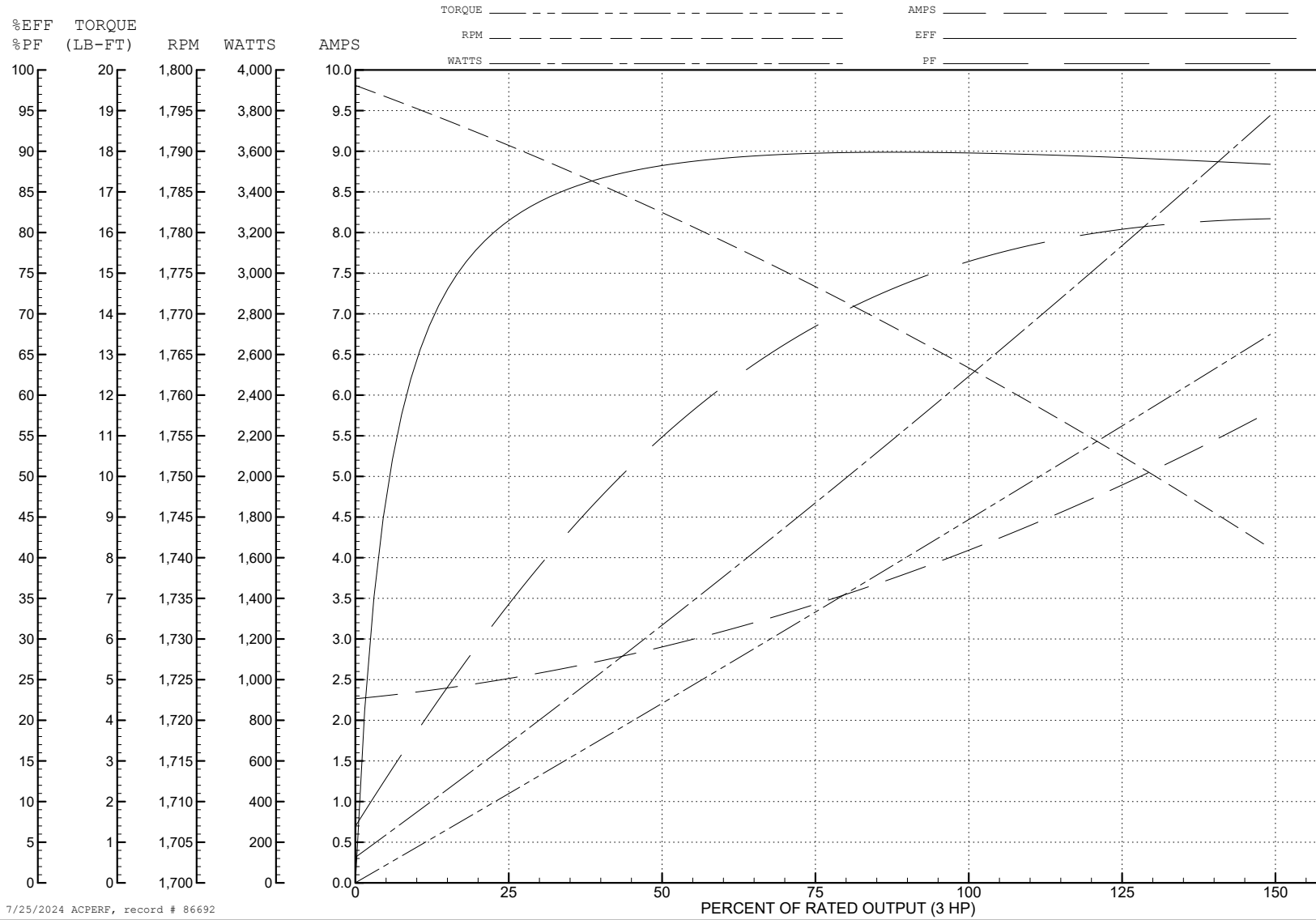
ABB Motors and Mechanical Inc.

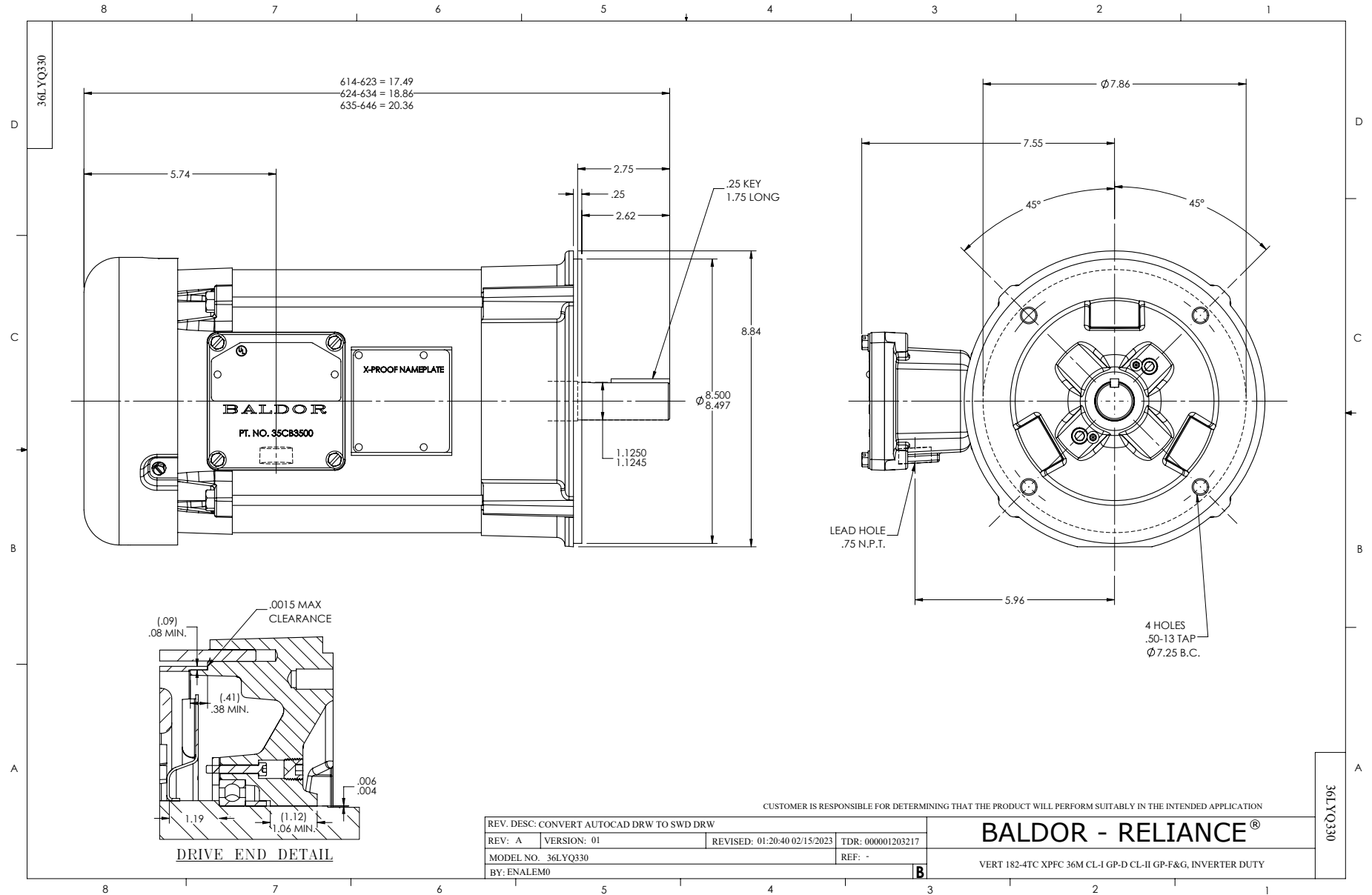
WINDING # 36WGS266

3 HP 3 PH 60 HZ 1764 RPM 460 V 3632M

Typical performance - not guaranteed values.

TORQUES (LB-FT): PO=37.6 PU=15.2 LR=21.7 LRA=32.7

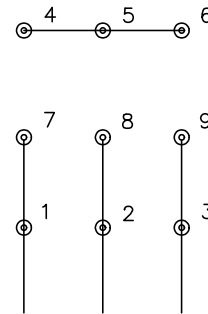




CD0005

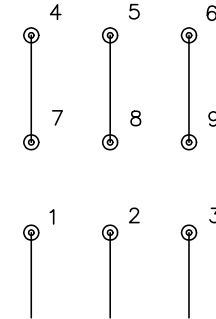


LOW VOLTAGE
(2Y)



LINE

HIGH VOLTAGE
(1Y)



LINE

NOTES:

1. INTERCHANGE ANY TWO LINE LEADS TO REVERSE ROTATION.
2. OPTIONAL THERMOSTATS ARE PROVIDED WHEN SPECIFIED.
3. ACTUAL NUMBER OF INTERNAL PARALLEL CIRCUITS MAY BE A MULTIPLE OF THOSE SHOWN ABOVE.
4. LEAD COLORS ARE OPTIONAL. LEADS MUST ALWAYS BE NUMBERED AS SHOWN.

CD0005

REV. DESC: REVISE TO SHOW OPTIONAL COLORS			
REV. LTR: E	BY: JLP	REVISED: 01/19/99 10:15	TDR: 0171435
S00000		FILE: AAA00005140	MDL: -
		MTL: -	

BALDOR ELECTRIC Co.

3PH, DV, 9 LEADS