



Customer information packet

VXM18342T-5

3HP, 1760RPM, 3PH, 60HZ, 182TC, 3632M, XPFC, F1

Class - CLI GP D; CLII GP F,G

Division - Division I

Specifications

Enclosure	XPFC
Frame	182TC
Frame Material	Steel
Frequency	60.00 Hz
Haz Area Class and Group	CLI GP D; CLII GP F,G
Haz Area Division	Division I
Motor Letter Type	Three Phase
Output @ Frequency	3.000 HP @ 60 HZ
Phase	3
Synchronous Speed @ Frequency	1800 RPM @ 60 HZ
Voltage @ Frequency	575.0 V @ 60 HZ
Agency Approvals	UL CSA EEV
Ambient Temperature	40 °C
Auxillary Box	No Auxillary Box
Auxillary Box Lead Termination	None
Base Indicator	No Mounting
Bearing Grease Type	Polyrex EM (-20F +300F)
Blower	None
Constant Torque Speed Range	6
Current @ Voltage	3.300 A @ 575.0 V
Design Code	B
Drip Cover	No Drip Cover
Duty Rating	CONT
Efficiency @ 100% Load	89.5 %
Electrically Isolated Bearing	Not Electrically Isolated
Feedback Device	NO FEEDBACK
Haz Area Temp Code	T3C
Heater Indicator	No Heater
High Voltage Full Load Amps	3.3 a
Insulation Class	F
Inverter Code	Inverter Duty

Part detail

Revision	-
Type	AC
Mech. spec.	
Base	
Status	PRD/A
Elec. spec.	36WGS582
Layout	36LYQ330
Eff. date	03-11-2021
CD Diagram	CD0006
Poles	04
Leads	3#16
Proprietary	False
Created date	03-02-2021

IP Rating	NONE
KVA Code	L
Lifting Lugs	No Lifting Lugs
Locked Bearing Indicator	Locked Bearing
Max Speed	2700 rpm
Motor Lead Termination	Flying Leads
Motor Standards	NEMA
Motor Type	3632M
Mounting Arrangement	F1
Number of Poles	4
Overall Length	18.86 IN
Power Factor	73
Product Family	General Purpose
Pulley Face Code	C-Face
Rodent Screen	None
Service Factor	1.00
Shaft Diameter	1.125 IN
Shaft Ground Indicator	No Shaft Grounding
Shaft Rotation	Reversible
Speed	1760 rpm
Speed Code	Single Speed
Starting Method	Direct on line
Thermal Device - Bearing	None
Thermal Device - Winding	Normally Closed Thermostat
Vibration Sensor Indicator	No Vibration Sensor
Winding Thermal 1	None
Winding Thermal 2	None

Nameplate

NP0887XPSLEV

NO.		CC	010A						
S/N		TEMP CODE	T3C						
SPEC.	36-0000-0473	INV.TYPE	PWM						
CAT.NO.	VXM18342T-5	C HP FR	60	C HP TO	90				
HP	3	CT HZ FROM	6	CT HZ TO	60				
VOLTS	575	VT HZ FROM	6	VT HZ TO	60				
AMPS	3.3	MAG CUR	1.9						
RPM	1760	MX RPM	2700						
HZ	60	PH	3	CL	F	NOM.EFF.	89.5		
SER.F.	1.00	DES	B	SL HZ	1.6	WK2	0.3		
FRAME	182TC	RATING	40C AMB-CONT						
	NEMA MG-1 PART 5, IP54								
	1.15 SF ON SINE WAVE								

AC Induction Motor Performance Data

Record # 68835

Typical performance - not guaranteed values

Winding: 36WGS582-R020		Type: 3632M		Enclosure: TEFC	
Nameplate Data			575 V, 60 Hz: Single Voltage Motor		
Rated Output (KW)	2.2	Full Load Torque	8.8 LB-FT		
Volts	575	Start Configuration	direct on line		
Full Load Amps	3.3	Breakdown Torque	36.5 LB-FT		
R.P.M.	1760	Pull-up Torque	19.2 LB-FT		
Hz	60	Locked-rotor Torque	22.4 LB-FT		
NEMA Design Code	B	Starting Current	26.8 A		
Service Factor (S.F.)	1	No-load Current	1.95 A		
NEMA Nom. Eff.	89.5	Line-line Res. @ 25°C	5.97 Ω		
Rating - Duty	40C AMB-CONT	Temp. Rise @ Rated Load			
		Locked-rotor Power Factor	42.5		
		Rotor inertia	0.298 LB-FT ²		

Load Characteristics 575 V, 60 Hz, 2.2 KW

% of Rated Load	25	50	75	100	125	150
Power Factor	33	53	65	73	78	81
Efficiency	81.2	87.9	90.1	90.4	90.3	89.8
Speed	1795	1788	1779	1771	1762	1752
Line amperes	2.09	2.43	2.85	3.36	3.94	4.52

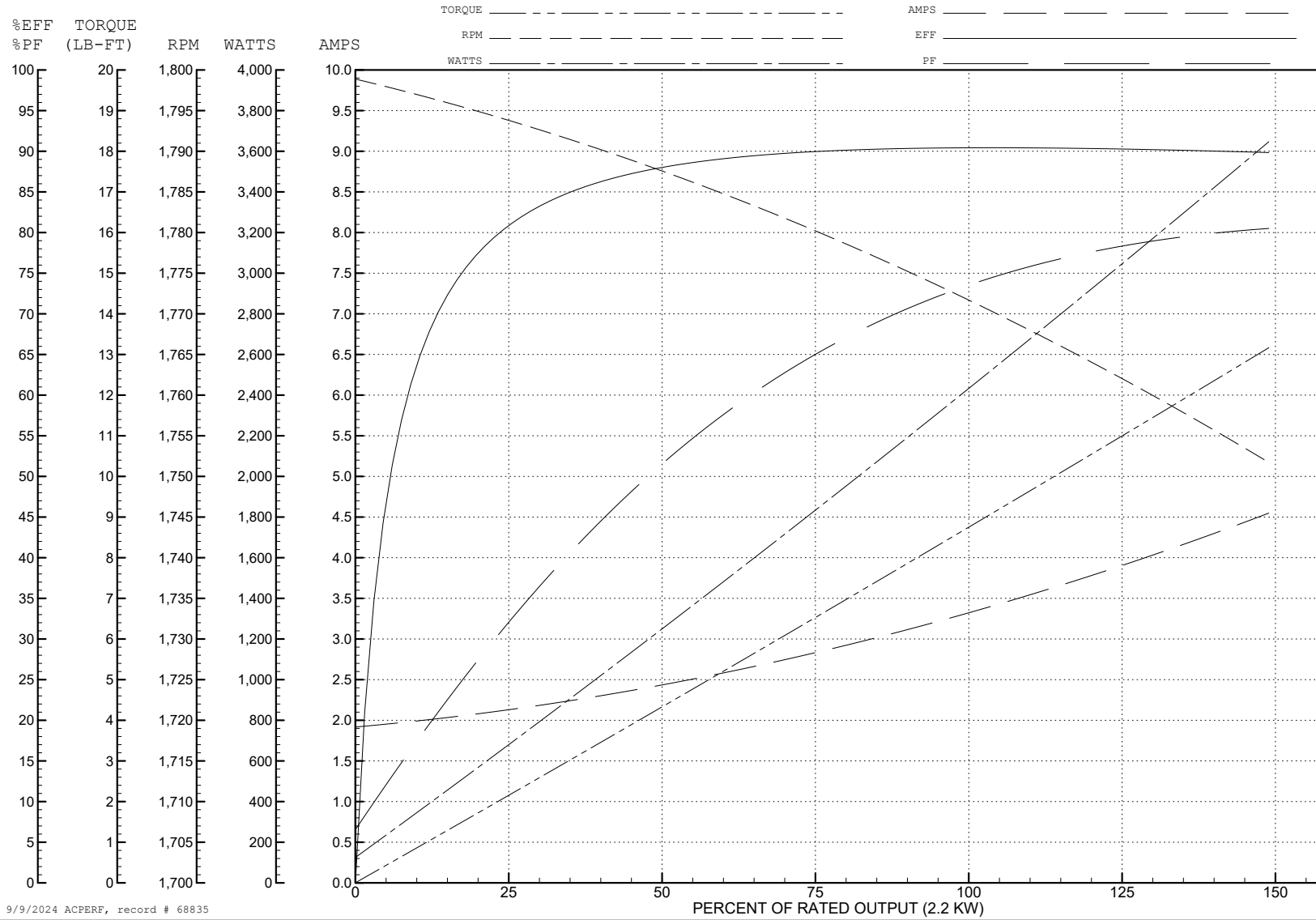
ABB Motors and Mechanical Inc.

WINDING # 36WGS582

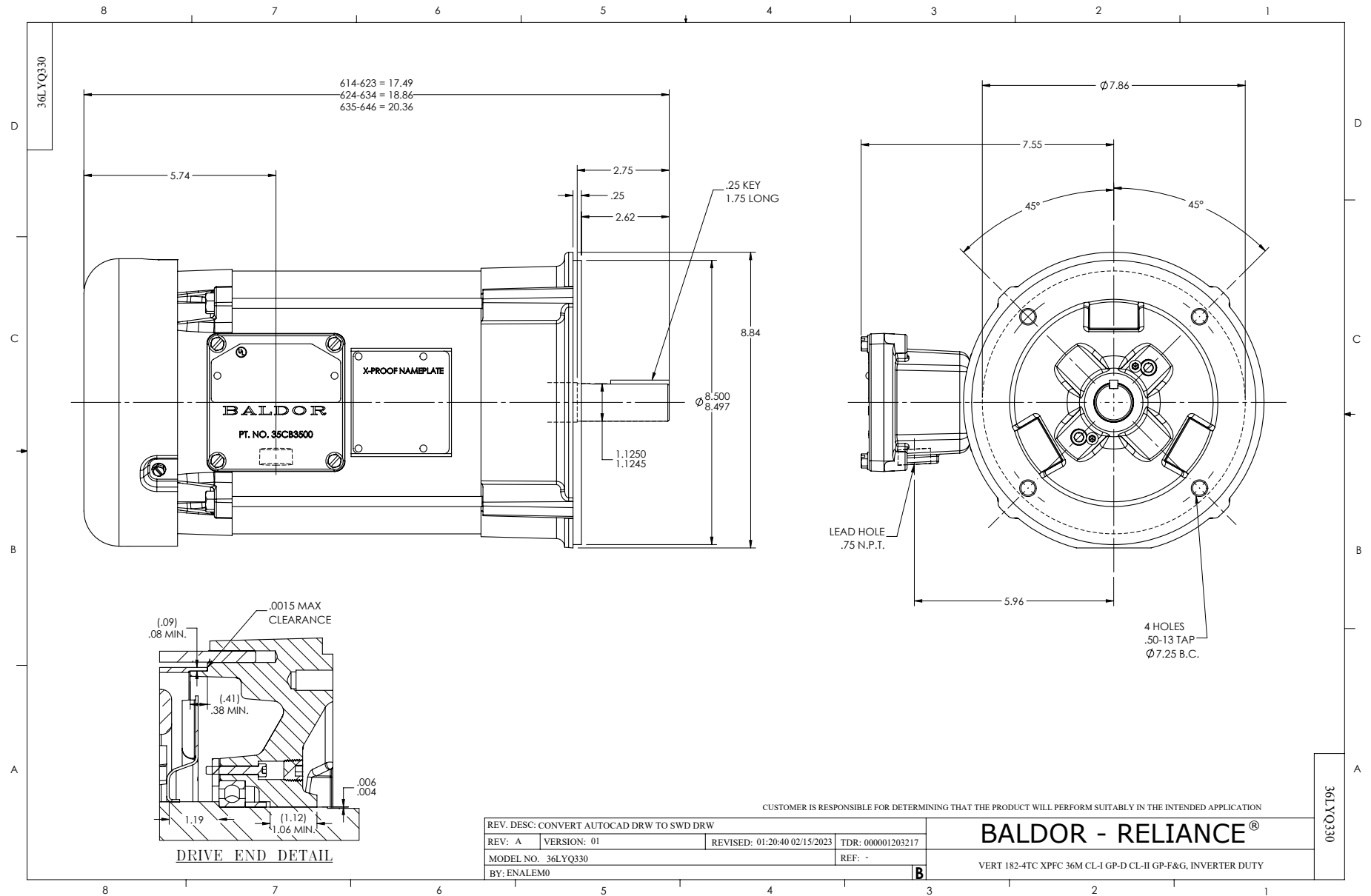
2.2 KW 3 PH 60 HZ 1760 RPM 575 V 3632M

Typical performance - not guaranteed values.

TORQUES (LB-FT): PO=36.5 PU=19.2 LR=22.4 LRA=26.8



9/9/2024 ACPERF, record # 68835



CD0006



NOTES:

1. THREE LEAD MOTOR MAY BE EITHER WYE CONNECTED OR DELTA CONNECTED.
2. INTERCHANGE ANY TWO LINE LEADS TO REVERSE ROTATION.
3. OPTIONAL THERMOSTATS ARE PROVIDED WHEN SPECIFIED.
4. ACTUAL NUMBER OF INTERNAL PARALLEL CIRCUITS MAY VARY.
5. LEAD COLORS ARE OPTIONAL. LEADS MUST BE NUMBERED AS SHOWN.

CD0006

REV. DESC: ADD CLASS CONN00000007		
REV. LTR: E	VERSION: 01	TDR: 000001099922
FILE: \AAA\00005\141	REVISED: 10:24:49 02/19/2019	BY: ENBRIRO
MTL: -	© □	

BALDOR - RELIANCE®

3PH, SV, 3 LEADS, WYE OR DELTA CONNECTED

SH 1 of 1