

ABB BALDOR RELIANCE III

Customer information packet

VXM05162

1//.75HP, 1155//970RPM, 3PH, 60//50HZ, 56C, 3

Class - CLI GP D; CLII GP F,G

Division - Division I

Specifications

Enclosure	XPFC
Frame	56C
Frame Material	Steel
Frequency	50.00 Hz 60.00 Hz
Haz Area Class and Group	CLI GP D; CLII GP F,G
Haz Area Division	Division I
Motor Letter Type	Three Phase
Output @ Frequency	1.000 HP @ 60 HZ .750 HP @ 50 HZ
Phase	3
Synchronous Speed @ Frequency	1200 RPM @ 60 HZ
Voltage @ Frequency	190.0 V @ 50 HZ 230.0 V @ 60 HZ 380.0 V @ 50 HZ 460.0 V @ 60 HZ
Agency Approvals	CSA EEV UL
Ambient Temperature	40 °C
Auxiliary Box	NO AUXILLARY BOX
Auxiliary Box Lead Termination	None
Base Indicator	No Mounting
Bearing Grease Type	Polyrex EM (-20F +300F)
Blower	None
Current @ Voltage	3.500 A @ 208.0 V 3.200 A @ 190.0 V 3.000 A @ 230.0 V 1.600 A @ 380.0 V 1.500 A @ 460.0 V
Design Code	B
Drip Cover	No Drip Cover
Duty Rating	CONT

Part Detail

Revision	D
Type	AC
Mech. spec.	35Q643
Base	
Status	PRD/A
Elec. spec.	35WGG019
Layout	35LYQ643
Eff. date	05-27-2026
CD Diagram	CD0005
Poles	06
Leads	9#18
Proprietary	False
Created date	02-23-2023

Efficiency @ 100% Load	82.5 %
Electrically Isolated Bearing	Not Electrically Isolated
Feedback Device	NO FEEDBACK
Front Shaft Indicator	None
Heater Indicator	No Heater
High Voltage Full Load Amps	1.5 a
Insulation Class	F
Inverter Code	Inverter Duty
KVA Code	J
Lifting Lugs	No Lifting Lugs
Locked Bearing Indicator	Locked Bearing
Max Speed	1800 rpm
Motor Lead Quantity/Wire Size	9 @ 18 AWG
Motor Lead Termination	Flying Leads
Motor Standards	NEMA
Motor Type	3526M
Mounting Arrangement	F1
Number of Poles	6
Overall Length	15.12 IN
Power Factor	67
Product Family	General Purpose
Pulley End Bearing Type	Ball
Pulley Face Code	C-Face
Pulley Shaft Indicator	Standard
Rodent Screen	None
Service Factor	1.00
Shaft Diameter	0.625 IN
Shaft Ground Indicator	No Shaft Grounding
Shaft Rotation	Reversible
Speed	1155 rpm 970 rpm
Speed Code	Single Speed
Starting Method	Direct on line
Thermal Device - Bearing	None

Thermal Device - Winding	Normally Closed Thermostat
Vibration Sensor Indicator	No Vibration Sensor
Winding Thermal 1	None
Winding Thermal 2	None

Nameplate

NP0887XPSL									
NO.					CC				
S/N					TEMP CODE	T3C			
SPEC.	35Q643G019				INV.TYPE	PWM			
CAT.NO.	VXM05162				C HP FR	60	C HP TO	90	
HP	1//.75				CT HZ FROM	6	CT HZ TO	60	
VOLTS	230/460//190/380				VT HZ FROM	6	VT HZ TO	60	
AMPS	3/1.5//3.2/1.6			MAG CUR	2/1				
RPM	1155//970			MX RPM	1800				
HZ	60//50	PH	3	CL	F	NOM.EFF.	82.5		
SER.F.	1.00	DES	B	SL HZ	1.5	WK2	0.189		
FRAME	56C	RATING	40C AMB-CONT						
	NEMA MG-1 PART 5, IP54								
	1.15 SF ON SINE WAVE								

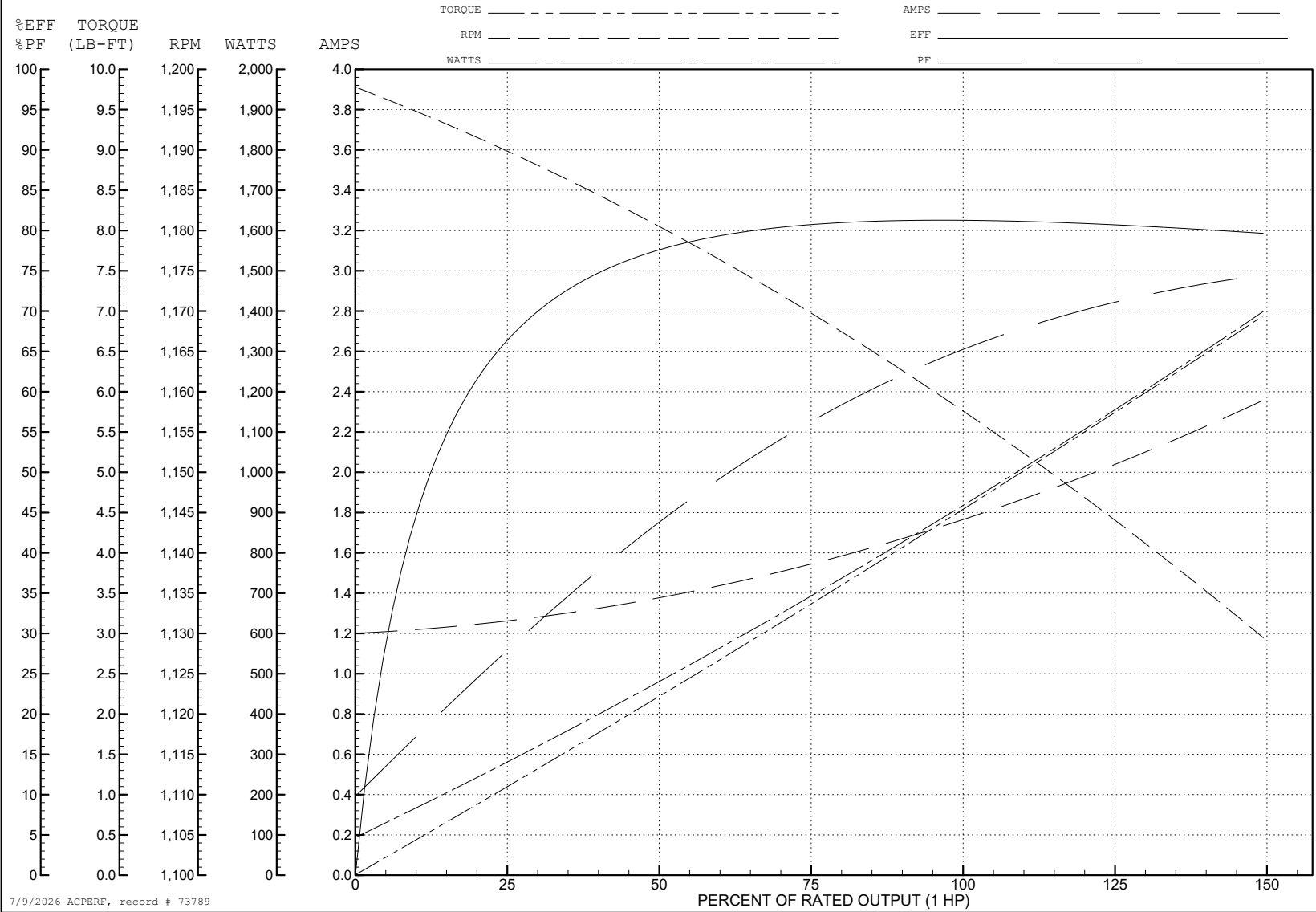
ABB Motors and Mechanical Inc.

WINDING # 35WGM497

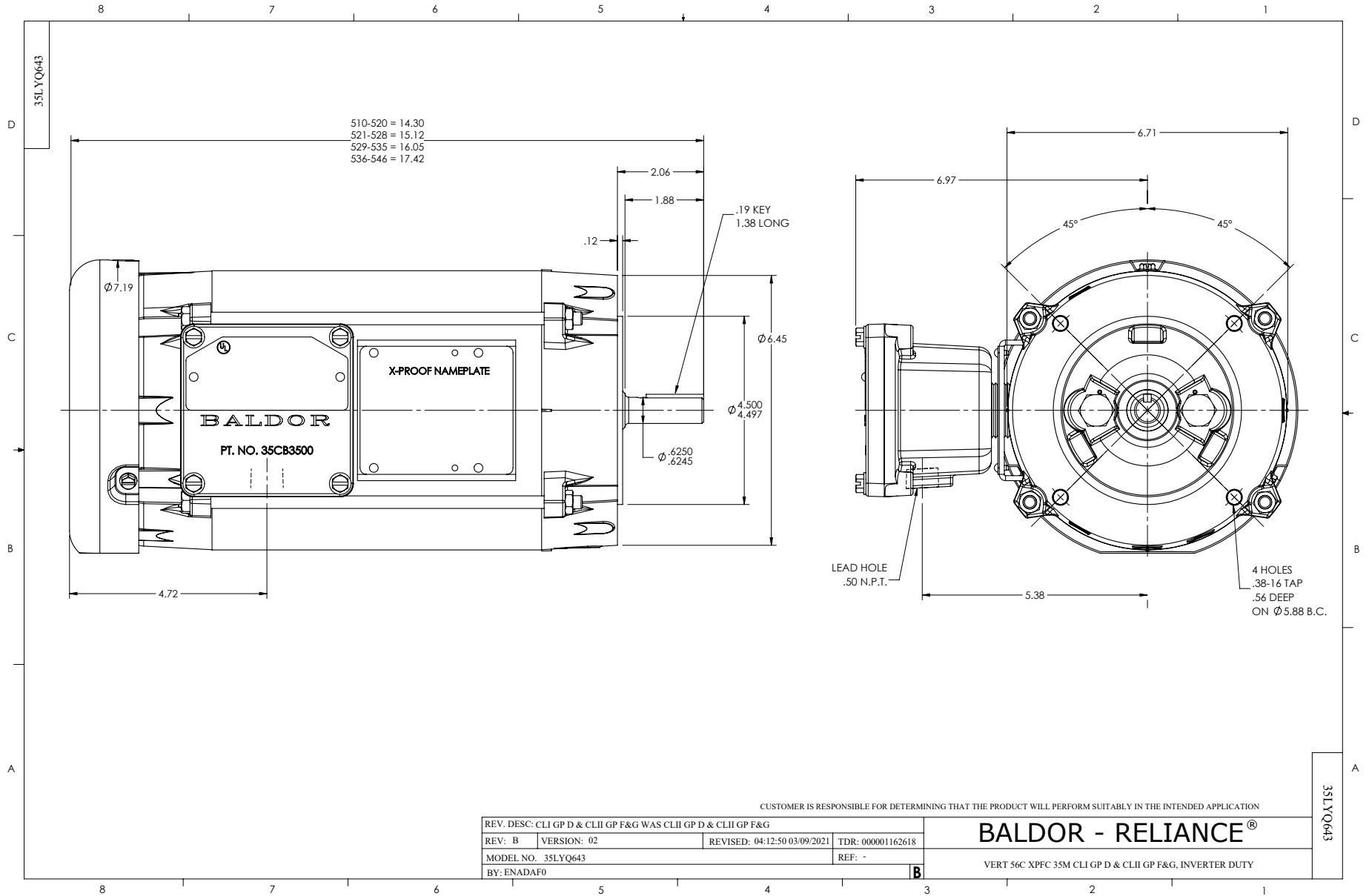
1 HP 3 PH 60 HZ 1158 RPM 460 V 3526M

Typical performance - not guaranteed values.

TORQUES (LB-FT): PO=15.23 PU=11.1 LR=11.9 LRA=10.8



7/9/2026 ACPERF, record # 73789



CD0005

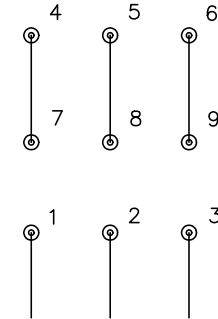


LOW VOLTAGE
(2Y)



LINE

HIGH VOLTAGE
(1Y)



LINE

NOTES:

1. INTERCHANGE ANY TWO LINE LEADS TO REVERSE ROTATION.
2. OPTIONAL THERMOSTATS ARE PROVIDED WHEN SPECIFIED.
3. ACTUAL NUMBER OF INTERNAL PARALLEL CIRCUITS MAY BE A MULTIPLE OF THOSE SHOWN ABOVE.
4. LEAD COLORS ARE OPTIONAL. LEADS MUST ALWAYS BE NUMBERED AS SHOWN.

CD0005

REV. DESC: REVISE TO SHOW OPTIONAL COLORS

REV. LTR: E

BY: JLP

REVISED: 01/19/99 10:15

TDR: 0171435

500000

FILE: AAA00005140

MDL: -

MTL: -

BALDOR ELECTRIC Co.

3PH, DV, 9 LEADS