



Customer information packet

VXM050762A

.75HP, 1180RPM, 3PH, 60HZ, 56C, 3524M, XPFC, F1

Class - CLI GP D; CLII GP F,G

Division - Division I

Specifications

Enclosure	XPFC
Frame	56C
Frame Material	Steel
Frequency	60.00 Hz
Haz Area Class and Group	CLI GP D; CLII GP F,G
Haz Area Division	Division I
Motor Letter Type	Three Phase
Output @ Frequency	.750 HP @ 60 HZ
Phase	3
Synchronous Speed @ Frequency	1200 RPM @ 60 HZ
Voltage @ Frequency	230.0 V @ 60 HZ 460.0 V @ 60 HZ
Agency Approvals	UL CSA
Ambient Temperature	40 °C
Auxillary Box	No Auxillary Box
Auxillary Box Lead Termination	None
Base Indicator	No Mounting
Bearing Grease Type	Polyrex EM (-20F +300F)
Blower	None
Current @ Voltage	1.550 A @ 460.0 V 3.100 A @ 230.0 V
Design Code	B
Drip Cover	No Drip Cover
Duty Rating	CONT
Efficiency @ 100% Load	81.5 %
Electrically Isolated Bearing	Not Electrically Isolated
Feedback Device	NO FEEDBACK
Front Shaft Indicator	None
Haz Area Temp Code	T4
Heater Indicator	No Heater
High Voltage Full Load Amps	1.6 a

Part detail

Revision	A
Type	AC
Mech. spec.	35E372
Base	
Status	PRD/A
Elec. spec.	35WGG281
Layout	35LYE372
Eff. date	02-05-2025
CD Diagram	CD0007
Poles	06
Leads	12#18
Proprietary	False
Created date	02-23-2023

Insulation Class	F
Inverter Code	Inverter Ready
KVA Code	K
Lifting Lugs	No Lifting Lugs
Locked Bearing Indicator	Locked Bearing
Motor Lead Quantity/Wire Size	12 @ 18 AWG
Motor Lead Termination	Flying Leads
Motor Standards	NEMA
Motor Type	X3524M
Mounting Arrangement	F1
Number of Poles	6
Overall Length	15.15 IN
Power Factor	63
Product Family	General Purpose
Pulley End Bearing Type	Ball
Pulley Face Code	C-Face
Pulley Shaft Indicator	Standard
Rodent Screen	None
Service Factor	1.00
Shaft Diameter	0.625 IN
Shaft Ground Indicator	No Shaft Grounding
Shaft Rotation	Reversible
Shaft Slinger Indicator	No Slinger
Speed	1180 rpm
Speed Code	Single Speed
Starting Method	Direct on line
Thermal Device - Bearing	None
Thermal Device - Winding	None
Vibration Sensor Indicator	No Vibration Sensor
Winding Thermal 1	Automatic Thermal Overload
Winding Thermal 1 Location	ES
Winding Thermal 2	None

Nameplate

NP0016XPSL					
NO.		CC			
SER. #					
SPEC	35E372G281				
CAT.NO.	VXM050762A				
H.P.	.75	T. CODE	T4		
VOLTS	230/460				
AMPS	3.1/1.55				
R.P.M.	1180				
HZ	60	PH	3	CLASS	F
SER.F.	1.00	DES	B	CODE	K
RATING	40C AMB-CONT				
FRAME	56C	NEMA NOM. EFF	81.5		
	PF	63			
BLANK	NEMA MG-1 PART 5, IP54				

AC Induction Motor Performance Data

Record # 91078

Preliminary Data Sheet

Winding: 35WGG281-R003		Type: 3524M	Enclosure: XPFC		
Nameplate Data			460 V, 60 Hz: High Voltage Connection		
Rated Output (HP)	.75	Full Load Torque	3.34 LB-FT		
Volts	230/460	Start Configuration	direct on line		
Full Load Amps	3.1/1.55	Breakdown Torque	12.7 LB-FT		
R.P.M.	1180	Pull-up Torque	5.7 LB-FT		
Hz	60 Phase	3	Locked-rotor Torque	7 LB-FT	
NEMA Design Code	B	KVA Code	K	Starting Current	7.5 A
Service Factor (S.F.)	1	No-load Current	1.16 A		
NEMA Nom. Eff.	81.5	Power Factor	63	Line-line Res. @ 25°C	20.1 Ω
Rating - Duty	40C AMB-CONT		Temp. Rise @ Rated Load	31°C	
			Locked-rotor Power Factor	50.5	
			Rotor inertia	0.174 lb-ft ²	

Load Characteristics 460 V, 60 Hz, 0.75 HP

% of Rated Load	25	50	75	100	125	150
Power Factor	24	38	50	59	66	71
Efficiency	62.4	75.3	80.2	82.4	83.2	83.3
Speed	1195	1191	1187	1182	1177	1172
Line amperes	1.18	1.23	1.32	1.45	1.6	1.77

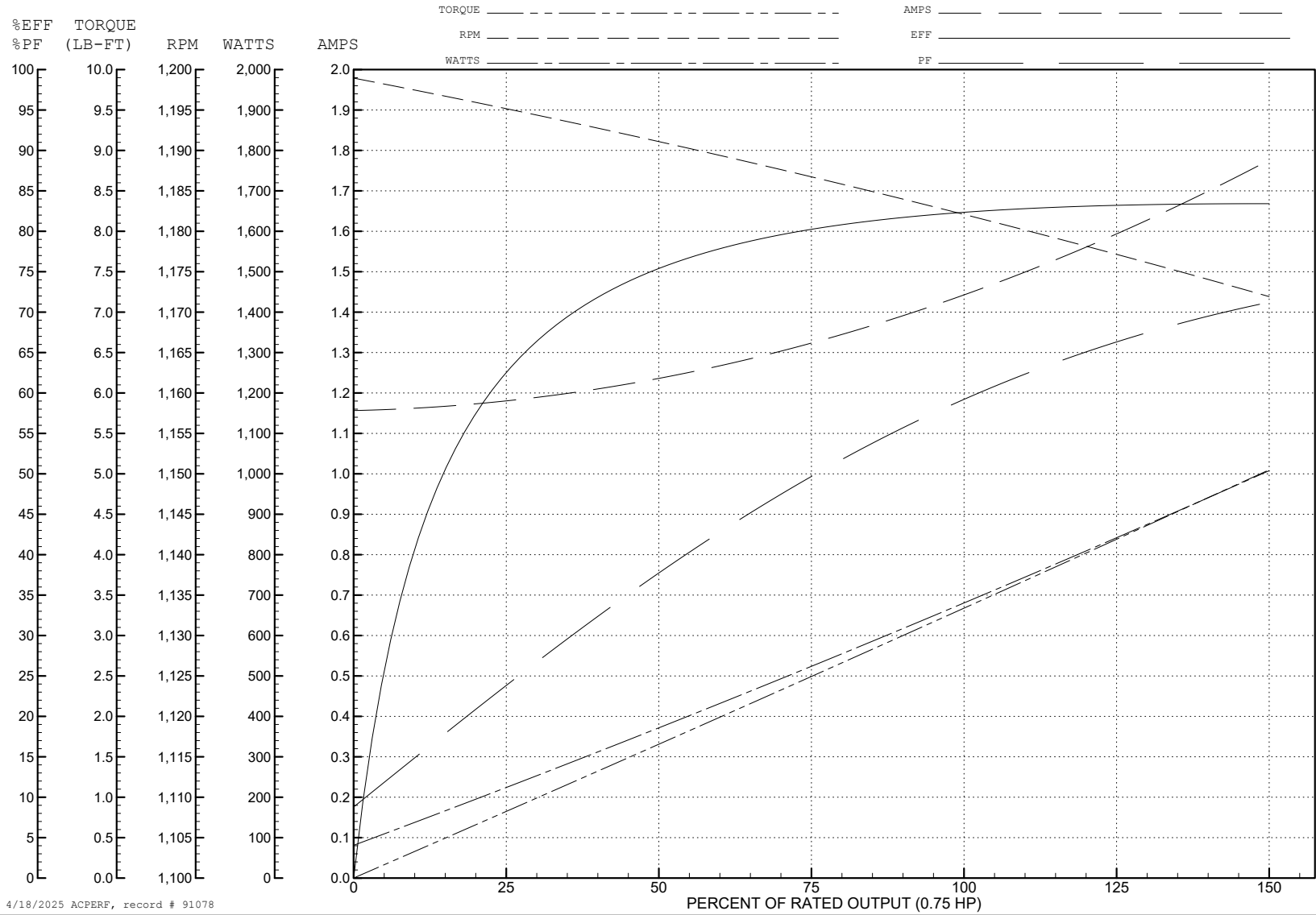
ABB Motors and Mechanical Inc.

WINDING # 35WGG281

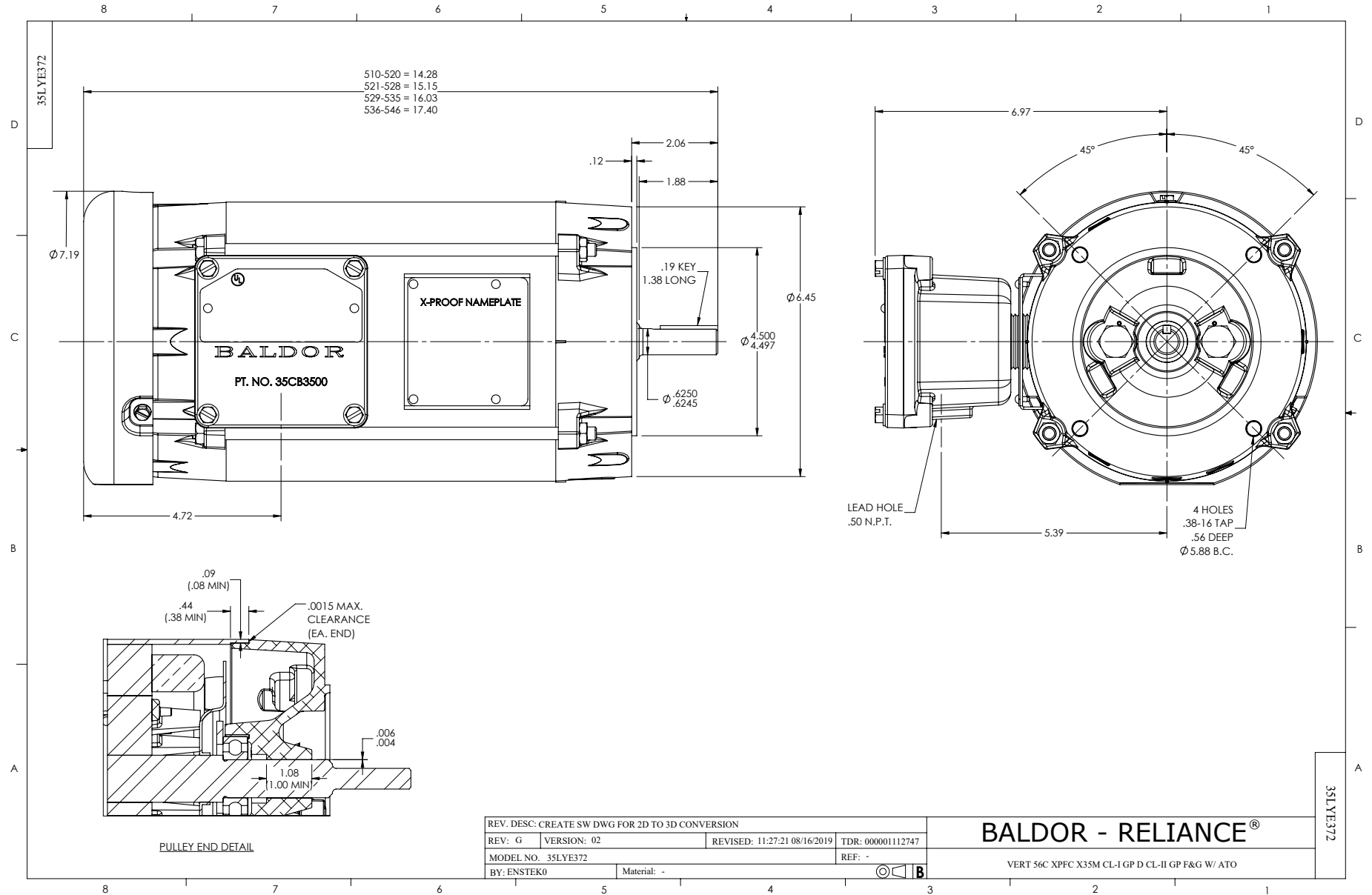
Typical performance - not guaranteed values.

0.75 HP 3 PH 60 HZ 1180 RPM 460 V 3524M

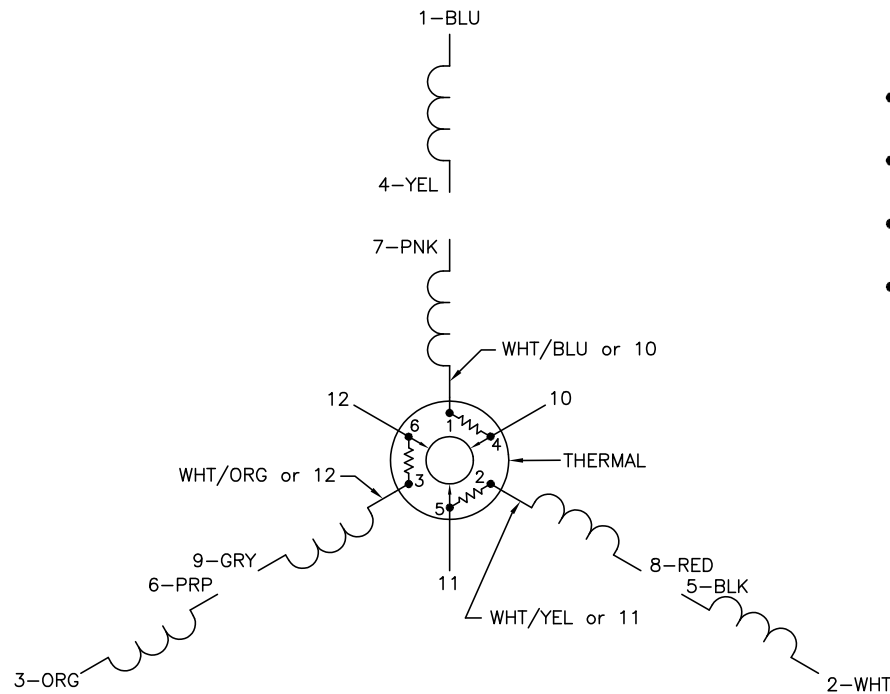
TORQUES (LB-FT): PO=12.7 PU=5.7 LR=7 LRA=7.5



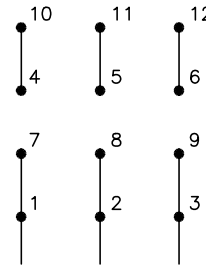
4/18/2025 ACPERF, record # 91078



CD0007

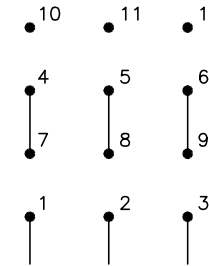


LOW VOLTAGE
(2Y)



LINE

HIGH VOLTAGE
(1Y)



LINE

NOTES:

1. INTERCHANGE ANY TWO LINE LEADS TO REVERSE ROTATION.
2. ACTUAL NUMBER OF INTERNAL PARALLEL CIRCUITS MAY VARY.
3. LEAD COLORS ARE OPTIONAL. LEADS MUST ALWAYS BE NUMBERED AS SHOWN.

CD0007

REV. DESC: ADDED "CK" PLANT CODE			
REV. LTR: E	BY: EAH	REVISED: 05/06/99 17:1	TDR: 0181040
L00000		FILE: AAA00008370	MDL: -
		MTL: -	

BALDOR ELECTRIC Co.

3PH, DV, THERMAL, 12 LEADS