

ABB BALDOR RELIANCE III

Customer information packet

VXM050542-5

.5HP, 1770RPM, 3PH, 60HZ, 56C, 3512M, XPFC, F1

Class - CLI GP D; CLII GP F,G

Division - Division I

Specifications

Enclosure	XPFC
Frame	56C
Frame Material	Steel
Frequency	60.00 Hz
Haz Area Class and Group	CLI GP D; CLII GP F,G
Haz Area Division	Division I
Motor Letter Type	Three Phase
Output @ Frequency	.500 HP @ 60 HZ
Phase	3
Synchronous Speed @ Frequency	1800 RPM @ 60 HZ
Voltage @ Frequency	575.0 V @ 60 HZ
Agency Approvals	CSA EEV UL
Ambient Temperature	40 °C
Auxiliary Box	NO AUXILLARY BOX
Auxiliary Box Lead Termination	None
Base Indicator	No Mounting
Bearing Grease Type	Polyrex EM (-20F +300F)
Blower	None
Constant Torque Speed Range	6
Current @ Voltage	.770 A @ 575.0 V
Design Code	B
Drip Cover	No Drip Cover
Duty Rating	CONT
Efficiency @ 100% Load	78.5 %
Electrically Isolated Bearing	Not Electrically Isolated
Feedback Device	NO FEEDBACK
Front Shaft Indicator	None
Haz Area Temp Code	T3C
Heater Indicator	No Heater
High Voltage Full Load Amps	0.8 a
Insulation Class	F

Part Detail

Revision	C
Type	AC
Mech. spec.	35E374
Base	
Status	PRD/A
Elec. spec.	35WGZ925
Layout	35LYE374
Eff. date	08-15-2025
CD Diagram	CD0006
Poles	04
Leads	3#18
Proprietary	False
Created date	02-23-2023

Inverter Code	Not Inverter
KVA Code	M
Lifting Lugs	No Lifting Lugs
Locked Bearing Indicator	Locked Bearing
Max Speed	2700 rpm
Motor Lead Quantity/Wire Size	3 @ 18 AWG
Motor Lead Termination	Flying Leads
Motor Standards	NEMA
Motor Type	X3512M
Mounting Arrangement	F1
Number of Poles	4
Overall Length	14.28 IN
Power Factor	65
Product Family	Hazardous Location Motor
Pulley End Bearing Type	Ball
Pulley Face Code	C-Face
Pulley Shaft Indicator	Standard
Rodent Screen	None
Service Factor	1.15
Shaft Diameter	0.625 IN
Shaft Ground Indicator	No Shaft Grounding
Shaft Rotation	Reversible
Speed	1770 rpm
Speed Code	Single Speed
Starting Method	Direct on line
Thermal Device - Bearing	None
Thermal Device - Winding	Normally Closed Thermostat
Vibration Sensor Indicator	No Vibration Sensor
Winding Thermal 1	None
Winding Thermal 2	None

Nameplate

NP0887XPSLEV

NO.		CC	
S/N		TEMP CODE	T3C
SPEC.	35E374Z925	INV.TYPE	PWM
CAT.NO.	VXM050542-5	C HP FR	60
HP	.5	C HP TO	90
VOLTS	575	CT HZ FROM	6
AMPS	.77	CT HZ TO	60
RPM	1770	VT HZ FROM	6
HZ	60	VT HZ TO	60
SER.F.	1.15	MAG CUR	.58
FRAME	56C	MX RPM	
		NOM.EFF.	78.5
		PH	3
		CL	F
		DES	B
		SL HZ	1
		WK2	0.0866
		RATING	40C AMB-CONT
		SFA	.79
			1.15 SF ON SINE WAVE

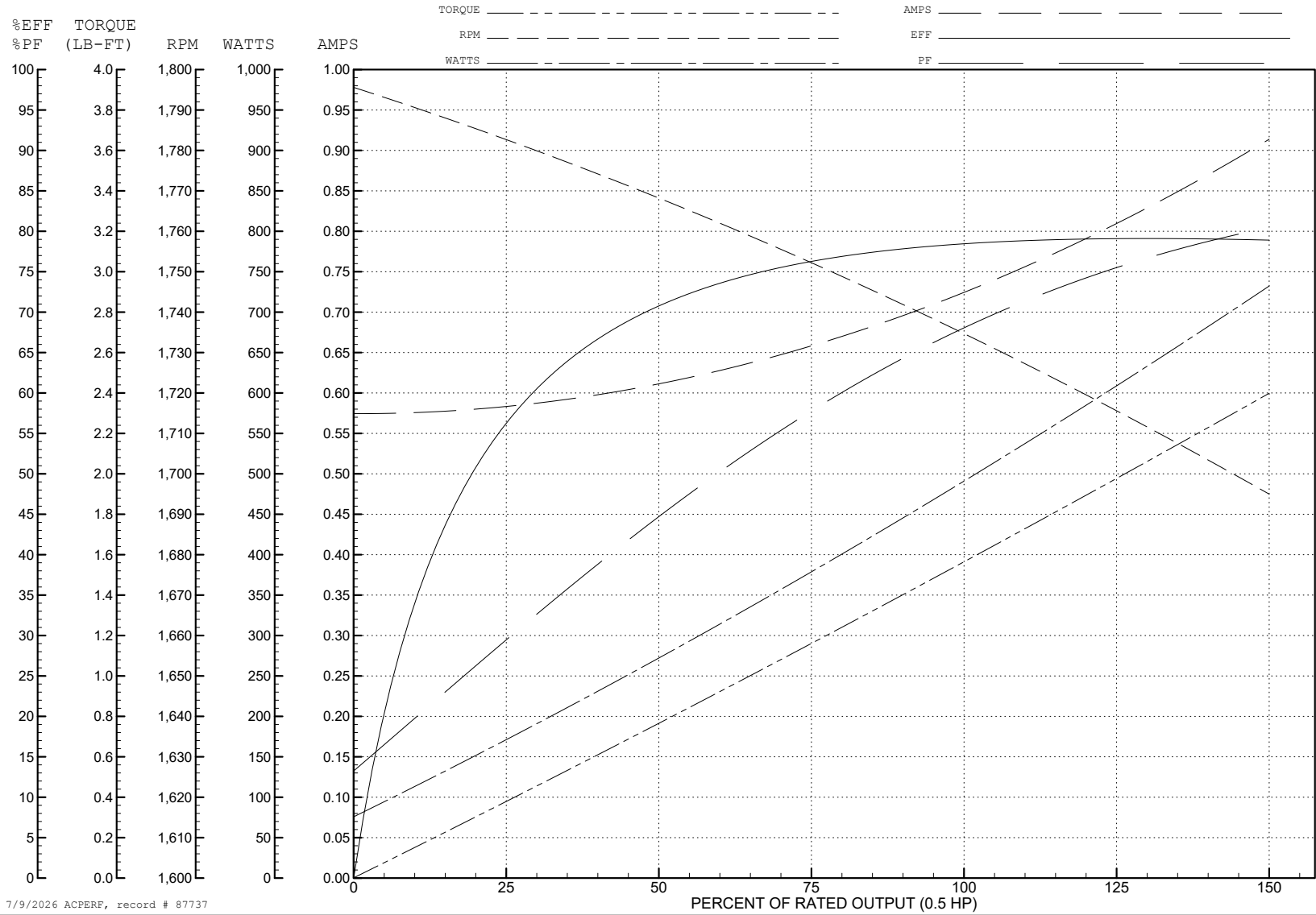
ABB Motors and Mechanical Inc.

WINDING # 35WGN367

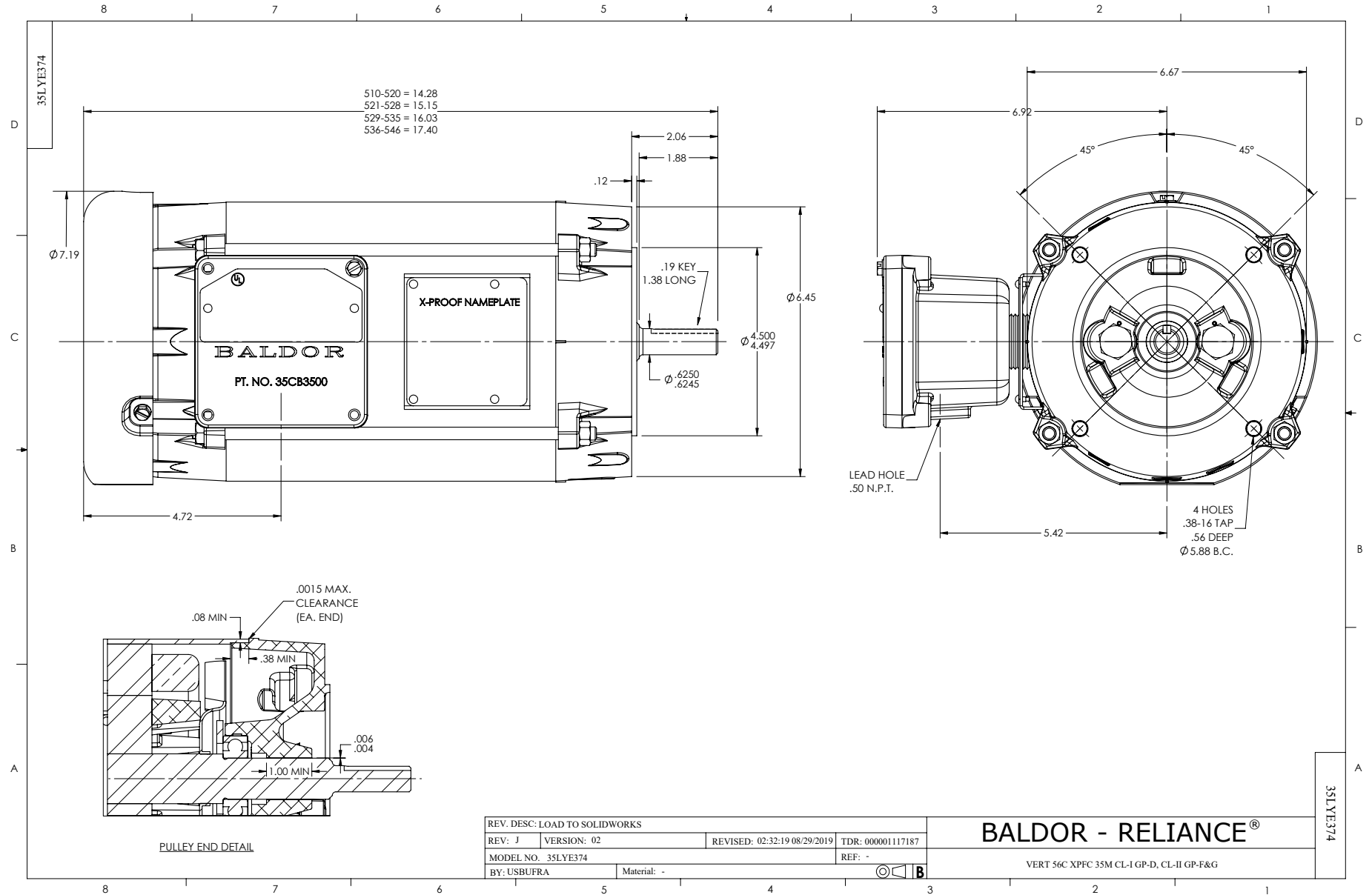
Typical performance - not guaranteed values.

0.5 HP 3 PH 60 HZ 1740 RPM 575 V 3512M

TORQUES (LB-FT): PO=7.42 PU=4.94 LR=5.58 LRA=4.87



7/9/2026 ACPERF, record # 87737



CD0006



NOTES:

1. THREE LEAD MOTOR MAY BE EITHER WYE CONNECTED OR DELTA CONNECTED.
2. INTERCHANGE ANY TWO LINE LEADS TO REVERSE ROTATION.
3. OPTIONAL THERMOSTATS ARE PROVIDED WHEN SPECIFIED.
4. ACTUAL NUMBER OF INTERNAL PARALLEL CIRCUITS MAY VARY.
5. LEAD COLORS ARE OPTIONAL. LEADS MUST BE NUMBERED AS SHOWN.

CD0006

REV. DESC: ADD CLASS CONN00000007		
REV. LTR: E	VERSION: 01	TDR: 000001099922
FILE: \AAA\00005\141	REVISED: 10:24:49 02/19/2019	BY: ENBRIRO
MTL: -	© □	

BALDOR - RELIANCE®

3PH, SV, 3 LEADS, WYE OR DELTA CONNECTED

SH 1 of 1