

ABB BALDOR RELIANCE III

Customer information packet

VWDL3504

.5HP, 1740RPM, 1PH, 60HZ, 56C, 3520L, TEFC, F1

Class - None

Division - Not Applicable

Specifications

Enclosure	TEFC
Frame	56C
Frame Material	Steel
Frequency	60.00 Hz
Haz Area Class and Group	None
Haz Area Division	Not Applicable
Motor Letter Type	Cap Start, Induction Run
Output @ Frequency	.500 HP @ 60 HZ
Phase	1
Synchronous Speed @ Frequency	1800 RPM @ 60 HZ
Voltage @ Frequency	115.0 V @ 60 HZ 230.0 V @ 60 HZ
Agency Approvals	CSA UR
Ambient Temperature	40 °C
Auxiliary Box	NO AUXILLARY BOX
Auxiliary Box Lead Termination	None
Base Indicator	No Mounting
Bearing Grease Type	Polyrex EM (-20F +300F)
Current @ Voltage	7.000 A @ 115.0 V 3.500 A @ 230.0 V 3.450 A @ 208.0 V
Design Code	N
Drip Cover	No Drip Cover
Duty Rating	CONT
Efficiency @ 100% Load	66.0 %
Electrically Isolated Bearing	Not Electrically Isolated
Feedback Device	NO FEEDBACK
Front Shaft Indicator	None
Heater Indicator	No Heater
High Voltage Full Load Amps	3.5 a
Insulation Class	F

Part Detail

Revision	C
Type	AC
Mech. spec.	35S583
Base	
Status	PRD/A
Elec. spec.	35WGG470
Layout	35LYS583
Eff. date	02-29-2024
CD Diagram	CD0001
Poles	04
Leads	6#18
Proprietary	False
Created date	08-01-2022

Inverter Code	Not Inverter
KVA Code	L
Lifting Lugs	No Lifting Lugs
Locked Bearing Indicator	Locked Bearing
Motor Lead Quantity/Wire Size	6 @ 18 AWG
Motor Lead Termination	Flying Leads
Motor Standards	NEMA
Motor Type	3520L
Mounting Arrangement	F1
Number of Poles	4
Overall Length	12.25 IN
Power Factor	70
Product Family	Wash Down
Pulley End Bearing Type	Sealed Bearing
Pulley Face Code	C-Face
Pulley Shaft Indicator	Standard
Rodent Screen	None
Service Factor	1.25
Shaft Diameter	0.625 IN
Shaft Ground Indicator	No Shaft Grounding
Shaft Rotation	Reversible
Shaft Slinger Indicator	Shaft Slinger
Speed	1740 rpm
Speed Code	Single Speed
Starting Method	Direct on line
Thermal Device - Bearing	None
Thermal Device - Winding	None
Vibration Sensor Indicator	No Vibration Sensor
Winding Thermal 1	None
Winding Thermal 2	None

Nameplate

NP1496L									
CAT.NO.	VWDL3504								
SPEC.	35S583G470								
HP	.5								
VOLTS	115/230								
AMP	7/3.5								
RPM	1740								
FRAME	56C	HZ	60	PH	1				
SER.F.	1.25	CODE	L	DES	N	CLASS	F		
NEMA-NOM-EFF	66	PF	70						
RATING	40C AMB-CONT								
CC									
DE	6205	ODE	6203						
ENCL	TEFC	SN							
	SFA 8.2/4.1								

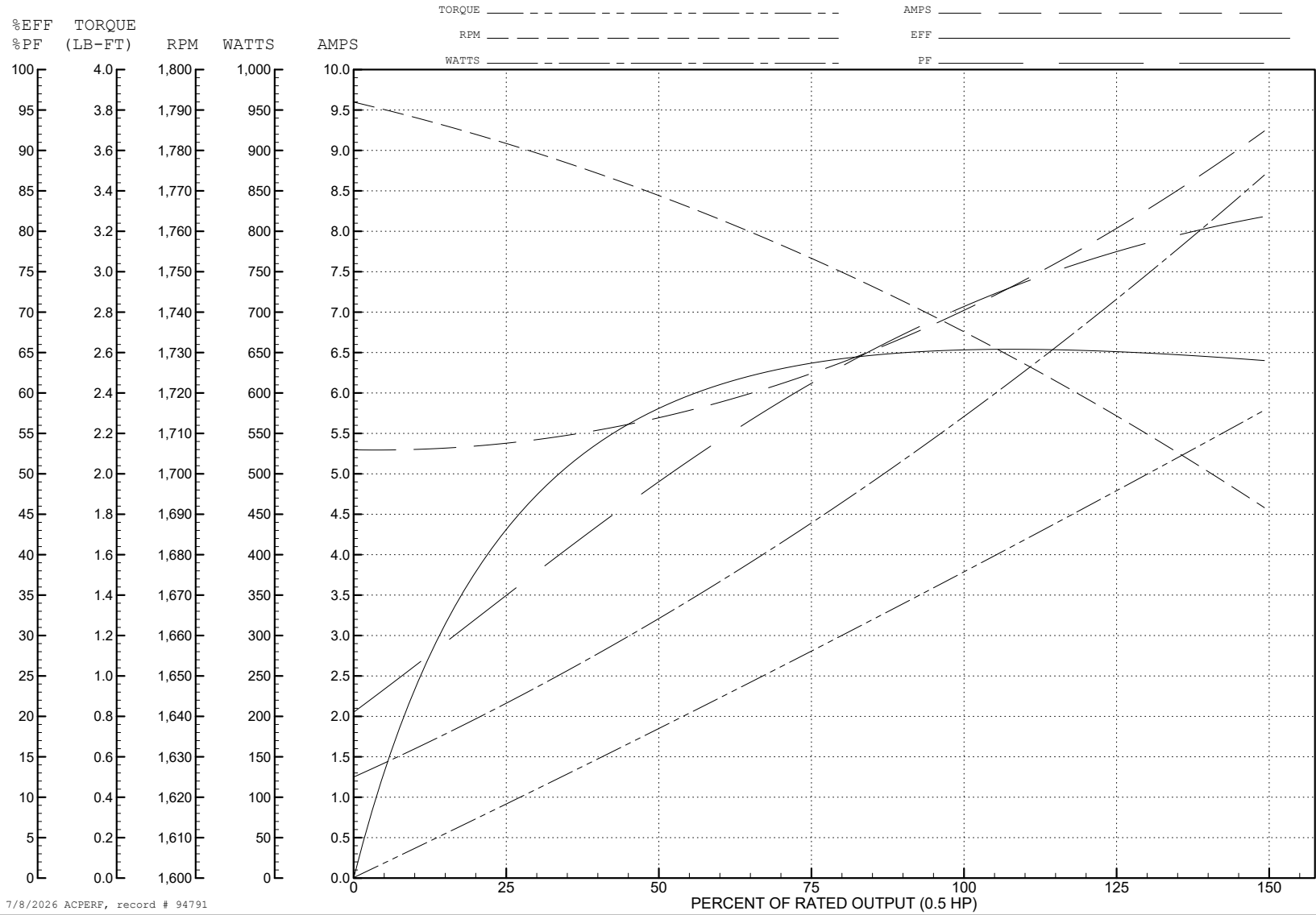
ABB Motors and Mechanical Inc.

WINDING # 35WGG470

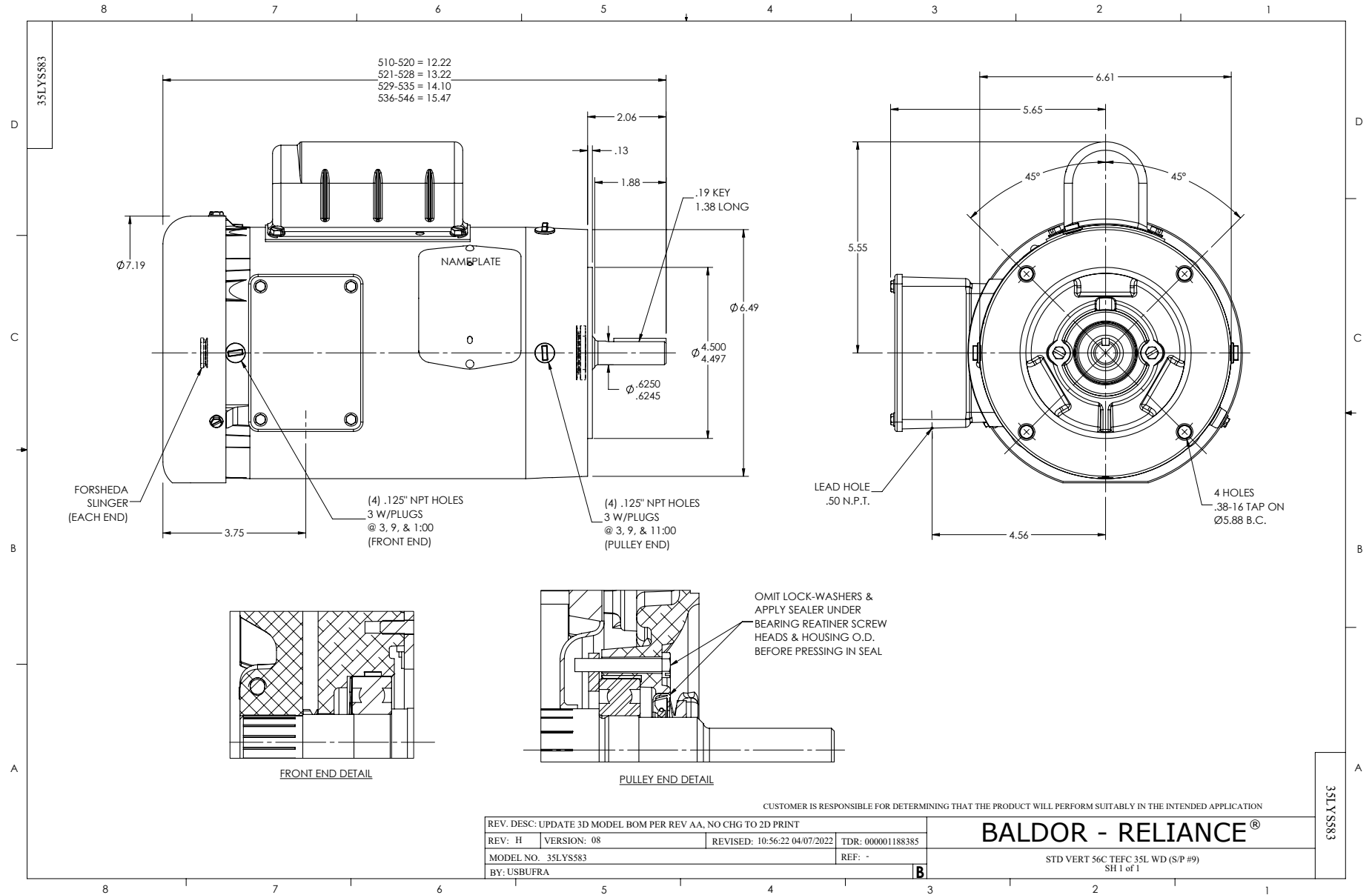
Typical performance - not guaranteed values.

0.5 HP 1 PH 60 HZ 1740 RPM 115 V 3520L

TORQUES (LB-FT): PO=4.22 PU=3.95 LR=6.21 LRA=43.3



7/8/2026 ACPERF, record # 94791



CD0001

