



Customer information packet

VSPM3611T

3HP, 1765RPM, 3PH, 60HZ, 182TC, 3642M, TEFC, F1

Class - None

Division - Not Applicable

Specifications

| | |
|--------------------------------|--|
| Enclosure | TEFC |
| Frame | 182TC |
| Frame Material | Steel |
| Frequency | 60.00 Hz |
| Haz Area Class and Group | None |
| Haz Area Division | Not Applicable |
| Motor Letter Type | Three Phase |
| Output @ Frequency | 3.000 HP @ 60 HZ |
| Phase | 3 |
| Synchronous Speed @ Frequency | 1800 RPM @ 60 HZ |
| Voltage @ Frequency | 230.0 V @ 60 HZ 460.0 V @ 60 HZ |
| Agency Approvals | CURUSEEV NEMA_PREMIUM WEEE |
| Ambient Temperature | 40 °C |
| Auxillary Box | No Auxillary Box |
| Auxillary Box Lead Termination | None |
| Base Indicator | No Mounting |
| Bearing Grease Type | Polyrex EM (-20F +300F) |
| Blower | None |
| Current @ Voltage | 4.200 A @ 460.0 V 8.400 A @ 230.0 V |
| Design Code | A |
| Drip Cover | No Drip Cover |
| Duty Rating | CONT |
| Efficiency @ 100% Load | 91.0 % |
| Electrically Isolated Bearing | Not Electrically Isolated |
| Feedback Device | NO FEEDBACK |
| Front Shaft Indicator | None |
| Heater Indicator | No Heater |
| High Voltage Full Load Amps | 4.2 a |

Part detail

| | |
|--------------|------------|
| Revision | - |
| Type | AC |
| Mech. spec. | 36P428 |
| Base | |
| Status | PRD/A |
| Elec. spec. | 36WGZ631 |
| Layout | 36LYP428 |
| Eff. date | 09-11-2024 |
| CD Diagram | CD0005 |
| Poles | 04 |
| Leads | 9#16 |
| Proprietary | False |
| Created date | 01-03-2024 |

| | |
|--------------------------------------|-----------------------|
| Insulation Class | F |
| Inverter Code | Inverter Duty |
| KVA Code | L |
| Lifting Lugs | Standard Lifting Lugs |
| Locked Bearing Indicator | Locked Bearing |
| Max Speed | 2700 rpm |
| Motor Lead Quantity/Wire Size | 9 @ 16 AWG |
| Motor Lead Termination | Flying Leads |
| Motor Standards | NEMA |
| Motor Type | 3642M |
| Mounting Arrangement | F1 |
| Number of Poles | 4 |
| Overall Length | 18.04 IN |
| Power Factor | 74 |
| Product Family | General Purpose |
| Pulley End Bearing Type | Ball |
| Pulley Face Code | C-Face |
| Pulley Shaft Indicator | Standard |
| Rodent Screen | None |
| RoHS Status | ROHS COMPLIANT |
| Service Factor | 1.15 |
| Shaft Diameter | 1.125 IN |
| Shaft Ground Indicator | No Shaft Grounding |
| Shaft Rotation | Reversible |
| Shaft Slinger Indicator | No Slinger |
| Speed | 1765 rpm |
| Speed Code | Single Speed |
| Starting Method | Direct on line |
| Thermal Device - Bearing | None |
| Thermal Device - Winding | None |
| Vibration Sensor Indicator | No Vibration Sensor |
| Winding Thermal 1 | None |
| Winding Thermal 2 | None |

Nameplate

NP4423A01A01L

| | | | | | | | |
|--------------------|----------------------|----------------|----------------------|-------------|------------|--------------|-------|
| CAT # | VSPM3611T | | WGT | 93 | LBS | | |
| SPEC | 36P428Z631 | | ENCL | TEFC | | | |
| SER # | | CC | 010A | IP | 54 | | |
| HP | 3 | MAG CUR | 4.8/2.4 | | | | |
| VOLTS | 230/460 | | NEMA NOM. EFF | 91 | | | |
| AMPS | 8.4/4.2 | | PF | 74 | | | |
| RATING | 40C AMB-CONT | | | | | | |
| RPM | 1765 | | MAX RPM | 2700 | | | |
| FRAME | 182TC | HZ | 60 | CODE | L | CLASS | F |
| SER.F. | 1.15 | SF AMP | 9.4/4.7 | PH | 3 | DES | A |
| DE | 6206 | ODE | 6205 | | | | |
| LUBRICATION | POLYREX EM | | | | | | |
| ID LOGO | INVERTER TYPE | VPWM | CHP | 60 | TO | 90 | 1.5:1 |
| ID LOGO | WK2 | 0.39 | CT | 6 | TO | 60 | 10:1 |
| ID LOGO | SL HZ | 1.2 | VT | 3 | TO | 60 | 20:1 |
| | | | | | | | |
| | | | | | | | |
| | | | | | | | |
| | | | | | | | |
| | | | | | | | |
| | | | | | | | |
| | | | | | | | |
| | | | | | | | |
| | | | | | | | |
| | | | | | | | |
| | | | | | | | |
| YR | | | | | | | |

AC Induction Motor Performance Data

Record # 96363

Typical performance - not guaranteed values

| Winding: 36WGZ631-R001 | | Type: 3642M | | Enclosure: TEFC | |
|-------------------------------|--------------|----------------------------|--|----------------------------------|--------------------------|
| Nameplate Data | | | 460 V, 60 Hz: High Voltage Connection | | |
| Rated Output (HP) | 3 | Full Load Torque | 8.92 LB-FT | | |
| Volts | 230/460 | Start Configuration | direct on line | | |
| Full Load Amps | 8.4/4.2 | Breakdown Torque | 37.4 LB-FT | | |
| R.P.M. | 1765 | Pull-up Torque | 21.2 LB-FT | | |
| Hz | 60 | Phase | 3 | Locked-rotor Torque | 25.1 LB-FT |
| NEMA Design Code | A | KVA Code | L | Starting Current | 34.6 A |
| Service Factor (S.F.) | | | 1.15 | No-load Current | 2.42 A |
| NEMA Nom. Eff. | 91 | Power Factor | 74 | Line-line Res. @ 25°C | 2.59 Ω |
| Rating - Duty | 40C AMB-CONT | | | Temp. Rise @ Rated Load | 39°C |
| S.F. Amps | 9.4/4.7 | | | Temp. Rise @ S.F. Load | 45°C |
| | | | | Locked-rotor Power Factor | 39 |
| | | | | Rotor inertia | 0.391 lb-ft ² |

Load Characteristics 460 V, 60 Hz, 3 HP

| % of Rated Load | 25 | 50 | 75 | 100 | 125 | 150 | S.F. |
|------------------------|-----------|-----------|-----------|------------|------------|------------|-------------|
| Power Factor | 32 | 52 | 65 | 74 | 77 | 80 | 76 |
| Efficiency | 83 | 89 | 91 | 91 | 90 | 89 | 90.4 |
| Speed | 1794 | 1785 | 1777 | 1767 | 1756 | 1745 | 1760 |
| Line amperes | 2.58 | 3.01 | 3.55 | 4.18 | 5.01 | 5.87 | 4.68 |

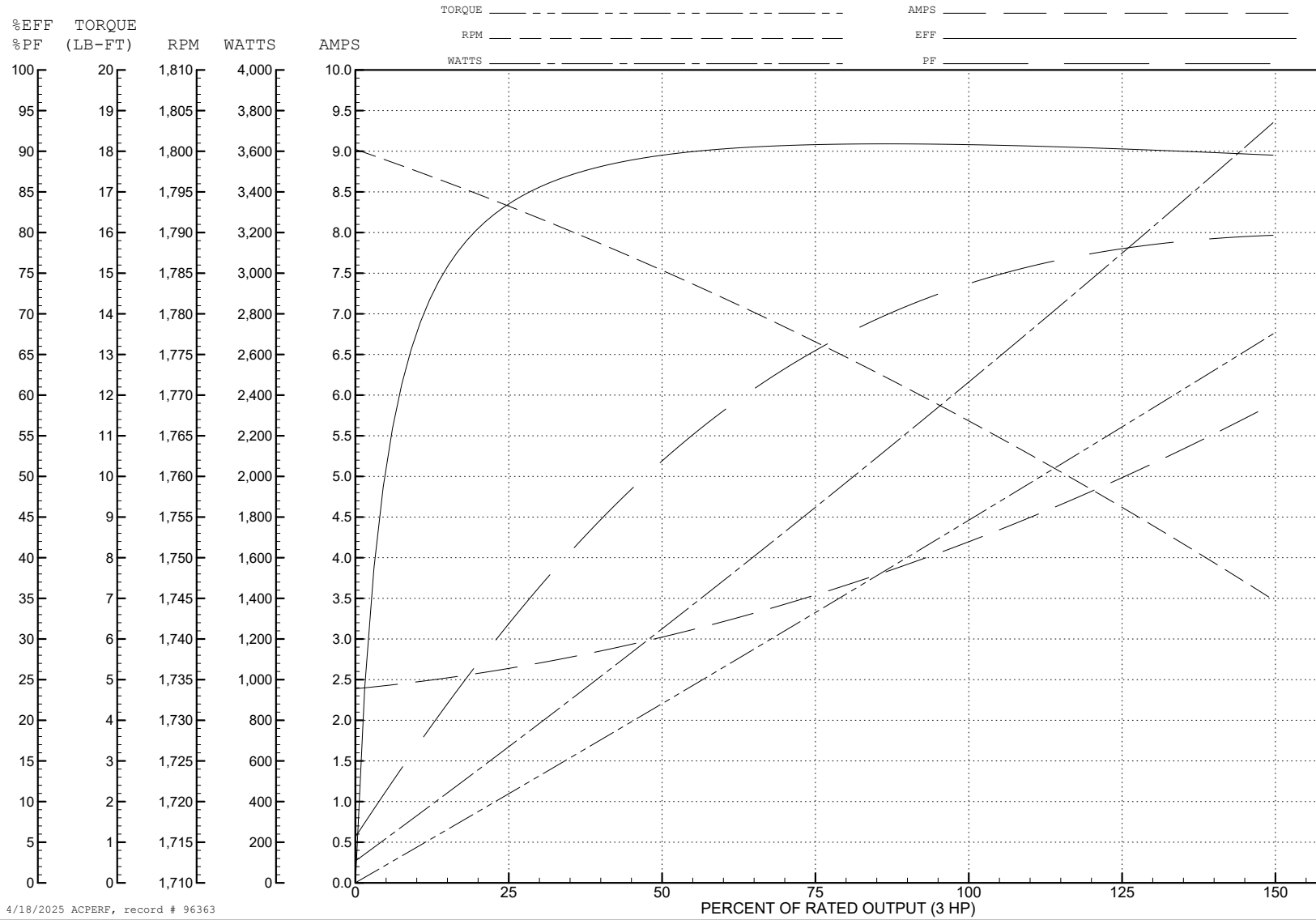
ABB Motors and Mechanical Inc.

WINDING # 36WGZ631

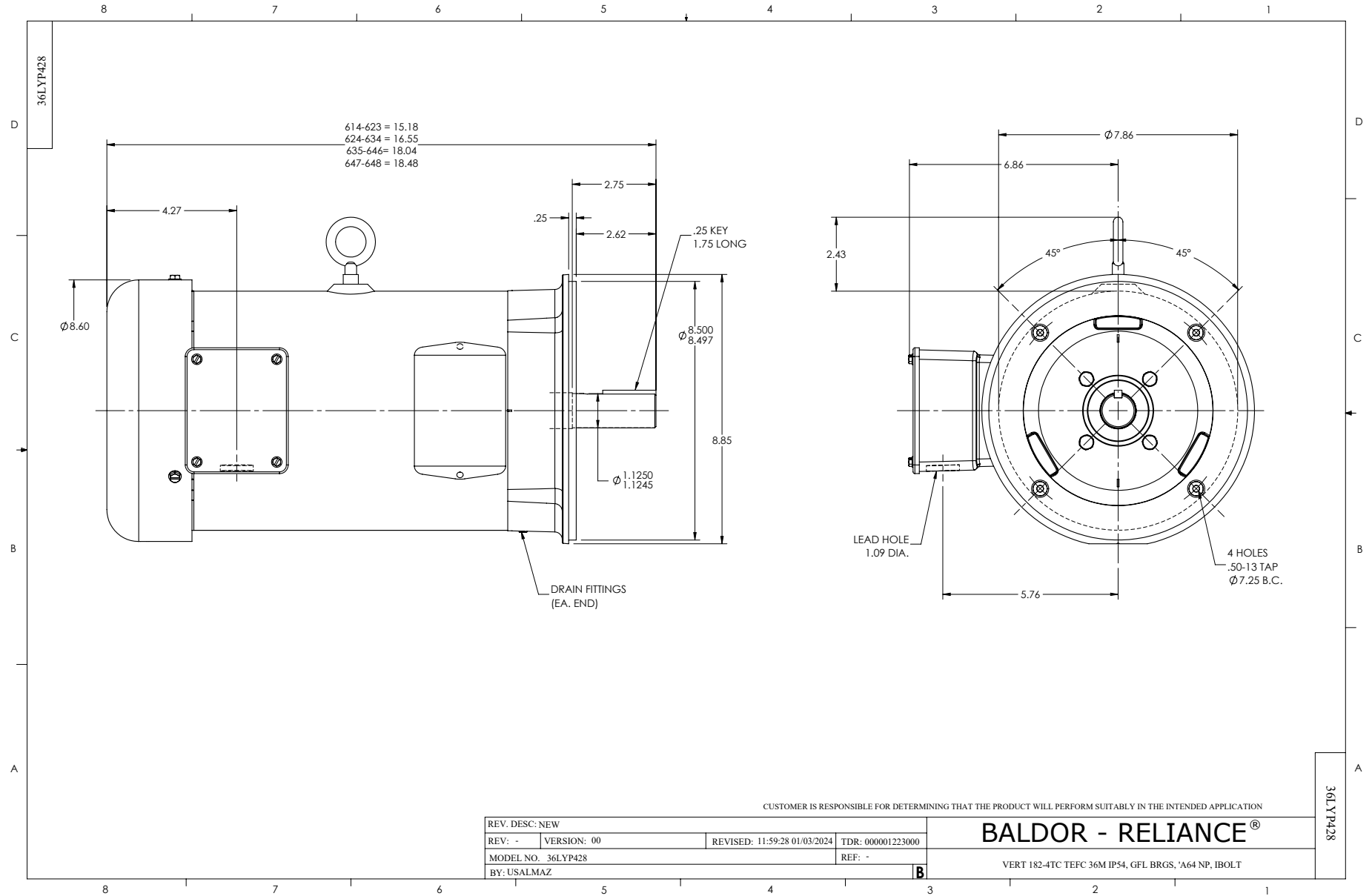
3 HP 3 PH 60 HZ 1765 RPM 460 V 3642M

Typical performance - not guaranteed values.

TORQUES (LB-FT): PO=37.4 PU=21.2 LR=25.1 LRA=34.6



4/18/2025 ACPERF, record # 96363



CD0005



LOW VOLTAGE
(2Y)



LINE

HIGH VOLTAGE
(1Y)



LINE

NOTES:

1. INTERCHANGE ANY TWO LINE LEADS TO REVERSE ROTATION.
2. OPTIONAL THERMOSTATS ARE PROVIDED WHEN SPECIFIED.
3. ACTUAL NUMBER OF INTERNAL PARALLEL CIRCUITS MAY BE A MULTIPLE OF THOSE SHOWN ABOVE.
4. LEAD COLORS ARE OPTIONAL. LEADS MUST ALWAYS BE NUMBERED AS SHOWN.

CD0005

| | | | |
|---|---------|-------------------------|--------------|
| REV. DESC: REVISE TO SHOW OPTIONAL COLORS | | | |
| REV. LTR: E | BY: JLP | REVISED: 01/19/99 10:15 | TDR: 0171435 |
| S00000 | | FILE: AAA00005140 | MDL: - |
| | | MTL: - | |

BALDOR ELECTRIC Co.

3PH, DV, 9 LEADS