



Customer information packet

VSPM3550

1.5HP, 3500RPM, 3PH, 60HZ, 56C, 3520M, TEFC, F1

Class - None

Division - Not Applicable

Specifications

Enclosure	TEFC
Frame	56C
Frame Material	Steel
Frequency	60.00 Hz
Haz Area Class and Group	None
Haz Area Division	Not Applicable
Motor Letter Type	Three Phase
Output @ Frequency	1.500 HP @ 60 HZ
Phase	3
Synchronous Speed @ Frequency	3600 RPM @ 60 HZ
Voltage @ Frequency	230.0 V @ 60 HZ 460.0 V @ 60 HZ
Agency Approvals	WEEE NEMA PREMIUM
Ambient Temperature	40 °C
Auxiliary Box	NO AUXILLARY BOX
Auxiliary Box Lead Termination	None
Base Indicator	No Mounting
Bearing Grease Type	Polyrex EM (-20F +300F)
Blower	None
Current @ Voltage	2.050 A @ 460.0 V 4.100 A @ 230.0 V
Design Code	B
Drip Cover	No Drip Cover
Duty Rating	CONT
Efficiency @ 100% Load	85.5 %
Electrically Isolated Bearing	Not Electrically Isolated
Feedback Device	NO FEEDBACK
Front Shaft Indicator	None
Heater Indicator	No Heater
High Voltage Full Load Amps	2.1 a
Insulation Class	F

Part detail

Revision	B
Type	AC
Mech. spec.	35E6403
Base	
Status	PRD/A
Elec. spec.	35WGM747
Layout	35LYE6403
Eff. date	11-19-2025
CD Diagram	CD0005
Poles	02
Leads	9#18
Proprietary	False
Created date	01-10-2024

Inverter Code	Inverter Duty
KVA Code	N
Lifting Lugs	No Lifting Lugs
Locked Bearing Indicator	Locked Bearing
Max Speed	5400 rpm
Motor Lead Quantity/Wire Size	9 @ 18 AWG
Motor Lead Termination	Flying Leads
Motor Standards	NEMA
Motor Type	3520M
Mounting Arrangement	F1
Number of Poles	2
Overall Length	12.23 IN
Power Factor	81
Product Family	General Purpose
Pulley End Bearing Type	Ball
Pulley Face Code	C-Face
Pulley Shaft Indicator	Standard
Rodent Screen	None
RoHS Status	Y
Service Factor	1.15
Shaft Diameter	0.625 IN
Shaft Ground Indicator	No Shaft Grounding
Shaft Rotation	Reversible
Shaft Slinger Indicator	No Slinger
Speed	3500 rpm
Speed Code	Single Speed
Starting Method	Direct on line
Thermal Device - Bearing	None
Thermal Device - Winding	None
Vibration Sensor Indicator	No Vibration Sensor
Winding Thermal 1	None
Winding Thermal 2	None

AC Induction Motor Performance Data

Record # 100785

Preliminary Data Sheet

Winding: 35WGM747-R001		Type: 3520M		Enclosure: TEFC	
Nameplate Data			460 V, 60 Hz: High Voltage Connection		
Rated Output (HP)	1.5		Full Load Torque	2.26 LB-FT	
Volts	230/460		Start Configuration	direct on line	
Full Load Amps	2.22/1.11		Breakdown Torque	12.5 LB-FT	
R.P.M.	3500		Pull-up Torque	7.8 LB-FT	
Hz	60 Phase	3	Locked-rotor Torque	11.1 LB-FT	
NEMA Design Code	B KVA Code	N	Starting Current	22.6 A	
Service Factor (S.F.)	1.15		No-load Current	1.11 A	
NEMA Nom. Eff.	85.5 Power Factor	81	Line-line Res. @ 25°C	7.34 Ω	
Rating - Duty	40C AMB-CONT		Temp. Rise @ Rated Load	38°C	
S.F. Amps	5.5/2.25		Temp. Rise @ S.F. Load	43°C	
			Locked-rotor Power Factor	51.9	
			Rotor inertia	0.0553 lb-ft ²	

Load Characteristics 460 V, 60 Hz, 1.5 HP

% of Rated Load	25	50	75	100	125	150	S.F.
Power Factor	41	61	73	81	85	88	83
Efficiency	71.3	81.6	84.7	85.7	85.6	84.8	85.6
Speed	3573	3549	3527	3500	3473	3445	3484
Line amperes	1.2	1.42	1.69	2.04	2.42	2.84	2.27

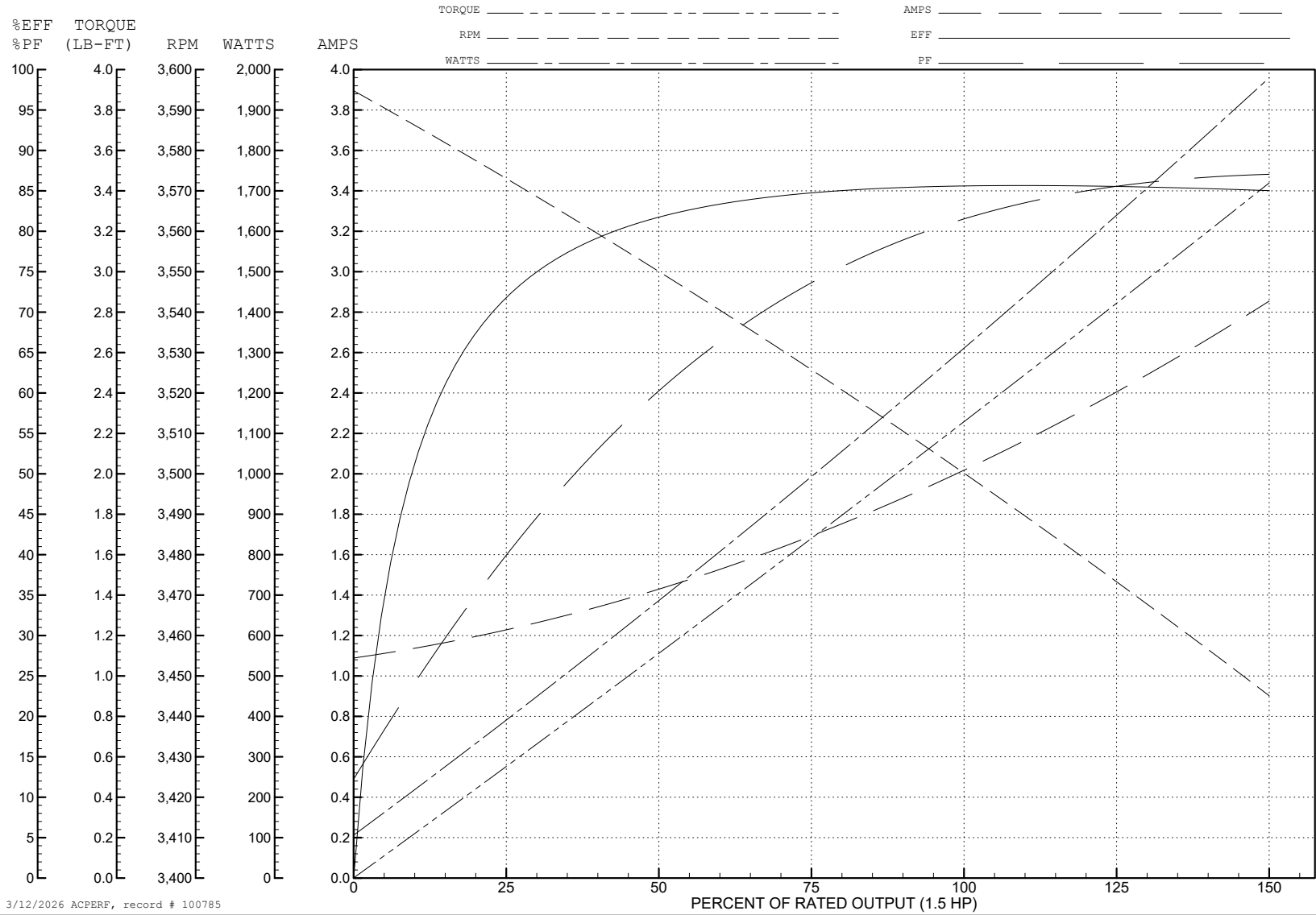
ABB Motors and Mechanical Inc.

WINDING # 35WGM747

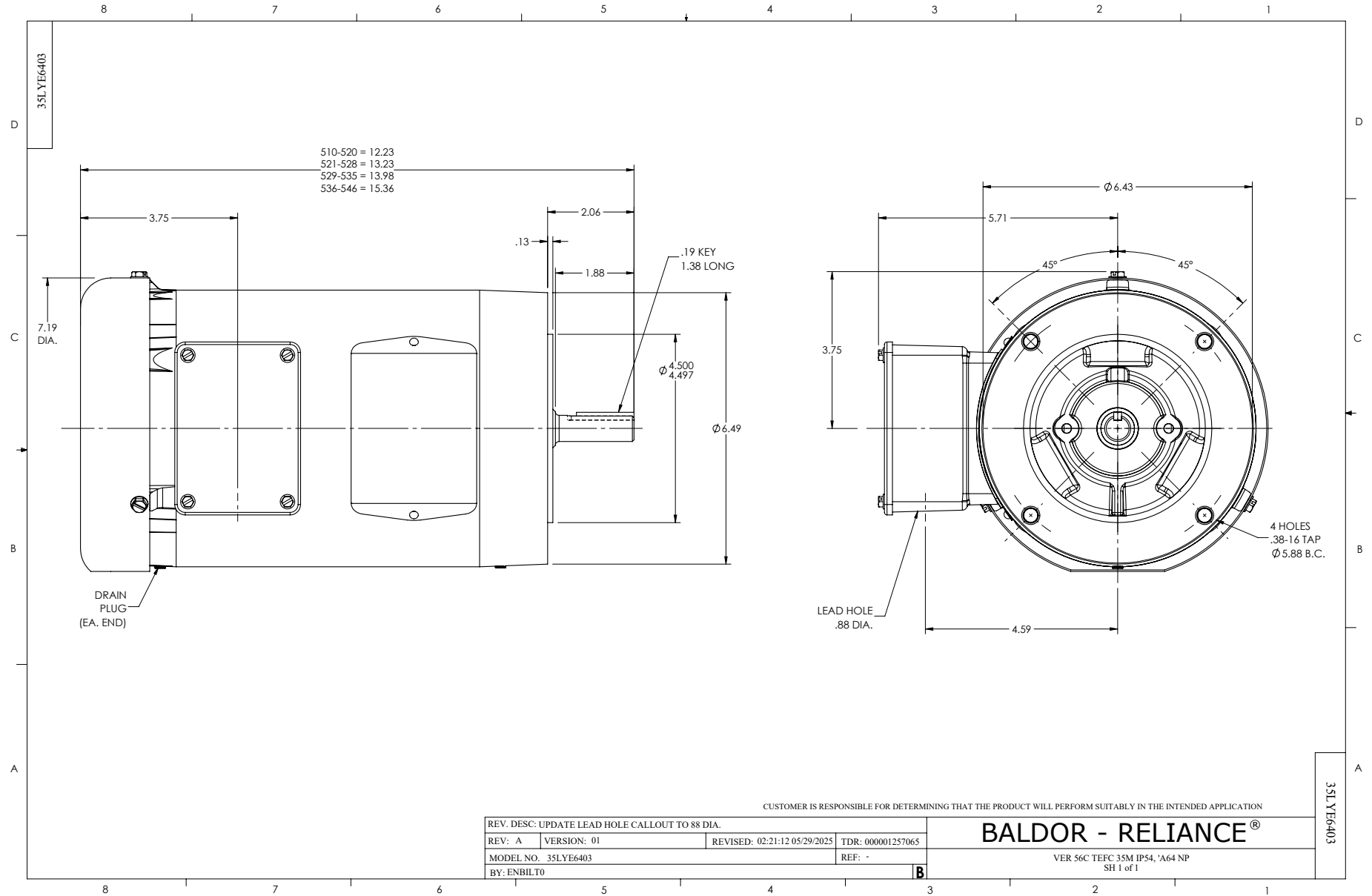
Typical performance - not guaranteed values.

1.5 HP 3 PH 60 HZ 3500 RPM 460 V 3520M

TORQUES (LB-FT): PO=12.5 PU=7.8 LR=11.1 LRA=22.6



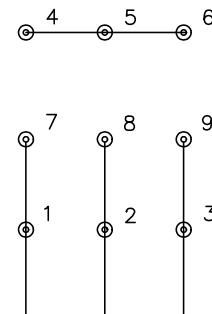
3/12/2026 ACPERF, record # 100785



CD0005

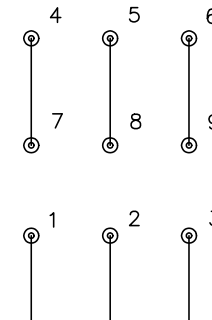


LOW VOLTAGE
(2Y)



LINE

HIGH VOLTAGE
(1Y)



LINE

NOTES:

1. INTERCHANGE ANY TWO LINE LEADS TO REVERSE ROTATION.
2. OPTIONAL THERMOSTATS ARE PROVIDED WHEN SPECIFIED.
3. ACTUAL NUMBER OF INTERNAL PARALLEL CIRCUITS MAY BE A MULTIPLE OF THOSE SHOWN ABOVE.
4. LEAD COLORS ARE OPTIONAL. LEADS MUST ALWAYS BE NUMBERED AS SHOWN.

REV. DESC: REVISE TO SHOW OPTIONAL COLORS			
REV. LTR: E	BY: JLP	REVISED: 01/19/99 10:15	TDR: 0171435
S00000		FILE: AAA00005140	MDL: -
		MTL: -	

BALDOR ELECTRIC Co.

3PH, DV, 9 LEADS

CD0005