

ABB BALDOR RELIANCE III

Customer information packet

VSPM3219T

7.5HP, 3500RPM, 3PH, 60HZ, 184TC, 3646M, OPSB

Class - None

Division - Not Applicable

Specifications

Enclosure	OPSB
Frame	184TC
Frame Material	Steel
Frequency	60.00 Hz
Haz Area Class and Group	None
Haz Area Division	Not Applicable
Motor Letter Type	Three Phase
Output @ Frequency	7.500 HP @ 60 HZ
Phase	3
Synchronous Speed @ Frequency	3600 RPM @ 60 HZ
Voltage @ Frequency	230.0 V @ 60 HZ 460.0 V @ 60 HZ
Agency Approvals	WEEE NEMA PREMIUM 4
Ambient Temperature	40 °C
Auxiliary Box	NO AUXILLARY BOX
Auxiliary Box Lead Termination	None
Base Indicator	No Mounting
Bearing Grease Type	Polyrex EM (-20F +300F)
Blower	None
Current @ Voltage	16.800 A @ 230.0 V 8.400 A @ 460.0 V
Design Code	B
Drip Cover	No Drip Cover
Duty Rating	CONT
Efficiency @ 100% Load	90.2 %
Electrically Isolated Bearing	Not Electrically Isolated
Feedback Device	NO FEEDBACK
Front Shaft Indicator	None
Heater Indicator	No Heater
High Voltage Full Load Amps	8.4 a
Insulation Class	F

Part Detail

Revision	B
Type	AC
Mech. spec.	36P426
Base	
Status	PRD/A
Elec. spec.	36WGX419
Layout	36LYP426
Eff. date	11-19-2025
CD Diagram	CD0005
Poles	02
Leads	9#16
Proprietary	False
Created date	01-02-2024

Inverter Code	Inverter Duty
KVA Code	K
Lifting Lugs	Standard Lifting Lugs
Locked Bearing Indicator	Locked Bearing
Max Speed	5400 rpm
Motor Lead Quantity/Wire Size	9 @ 16 AWG
Motor Lead Termination	Flying Leads
Motor Standards	NEMA
Motor Type	3646M
Mounting Arrangement	F1
Number of Poles	2
Overall Length	16.50 IN
Power Factor	91
Product Family	General Purpose
Pulley End Bearing Type	Ball
Pulley Face Code	C-Face
Pulley Shaft Indicator	Standard
Rodent Screen	None
RoHS Status	ROHS COMPLIANT
Service Factor	1.15
Shaft Diameter	1.125 IN
Shaft Ground Indicator	No Shaft Grounding
Shaft Rotation	Reversible
Shaft Slinger Indicator	No Slinger
Speed	3500 rpm
Speed Code	Single Speed
Starting Method	Direct on line
Thermal Device - Bearing	None
Thermal Device - Winding	None
Vibration Sensor Indicator	No Vibration Sensor
Winding Thermal 1	None
Winding Thermal 2	None

Nameplate

NP4423A01A01L

CAT #	VSPM3219T	WGT	96	LBS	
SPEC	36P426X419	ENCL	OPSB		
SER #		CC	010A	IP	23
HP	7.5	MAG CUR	4.4/2.2		
VOLTS	230/460	NEMA NOM. EFF	90.2		
AMPS	16.8/8.4	PF	91		
RATING	40C AMB-CONT				
RPM	3500	MAX RPM	5400		
FRAME	184TC	HZ	60	CODE	K
		CLASS	F		
SER.F.	1.15	SF AMP	19/9.5	PH	3
		DES	B		
DE	6206	ODE	6205		
LUBRICATION	POLYREX EM				
ID LOGO	INVERTER TYPE	VPWM	CHP	60	TO
				90	1.5:1
ID LOGO	WK2	0.207	CT	6	TO
				60	10:1
ID LOGO	SL HZ	1.7	VT	3	TO
				60	20:1
YR		QR			

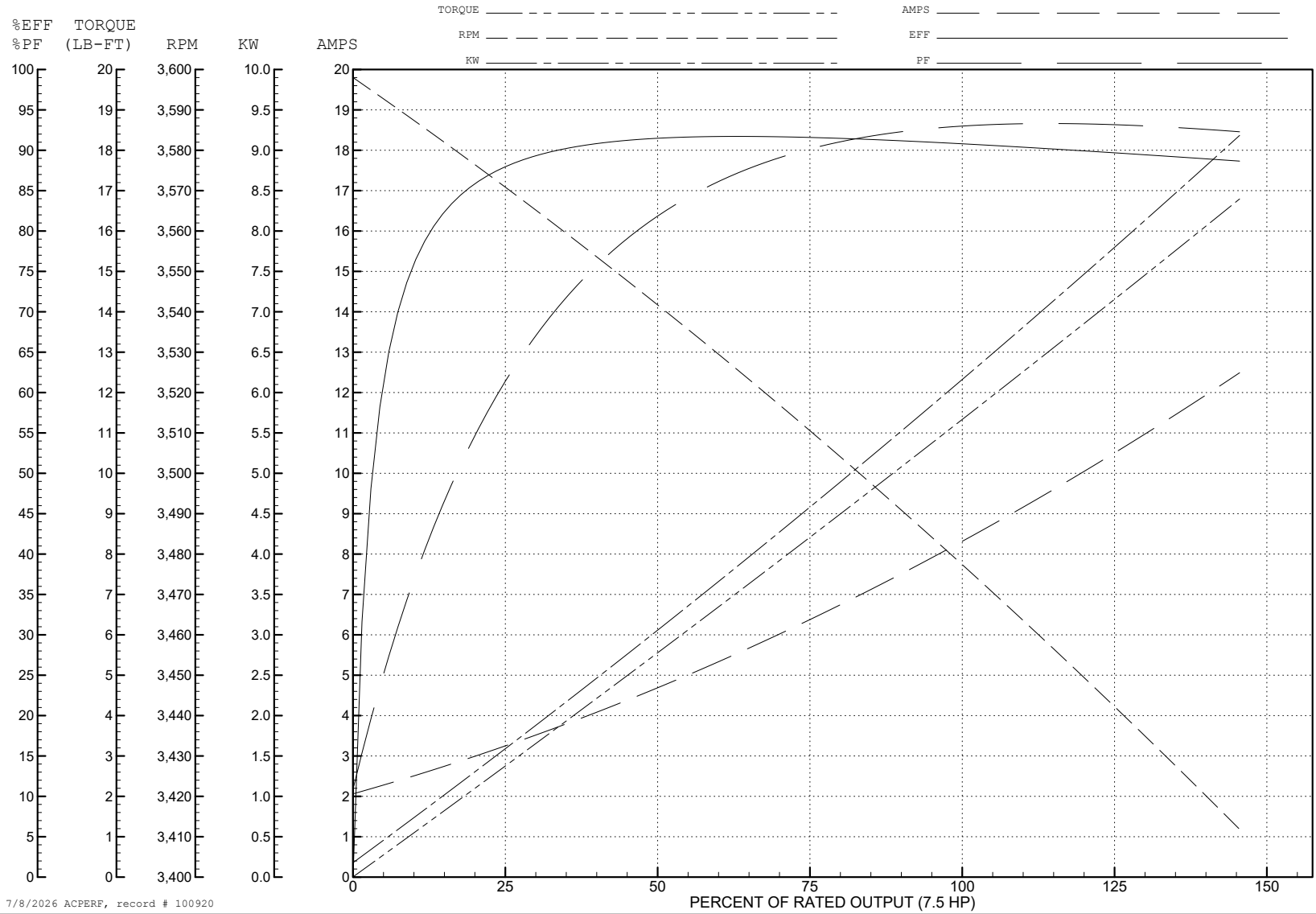
ABB Motors and Mechanical Inc.

WINDING # 36WGx419

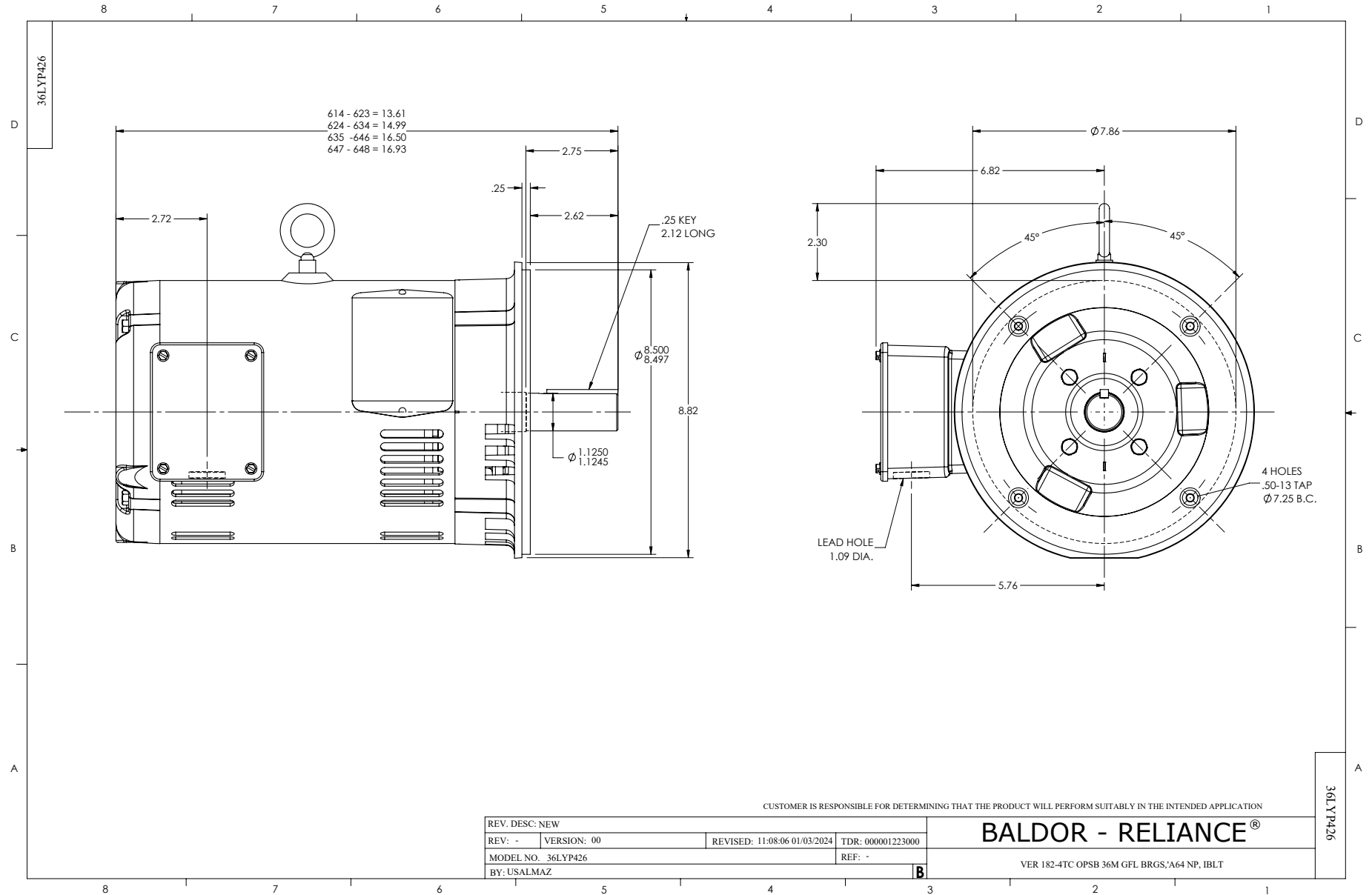
Typical performance - not guaranteed values.

7.5 HP 3 PH 60 HZ 3500 RPM 460 V 3646M

TORQUES (LB-FT): PO=55 PU=40 LR=48 LRA=87



7/8/2026 ACPERF, record # 100920



CD0005



LOW VOLTAGE
(2Y)



LINE

HIGH VOLTAGE
(1Y)



LINE

NOTES:

1. INTERCHANGE ANY TWO LINE LEADS TO REVERSE ROTATION.
2. OPTIONAL THERMOSTATS ARE PROVIDED WHEN SPECIFIED.
3. ACTUAL NUMBER OF INTERNAL PARALLEL CIRCUITS MAY BE A MULTIPLE OF THOSE SHOWN ABOVE.
4. LEAD COLORS ARE OPTIONAL. LEADS MUST ALWAYS BE NUMBERED AS SHOWN.

CD0005

REV. DESC: REVISE TO SHOW OPTIONAL COLORS

REV. LTR: E BY: JLP REVISED: 01/19/99 10:15 TDR: 0171435

500000

FILE: AAA00005140

MDL: -

MTL: -

BALDOR ELECTRIC Co.

3PH, DV, 9 LEADS