

ABB BALDOR RELIANCE III

Customer information packet

VSPM3212T

5HP, 3490RPM, 3PH, 60HZ, 182TC, 3634M, OPSB, F1

Class - None

Division - Not Applicable

Specifications

Enclosure	OPSB
Frame	182TC
Frame Material	Steel
Frequency	60.00 Hz
Haz Area Class and Group	None
Haz Area Division	Not Applicable
Motor Letter Type	Three Phase
Output @ Frequency	5.000 HP @ 60 HZ
Phase	3
Synchronous Speed @ Frequency	3600 RPM @ 60 HZ
Voltage @ Frequency	230.0 V @ 60 HZ 460.0 V @ 60 HZ
Agency Approvals	NEMA PREMIUM 4 WEEE
Ambient Temperature	40 °C
Auxiliary Box	NO AUXILLARY BOX
Auxiliary Box Lead Termination	None
Base Indicator	No Mounting
Bearing Grease Type	Polyrex EM (-20F +300F)
Blower	None
Current @ Voltage	11.200 A @ 230.0 V 12.200 A @ 208.0 V 5.600 A @ 460.0 V
Design Code	A
Drip Cover	No Drip Cover
Duty Rating	CONT
Efficiency @ 100% Load	91.0 %
Electrically Isolated Bearing	Not Electrically Isolated
Feedback Device	NO FEEDBACK
Front Shaft Indicator	None
Heater Indicator	No Heater
High Voltage Full Load Amps	5.6 a

Part Detail

Revision	C
Type	AC
Mech. spec.	36P426
Base	
Status	PRD/A
Elec. spec.	36WGT826
Layout	36LYP426
Eff. date	03-19-2026
CD Diagram	CD0005
Poles	02
Leads	9#16
Proprietary	False
Created date	01-02-2024

Insulation Class	F
Inverter Code	Inverter Duty
KVA Code	L
Lifting Lugs	Standard Lifting Lugs
Locked Bearing Indicator	Locked Bearing
Max Speed	5400 rpm
Motor Lead Quantity/Wire Size	9 @ 16 AWG
Motor Lead Termination	Flying Leads
Motor Standards	NEMA
Motor Type	3634M
Mounting Arrangement	F1
Number of Poles	2
Overall Length	14.99 IN
Power Factor	93
Product Family	General Purpose
Pulley End Bearing Type	Ball
Pulley Face Code	C-Face
Pulley Shaft Indicator	Standard
Rodent Screen	None
RoHS Status	ROHS COMPLIANT
Service Factor	1.15
Shaft Diameter	1.125 IN
Shaft Ground Indicator	No Shaft Grounding
Shaft Rotation	Reversible
Shaft Slinger Indicator	No Slinger
Speed	3490 rpm
Speed Code	Single Speed
Starting Method	Direct on line
Thermal Device - Bearing	None
Thermal Device - Winding	None
Vibration Sensor Indicator	No Vibration Sensor
Winding Thermal 1	None
Winding Thermal 2	None

Nameplate

NP4423A01A01L											
CAT #	VSPM3212T				WGT	81	LBS				
SPEC	36P426T826				ENCL	OPSB					
SER #					CC	010A	IP	23			
HP	5	MAG CUR		11.2/5.6							
VOLTS	230/460				NEMA NOM. EFF					91	
AMPS	11.2/5.6				PF	93					
RATING	40C AMB-CONT										
RPM	3490				MAX RPM	5400					
FRAME	182TC	HZ	60	CODE	L	CLASS	F				
SER.F.	1.15	SF AMP				PH	3	DES	A		
DE	6206	ODE	6205								
LUBRICATION	POLYREX EM										
ID LOGO	INVERTER TYPE		VPWM	CHP	60	TO	90	1.5:1			
ID LOGO	WK2	0.15	CT	6	TO	60	10:1				
ID LOGO	SL HZ	1.8	VT	3	TO	60	20:1				
YR					QR						

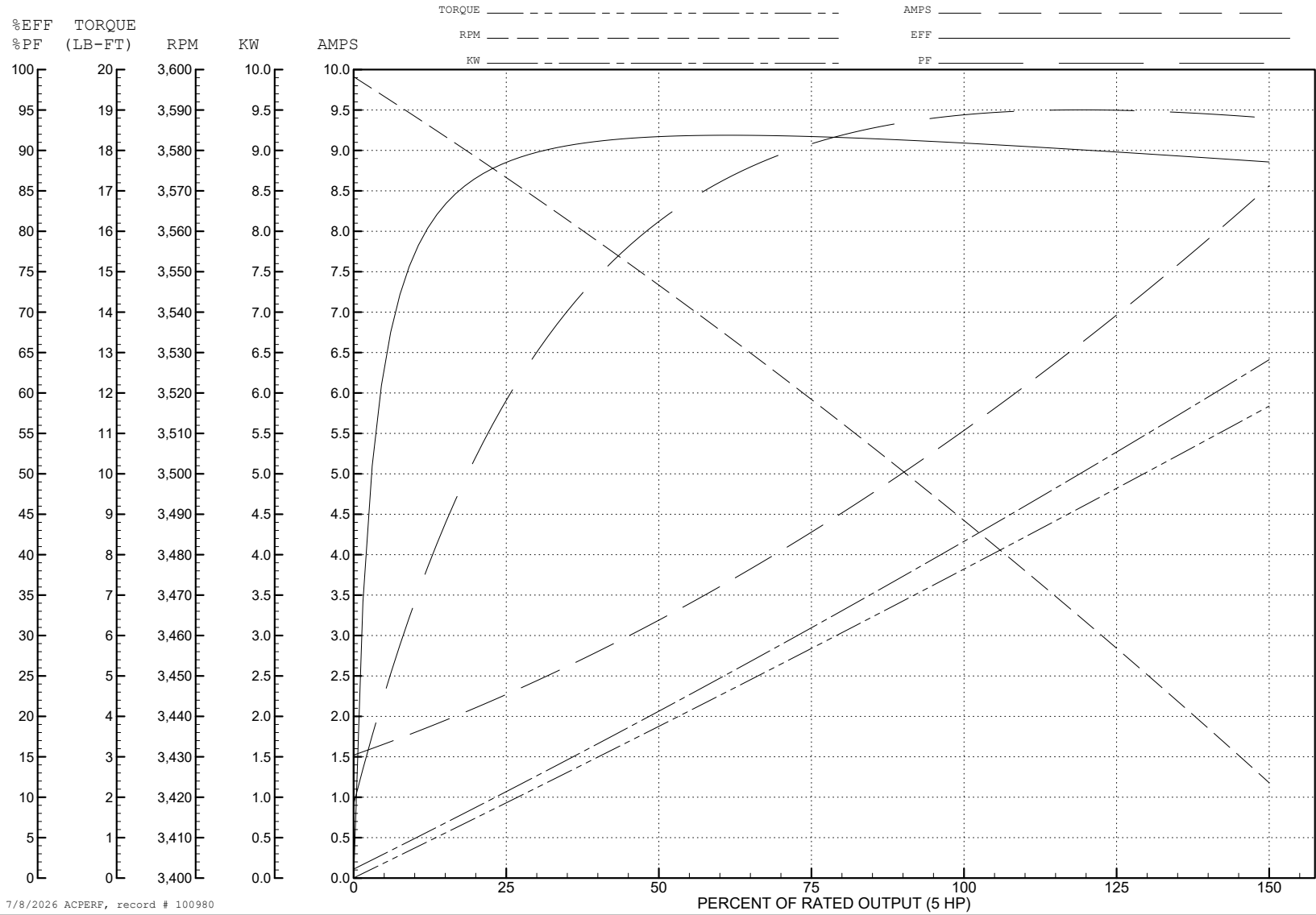
ABB Motors and Mechanical Inc.

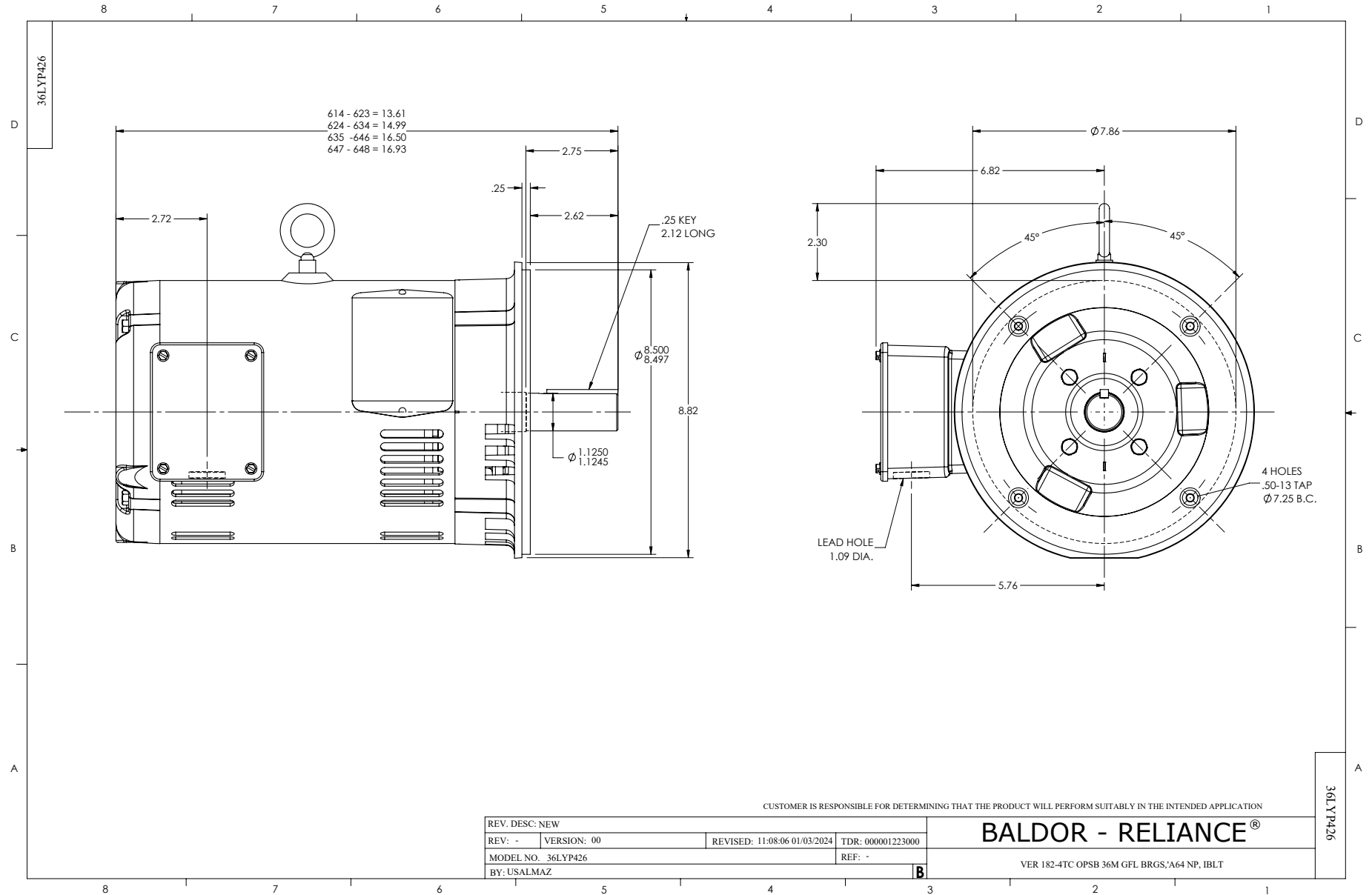
WINDING # 36WGT826

Typical performance - not guaranteed values.

5 HP 3 PH 60 HZ 3490 RPM 460 V 3634M

TORQUES (LB-FT): PO=41.6 PU=26 LR=30.5 LRA=59.9





CD0005



LOW VOLTAGE
(2Y)



LINE

HIGH VOLTAGE
(1Y)



LINE

NOTES:

1. INTERCHANGE ANY TWO LINE LEADS TO REVERSE ROTATION.
2. OPTIONAL THERMOSTATS ARE PROVIDED WHEN SPECIFIED.
3. ACTUAL NUMBER OF INTERNAL PARALLEL CIRCUITS MAY BE A MULTIPLE OF THOSE SHOWN ABOVE.
4. LEAD COLORS ARE OPTIONAL. LEADS MUST ALWAYS BE NUMBERED AS SHOWN.

CD0005

REV. DESC: REVISE TO SHOW OPTIONAL COLORS

REV. LTR: E BY: JLP REVISED: 01/19/99 10:15 TDR: 0171435

900000

FILE: AAA00005140

MDL: -

MTL: -

BALDOR ELECTRIC Co.

3PH, DV, 9 LEADS