

# **ABB BALDOR RELIANCE III**

---

## **Customer information packet**

### VSPM3156T

1HP, 1170RPM, 3PH, 60HZ, 145TC, 3532M, OPSB, F1

Class - None

Division - Not Applicable

**Specifications**

<b>Enclosure</b>	OPSB
<b>Frame</b>	145TC
<b>Frame Material</b>	Steel
<b>Frequency</b>	60.00 Hz
<b>Haz Area Class and Group</b>	None
<b>Haz Area Division</b>	Not Applicable
<b>Motor Letter Type</b>	Three Phase
<b>Output @ Frequency</b>	1.000 HP @ 60 HZ
<b>Phase</b>	3
<b>Synchronous Speed @ Frequency</b>	1200 RPM @ 60 HZ
<b>Voltage @ Frequency</b>	230.0 V @ 60 HZ 460.0 V @ 60 HZ
<b>Agency Approvals</b>	NEMA PREMIUM 4 WEEE
<b>Ambient Temperature</b>	40 °C
<b>Auxiliary Box</b>	NO AUXILLARY BOX
<b>Auxiliary Box Lead Termination</b>	None
<b>Base Indicator</b>	No Mounting
<b>Bearing Grease Type</b>	Polyrex EM (-20F +300F)
<b>Blower</b>	None
<b>Current @ Voltage</b>	1.660 A @ 460.0 V 3.320 A @ 230.0 V 3.500 A @ 208.0 V
<b>Design Code</b>	B
<b>Drip Cover</b>	No Drip Cover
<b>Duty Rating</b>	CONT
<b>Efficiency @ 100% Load</b>	84.0 %
<b>Electrically Isolated Bearing</b>	Not Electrically Isolated
<b>Feedback Device</b>	NO FEEDBACK
<b>Front Shaft Indicator</b>	None
<b>Heater Indicator</b>	No Heater
<b>High Voltage Full Load Amps</b>	1.7 a

**Part Detail**

<b>Revision</b>	B
<b>Type</b>	AC
<b>Mech. spec.</b>	35E6388
<b>Base</b>	
<b>Status</b>	PRD/A
<b>Elec. spec.</b>	35WGG824
<b>Layout</b>	35LYE6388
<b>Eff. date</b>	11-19-2025
<b>CD Diagram</b>	CD0005
<b>Poles</b>	06
<b>Leads</b>	9#18
<b>Proprietary</b>	False
<b>Created date</b>	01-05-2024

<b>Insulation Class</b>	F
<b>Inverter Code</b>	Inverter Duty
<b>KVA Code</b>	J
<b>Lifting Lugs</b>	No Lifting Lugs
<b>Locked Bearing Indicator</b>	Locked Bearing
<b>Max Speed</b>	1800 rpm
<b>Motor Lead Quantity/Wire Size</b>	9 @ 18 AWG
<b>Motor Lead Termination</b>	Flying Leads
<b>Motor Standards</b>	NEMA
<b>Motor Type</b>	3532M
<b>Mounting Arrangement</b>	F1
<b>Number of Poles</b>	6
<b>Overall Length</b>	13.00 IN
<b>Power Factor</b>	67
<b>Product Family</b>	General Purpose
<b>Pulley End Bearing Type</b>	Ball
<b>Pulley Face Code</b>	C-Face
<b>Pulley Shaft Indicator</b>	Standard
<b>Rodent Screen</b>	None
<b>RoHS Status</b>	ROHS COMPLIANT
<b>Service Factor</b>	1.15
<b>Shaft Diameter</b>	0.875 IN
<b>Shaft Ground Indicator</b>	No Shaft Grounding
<b>Shaft Rotation</b>	Reversible
<b>Shaft Slinger Indicator</b>	No Slinger
<b>Speed</b>	1170 rpm
<b>Speed Code</b>	Single Speed
<b>Starting Method</b>	Direct on line
<b>Thermal Device - Bearing</b>	None
<b>Thermal Device - Winding</b>	None
<b>Vibration Sensor Indicator</b>	No Vibration Sensor
<b>Winding Thermal 1</b>	None
<b>Winding Thermal 2</b>	None

**Nameplate**

<b>NP4423A01A01L</b>											
<b>CAT #</b>	VSPM3156T			<b>WGT</b>	47	<b>LBS</b>					
<b>SPEC</b>	35E6388G824			<b>ENCL</b>	OPSB						
<b>SER #</b>				<b>CC</b>	010A	<b>IP</b>	23				
<b>HP</b>	1	<b>MAG CUR</b>		2.06/1.03							
<b>VOLTS</b>	230/460			<b>NEMA NOM. EFF</b>			84				
<b>AMPS</b>	3.32/1.66			<b>PF</b>	67						
<b>RATING</b>	40C AMB-CONT										
<b>RPM</b>	1170			<b>MAX RPM</b>		1800					
<b>FRAME</b>	145TC	<b>HZ</b>	60	<b>CODE</b>	J	<b>CLASS</b>	F				
<b>SER.F.</b>	1.15	<b>SF AMP</b>	3.68/1.84		<b>PH</b>	3	<b>DES</b>	B			
<b>DE</b>	6205		<b>ODE</b>		6203						
<b>LUBRICATION</b>	POLYREX EM										
<b>ID LOGO</b>	<b>INVERTER TYPE</b>		<b>VPWM</b>		<b>CHP</b>	60	<b>TO</b>	90	1.5:1		
<b>ID LOGO</b>	<b>WK2</b>	0.232	<b>CT</b>	6	<b>TO</b>	60	10:1				
<b>ID LOGO</b>	<b>SL HZ</b>	1.57	<b>VT</b>	3	<b>TO</b>	60	20:1				
<b>YR</b>				<b>QR</b>							

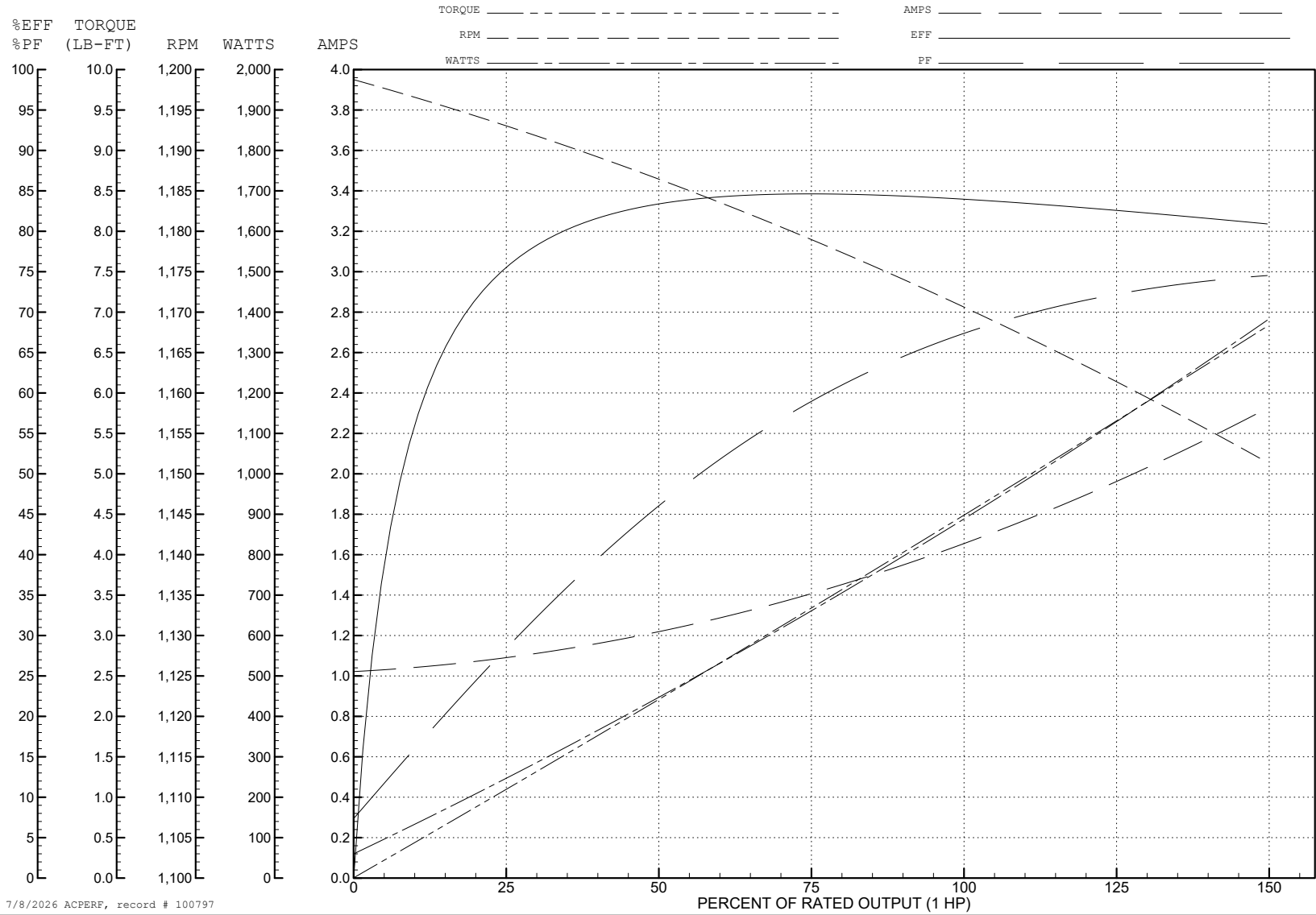
ABB Motors and Mechanical Inc.

WINDING # 35WGG824

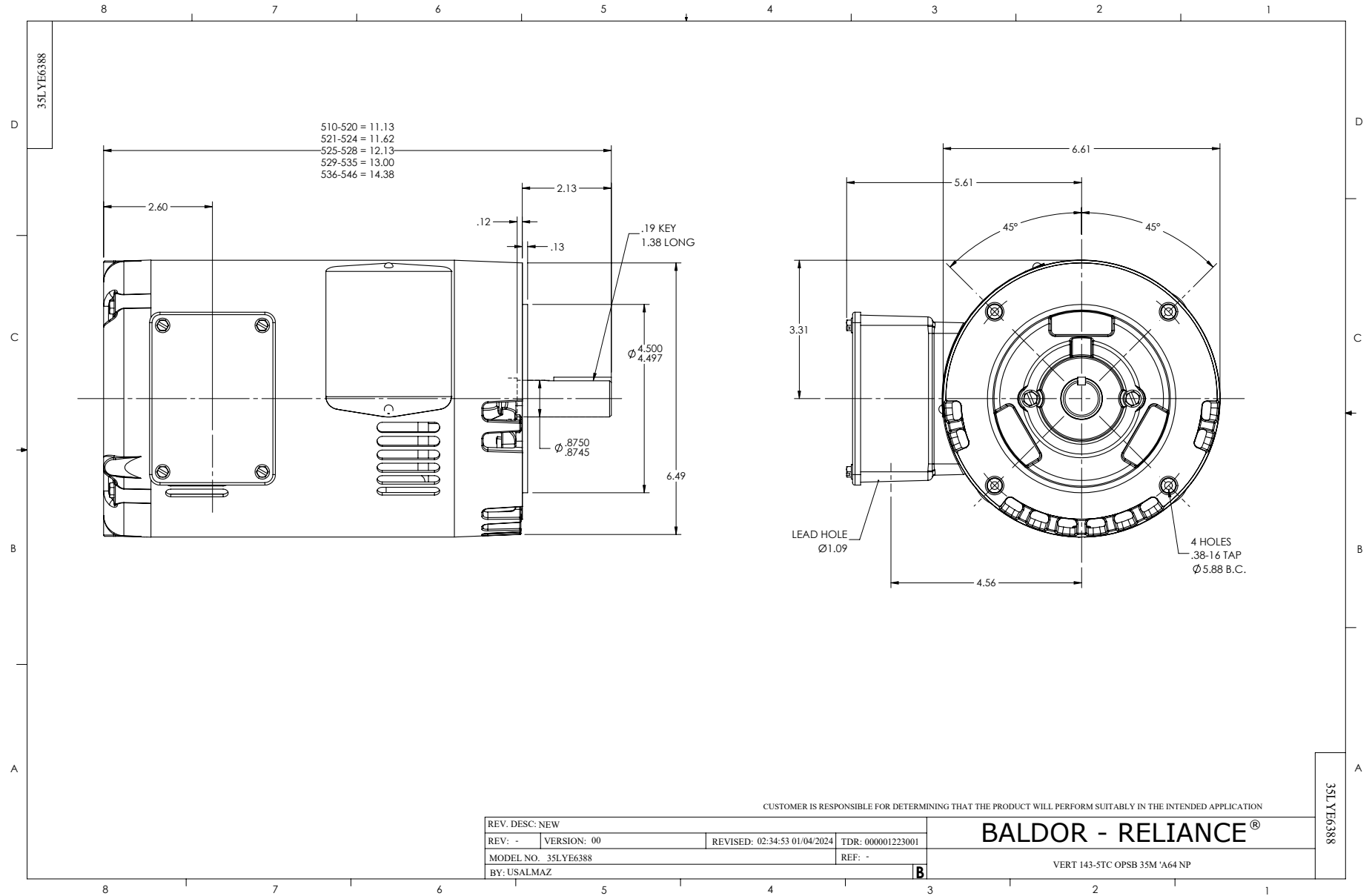
Typical performance - not guaranteed values.

1 HP 3 PH 60 HZ 1170 RPM 460 V 3532M

TORQUES (LB-FT): PO=12.7 PU=7.4 LR=9 LRA=9.5



7/8/2026 ACPERF, record # 100797



CD0005



LOW VOLTAGE  
(2Y)



LINE

HIGH VOLTAGE  
(1Y)



LINE

NOTES:

1. INTERCHANGE ANY TWO LINE LEADS TO REVERSE ROTATION.
2. OPTIONAL THERMOSTATS ARE PROVIDED WHEN SPECIFIED.
3. ACTUAL NUMBER OF INTERNAL PARALLEL CIRCUITS MAY BE A MULTIPLE OF THOSE SHOWN ABOVE.
4. LEAD COLORS ARE OPTIONAL. LEADS MUST ALWAYS BE NUMBERED AS SHOWN.

CD0005

REV. DESC: REVISE TO SHOW OPTIONAL COLORS

REV. LTR: E BY: JLP REVISED: 01/19/99 10:15 TDR: 0171435

500000

FILE: AAA00005140

MDL: -

MTL: -

**BALDOR ELECTRIC Co.**

3PH, DV, 9 LEADS