

**BALDOR • RELIANCE**

---

# Customer information packet

## VSPM31104

.333HP, 1740RPM, 3PH, 60HZ, 56C, 3416M, ODP, F1

Class - None

Division - Not Applicable

## Specifications

Enclosure	ODP
Frame	56C
Frame Material	Steel
Frequency	60.00 Hz
Haz Area Class and Group	None
Haz Area Division	Not Applicable
Motor Letter Type	Three Phase
Output @ Frequency	.333 HP @ 60 HZ
Phase	3
Synchronous Speed @ Frequency	1800 RPM @ 60 HZ
Voltage @ Frequency	230.0 V @ 60 HZ 460.0 V @ 60 HZ
Agency Approvals	WEEE CURUS
Ambient Temperature	40 °C
Auxillary Box	No Auxillary Box
Auxillary Box Lead Termination	None
Base Indicator	No Mounting
Bearing Grease Type	Polyrex EM (-20F +300F)
Blower	None
Current @ Voltage	.520 A @ 460.0 V 1.040 A @ 230.0 V
Design Code	B
Drip Cover	No Drip Cover
Duty Rating	CONT
Efficiency @ 100% Load	77.0 %
Electrically Isolated Bearing	Not Electrically Isolated
Feedback Device	NO FEEDBACK
Front Shaft Indicator	None
Heater Indicator	No Heater
High Voltage Full Load Amps	0.5 a
Insulation Class	F

## Part detail

Revision	D
Type	AC
Mech. spec.	34B063
Base	
Status	PRD/A
Elec. spec.	34WGR772
Layout	34LYB063
Eff. date	03-10-2025
CD Diagram	CD0005
Poles	04
Leads	9#18
Proprietary	False
Created date	03-06-2024

<b>Inverter Code</b>	Not Inverter
<b>KVA Code</b>	L
<b>Lifting Lugs</b>	No Lifting Lugs
<b>Locked Bearing Indicator</b>	Locked Bearing
<b>Motor Lead Quantity/Wire Size</b>	9 @ 18 AWG
<b>Motor Lead Termination</b>	Flying Leads
<b>Motor Standards</b>	NEMA
<b>Motor Type</b>	3416M
<b>Mounting Arrangement</b>	F1
<b>Number of Poles</b>	4
<b>Overall Length</b>	10.26 IN
<b>Power Factor</b>	75
<b>Product Family</b>	General Purpose
<b>Pulley End Bearing Type</b>	Ball
<b>Pulley Face Code</b>	C-Face
<b>Pulley Shaft Indicator</b>	Standard
<b>Rodent Screen</b>	None
<b>RoHS Status</b>	ROHS COMPLIANT
<b>Service Factor</b>	1.35
<b>Shaft Diameter</b>	0.625 IN
<b>Shaft Ground Indicator</b>	No Shaft Grounding
<b>Shaft Rotation</b>	Reversible
<b>Shaft Slinger Indicator</b>	No Slinger
<b>Speed</b>	1740 rpm
<b>Speed Code</b>	Single Speed
<b>Starting Method</b>	Direct on line
<b>Thermal Device - Bearing</b>	None
<b>Thermal Device - Winding</b>	None
<b>Vibration Sensor Indicator</b>	No Vibration Sensor
<b>Winding Thermal 1</b>	None
<b>Winding Thermal 2</b>	None

Nameplate

NP4558A02LL										
<b>CAT #</b>	VSPM31104			<b>WGT</b>	24	<b>LBS</b>				
<b>SER #</b>				<b>ENCL</b>	ODP					
<b>SPEC</b>	34B063R772			<b>CC</b>	010A	<b>IP</b>	23			
<b>HP</b>	.333			<b>NEMA NOM. EFF</b>			77			
<b>VOLTS</b>	230/460			<b>PF</b>	75					
<b>AMPS</b>	1.04/.52									
<b>RATING</b>	40C AMB-CONT									
<b>RPM</b>	1740			<b>PH</b>	3	<b>DES</b>	B			
<b>FRAME</b>	56C	<b>HZ</b>	60	<b>CODE</b>	L	<b>CLASS</b>	F			
<b>SER.F.</b>	1.35	<b>SF AMP</b>	1.3/.65							
<b>DE</b>	6203		<b>ODE</b>	6203						
<b>GREASE</b>	POLYREX EM									
<b>YR</b>										

**AC Induction Motor Performance Data**

Record # 100724

Preliminary Data Sheet

Winding: 34WGR772-R003		Type: 3416M	Enclosure: ODP	
<b>Nameplate Data</b>		<b>460 V, 60 Hz: High Voltage Connection</b>		
Rated Output (HP)	.333	Full Load Torque	1.01 LB-FT	
Volts	230/460	Start Configuration	direct on line	
Full Load Amps	1.04/.52	Breakdown Torque	4.1 LB-FT	
R.P.M.	1740	Pull-up Torque	2.3 LB-FT	
Hz	60 Phase	3	Locked-rotor Torque	3.1 LB-FT
NEMA Design Code	B KVA Code	L	Starting Current	3.8 A
Service Factor (S.F.)		1.35	No-load Current	0.41 A
NEMA Nom. Eff.	77 Power Factor	75	Line-line Res. @ 25°C	56.1 Ω
Rating - Duty		40C AMB-CONT	Temp. Rise @ Rated Load	24°C
S.F. Amps		1.3/.65	Temp. Rise @ S.F. Load	39°C
			Locked-rotor Power Factor	62.8
			Rotor inertia	0.0381 lb-ft <sup>2</sup>

**Load Characteristics 460 V, 60 Hz, 0.33 HP**

% of Rated Load	25	50	75	100	125	150	S.F.
Power Factor	31	48	62	71	78	82	80
Efficiency	61.3	72.9	76.7	78	77.7	76.3	77.1
Speed	1780	1765	1747	1728	1706	1681	1696
Line amperes	0.41	0.44	0.49	0.56	0.64	0.75	0.684

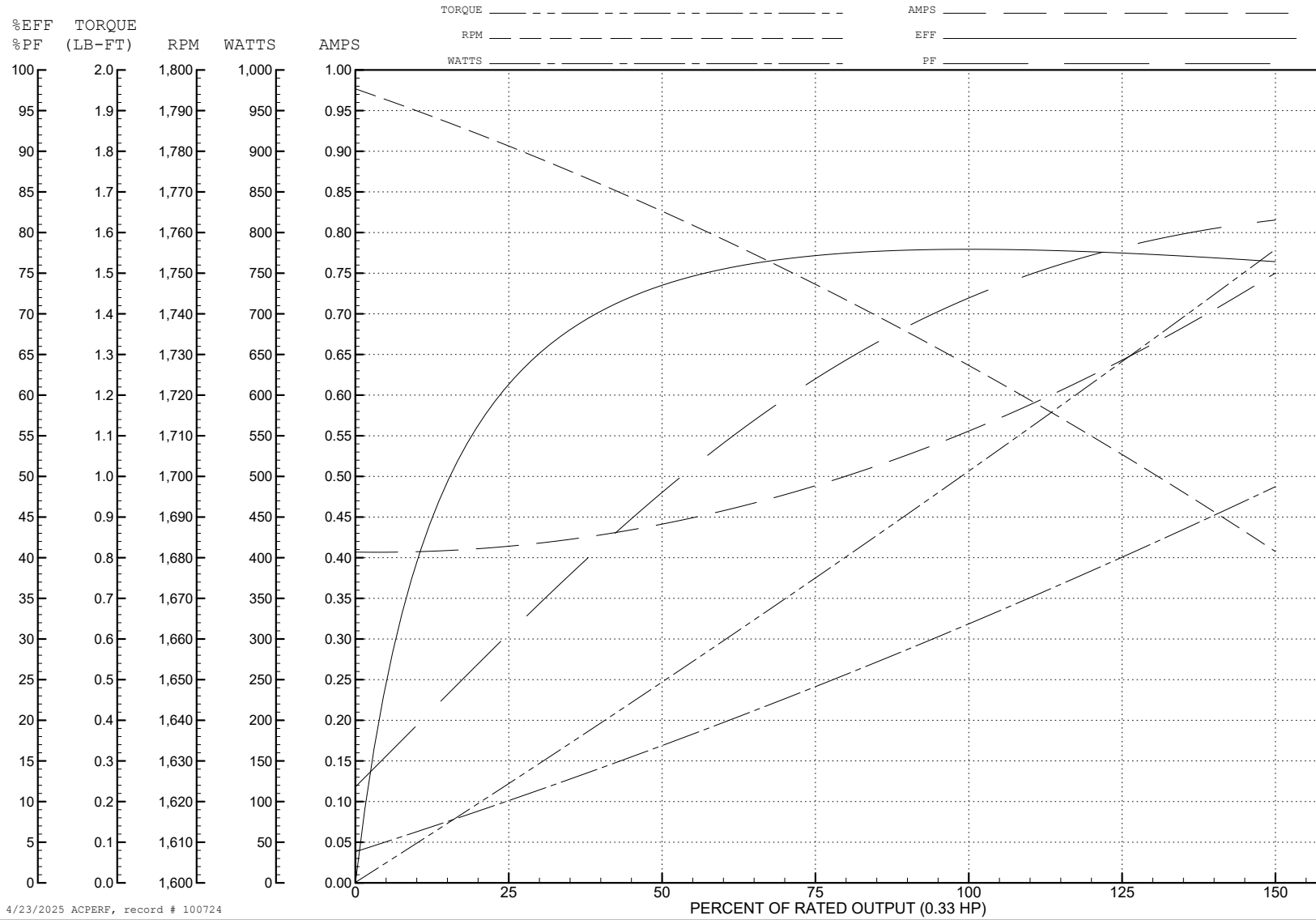
ABB Motors and Mechanical Inc.

WINDING # 34WGR772

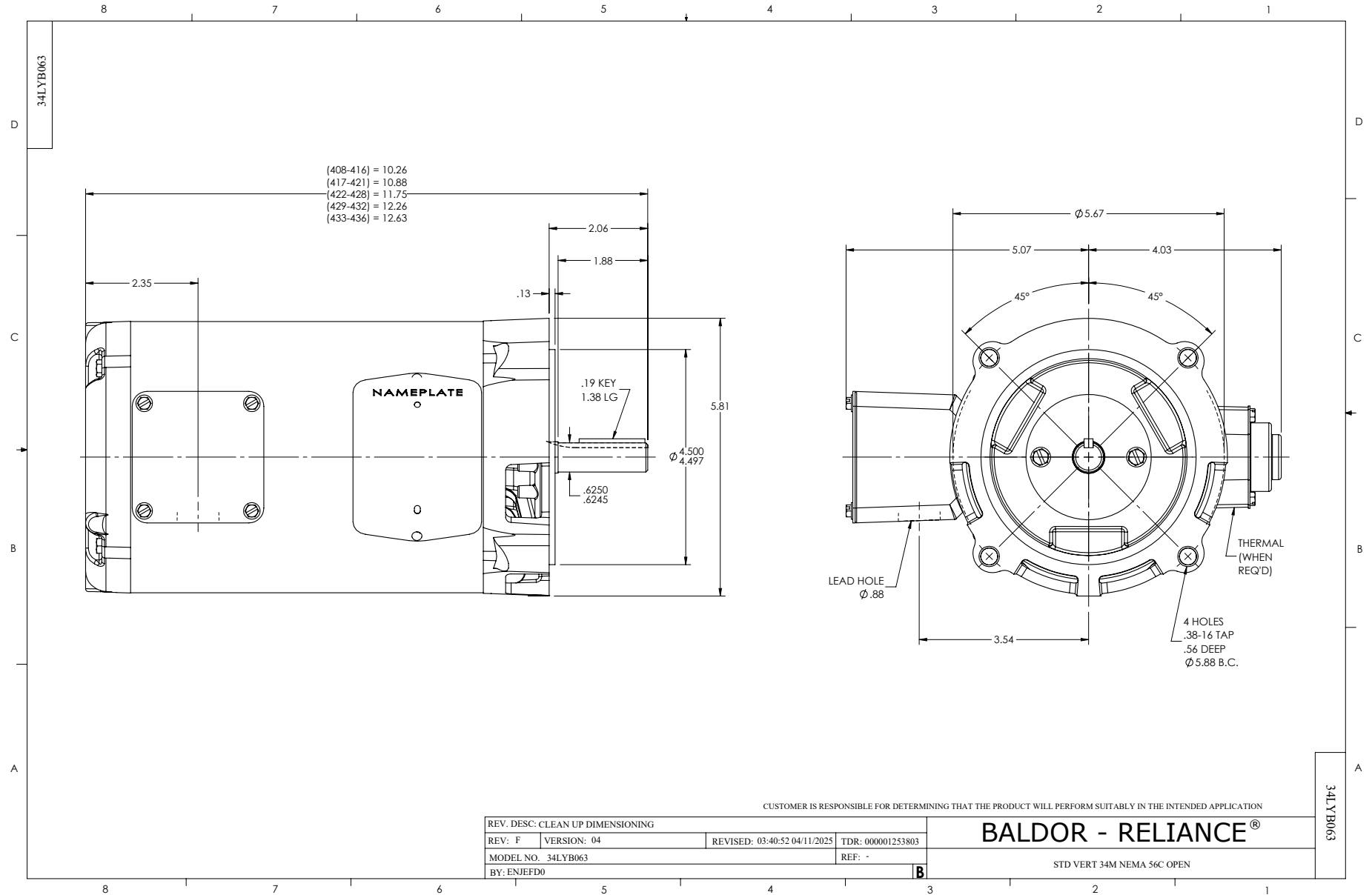
0.33 HP 3 PH 60 HZ 1740 RPM 460 V 3416M

Typical performance - not guaranteed values.

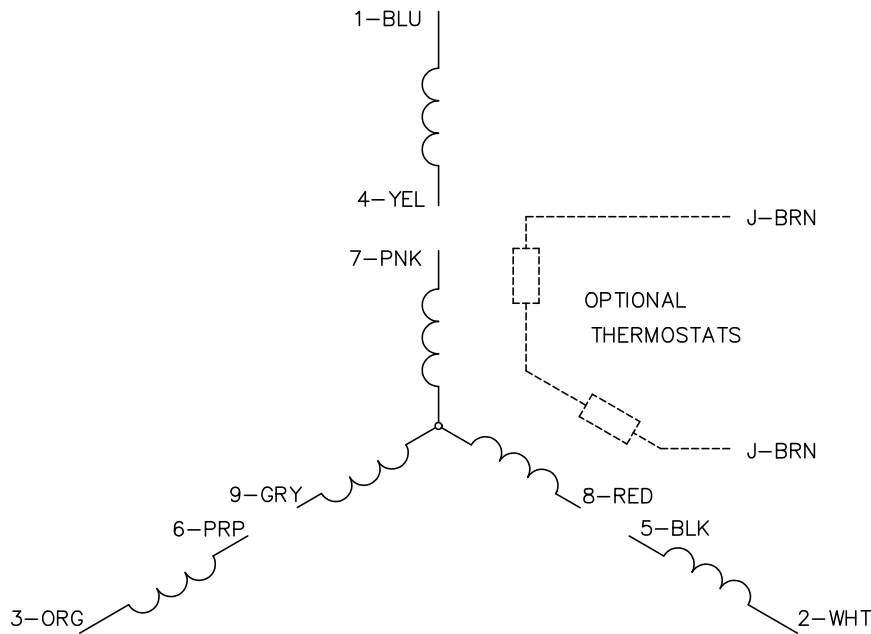
TORQUES (LB-FT) : PO=4.1 PU=2.3 LR=3.1 LRA=3.8



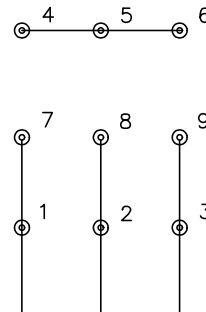
4/23/2025 ACPERF, record # 100724



CD0005

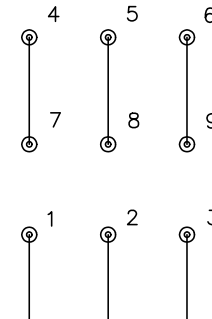


LOW VOLTAGE  
(2Y)



LINE

HIGH VOLTAGE  
(1Y)



LINE

NOTES:

1. INTERCHANGE ANY TWO LINE LEADS TO REVERSE ROTATION.
2. OPTIONAL THERMOSTATS ARE PROVIDED WHEN SPECIFIED.
3. ACTUAL NUMBER OF INTERNAL PARALLEL CIRCUITS MAY BE A MULTIPLE OF THOSE SHOWN ABOVE.
4. LEAD COLORS ARE OPTIONAL. LEADS MUST ALWAYS BE NUMBERED AS SHOWN.

CD0005

REV. DESC: REVISE TO SHOW OPTIONAL COLORS			
REV. LTR: E	BY: JLP	REVISED: 01/19/99 10:15	TDR: 0171435
S00000		FILE: AAA00005140	MDL: -
		MTL: -	

**BALDOR ELECTRIC Co.**

3PH, DV, 9 LEADS