

# **ABB BALDOR RELIANCE III**

---

## **Customer information packet**

VSPM2514T

20HP, 3525RPM, 3PH, 60HZ, 254TC, 3940M, OPSB, F

Class - None

Division - Not Applicable

**Specifications**

<b>Enclosure</b>	OPSB
<b>Frame</b>	254TC
<b>Frame Material</b>	Steel
<b>Frequency</b>	60.00 Hz
<b>Haz Area Class and Group</b>	None
<b>Haz Area Division</b>	Not Applicable
<b>Motor Letter Type</b>	Three Phase
<b>Output @ Frequency</b>	20.000 HP @ 60 HZ
<b>Phase</b>	3
<b>Synchronous Speed @ Frequency</b>	3600 RPM @ 60 HZ
<b>Voltage @ Frequency</b>	230.0 V @ 60 HZ 460.0 V @ 60 HZ
<b>Agency Approvals</b>	CURUSEEV NEMA PREMIUM 4 WEEE
<b>Ambient Temperature</b>	40 °C
<b>Auxiliary Box</b>	NO AUXILLARY BOX
<b>Auxiliary Box Lead Termination</b>	None
<b>Base Indicator</b>	No Mounting
<b>Bearing Grease Type</b>	Polyrex EM (-20F +300F)
<b>Blower</b>	None
<b>Current @ Voltage</b>	23.000 A @ 460.0 V 46.000 A @ 230.0 V
<b>Design Code</b>	A
<b>Drip Cover</b>	No Drip Cover
<b>Duty Rating</b>	CONT
<b>Efficiency @ 100% Load</b>	92.4 %
<b>Electrically Isolated Bearing</b>	Not Electrically Isolated
<b>Feedback Device</b>	NO FEEDBACK
<b>Front Shaft Indicator</b>	None
<b>Heater Indicator</b>	No Heater
<b>High Voltage Full Load Amps</b>	23.0 a

**Part Detail**

<b>Revision</b>	B
<b>Type</b>	AC
<b>Mech. spec.</b>	39E764
<b>Base</b>	
<b>Status</b>	PRD/A
<b>Elec. spec.</b>	39WGX341
<b>Layout</b>	39LYE764
<b>Eff. date</b>	12-12-2025
<b>CD Diagram</b>	CD0005
<b>Poles</b>	02
<b>Leads</b>	9#10
<b>Proprietary</b>	False
<b>Created date</b>	11-16-2023

<b>Insulation Class</b>	F
<b>Inverter Code</b>	Inverter Duty
<b>KVA Code</b>	J
<b>Lifting Lugs</b>	Standard Lifting Lugs
<b>Locked Bearing Indicator</b>	Locked Bearing
<b>Max Speed</b>	5400 rpm
<b>Motor Lead Quantity/Wire Size</b>	9 @ 10 AWG
<b>Motor Lead Termination</b>	Flying Leads
<b>Motor Standards</b>	NEMA
<b>Motor Type</b>	3940M
<b>Mounting Arrangement</b>	F1
<b>Number of Poles</b>	2
<b>Overall Length</b>	21.69 IN
<b>Power Factor</b>	89
<b>Product Family</b>	General Purpose
<b>Pulley End Bearing Type</b>	Ball
<b>Pulley Face Code</b>	C-Face
<b>Pulley Shaft Indicator</b>	Standard
<b>Rodent Screen</b>	None
<b>RoHS Status</b>	ROHS COMPLIANT
<b>Service Factor</b>	1.15
<b>Shaft Diameter</b>	1.625 IN
<b>Shaft Ground Indicator</b>	No Shaft Grounding
<b>Shaft Rotation</b>	Reversible
<b>Shaft Slinger Indicator</b>	No Slinger
<b>Speed</b>	3525 rpm
<b>Speed Code</b>	Single Speed
<b>Starting Method</b>	Direct on line
<b>Thermal Device - Bearing</b>	None
<b>Thermal Device - Winding</b>	None
<b>Vibration Sensor Indicator</b>	No Vibration Sensor
<b>Winding Thermal 1</b>	None
<b>Winding Thermal 2</b>	None

**Nameplate**

**NP4423A01A01L**

<b>CAT #</b>	VSPM2514T	<b>WGT</b>	242	<b>LBS</b>	
<b>SPEC</b>	39E764X341	<b>ENCL</b>	OPSB		
<b>SER #</b>		<b>CC</b>	010A	<b>IP</b>	23
<b>HP</b>	20	<b>MAG CUR</b>	16.4/8.2		
<b>VOLTS</b>	230/460	<b>NEMA NOM. EFF</b>	92.4		
<b>AMPS</b>	46/23	<b>PF</b>	89		
<b>RATING</b>	40C AMB-CONT				
<b>RPM</b>	3525	<b>MAX RPM</b>	5400		
<b>FRAME</b>	254TC	<b>HZ</b>	60	<b>CODE</b>	J
		<b>CLASS</b>	F		
<b>SER.F.</b>	1.15	<b>SF AMP</b>	52/26	<b>PH</b>	3
		<b>DES</b>	A		
<b>DE</b>	6309	<b>ODE</b>	6208		
<b>LUBRICATION</b>	POLYREX EM				
<b>ID LOGO</b>	<b>INVERTER TYPE</b>	<b>VPWM</b>	<b>CHP</b>	1.5	<b>TO</b>
				1	1.5:1
<b>ID LOGO</b>	<b>WK2</b>	1.02	<b>CT</b>	10	<b>TO</b>
				1	10:1
<b>ID LOGO</b>	<b>SL HZ</b>	1.25	<b>VT</b>	20	<b>TO</b>
				1	20:1
<b>YR</b>		<b>QR</b>			

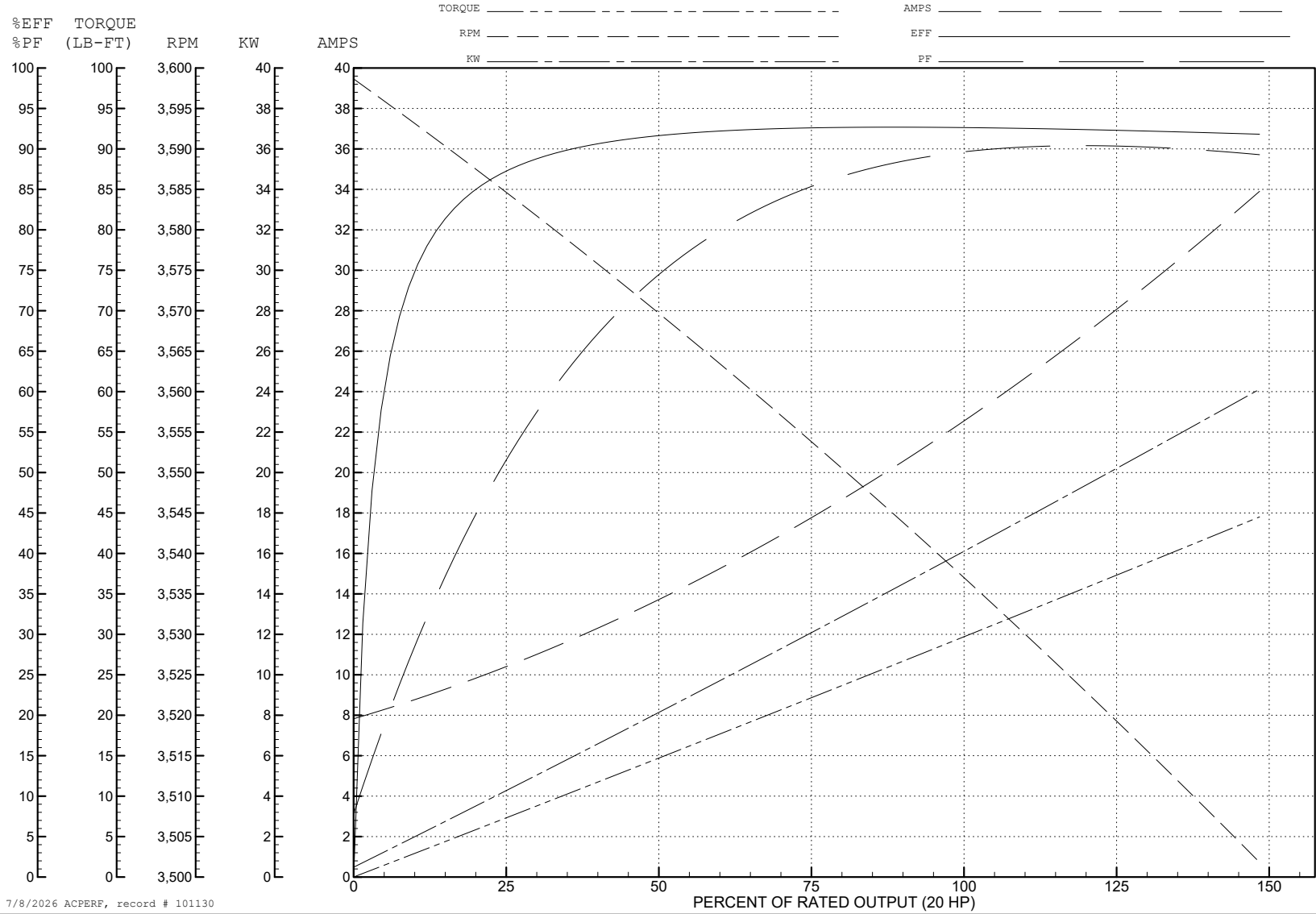
ABB Motors and Mechanical Inc.

WINDING # 39WGX341

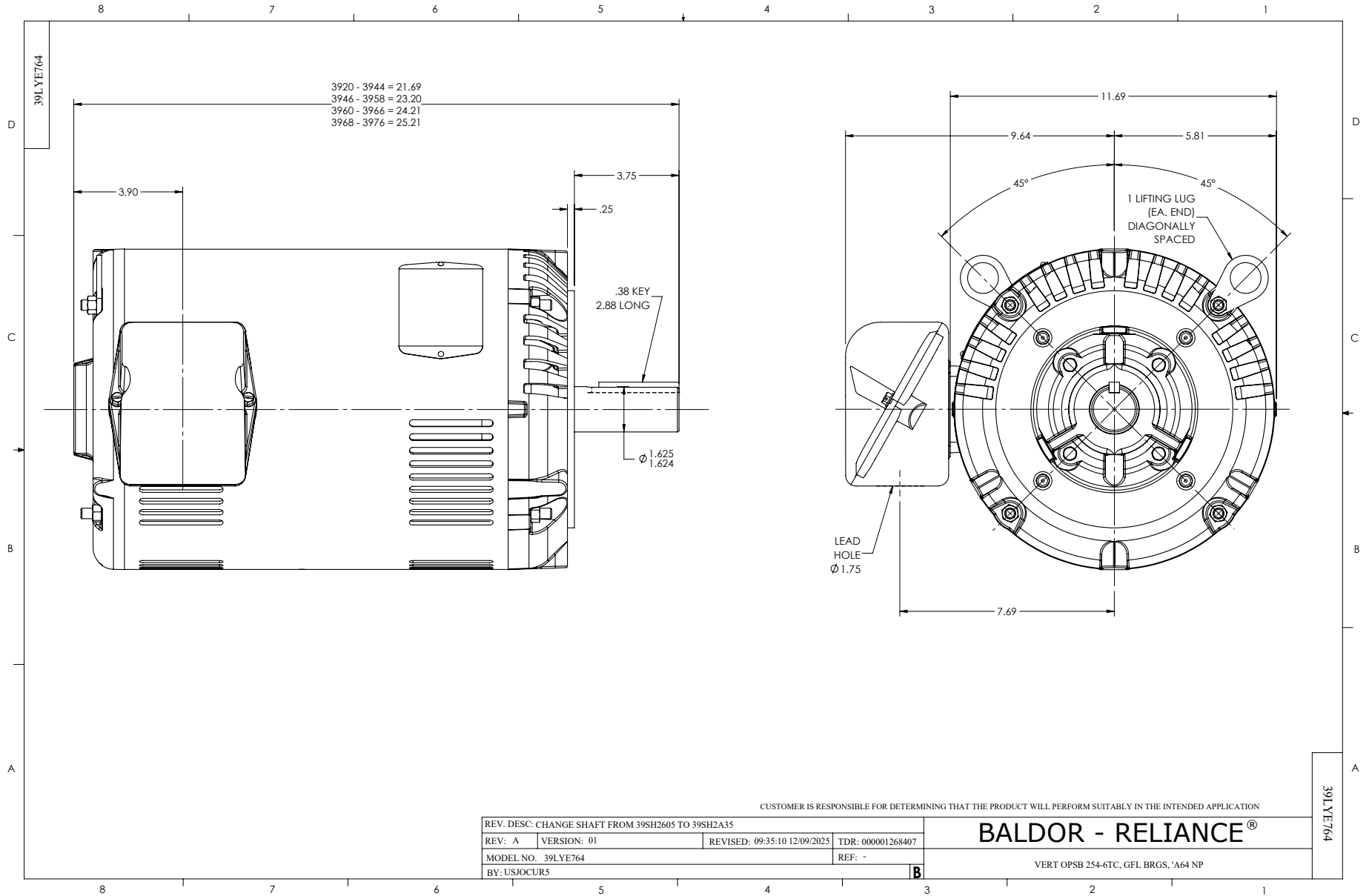
Typical performance - not guaranteed values.

20 HP 3 PH 60 HZ 3525 RPM 460 V 3940M

TORQUES (LB-FT): PO=131 PU=45 LR=68 LRA=200



7/8/2026 ACPERF, record # 101130



CD0005



LOW VOLTAGE  
(2Y)



LINE

HIGH VOLTAGE  
(1Y)



LINE

NOTES:

1. INTERCHANGE ANY TWO LINE LEADS TO REVERSE ROTATION.
2. OPTIONAL THERMOSTATS ARE PROVIDED WHEN SPECIFIED.
3. ACTUAL NUMBER OF INTERNAL PARALLEL CIRCUITS MAY BE A MULTIPLE OF THOSE SHOWN ABOVE.
4. LEAD COLORS ARE OPTIONAL. LEADS MUST ALWAYS BE NUMBERED AS SHOWN.

CD0005

REV. DESC: REVISE TO SHOW OPTIONAL COLORS			
REV. LTR: E	BY: JLP	REVISED: 01/19/99 10:15	TDR: 0171435
S00000		FILE: AAA00005140	MDL: -
		MTL: -	

**BALDOR ELECTRIC Co.**

3PH, DV, 9 LEADS