



---

# Customer information packet

## VRBM3561T

3HP, 1700RPM, 3PH, 60HZ, 145TC, 7542M, TEFC, F1

Class - None

Division - Not Applicable

## Specifications

Enclosure	TEFC
Frame	145TC
Frame Material	Aluminum
Frequency	60.00 Hz
Motor Letter Type	Three Phase
Output @ Frequency	3.000 HP @ 60 HZ
Phase	3
Synchronous Speed @ Frequency	1800 RPM @ 60 HZ
Voltage @ Frequency	230.0 V @ 60 HZ 460.0 V @ 60 HZ
XP Class and Group	None
XP Division	Not Applicable
Agency Approvals	UR CSA
Ambient Temperature	40 °C
Base Indicator	No Mounting
Bearing Grease Type	Polyrex EM (-20F +300F)
Blower	None
Current @ Voltage	4.400 A @ 460.0 V 8.800 A @ 230.0 V
Design Code	D
Duty Rating	CONT
Efficiency @ 100% Load	85.5 %
Feedback Device	NO FEEDBACK
Heater Indicator	No Heater
High Voltage Full Load Amps	4.4 a
Insulation Class	F
Inverter Code	Not Inverter
KVA Code	K
Motor Lead Quantity/Wire Size	9 @ 18 AWG
Motor Standards	NEMA
Motor Type	7542M

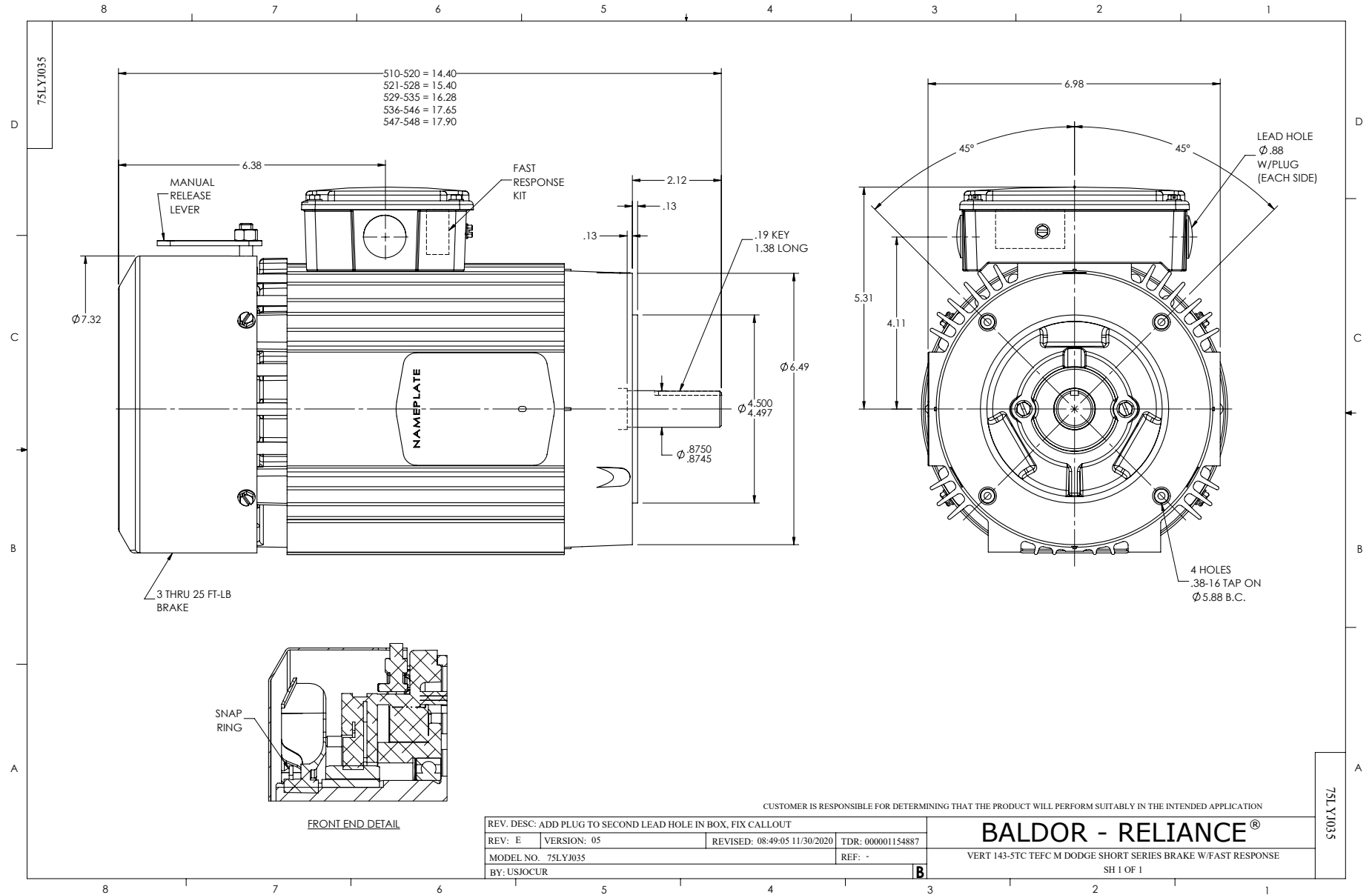
## Part detail

Revision	J
Type	AC
Mech. spec.	75J035
Base	
Status	PRD/A
Elec. spec.	75WGW119
Layout	75LYJ035
Eff. date	06-14-2021
CD Diagram	CD0005
Poles	04
Leads	9#18
Proprietary	False
Created date	07-25-2016

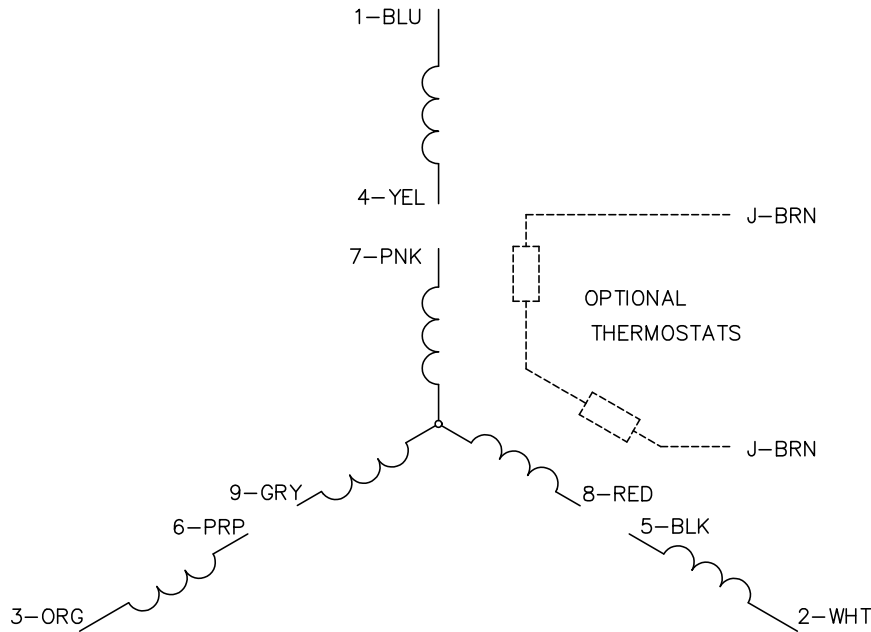
<b>Mounting Arrangement</b>	F1
<b>Number of Poles</b>	4
<b>Overall Length</b>	17.68 IN
<b>Power Factor</b>	75
<b>Product Family</b>	General Purpose
<b>Rodent Screen</b>	None
<b>Service Factor</b>	1.15
<b>Shaft Diameter</b>	0.875 IN
<b>Shaft Extension Location</b>	Pulley End
<b>Shaft Rotation</b>	Reversible
<b>Shaft Slinger Indicator</b>	No Slinger
<b>Speed</b>	1700 rpm
<b>Speed Code</b>	Single Speed
<b>Starting Method</b>	Direct on line
<b>Thermal Device - Winding</b>	None
<b>Winding Thermal 1</b>	None
<b>Winding Thermal 2</b>	None

**Nameplate**

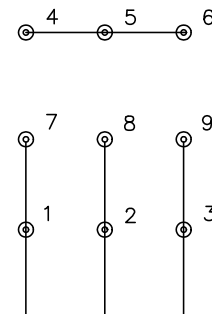
<b>NP1256L</b>									
<b>CAT.NO.</b>	VRBM3561T								
<b>SPEC.</b>	75J035W119G1								
<b>HP</b>	3								
<b>VOLTS</b>	230/460								
<b>AMP</b>	8.8/4.4								
<b>RPM</b>	1700								
<b>FRAME</b>	145TC		<b>HZ</b>	60		<b>PH</b>	3		
<b>SER.F.</b>	1.15	<b>CODE</b>	K	<b>DES</b>	D	<b>CLASS</b>	F		
<b>NEMA-NOM-EFF</b>	85.5	<b>PF</b>	75						
<b>RATING</b>	40C AMB-CONT								
<b>CC</b>		<b>USABLE AT 208V</b>							
<b>DE</b>	6205	<b>ODE</b>	6205						
<b>ENCL</b>	TEFC	<b>SN</b>							



CD0005

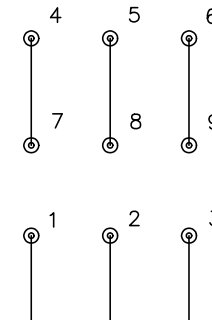


LOW VOLTAGE  
(2Y)



LINE

HIGH VOLTAGE  
(1Y)



LINE

NOTES:

1. INTERCHANGE ANY TWO LINE LEADS TO REVERSE ROTATION.
2. OPTIONAL THERMOSTATS ARE PROVIDED WHEN SPECIFIED.
3. ACTUAL NUMBER OF INTERNAL PARALLEL CIRCUITS MAY BE A MULTIPLE OF THOSE SHOWN ABOVE.
4. LEAD COLORS ARE OPTIONAL. LEADS MUST ALWAYS BE NUMBERED AS SHOWN.

CD0005

REV. DESC: REVISE TO SHOW OPTIONAL COLORS			
REV. LTR: E	BY: JLP	REVISED: 01/19/99 10:15	TDR: 0171435
S00000		FILE: AAA00005140	MDL: -
		MTL: -	

**BALDOR ELECTRIC Co.**

3PH, DV, 9 LEADS