



Customer information packet

VRBM3558T

2HP, 1700RPM, 3PH, 60HZ, 145TC, 3528M, TEFC, F1

Class - None

Division - Not Applicable

Specifications

Enclosure	TEFC
Frame	145TC
Frame Material	Aluminum
Frequency	60.00 Hz
Haz Area Class and Group	None
Haz Area Division	Not Applicable
Motor Letter Type	Three Phase
Output @ Frequency	2.000 HP @ 60 HZ
Phase	3
Synchronous Speed @ Frequency	1800 RPM @ 60 HZ
Voltage @ Frequency	460.0 V @ 60 HZ 230.0 V @ 60 HZ
Agency Approvals	C UR US
Ambient Temperature	40 °C
Base Indicator	No Mounting
Bearing Grease Type	Polyrex EM (-20F +300F)
Blower	None
Current @ Voltage	3.600 A @ 460.0 V 7.200 A @ 230.0 V
Design Code	D
Duty Rating	CONT
Efficiency @ 100% Load	80.0 %
Feedback Device	NO FEEDBACK
Heater Indicator	No Heater
High Voltage Full Load Amps	3.6 a
Insulation Class	F
Inverter Code	Not Inverter
KVA Code	L
Motor Lead Quantity/Wire Size	9 @ 18 AWG
Motor Standards	NEMA
Motor Type	3528M
Mounting Arrangement	F1

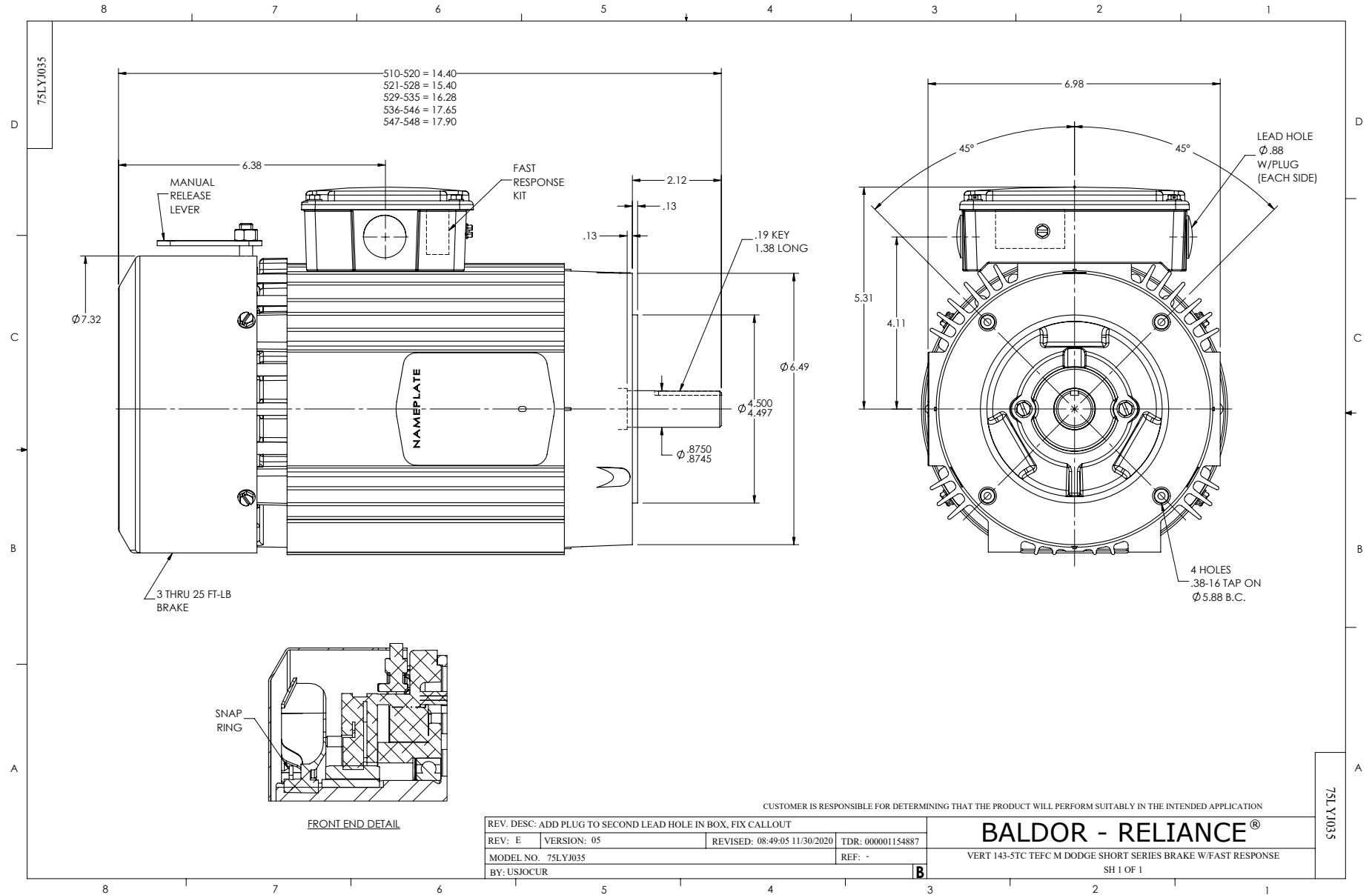
Part detail

Revision	B
Type	AC
Mech. spec.	75J035
Base	
Status	PRD/A
Elec. spec.	35WGK323
Layout	75LYJ035
Eff. date	03-10-2025
CD Diagram	CD0005
Poles	04
Leads	9#18
Proprietary	False
Created date	09-26-2024

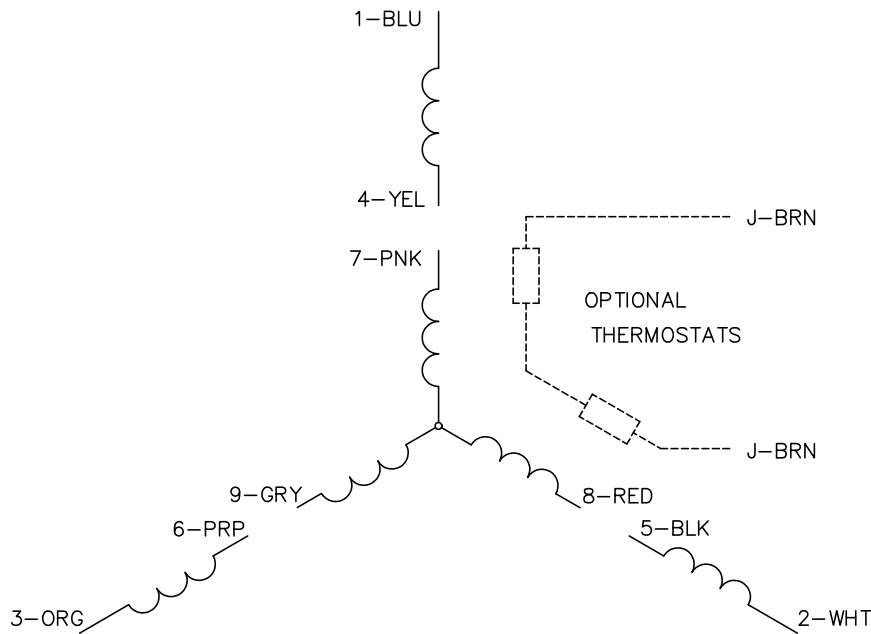
Number of Poles	4
Overall Length	15.43 IN
Power Factor	64
Product Family	General Purpose
Rodent Screen	None
Service Factor	1.15
Shaft Diameter	0.875 IN
Shaft Rotation	Reversible
Shaft Slinger Indicator	No Slinger
Speed	1700 rpm
Speed Code	Single Speed
Starting Method	Direct on line
Thermal Device - Winding	None
Winding Thermal 1	None
Winding Thermal 2	None

Nameplate

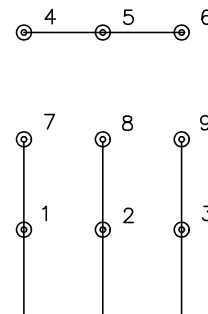
NP1256L									
CAT.NO.	VRBM3558T								
SPEC.	75J035K323								
HP	2								
VOLTS	230/460								
AMP	7.2/3.6								
RPM	1700								
FRAME	145TC		HZ	60		PH	3		
SER.F.	1.15	CODE	L	DES	D	CLASS	F		
NEMA-NOM-EFF	80	PF	64						
RATING	40C AMB-CONT								
CC									
DE	6205		ODE	6205					
ENCL	TEFC	SN							
	SFA 7.76/3.88								



CD0005

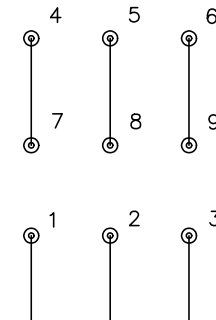


LOW VOLTAGE
(2Y)



LINE

HIGH VOLTAGE
(1Y)



LINE

NOTES:

1. INTERCHANGE ANY TWO LINE LEADS TO REVERSE ROTATION.
2. OPTIONAL THERMOSTATS ARE PROVIDED WHEN SPECIFIED.
3. ACTUAL NUMBER OF INTERNAL PARALLEL CIRCUITS MAY BE A MULTIPLE OF THOSE SHOWN ABOVE.
4. LEAD COLORS ARE OPTIONAL. LEADS MUST ALWAYS BE NUMBERED AS SHOWN.

CD0005

REV. DESC: REVISE TO SHOW OPTIONAL COLORS			
REV. LTR: E	BY: JLP	REVISED: 01/19/99 10:15	TDR: 0171435
S00000		FILE: AAA00005140	MDL: -
		MTL: -	

BALDOR ELECTRIC Co.

3PH, DV, 9 LEADS