

**BALDOR • RELIANCE**

---

# Customer information packet

## VPECP84314T-4

60HP, 1780RPM, 3PH, 60HZ, 364VP, TEFC, V1

Class - None

Division - Division II

Copyright © All product information within this document is subject to ABB Motors and Mechanical Inc. copyright © protection, unless otherwise noted.

3/25/2025 11:10:36 PM

## Specifications

Enclosure	TEFC
Frame	364VP
Frame Material	Iron
Frequency	60.00 Hz
Haz Area Class and Group	None
Haz Area Division	Division II
Motor Letter Type	Three Phase
Output @ Frequency	60.000 HP @ 60 HZ
Phase	3
Synchronous Speed @ Frequency	1800 RPM @ 60 HZ
Voltage @ Frequency	460.0 V @ 60 HZ
Agency Approvals	CCSA US NEMA PREMIUM UR
Ambient Temperature	40 °C
Auxillary Box	No Auxillary Box
Base Indicator	Rigid
Bearing Grease Type	Polyrex EM (-20F +300F)
Constant Torque Speed Range	10-60
Current @ Voltage	68.000 A @ 460.0 V
Design Code	B
Drip Cover	Drip Cover
Duty Rating	CONT
Efficiency @ 100% Load	95.0 %
Enclosure Modification	841
Feedback Device	NO FEEDBACK
Haz Area Temp Code	T3
Heater Indicator	No Heater
High Voltage Full Load Amps	68.0 a
Insulation Class	F
Inverter Code	Inverter Ready
IP Rating	IP56

## Part detail

Revision	E
Type	AC
Mech. spec.	
Base	
Status	PRD/A
Elec. spec.	A36WG0054
Layout	617428-660
Eff. date	03-15-2024
CD Diagram	416820-036
Poles	04
Leads	3#4
Proprietary	False
Created date	03-05-2019

<b>KVA Code</b>	G
<b>Lifting Lugs</b>	Vertical Lifting Lugs
<b>Motor Lead Quantity/Wire Size</b>	3 @ 4 AWG
<b>Motor Standards</b>	NEMA
<b>Motor Type</b>	A36062M
<b>Mounting Arrangement</b>	V1
<b>No Load Current</b>	20.1 a
<b>Number of Poles</b>	4
<b>Overall Length</b>	37.27 IN
<b>Power Factor</b>	87
<b>Product Family</b>	Pump - Centrifugal
<b>Pulley End Bearing Type</b>	Ball
<b>Service Factor</b>	1.15
<b>Shaft Diameter</b>	1.625 IN
<b>Shaft Ground Indicator</b>	No Shaft Grounding
<b>Shaft Rotation</b>	Reversible
<b>Shaft Slinger Indicator</b>	No Slinger
<b>Speed</b>	1780 rpm
<b>Speed Code</b>	Single Speed
<b>Starting Method</b>	Direct on line
<b>Thermal Device - Winding</b>	None

**Nameplate**

---

**000613007EX**

---

<b>CAT NO</b>	VPECP84314T-4	<b>SPEC NO.</b>	A36-7107-0054
<b>NO. ROTOR BARS</b>	47	<b>GREASE TYPE</b>	POLYREX EM
<b>NO. SLOTS</b>	60	<b>NL AMPS AT RATED VOLTAGE</b>	20.1
<b>5 YEAR WARRANTY</b>		<b>WINDING RES @25 C</b>	.1110
<b>MFG. DATE</b>		<b>SER.NO</b>	

---

**NP4566**

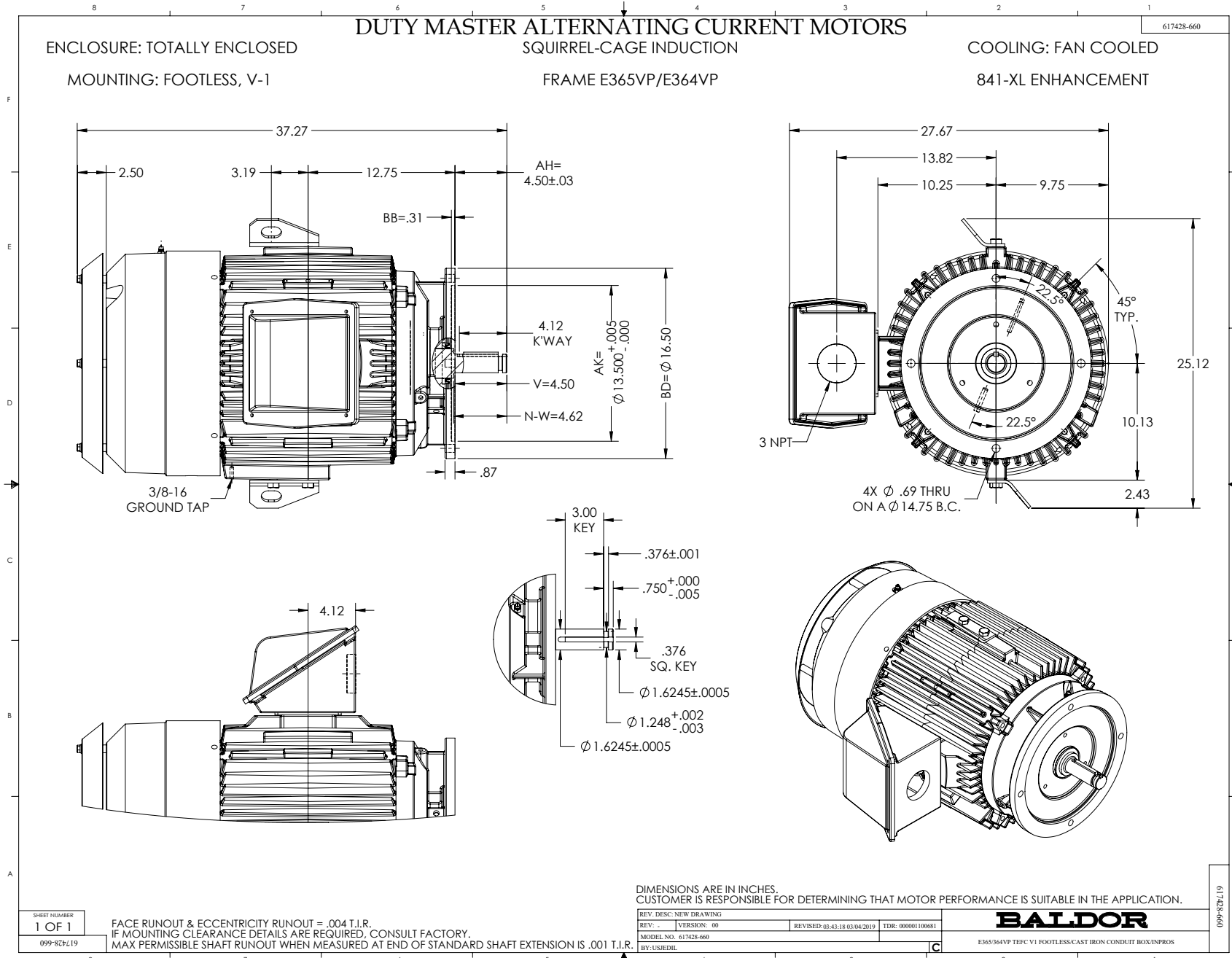
<b>CAT NO</b>	VPECP84314T-4	<b>SPEC NO.</b>	A36-7107-0054						
<b>HP</b>	60	<b>AMPS</b>	68	<b>VOLTS</b>	460	<b>DESIGN</b>	B		
<b>FRAME SIZE</b>	364VP	<b>RPM</b>	1780	<b>HZ</b>	60	<b>AMB</b>	40	<b>SF</b>	1.15
<b>D.E. BRG.DATA</b>	6313	<b>O.D.E. BRG.DATA</b>	7310	<b>PH</b>	3	<b>DUTY</b>	CONT	<b>INSUL.CLASS</b>	F
<b>D.E. BRG.</b>	65BC03JP30X	<b>TYPE</b>	ENCL	<b>TEFC</b>	CODE	G			
<b>O.D.E. BRG.</b>	BA2B_459310	<b>POWER FACTOR</b>	87	<b>NEMA-NOM-EFFICIENCY</b>	95				
<b>3/4 LOAD EFF.</b>	95.3	<b>IP</b>	56	<b>MAX CORR KVAR</b>	10	<b>GUARANTEED EFFICIENCY</b>	94.1		
<b>TEMP CODE</b>	T3	<b>TEMP =</b>	200						
<b>CHP HZ</b>	60-90	<b>CT HZ</b>	10-60	<b>VT HZ</b>	0-60				
<b>INVERTER-TEMP-CODE</b>	T3								
<b>SER.NO.</b>		<b>MOTOR WEIGHT</b>							











416820-036

A-C MOTOR  
CONNECTION DIAGRAM  
STANDARD 3 LEAD CONNECTED



(N.P. 1575-BA)

416820-036

REV. DESC: LOADED TO BUS, C/R 335225		
REV. LTR: -	VERSION: 00	TDR: 000000538207
FILE: \MGA\00000\682	REVISED: 11:54:06 04/30/2010	
MTL: -	BY: RAGRA	

**BALDOR**

CONN DIAG - STANDARD 3 LEAD  
SH 1 of 1