

ABB BALDOR RELIANCE III

Customer information packet

VPECP84313T-4

75HP, 3555RPM, 3PH, 60HZ, 365VP, TEFC, V1

Class - None

Division - Division II

Specifications

Enclosure	TEFC
Frame	365LP
Frame Material	Iron
Frequency	60.00 Hz
Haz Area Class and Group	None
Haz Area Division	Division II
Motor Letter Type	Three Phase
Output @ Frequency	75.000 HP @ 60 HZ
Phase	3
Synchronous Speed @ Frequency	3600 RPM @ 60 HZ
Voltage @ Frequency	460.0 V @ 60 HZ
Agency Approvals	CCSA US NEMA PREMIUM UR
Ambient Temperature	40 °C
Auxiliary Box	NO AUXILLARY BOX
Base Indicator	No Mounting
Bearing Grease Type	Polyrex EM (-20F +300F)
Constant Torque Speed Range	15-60
Current @ Voltage	81.500 A @ 460.0 V
Design Code	B
Drip Cover	Drip Cover
Duty Rating	CONT
Efficiency @ 100% Load	93.6 %
Enclosure Modification	841
Feedback Device	NO FEEDBACK
Haz Area Temp Code	T3
Heater Indicator	No Heater
High Voltage Full Load Amps	81.5 a
Insulation Class	F
Inverter Code	Inverter Ready
IP Rating	IP56

Part Detail

Revision	D
Type	AC
Mech. spec.	
Base	
Status	PRD/A
Elec. spec.	A36WG1544
Layout	617428-660
Eff. date	03-15-2024
CD Diagram	416820-036
Poles	02
Leads	3#2
Proprietary	False
Created date	02-28-2019

KVA Code	G
Lifting Lugs	Vertical Lifting Lugs
Motor Lead Quantity/Wire Size	3 @ 2 AWG
Motor Standards	NEMA
Motor Type	A36068M
Mounting Arrangement	V1
No Load Current	15.5 a
Number of Poles	2
Overall Length	37.27 IN
Power Factor	92
Product Family	Pump - Centrifugal
Pulley End Bearing Type	Ball
Service Factor	1.15
Shaft Diameter	2.124 IN
Shaft Ground Indicator	No Shaft Grounding
Shaft Rotation	Reversible
Shaft Slinger Indicator	No Slinger
Speed	3555 rpm
Speed Code	Single Speed
Starting Method	Direct on line
Thermal Device - Winding	None

Nameplate

000613007EX

CAT NO	VPECP84313T-4	SPEC NO.	A36-9017-1544
NO. ROTOR BARS	38	GREASE TYPE	POLYREX EM
NO. SLOTS	48	NL AMPS AT RATED VOLTAGE	15.5
5 YEAR WARRANTY		WINDING RES @25 C	.0744 OHMS
MFG. DATE	SFA 94.3	SER.NO	

NP4566

CAT NO	VPECP84313T-4	SPEC NO.	A36-9017-1544						
HP	75	AMPS	81.5	VOLTS	460	DESIGN	B		
FRAME SIZE	365VP	RPM	3555	HZ	60	AMB	40	SF	1.15
D.E. BRG.DATA	6313	O.D.E. BRG.DATA	7310	PH	3	DUTY	CONT	INSUL.CLASS	F
D.E. BRG.	65BC03JP30X	TYPE	ENCL	TEFC	CODE	G			
O.D.E. BRG.	BA2B_459310	POWER FACTOR	92	NEMA-NOM-EFFICIENCY	93.6				
3/4 LOAD EFF.	94.0	IP	56	MAX CORR KVAR	5	GUARANTEED EFFICIENCY	92.4		
TEMP CODE	T3	TEMP =	200						
CHP HZ	60-75	CT HZ	15-60	VT HZ	0-60				
INVERTER-TEMP-CODE	T3								
SER.NO.		MOTOR WEIGHT							

REL. S.O.	FRAME	HP	TYPE	PHASE/ HERTZ	RPM	VOLTS
	365LPZ	75	P	3/60	3555	460
AMPS	DUTY	AMB °C/ INSUL.	S.F.	NEMA DESIGN	CODE LETTER	ENCL.
81.5	CONT	40/F	1.15	B	G	TEFC
E/S	ROTOR	TEST S.O.	TEST DATE	STATOR RES. @25 °C OHMS (BETWEEN LINES)		
892018	418141005TE	---	---	.0744		

PERFORMANCE

LOAD	HP	AMPERES	RPM	% POWER FACTOR	% EFFICIENCY
NO LOAD	0	15.5	3600	9.28	0
1/4	18.8	24.6	3589	78.1	91.5
2/4	37.6	41.1	3577	91.3	93.9
3/4	56.2	60.4	3565	92.7	94.0
4/4	75.0	81.5	3553	92.0	93.6
5/4	93.8	103	3539	91.2	93.1

SPEED TORQUE

	RPM	TORQUE % FULL LOAD	TORQUE LB.-FT.	AMPERES
LOCKED ROTOR	0	220	244	530
PULL UP	1565	190	211	435
BREAKDOWN	3383	226	250	259
FULL LOAD	3553	100	111	81.5

AMPERES SHOWN FOR 460. VOLT CONNECTION. IF OTHER VOLTAGE CONNECTIONS ARE AVAILABLE, THE AMPERES WILL VARY INVERSELY WITH THE RATED VOLTAGE

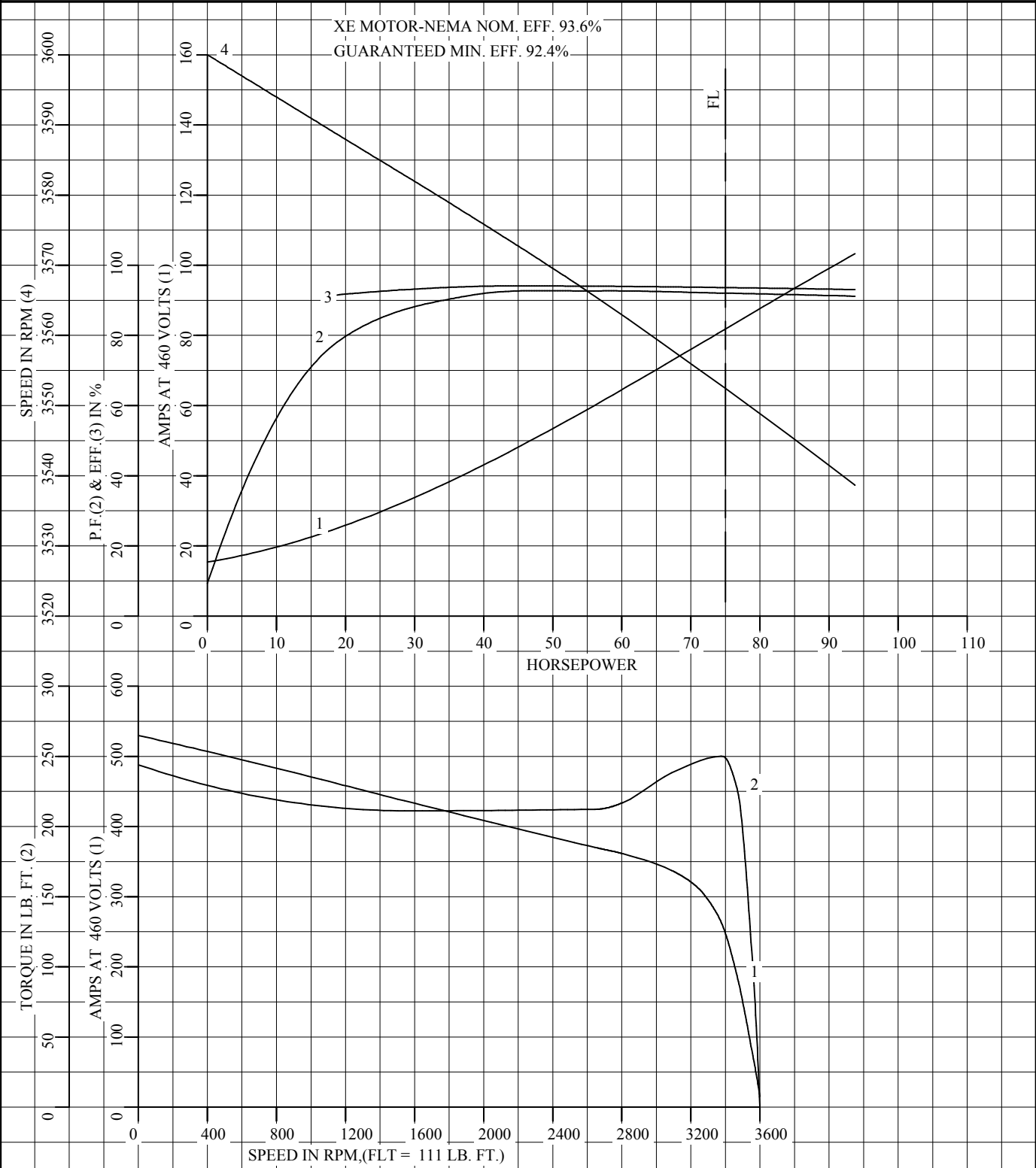
REMARKS: TYPICAL DATA
XE MOTOR-NEMA NOM. EFF. 93.6%
GUARANTEED MIN. EFF. 92.4%



DR. BY G. R. WEBB
CK. BY W. L. SMITH
APP. BY W. L. SMITH
DATE 01/05/12

**A-C MOTOR
PERFORMANCE A36WG1544-R028
DATA** ISSUE DATE 03/31/21

REL S.O.	RPM 3555	S.F. 1.15	ROTOR 418141005TE
FRAME 365LPZ	VOLTS 460	NEMA DESIGN B	TEST S.O. TYPICAL DATA
HP 75	AMPS 81.5	CODE LETTER G	TEST DATE ---
TYPE P	DUTY CONT	ENCLOSURE TEFC	STATOR RES. @ 25 °C .0744
PHASE/HERTZ 3/60	AMB °C/INSUL 40/F	E/S 892018	OHMS (BETWEEN LINES)



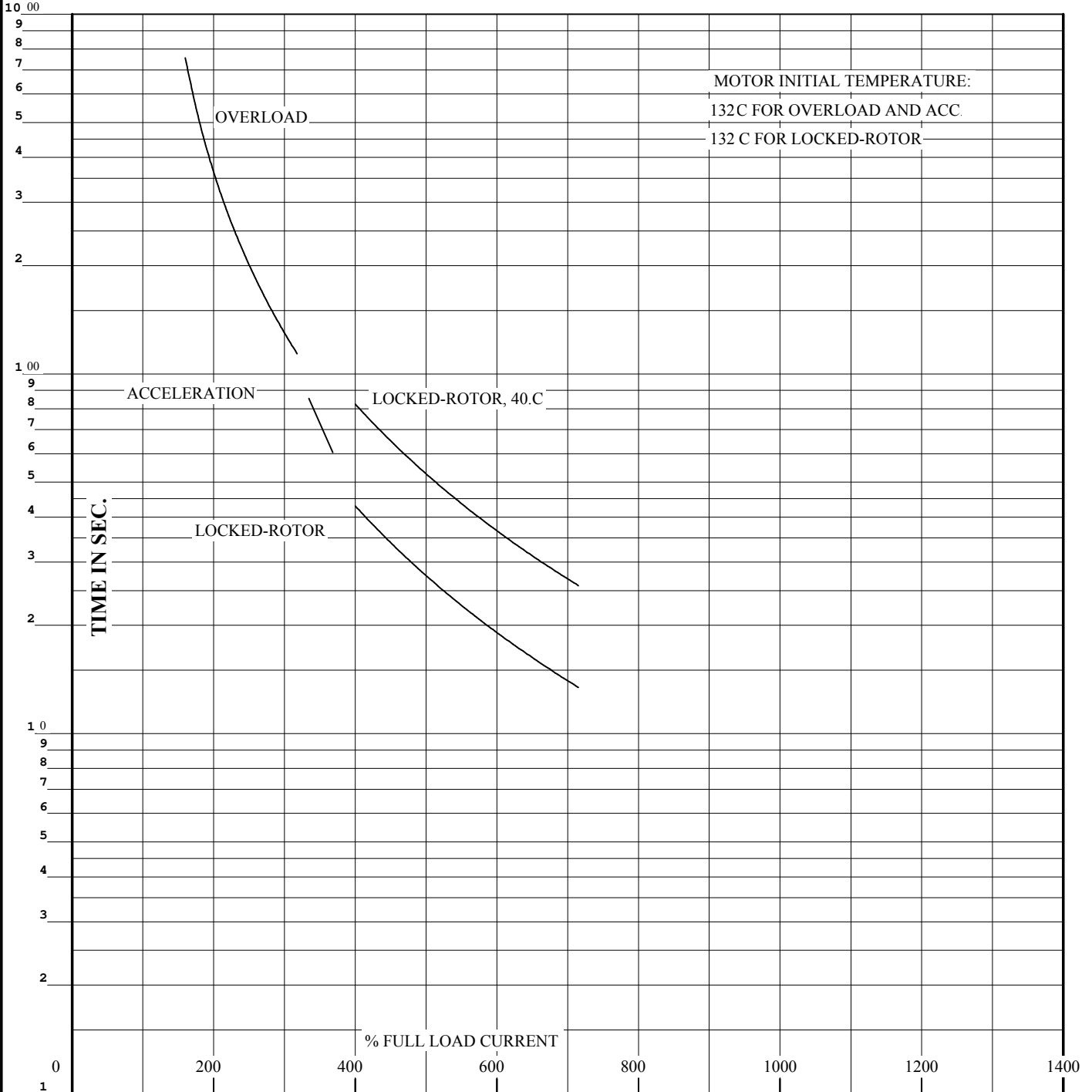
AMPERES SHOWN FOR 460 VOLT CONNECTION, IF OTHER VOLTAGE CONNECTIONS ARE AVAILABLE, THE AMPERES WILL VARY INVERSELY WITH THE RATED VOLTAGE.



DR. BY G. R. WEBB
 CK. BY W. L. SMITH
 APP. BY W. L. SMITH
 DATE 01/05/12

**A-C MOTOR
PERFORMANCE
CURVES** **A36WG1544-R028**
 ISSUE DATE 03/31/21

REL. S.O.	RPM 3555	S.F. 1.15	ROTOR 418141005TE
FRAME 365LPZ	VOLTS 460	NEMA DESIGN B	TEST S.O. TYPICAL DATA
HP 75	AMPS 81.5	CODE LETTER G	TEST DATE ---
TYPE P	DUTY CONT	ENCLOSURE TEFC	STATOR RES. @ 25 °C .0744
PHASE/HERTZ 3/60	AMB °C/INSUL 40/F	E/S 892018	OHMS (BETWEEN LINES)



THERMAL LIMIT CURVE

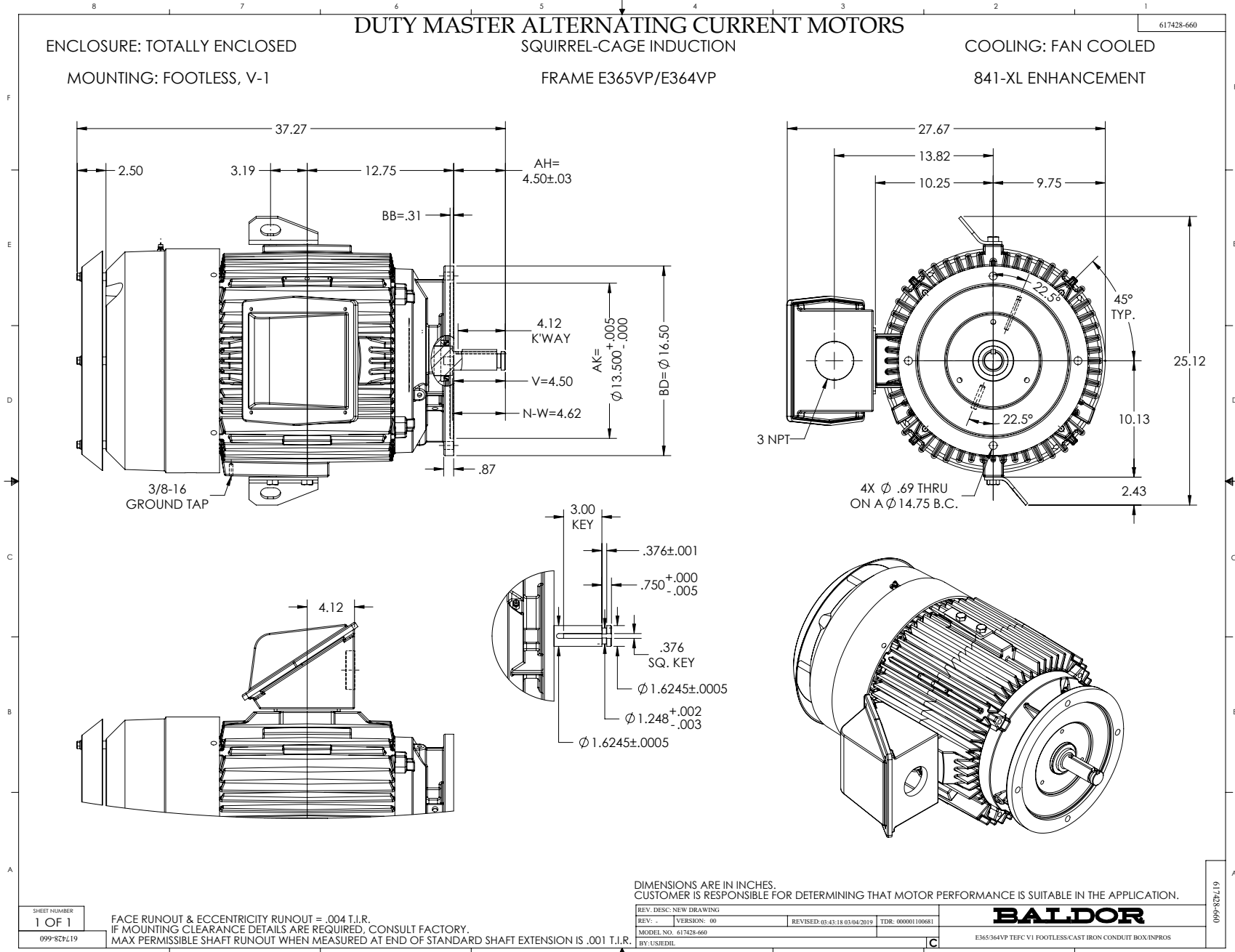
REMARKS: XE MOTOR-NEMA NOM. EFF. 93.6%
GUARANTEED MIN. EFF. 92.4%

AMPERES SHOWN FOR 460 VOLT CONNECTION, IF OTHER VOLTAGE CONNECTIONS ARE AVAILABLE, THE AMPERES WILL VARY INVERSELY WITH THE RATED VOLTAGE.



DR. BY G. R. WEBB
CK. BY W. L. SMITH
APP. BY W. L. SMITH
DATE 01/05/12

**A-C MOTOR
PERFORMANCE CURVES** A36WG1544-R028
ISSUE DATE 03/31/21 Page 8 of 10



416820-036

**A-C MOTOR
CONNECTION DIAGRAM
STANDARD 3 LEAD CONNECTED**



(N.P. 1575-BA)

REV. DESC: LOADED TO BUS, C/R 335225

REV. LTR: -

VERSION: 00

TDR: 000000538207

FILE: \MGA\00000\682

REVISED: 11: 54: 06 04/30/2010

MTL: -

BY: RAGRA

BALDOR

CONN DIAG - STANDARD 3 LEAD

SH 1 of 1

416820-036