

BALDOR • RELIANCE

Customer information packet

VPECP84115T-4

50HP, 1770RPM, 3PH, 60HZ, 326VP, 1272M, TEFC, V

Class - CLI GP A,B,C,D

Division - Division II

Specifications

Enclosure	TEFC
Frame	326LP
Frame Material	Iron
Frequency	60.00 Hz
Haz Area Class and Group	CLI GP A,B,C,D
Haz Area Division	Division II
Motor Letter Type	Three Phase
Output @ Frequency	50.000 HP @ 60 HZ
Phase	3
Synchronous Speed @ Frequency	1800 RPM @ 60 HZ
Voltage @ Frequency	460.0 V @ 60 HZ
Agency Approvals	UR NEMA PREMIUM CSA EEV CCSA US
Ambient Temperature	40 °C
Auxillary Box	No Auxillary Box
Auxillary Box Lead Termination	None
Base Indicator	No Mounting
Bearing Grease Type	Polyrex EM (-20F +300F)
Blower	None
Constant Torque Speed Range	1
Current @ Voltage	57.000 A @ 460.0 V
Design Code	B
Drip Cover	Drip Cover
Duty Rating	CONT
Efficiency @ 100% Load	94.5 %
Electrically Isolated Bearing	Not Electrically Isolated
Enclosure Modification	841
Feedback Device	NO FEEDBACK
Haz Area Temp Code	T3
Heater Indicator	No Heater

Part detail

Revision	K
Type	AC
Mech. spec.	
Base	
Status	PRD/A
Elec. spec.	12WGX731
Layout	12LY-000-261
Eff. date	08-04-2023
CD Diagram	CD0006
Poles	04
Leads	3#8
Proprietary	False
Created date	07-09-2019

High Voltage Full Load Amps	57.0 a
Insulation Class	F
Inverter Code	Inverter Duty
IP Rating	IP56
KVA Code	G
Lifting Lugs	Vertical Lifting Lugs
Locked Bearing Indicator	Locked Bearing
Max Speed	2700 rpm
Motor Lead Termination	Ring Terminals
Motor Standards	NEMA
Motor Type	1272M
Mounting Arrangement	V1
Number of Poles	4
Overall Length	38.56 IN
Power Factor	87
Product Family	Chem Process S/P 32-8 IEEE 841
Pulley Face Code	P-Base
Rodent Screen	None
Service Factor	1.15
Shaft Diameter	2.125 IN
Shaft Ground Indicator	No Shaft Grounding
Shaft Rotation	Reversible
Speed	1770 rpm
Speed Code	Single Speed
Starting Method	Direct on line
Thermal Device - Bearing	None
Thermal Device - Winding	None
Vibration Sensor Indicator	No Vibration Sensor
Winding Thermal 1	None
Winding Thermal 2	None

Nameplate

NP4332

STK.NO.	VPECP84115T-4	P/N		ENCLOSURE	TEFC
SPEC.	12-0000-0804	CC	010A	FRAME	326VP
HP	50	CLASS	F	HZ	60
RPM	1770	RPM MAX	2700	ODE BRG	SPL DE BRG 6312
VOLT	460	PH	3	DES	B
AMP	57	PH	3	DES	B
RATING	40C AMB-CONT	KVA-CODE	G	D.E. BRG.	60BC03X30X
NEMA-NOM-EFF	94.5	MOTOR WEIGHT	700	O.D.E. BRG.	BA2B459309
G.MIN.EFF	93.6	MAX. KVAR	9.4	GREASE	POLYREX EM
TEMP CODE	T3	BLANK		INV.TYPE	PWM
TEMP =	200	# OF ROTOR BARS	40	SER.F.	1.15
CT HZ FROM	1	# OF STATOR SLOTS	48	IP	56
HTR-VOLTS		PF	87	INV.TYPE	PWM
HTR-AMPS		INVERTER-TEMP-CODE	200	TEMP =	200
HTR-WATTS		C HP FR	60	C HP TO	90
MAX. SPACE HEATER TEMP.		CT HZ TO	60	VT HZ FROM	0
VT HZ TO	60				

AC Induction Motor Performance Data

Record # 47222

Typical performance - not guaranteed values

Winding: 12WGX731-R055		Type: 1272M		Enclosure: TEFC	
Nameplate Data			460 V, 60 Hz: Single Voltage Motor		
Rated Output (HP)	50	Full Load Torque	148 LB-FT		
Volts	460	Start Configuration	direct on line		
Full Load Amps	57	Breakdown Torque	446 LB-FT		
R.P.M.	1770	Pull-up Torque	183 LB-FT		
Hz	60	Locked-rotor Torque	254 LB-FT		
NEMA Design Code	B	Starting Current	355 A		
Service Factor (S.F.)	1.15	No-load Current	18.3 A		
NEMA Nom. Eff.	94.5	Line-line Res. @ 25°C	0.118 Ω		
Rating - Duty	40C AMB-CONT	Temp. Rise @ Rated Load	61°C		
S.F. Amps		Temp. Rise @ S.F. Load	75°C		
		Locked-rotor Power Factor	24.4		
		Rotor inertia	9.59 LB-FT ²		

Load Characteristics 460 V, 60 Hz, 50 HP

% of Rated Load	25	50	75	100	125	150	S.F.
Power Factor	58	78	85	87	87	87	88
Efficiency	92.1	94.7	94.9	94.5	93.9	92.9	94.1
Speed	1791	1785	1779	1772	1765	1756	1768
Line amperes	22.3	31.9	43.5	56.9	71.3	87.1	65.5

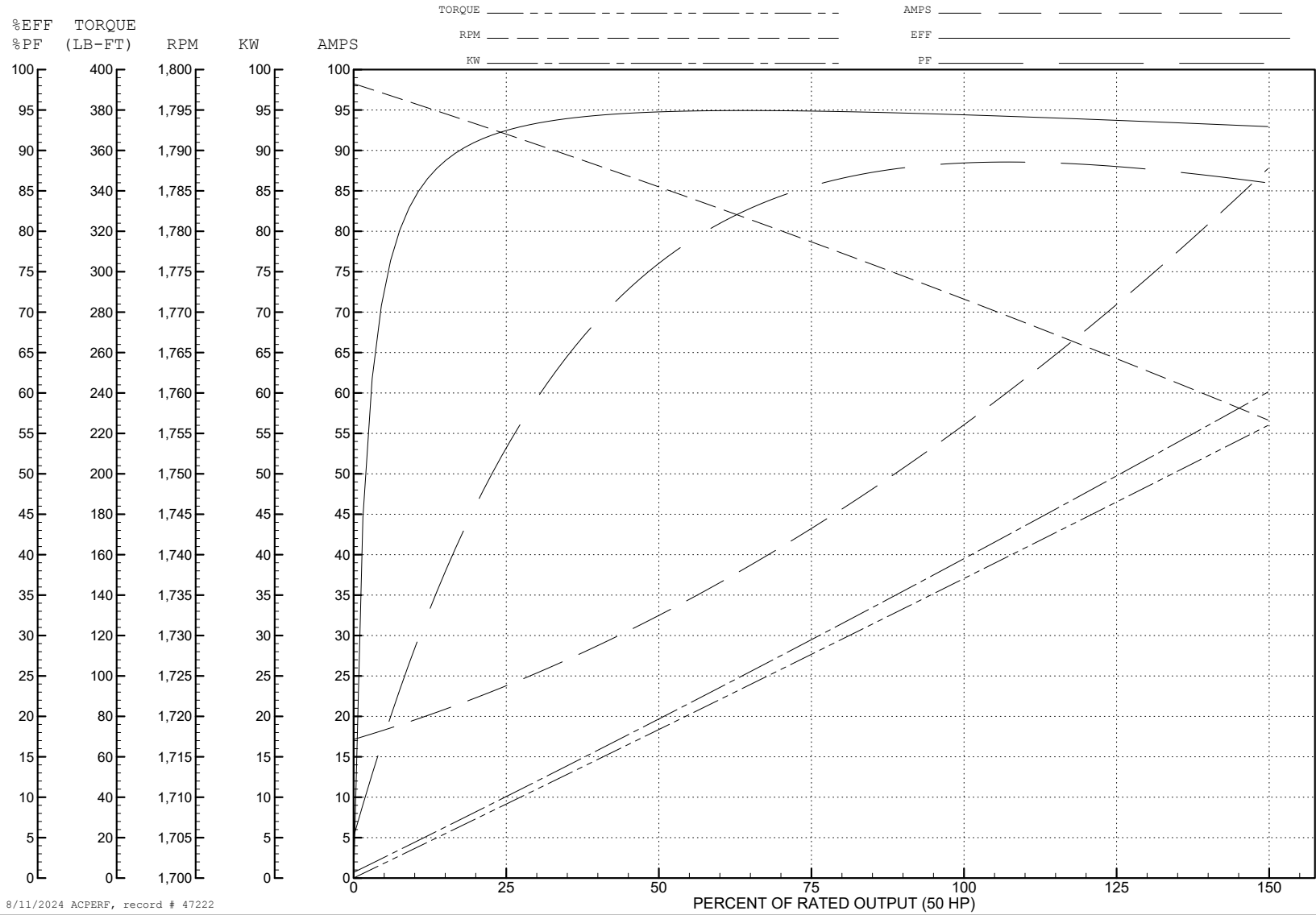
ABB Motors and Mechanical Inc.

WINDING # 12WGX731

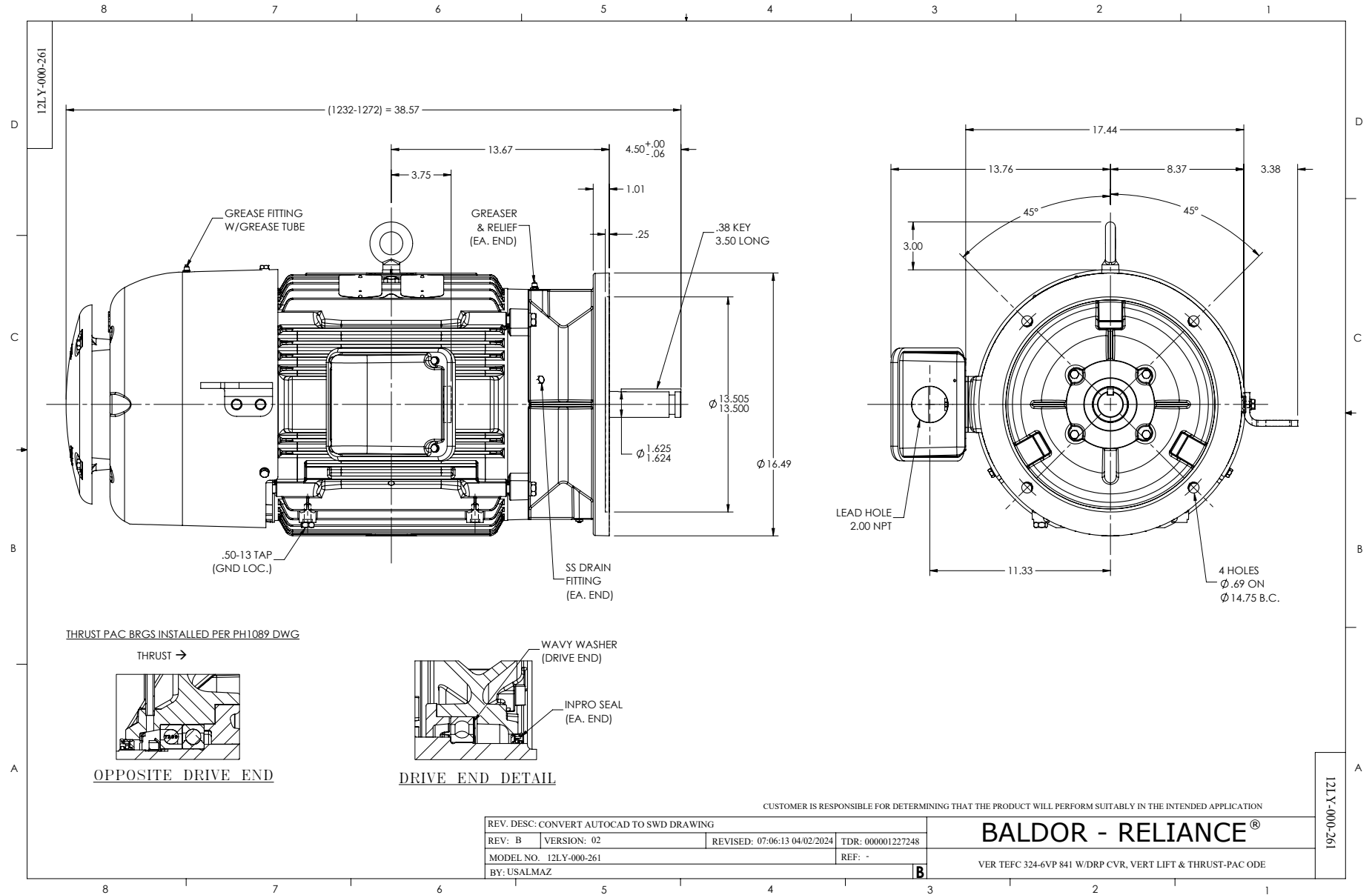
Typical performance - not guaranteed values.

50 HP 3 PH 60 HZ 1770 RPM 460 V 1272M

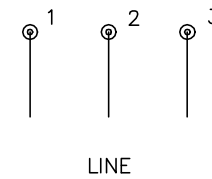
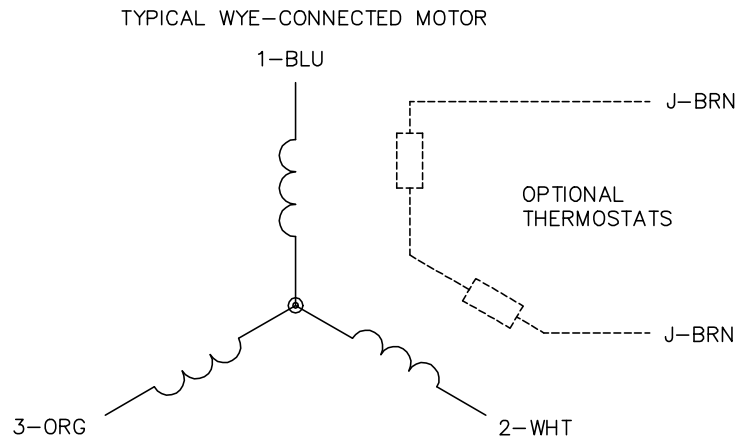
TORQUES (LB-FT): PO=446 PU=183 LR=254 LRA=355



8/11/2024 ACPERF, record # 47222



CD0006



NOTES:

1. THREE LEAD MOTOR MAY BE EITHER WYE CONNECTED OR DELTA CONNECTED.
2. INTERCHANGE ANY TWO LINE LEADS TO REVERSE ROTATION.
3. OPTIONAL THERMOSTATS ARE PROVIDED WHEN SPECIFIED.
4. ACTUAL NUMBER OF INTERNAL PARALLEL CIRCUITS MAY VARY.
5. LEAD COLORS ARE OPTIONAL. LEADS MUST BE NUMBERED AS SHOWN.

CD0006

REV. DESC: ADD CLASS CONN00000007		
REV. LTR: E	VERSION: 01	TDR: 000001099922
FILE: \AAA\00005\141	REVISED: 10:24:49 02/19/2019	BY: ENBRIRO
MTL: -	© □	

BALDOR - RELIANCE®

3PH, SV, 3 LEADS, WYE OR DELTA CONNECTED

SH 1 of 1