

BALDOR® • RELIANCE®

Customer information packet

VPECP4313T

75HP, 3555RPM, 3PH, 60HZ, 365VP, TEFC, V1

Class - None

Division - Not Applicable

Copyright © All product information within this document is subject to ABB Motors and Mechanical Inc. copyright © protection, unless otherwise noted.

9/9/2024 7:33:44 AM

Specifications

Enclosure	TEFC
Frame	365VP
Frame Material	Iron
Frequency	60.00 Hz
Haz Area Class and Group	None
Haz Area Division	Not Applicable
Motor Letter Type	Three Phase
Output @ Frequency	75.000 HP @ 60 HZ
Phase	3
Synchronous Speed @ Frequency	3600 RPM @ 60 HZ
Voltage @ Frequency	230.0 V @ 60 HZ 460.0 V @ 60 HZ
Agency Approvals	CSA EEV
Ambient Temperature	40 °C
Auxillary Box	No Auxillary Box
Base Indicator	No Mounting
Bearing Grease Type	Polyrex EM (-20F +300F)
Constant Torque Speed Range	15-60
Current @ Voltage	161.000 A @ 230.0 V 80.700 A @ 460.0 V
Design Code	B
Drip Cover	Drip Cover
Duty Rating	CONT
Efficiency @ 100% Load	94.5 %
Feedback Device	NO FEEDBACK
Haz Area Temp Code	T3
Heater Indicator	No Heater
High Voltage Full Load Amps	80.7 a
Insulation Class	F
Inverter Code	Inverter Ready
KVA Code	G
Lifting Lugs	Vertical Lifting Lugs

Part detail

Revision	D
Type	AC
Mech. spec.	
Base	
Status	PRD/A
Elec. spec.	A36WG0319
Layout	617438-428
Eff. date	09-27-2023
CD Diagram	416820-002
Poles	02
Leads	3#2,6#4
Proprietary	False
Created date	07-01-2015

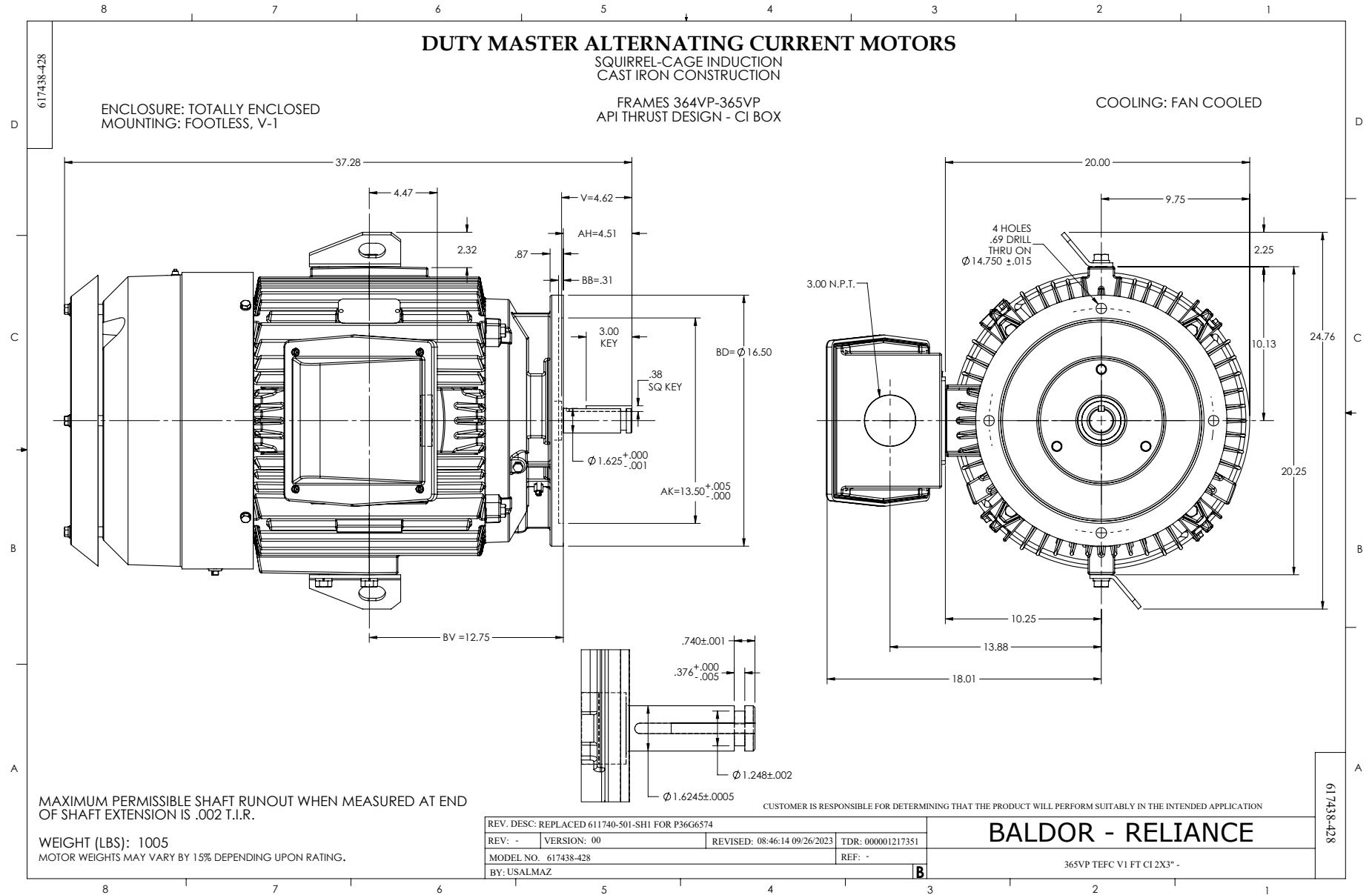
Motor Lead Quantity/Wire Size	3 @ 2 AWG
Motor Standards	NEMA
Motor Type	A36068M
Mounting Arrangement	V1
Number of Poles	2
Overall Length	37.25 IN
Power Factor	92
Product Family	General Industrial
Pulley End Bearing Type	Ball
Pulley Face Code	P-Base
Service Factor	1.15
Shaft Ground Indicator	No Shaft Grounding
Shaft Rotation	Reversible
Shaft Slinger Indicator	Shaft Slinger
Speed	3555 rpm
Speed Code	Single Speed
Starting Method	Direct on line
Thermal Device - Bearing	None
Thermal Device - Winding	None

Nameplate

NP2496L	
MOBIL POLYREX EM	

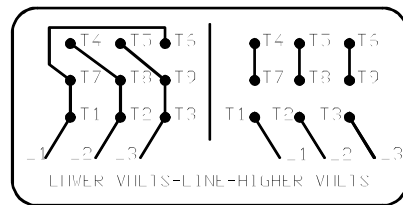
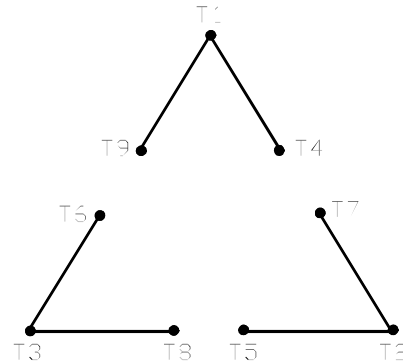
NP3238

CAT NO	VPECP4313T	SPEC NO.	A36-6893-0319							
HP	75	AMPS	161/80.7	VOLTS	230/460	DESIGN	B			
FRAME	365VP	RPM	3555	HZ	60	AMB	40	SF	1.15	
D.E. BRG.DATA	6313	O.D.E. BRG.DATA	7310		PH	3	DUTY	CONT	INSUL.CLASS	F
D.E. BRG.	65BC03JP30X	TYPE	P	ENCL	TEFC	CODE	G			
O.D.E. BRG.	BA2B_459310	POWER FACTOR	92		NEMA NOM EFFICIENCY	94.5				
3/4 LOAD EFF.	95.2	MAX CORR KVAR	5		GUARANTEED EFFICIENCY	93.6				
TEMP CODE	T3	TEMP =	200							
CHP HZ	60-90	CT HZ	15-60	VT HZ	0-60					
INVERTER-TEMP-CODE	T3									
SER.NO.		MOTOR WEIGHT								



416820-002

A-C MOTOR
 CONNECTION DIAGRAM
 STANDARD 9 LEAD DELTA-CONNECTED



(N.P. 1575-B)

416820-002

REV. DESC: FONT CHANGE FOR PDF SEARCHABLE		
REV. LTR: A	VERSION: 01	TDR: 000001009382
FILE: \MGA\00000\661	REVISED: 02:46:19 02/13/2020	BY: MGHMTT
MTL: -	© □	

BALDOR - RELIANCE®

CONN DIAG - STANDARD 9 LEAD, DELTA-CONNECTED

SH 1 of 1