

BALDOR • RELIANCE

Customer information packet

VP3605D

3.7KW, 1750RPM, DC, D112D, 3681P, TEFC, F1

Class - None

Division -

Specifications

Armature Voltage	180 V
Base Speed	1750 rpm
Enclosure	TEFC
Frame	D112D
Frame Material	Steel
Haz Area Class and Group	None
Output Power	5.000 HP
Agency Approvals	CE CSA UR
Ambient Temperature	40 °C
Armature Current	24.5 a
Armature Inertia	177.060 lb-ft ²
Base Indicator	Rigid
Bearing Grease Type	Polyrex EM (-20F +300F)
Drip Cover	No Drip Cover
Duty Rating	CONT
Feedback Device	NO FEEDBACK
Frame Prefix	D
Heater Indicator	No Heater
Lifting Lugs	Standard Lifting Lugs
Motor Lead Exit	Ko Box
Motor Lead Quantity/Wire Size	2 @ 12 AWG
Motor Lead Termination	Flying Leads
Motor Standards	IEC
Mounting Arrangement	B35
Overall Length	28.56 IN
Product Family	General Purpose
Pulley End Bearing Type	Sealed Bearing
Service Factor	1.00
Shaft Diameter	1.103 IN
Shaft Extension Location	Pulley End

Part detail

Revision	AB
Type	DC
Mech. spec.	36P184
Base	
Status	PRD/A
Elec. spec.	36WGZ509
Layout	36LYP184
Eff. date	03-19-2026
CD Diagram	CD0194
Poles	00
Leads	
Proprietary	False
Created date	01-01-0001

Shaft Ground Indicator	No Shaft Grounding
Shaft Rotation	Reversible
Shaft Slinger Indicator	No Slinger

Nameplate

NP0891L				
CAT.NO.	VP3605D			
SPEC.	36P184Z509			
HP	3.7KW	ENCL	TEFC	
RPM	1750 1/MIN			
FRAME	D112D	TYPE	3681P	
ARM V	180	ARM A	24.5	
FLD V		FLD A		
INSUL	F	AMB.	40	
DUTY	CONT	SUPPLY	K	
BRG/DE	6206	BRG/ODE		
BRUSHES	2/BP5027A01			
		BLANK	IP44	
SER.				
BLANK	IC411 30KG			
APRV-CE	Y	APRV-CSA	Y	APRV-UL Y

Accessories

Part number	Description	Multiplier
TK3600PM	TACHO MOUNTING KIT FOR TK3600PM	A8

DC Motor Performance Data

Record # 312

Typical performance - not guaranteed values

Winding: 36WGZ509-R001		Type: 3681P		Enclosure: TEFC	
Nameplate Data			General Characteristics		
Rated Output (HP)	5	Armature Resistance @ 25°C	0.16 Ω		
R.P.M.	1750	Voltage Constant	91.78 v/krpm		
Armature Volts	180	Armature Inductance	3.677 mH		
Armature Amps	24.5	Armature Inertia	177.0597 LI ²		
Field Volts					
Field Amps					
Rating - Duty	40C AMB-CONT				
Power Supply Code	K				

Load Characteristics at 180 Armature Volts

Load Point	1	2	3	4	5	6	7
Armature Amps	1.1	7.1	12.8	18.4	24.1	29.9	35.99
R.P.M.	1931	1915	1886	1870	1850	1832	1815
Torque (LB-FT)	0	3.8	7.57	11.39	15.18	19	22.81

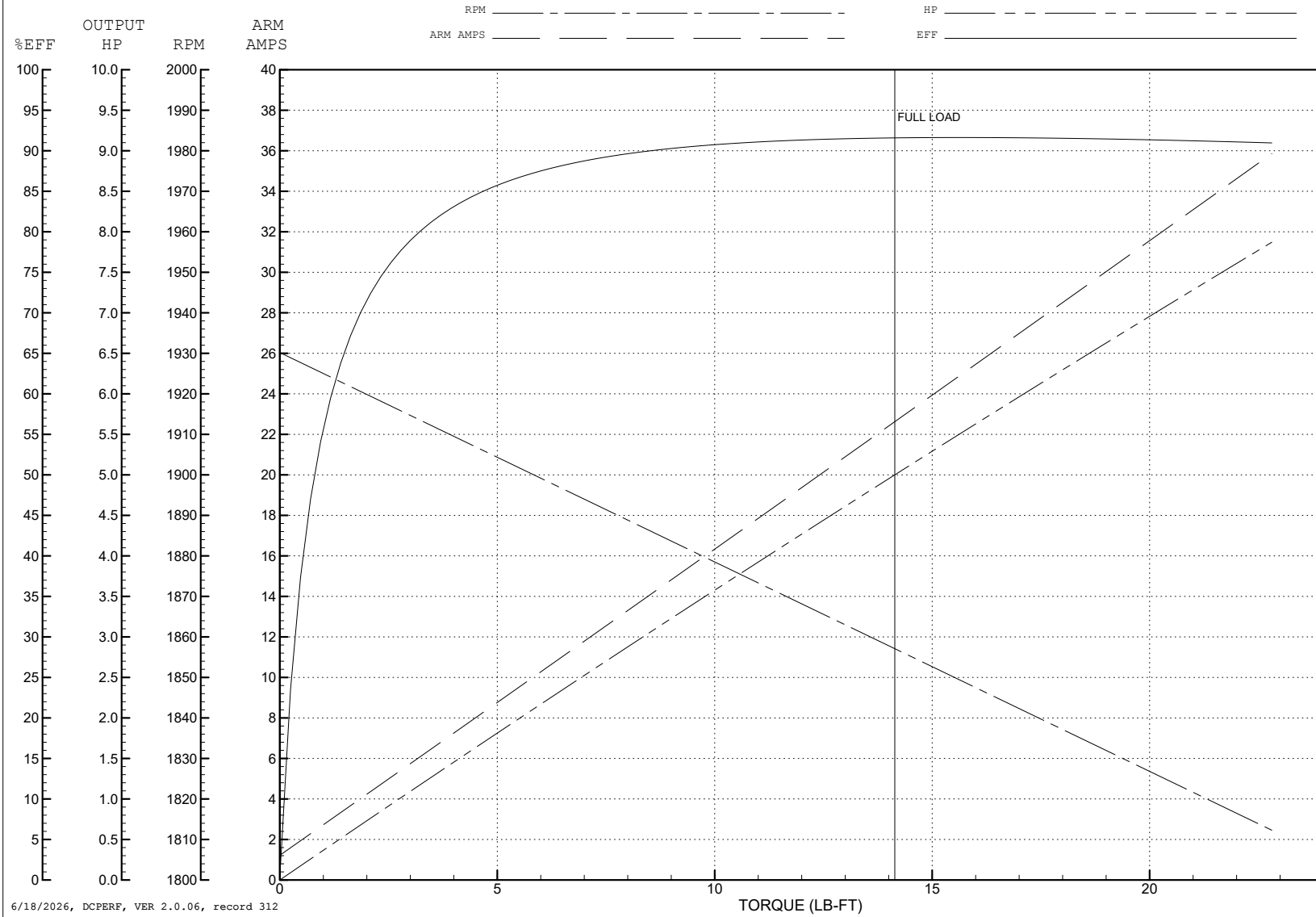
ABB Motors and Mechanical Inc.

WINDING # 36WGZ509

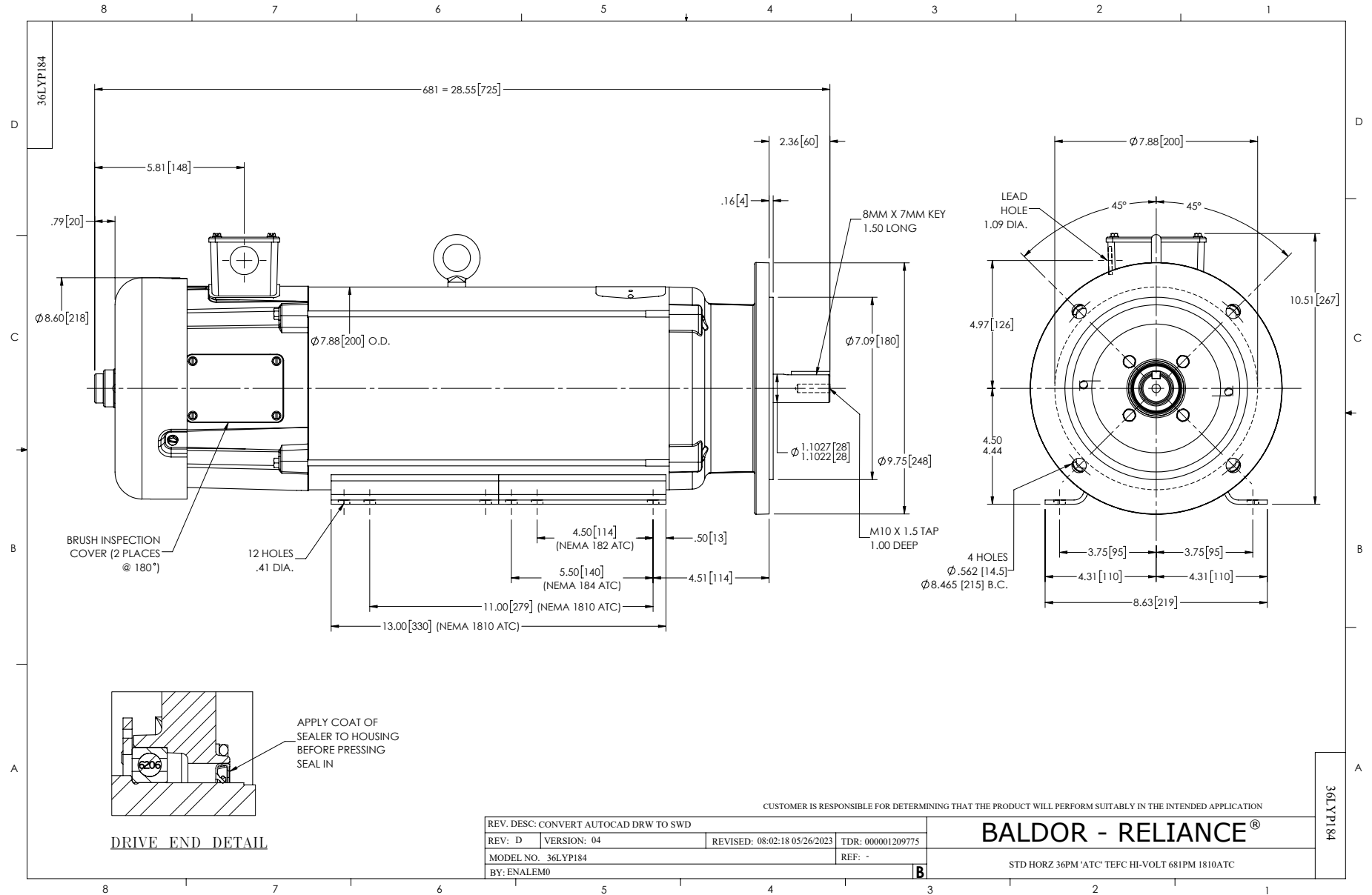
5 HP DC 1750 RPM 180 V 3681P

Typical performance - not guaranteed values.

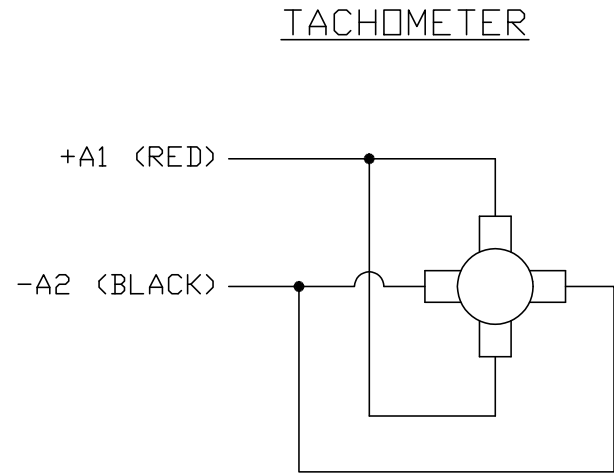
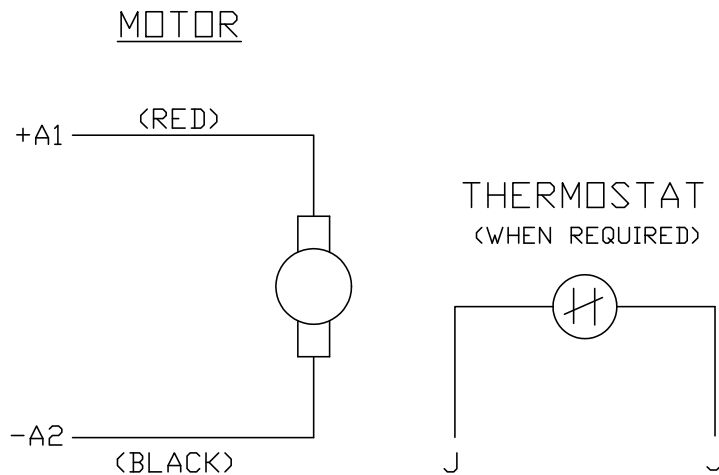
ENCL: TEFC DUTY: CONT CL: F



6/18/2026, DCPERF, VER 2.0.06, record 312



CD0194



NOTES:

1. CCW ROTATION AS SHOWN FACING COMMUTATOR END. TO REVERSE MOTOR ROTATION OR TACHOMETER OUTPUT POLARITY INTERCHANGE LEADS A1(RED) & A2(BLACK)
2. LEAD COLORS FOR REFERENCE ONLY & NOT SPECIFIED BY THIS DRAWING. LEAD COLORS SPECIFIED BY LAYOUT DRAWING & BILL OF MATERIAL ONLY.

MATL: -			
REV: E	ADDED NOTE "LEAD COLORS FOR REFERENCE ONLY &..."		
CD0194	SCALE: -	BY: CK	REVISED: 07/28/95
	FILE: AAA00004503	TDR: 0078737	

BALDOR ELECTRIC Co.

CD TYPE P DC PERMANENT MAGNET MOTORS AND TACHOMETERS

CD0194