

# ABB BALDOR RELIANCE III

---

## Customer information packet

VM7006-I

.5//.33HP, 1740//1450RPM, 3PH, 60//50HZ, 56C

Class - CLI GP C,D

Division - Division I

**Specifications**

<b>Enclosure</b>	XPNV
<b>Frame</b>	56C
<b>Frame Material</b>	Steel
<b>Frequency</b>	50.00 Hz 60.00 Hz
<b>Haz Area Class and Group</b>	CLI GP C,D
<b>Haz Area Division</b>	Division I
<b>Motor Letter Type</b>	Three Phase
<b>Output @ Frequency</b>	.330 HP @ 50 HZ .500 HP @ 60 HZ
<b>Phase</b>	3
<b>Synchronous Speed @ Frequency</b>	1800 RPM @ 60 HZ
<b>Voltage @ Frequency</b>	460.0 V @ 60 HZ 380.0 V @ 50 HZ 230.0 V @ 60 HZ 190.0 V @ 50 HZ
<b>Agency Approvals</b>	CSA UL
<b>Ambient Temperature</b>	40 °C
<b>Auxiliary Box</b>	NO AUXILLARY BOX
<b>Auxiliary Box Lead Termination</b>	None
<b>Base Indicator</b>	No Mounting
<b>Bearing Grease Type</b>	Polyrex EM (-20F +300F)
<b>Blower</b>	None
<b>Current @ Voltage</b>	1.900 A @ 208.0 V 1.800 A @ 230.0 V 1.740 A @ 190.0 V .900 A @ 460.0 V .870 A @ 380.0 V
<b>Design Code</b>	B
<b>Drip Cover</b>	No Drip Cover
<b>Duty Rating</b>	CONT

**Part Detail**

<b>Revision</b>	B
<b>Type</b>	AC
<b>Mech. spec.</b>	35X727
<b>Base</b>	
<b>Status</b>	PRD/A
<b>Elec. spec.</b>	35WGG155
<b>Layout</b>	35LYX727
<b>Eff. date</b>	04-16-2024
<b>CD Diagram</b>	CD0005
<b>Poles</b>	04
<b>Leads</b>	9#18
<b>Proprietary</b>	False
<b>Created date</b>	01-10-2022

<b>Efficiency @ 100% Load</b>	80.0 %
<b>Electrically Isolated Bearing</b>	Not Electrically Isolated
<b>Feedback Device</b>	NO FEEDBACK
<b>Front Shaft Indicator</b>	None
<b>Haz Area Temp Code</b>	T3C
<b>Heater Indicator</b>	No Heater
<b>High Voltage Full Load Amps</b>	0.9 a
<b>Insulation Class</b>	F
<b>Inverter Code</b>	Not Inverter
<b>KVA Code</b>	M
<b>Lifting Lugs</b>	No Lifting Lugs
<b>Locked Bearing Indicator</b>	Locked Bearing
<b>Motor Lead Quantity/Wire Size</b>	9 @ 18 AWG
<b>Motor Lead Termination</b>	Flying Leads
<b>Motor Standards</b>	NEMA
<b>Motor Type</b>	X3512M
<b>Mounting Arrangement</b>	F1
<b>Number of Poles</b>	4
<b>Overall Length</b>	13.14 IN
<b>Power Factor</b>	65
<b>Product Family</b>	Hazardous Location Motor
<b>Pulley End Bearing Type</b>	Ball
<b>Pulley Face Code</b>	C-Face
<b>Pulley Shaft Indicator</b>	Standard
<b>Rodent Screen</b>	None
<b>Service Factor</b>	1.15
<b>Shaft Diameter</b>	0.625 IN
<b>Shaft Ground Indicator</b>	No Shaft Grounding
<b>Shaft Rotation</b>	Reversible
<b>Shaft Slinger Indicator</b>	No Slinger
<b>Speed</b>	1475 rpm 1770 rpm
<b>Speed Code</b>	Single Speed
<b>Starting Method</b>	Direct on line

<b>Thermal Device - Bearing</b>	<b>None</b>
<b>Thermal Device - Winding</b>	<b>Normally Closed Thermostat</b>
<b>Vibration Sensor Indicator</b>	<b>No Vibration Sensor</b>
<b>Winding Thermal 1</b>	<b>None</b>
<b>Winding Thermal 2</b>	<b>None</b>

**Nameplate**

<b>NP0977XPSL</b>										
<b>NO.</b>								<b>CC</b>		
<b>SER.</b>								<b>TEMP CODE</b>	T3C	
<b>SPEC.</b>	35X727G155G1									
<b>CAT.NO.</b>										
<b>HP</b>	.5//.33									
<b>VOLTS</b>	230/460//190/380									
<b>AMPS</b>	1.8/.9//1.74/.87									
<b>RPM</b>	1770//1475					<b>MOTOR WEIGHT</b>				
<b>HERTZ</b>	60//50	<b>PH</b>	3	<b>CL</b>	F	<b>DE BRG</b>	6205			
<b>SER.F.</b>	1.15	<b>DES</b>	B	<b>CODE</b>	M	<b>ODE BRG</b>	6203			
<b>FRAME</b>	56C	<b>GREASE</b>	POLYREX EM							
<b>RATING</b>	40C AMB-CONT									
				<b>NEMA-NOM-EFF</b>			80	<b>PF</b>	65	
	SFA 2/1									

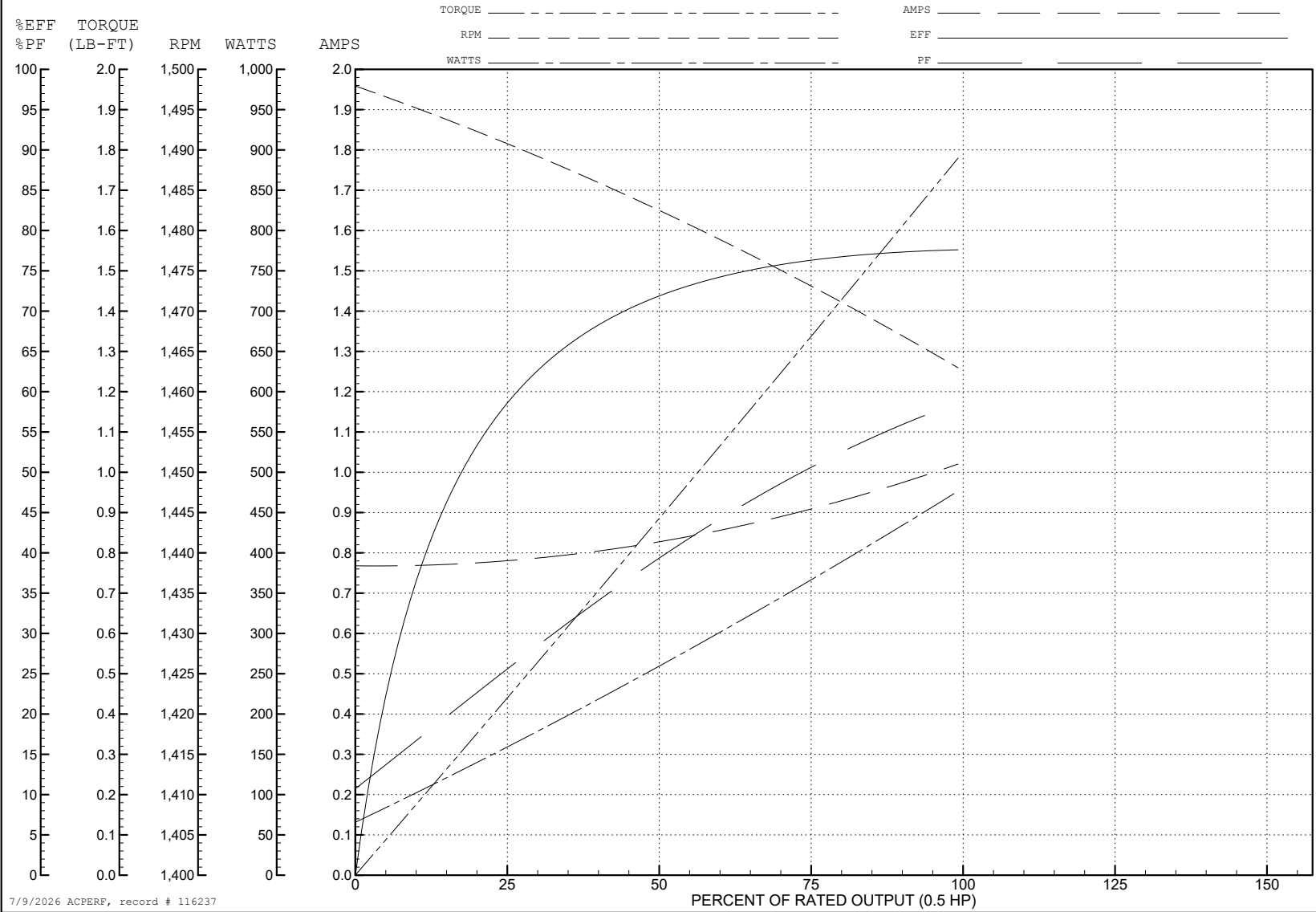
ABB Motors and Mechanical Inc.

WINDING # 35WGG155

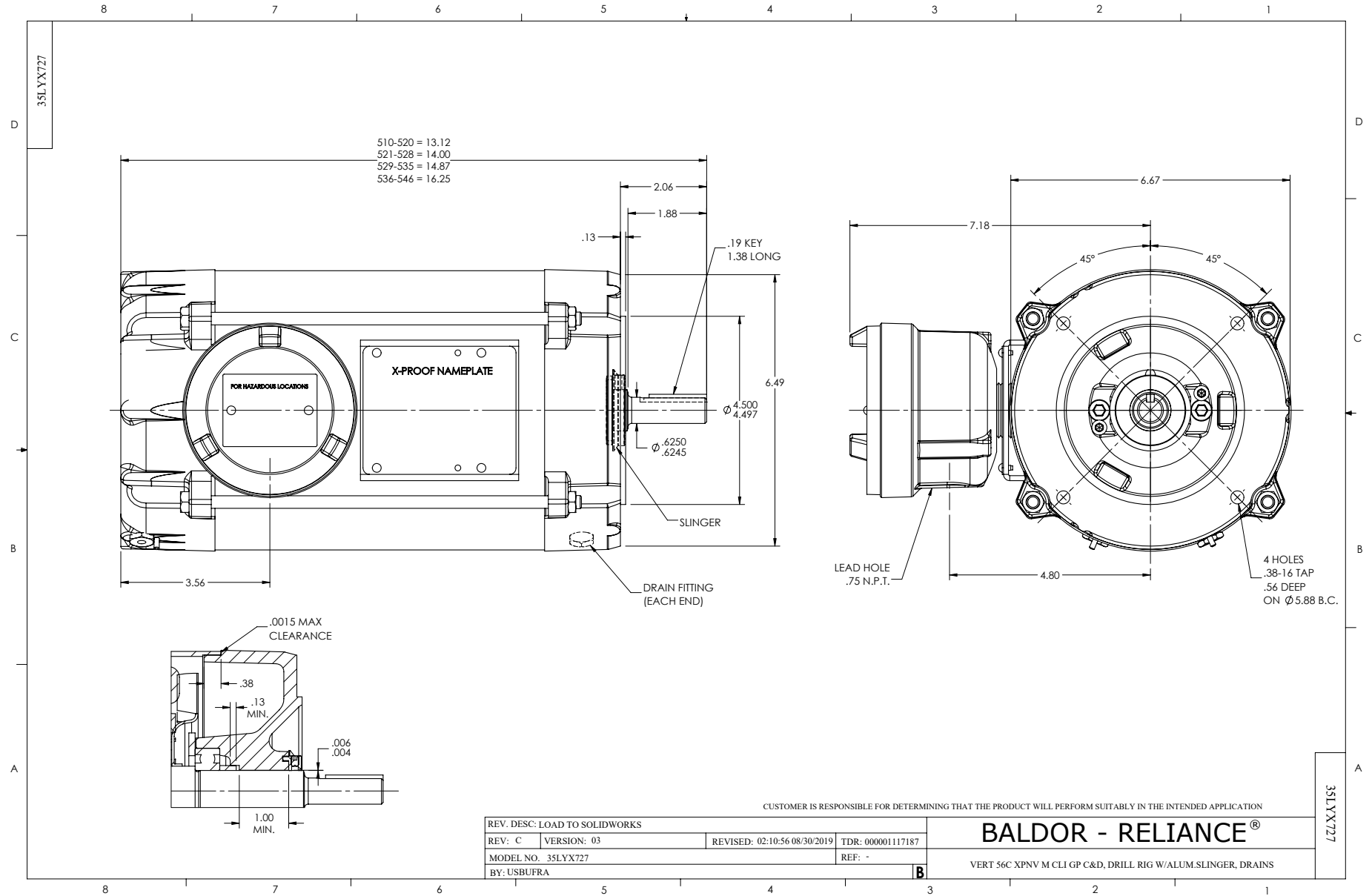
0.5 HP 3 PH 60 HZ 1476 RPM 460 V 3512M

Typical performance - not guaranteed values.

TORQUES (LB-FT): PO=5.5 PU=3 LR=3.7 LRA=6.1



7/9/2026 ACPERF, record # 116237



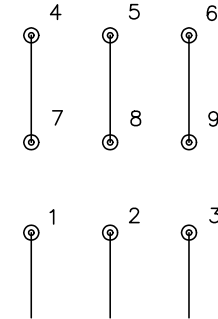
CD0005



LOW VOLTAGE  
(2Y)



HIGH VOLTAGE  
(1Y)



NOTES:

1. INTERCHANGE ANY TWO LINE LEADS TO REVERSE ROTATION.
2. OPTIONAL THERMOSTATS ARE PROVIDED WHEN SPECIFIED.
3. ACTUAL NUMBER OF INTERNAL PARALLEL CIRCUITS MAY BE A MULTIPLE OF THOSE SHOWN ABOVE.
4. LEAD COLORS ARE OPTIONAL. LEADS MUST ALWAYS BE NUMBERED AS SHOWN.

CD0005

REV. DESC: REVISE TO SHOW OPTIONAL COLORS

REV. LTR: E BY: JLP REVISED: 01/19/99 10:15 TDR: 0171435

900000

FILE: AAA00005140

MDL: -

MTL: -

**BALDOR ELECTRIC Co.**

3PH, DV, 9 LEADS