

**BALDOR • RELIANCE**

---

# Customer information packet

## VM3557T

1.5HP, 1150RPM, 3PH, 60HZ, 145TC, 3546M, TEFC

Class - None

Division - Not Applicable

## Specifications

Enclosure	TEFC
Frame	145TC
Frame Material	Steel
Frequency	60.00 Hz
Motor Letter Type	Three Phase
Output @ Frequency	1.500 HP @ 60 HZ
Phase	3
Synchronous Speed @ Frequency	1200 RPM @ 60 HZ
Voltage @ Frequency	460.0 V @ 60 HZ 230.0 V @ 60 HZ 208.0 V @ 60 HZ
XP Class and Group	None
XP Division	Not Applicable
Agency Approvals	CSA UR
Ambient Temperature	40 °C
Auxillary Box	No Auxillary Box
Auxillary Box Lead Termination	None
Base Indicator	No Mounting
Bearing Grease Type	Polyrex EM (-20F +300F)
Blower	None
Current @ Voltage	5.400 A @ 230.0 V 5.400 A @ 208.0 V 2.700 A @ 460.0 V
Design Code	B
Drip Cover	No Drip Cover
Duty Rating	CONT
Efficiency @ 100% Load	85.5 %
Electrically Isolated Bearing	Not Electrically Isolated
Feedback Device	NO FEEDBACK
Front Face Code	Standard
Front Shaft Indicator	None

## Part detail

Revision	M
Type	AC
Mech. spec.	35A003
Base	
Status	NLA/A
Elec. spec.	35WGM319
Layout	35LYA003
Eff. date	03-08-2016
CD Diagram	CD0005
Poles	06
Leads	9#18
Proprietary	False
Created date	06-08-2010

Heater Indicator	No Heater
High Voltage Full Load Amps	2.7 a
Insulation Class	F
Inverter Code	Not Inverter
KVA Code	M
Lifting Lugs	No Lifting Lugs
Locked Bearing Indicator	Locked Bearing
Motor Lead Exit	Ko Box
Motor Lead Quantity/Wire Size	9 @ 18 AWG
Motor Lead Termination	Flying Leads
Motor Standards	NEMA
Motor Type	3546M
Mounting Arrangement	F1
Number of Poles	6
Overall Length	15.56 IN
Power Factor	61
Product Family	General Purpose
Pulley End Bearing Type	Ball
Pulley Face Code	C-Face
Pulley Shaft Indicator	Standard
Rodent Screen	None
Service Factor	1.15
Shaft Diameter	0.875 IN
Shaft Extension Location	Pulley End
Shaft Ground Indicator	No Shaft Grounding
Shaft Rotation	Reversible
Shaft Slinger Indicator	No Slinger
Speed	1150 rpm
Speed Code	Single Speed
Starting Method	Direct on line
Thermal Device - Bearing	None
Thermal Device - Winding	None
Vibration Sensor Indicator	No Vibration Sensor
Winding Thermal 1	None

**Winding Thermal 2**

**None**

---

**Nameplate**

<b>NP1256L</b>									
<b>CAT.NO.</b>	VM3557T								
<b>SPEC.</b>	35A003M319H1								
<b>HP</b>	1.5								
<b>VOLTS</b>	208-230/460								
<b>AMP</b>	5.4/2.7								
<b>RPM</b>	1150								
<b>FRAME</b>	145TC		<b>HZ</b>	60		<b>PH</b>	3		
<b>SER.F.</b>	1.15	<b>CODE</b>	M	<b>DES</b>	B	<b>CLASS</b>	F		
<b>NEMA-NOM-EFF</b>	85.5	<b>PF</b>	61						
<b>RATING</b>	40C AMB-CONT								
<b>CC</b>	010A		<b>USABLE AT 208V</b>				N/A		
<b>DE</b>	6205		<b>ODE</b>	6203					
<b>ENCL</b>	TEFC	<b>SN</b>							

**AC Induction Motor Performance Data**

Record # 29256

Typical performance - not guaranteed values

Winding: 35WGM319-R001		Type: 3546M		Enclosure: TEFC	
<b>Nameplate Data</b>			<b>460 V, 60 Hz: High Voltage Connection</b>		
Rated Output (HP)	1.5	Full Load Torque	6.78 LB-FT		
Volts	208-230/460	Start Configuration	direct on line		
Full Load Amps	5.4/2.7	Breakdown Torque	29.5 LB-FT		
R.P.M.	1150	Pull-up Torque	21.8 LB-FT		
Hz	60 Phase	3	Locked-rotor Torque	24.1 LB-FT	
NEMA Design Code	B	KVA Code	M	Starting Current	20.2 A
Service Factor (S.F.)	1.15	No-load Current	1.89 A		
NEMA Nom. Eff.	85.5	Power Factor	61	Line-line Res. @ 25°C	7.2608 Ω
Rating - Duty	40C	AMB-CONT	Temp. Rise @ Rated Load	47°C	
S.F. Amps			Temp. Rise @ S.F. Load	55°C	
			Locked-rotor Power Factor	36	
			Rotor inertia	0.274 LB-FT <sup>2</sup>	

**Load Characteristics 460 V, 60 Hz, 1.5 HP**

% of Rated Load	25	50	75	100	125	150	S.F.
Power Factor	25	41	53	61	67	18	65
Efficiency	72.5	82.1	84.9	85.6	85.3	84.2	85.4
Speed	1191.6	1183.2	1174.6	1164.9	1154.2	1142.8	1158
Line amperes	1.95	2.11	2.36	2.68	3.05	3.49	2.9

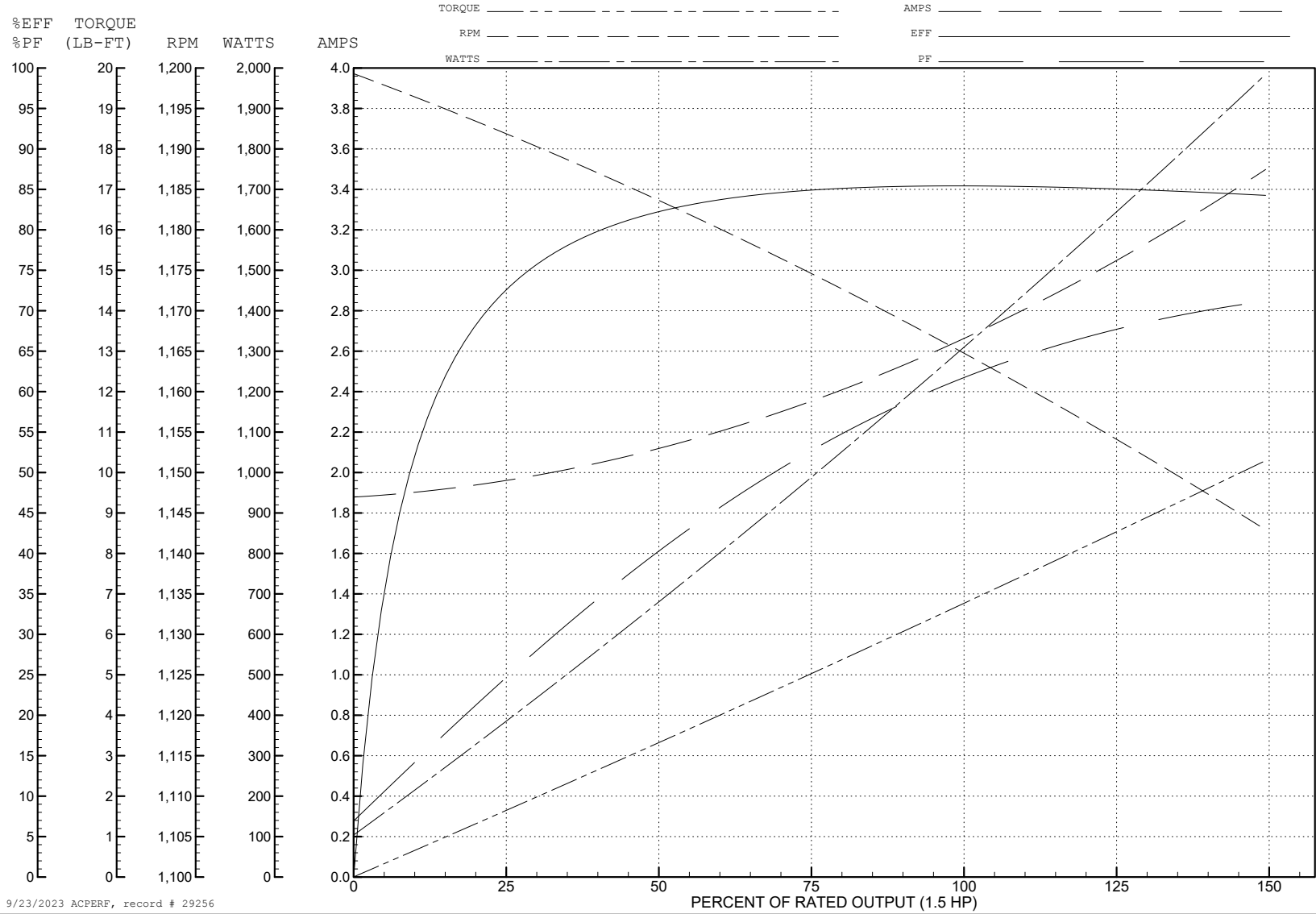
ABB Motors and Mechanical Inc.

WINDING # 35WGM319

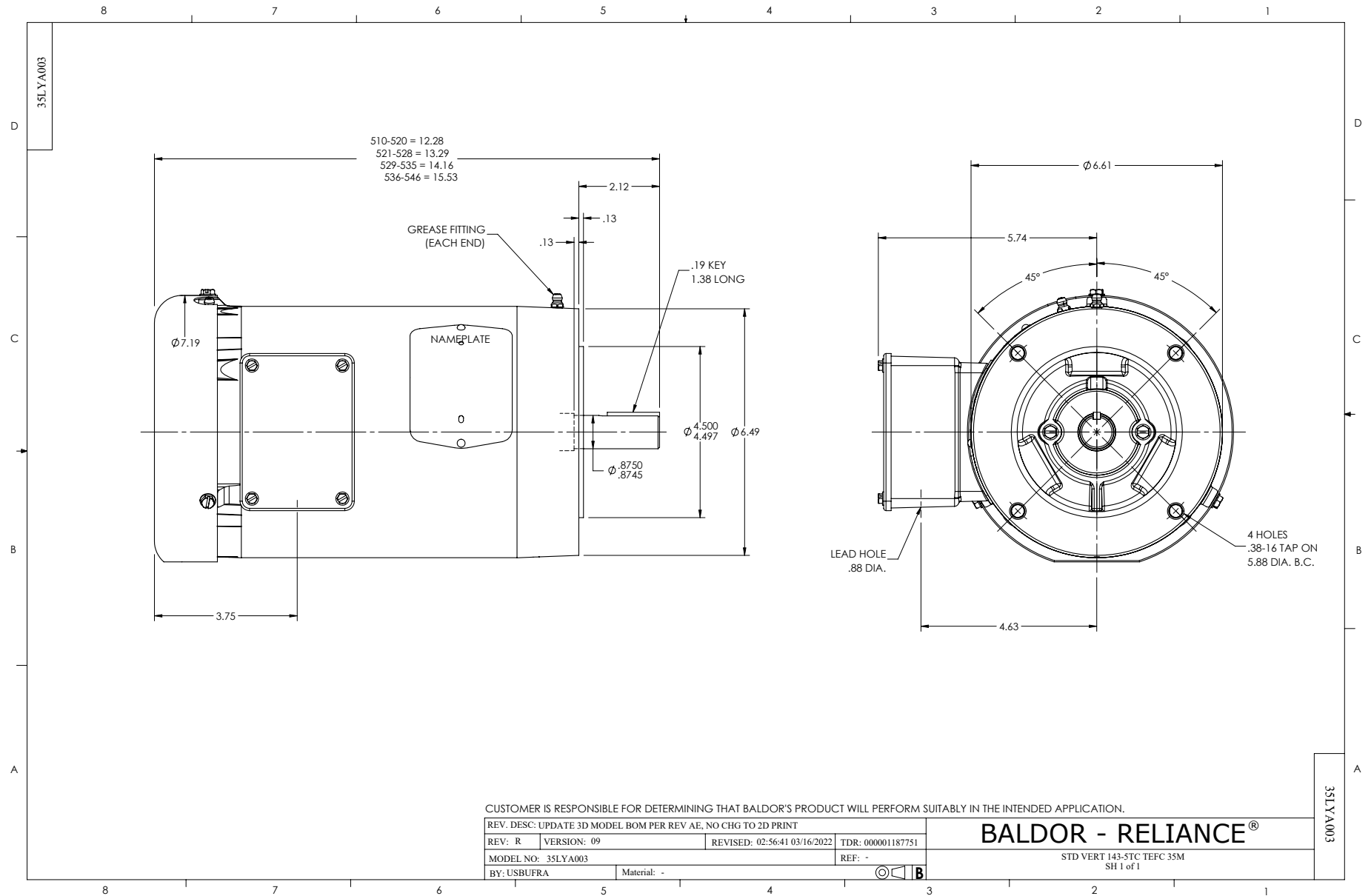
Typical performance - not guaranteed values.

1.5 HP 3 PH 60 HZ 1150 RPM 460 V 3546M

TORQUES (LB-FT): PO=29.5 PU=21.8 LR=24.1 LRA=20.2

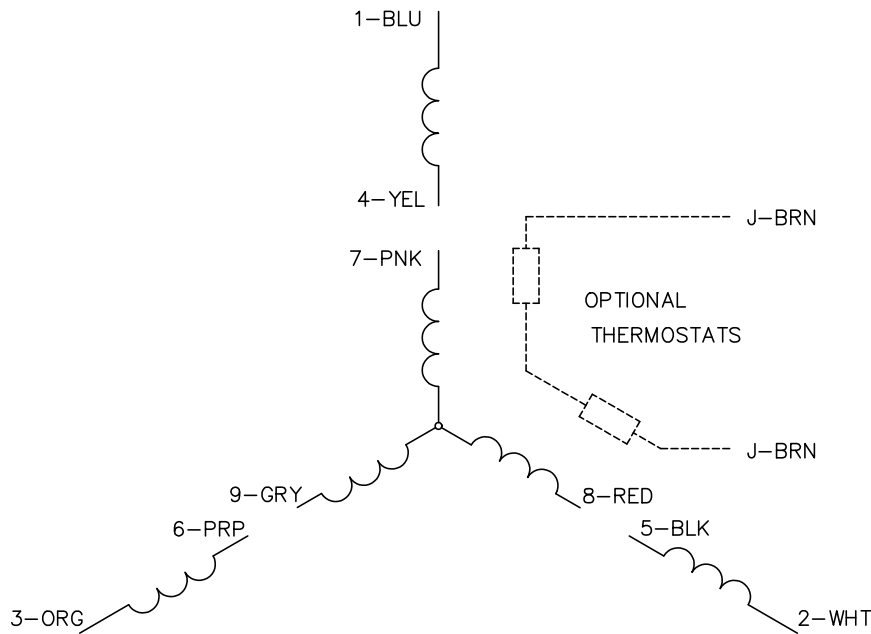


9/23/2023 ACPERF, record # 29256

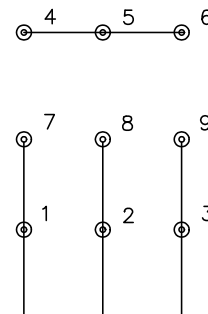




CD0005

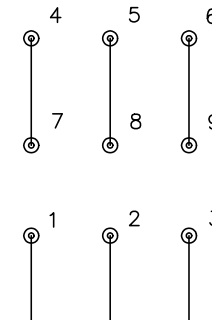


LOW VOLTAGE  
(2Y)



LINE

HIGH VOLTAGE  
(1Y)



LINE

NOTES:

1. INTERCHANGE ANY TWO LINE LEADS TO REVERSE ROTATION.
2. OPTIONAL THERMOSTATS ARE PROVIDED WHEN SPECIFIED.
3. ACTUAL NUMBER OF INTERNAL PARALLEL CIRCUITS MAY BE A MULTIPLE OF THOSE SHOWN ABOVE.
4. LEAD COLORS ARE OPTIONAL. LEADS MUST ALWAYS BE NUMBERED AS SHOWN.

REV. DESC: REVISE TO SHOW OPTIONAL COLORS			
REV. LTR: E	BY: JLP	REVISED: 01/19/99 10:15	TDR: 0171435
S00000		FILE: AAA00005140	MDL: -
		MTL: -	

**BALDOR ELECTRIC Co.**

3PH, DV, 9 LEADS

CD0005