

ABB BALDOR RELIANCE III

Customer information packet

VLECP84110T-4

40HP, 1770RPM, 3PH, 60HZ, 324LP, 1260M, TEFC, V

Class - CLI GP A,B,C,D

Division - Division II

Specifications

Enclosure	TEFC
Frame	324LP
Frame Material	Iron
Frequency	60.00 Hz
Haz Area Class and Group	CLI GP A,B,C,D
Haz Area Division	Division II
Motor Letter Type	Three Phase
Output @ Frequency	40.000 HP @ 60 HZ
Phase	3
Synchronous Speed @ Frequency	1800 RPM @ 60 HZ
Voltage @ Frequency	460.0 V @ 60 HZ
Agency Approvals	CCSA US CSA EEV UR
Ambient Temperature	40 °C
Auxiliary Box	NO AUXILLARY BOX
Auxiliary Box Lead Termination	None
Base Indicator	No Mounting
Bearing Grease Type	Polyrex EM (-20F +300F)
Blower	None
Constant Torque Speed Range	1
Current @ Voltage	46.000 A @ 460.0 V
Design Code	B
Drip Cover	Drip Cover
Duty Rating	CONT
Efficiency @ 100% Load	94.1 %
Electrically Isolated Bearing	Not Electrically Isolated
Enclosure Modification	841
Feedback Device	NO FEEDBACK
Front Face Code	Standard
Front Shaft Indicator	None
Haz Area Temp Code	T3

Part Detail

Revision	N
Type	AC
Mech. spec.	12H444
Base	
Status	PRD/A
Elec. spec.	12WGY762
Layout	12LYH444
Eff. date	10-16-2025
CD Diagram	CD0006
Poles	04
Leads	3#8
Proprietary	False
Created date	05-13-2016

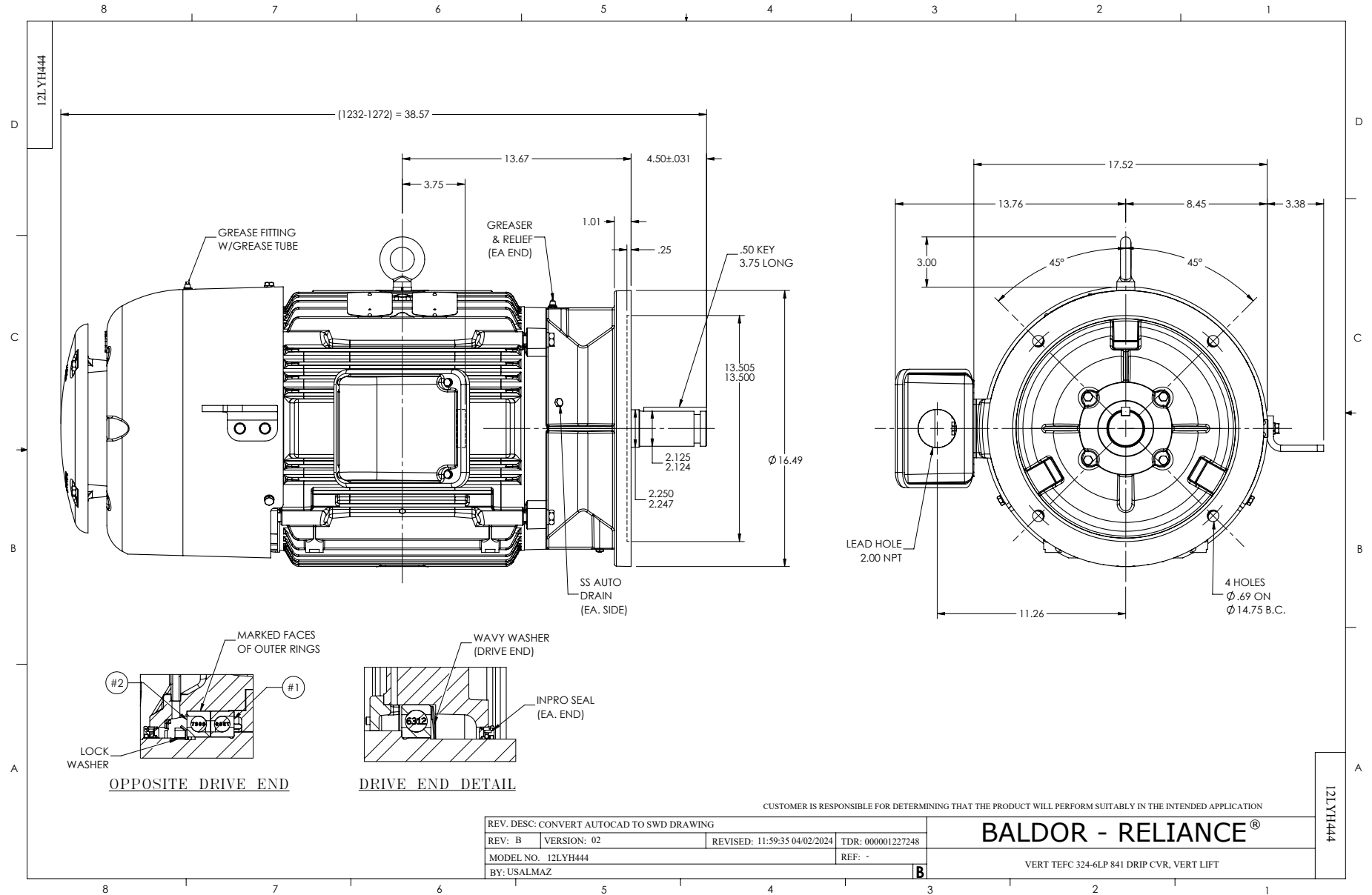
Heater Indicator	No Heater
High Voltage Full Load Amps	46.0 a
Insulation Class	F
Inverter Code	Inverter Duty
IP Rating	IP56
KVA Code	F
Lifting Lugs	Vertical Lifting Lugs
Locked Bearing Indicator	Locked Bearing
Max Speed	2700 rpm
Motor Lead Exit	Ko Box
Motor Lead Quantity/Wire Size	3 @ 8 AWG
Motor Lead Termination	Ring Terminals
Motor Standards	NEMA
Motor Type	1260M
Mounting Arrangement	V1
Number of Poles	4
Overall Length	38.56 IN
Power Factor	86
Product Family	Chem Process S/P 32-8 IEEE 841
Pulley End Bearing Type	Ball
Pulley Face Code	P-Base
Pulley Shaft Indicator	P-Base Groove & Key
Rodent Screen	None
Service Factor	1.15
Shaft Diameter	2.125 IN
Shaft Extension Location	Pulley End
Shaft Ground Indicator	No Shaft Grounding
Shaft Rotation	Reversible
Shaft Slinger Indicator	No Slinger
Speed	1770 rpm
Speed Code	Single Speed
Starting Method	Direct on line
Thermal Device - Bearing	NONE (OLD)
Thermal Device - Winding	None

Vibration Sensor Indicator	No Vibration Sensor
Winding Thermal 1	None
Winding Thermal 2	None

Nameplate

NP4332

CAT.NO.	VLECP84110T-4	P/N		ENCLOSURE	TEFC
SPEC.	12H444Y762G3	CC	010A	FRAME	324LP
HP	40	CLASS	F	HZ	60
RPM	1770	RPM MAX	2700	ODE BRG	7309
VOLT	460	PH	3	DE BRG	6312
AMP	46	DES	B	D.E. BRG.	60BC03X30X
RATING	40C AMB-CONT	PH	3	O.D.E. BRG.	45BT03X30X
NEMA-NOM-EFF	94.1	KVA-CODE	G	MOTOR WEIGHT	741
G.MIN.EFF	93	O.D.E. BRG.		GREASE	POLYREX EM
TEMP CODE	T3	MAX. KVAR	8.3	BLANK	
TEMP =	200	SER.F.	1.15	IP	56
CT HZ FROM	1	# OF ROTOR BARS	40	INV.TYPE	PWM
HTR-VOLTS		# OF STATOR SLOTS	48	PF	86
HTR-AMPS		INVERTER-TEMP-CODE	200	C HP FR	60
HTR-WATTS		C HP TO	90	CT HZ TO	60
MAX. SPACE HEATER TEMP.		VT HZ FROM	<input type="radio"/>	VT HZ TO	60



CD0006



NOTES:

1. THREE LEAD MOTOR MAY BE EITHER WYE CONNECTED OR DELTA CONNECTED.
2. INTERCHANGE ANY TWO LINE LEADS TO REVERSE ROTATION.
3. OPTIONAL THERMOSTATS ARE PROVIDED WHEN SPECIFIED.
4. ACTUAL NUMBER OF INTERNAL PARALLEL CIRCUITS MAY VARY.
5. LEAD COLORS ARE OPTIONAL. LEADS MUST BE NUMBERED AS SHOWN.

CD0006

REV. DESC: ADD CLASS CONN00000007		
REV. LTR: E	VERSION: 01	TDR: 000001099922
FILE: \AAA\00005\141	REVISED: 10:24:49 02/19/2019	BY: ENBRIRO
MTL: -		© □

BALDOR - RELIANCE®

3PH, SV, 3 LEADS, WYE OR DELTA CONNECTED

SH 1 of 1