

**Specifications**

<b>Enclosure</b>	TEFC
<b>Frame</b>	184LP
<b>Frame Material</b>	Iron
<b>Frequency</b>	60.00 Hz
<b>Haz Area Class and Group</b>	CLI GP A,B,C,D
<b>Haz Area Division</b>	Division II
<b>Motor Letter Type</b>	Three Phase
<b>Output @ Frequency</b>	5.000 HP @ 60 HZ
<b>Phase</b>	3
<b>Synchronous Speed @ Frequency</b>	3600 RPM @ 60 HZ
<b>Voltage @ Frequency</b>	460.0 V @ 60 HZ
<b>Agency Approvals</b>	CSA EEV NEMA PREMIUM UR CSA
<b>Ambient Temperature</b>	40 °C
<b>Auxillary Box</b>	No Auxillary Box
<b>Auxillary Box Lead Termination</b>	None
<b>Base Indicator</b>	No Mounting
<b>Bearing Grease Type</b>	Polyrex EM (-20F +300F)
<b>Blower</b>	None
<b>Constant Torque Speed Range</b>	6
<b>Current @ Voltage</b>	5.700 A @ 460.0 V
<b>Design Code</b>	B
<b>Drip Cover</b>	Drip Cover
<b>Duty Rating</b>	CONT
<b>Efficiency @ 100% Load</b>	88.5 %
<b>Electrically Isolated Bearing</b>	Not Electrically Isolated
<b>Enclosure Modification</b>	841
<b>Feedback Device</b>	NO FEEDBACK
<b>Front Shaft Indicator</b>	None
<b>Haz Area Temp Code</b>	T3

**Part detail**

<b>Revision</b>	J
<b>Type</b>	AC
<b>Mech. spec.</b>	06J487
<b>Base</b>	
<b>Status</b>	PRD/A
<b>Elec. spec.</b>	06WGX822
<b>Layout</b>	06LYJ487
<b>Eff. date</b>	01-11-2024
<b>CD Diagram</b>	CD0006
<b>Poles</b>	02
<b>Leads</b>	3#16
<b>Proprietary</b>	False
<b>Created date</b>	03-27-2019

Heater Indicator	No Heater
High Voltage Full Load Amps	5.7 a
Insulation Class	F
Inverter Code	Inverter Duty
IP Rating	IP56
KVA Code	J
Lifting Lugs	Vertical Lifting Lugs
Locked Bearing Indicator	Locked Bearing
Max Speed	5400 rpm
Motor Lead Quantity/Wire Size	3 @ 16 AWG
Motor Lead Termination	Flying Leads
Motor Standards	NEMA
Motor Type	0642M
Mounting Arrangement	W6
Number of Poles	2
Overall Length	22.68 IN
Power Factor	94
Product Family	Chem Process S/P 32-8 IEEE 841
Pulley End Bearing Type	Ball
Pulley Face Code	P-Base
Pulley Shaft Indicator	P-Base Groove & Key
Rodent Screen	None
Service Factor	1.15
Shaft Diameter	1.125 IN
Shaft Ground Indicator	No Shaft Grounding
Shaft Rotation	Reversible
Shaft Slinger Indicator	No Slinger
Speed	3440 rpm
Speed Code	Single Speed
Starting Method	Direct on line
Thermal Device - Winding	None
Vibration Sensor Indicator	No Vibration Sensor
Winding Thermal 1	None
Winding Thermal 2	None

**Nameplate**

<b>NP4328</b>									
<b>CAT.NO.</b>	VLECP83663T-4								
<b>SPEC.</b>	06J487X822G1								
<b>HP</b>	5 TE	<b>IP</b>	56						
<b>VOLTS</b>	460								
<b>AMPS</b>	5.7								
<b>R.P.M.</b>	3440								
<b>FRAME</b>	184LP	<b>HZ</b>	60	<b>PH</b>	3				
<b>SER.F.</b>	1.15	<b>CODE</b>	J	<b>DES.</b>	B	<b>CLASS</b>	F		
<b>RATING</b>	40C AMB-CONT								
<b>SN</b>									
<b>DE</b>	6307	<b>ODE</b>	7305						
<b>NEMA NOM. EFF.</b>	88.5	<b>P.F.</b>	94						
<b>GUAR. MIN. EFF.</b>	86.5	<b>CC</b>	010A						
<b>T. CODE</b>	T3	<b>TEMP=</b>	160						

**NP3186**

<b>SPEC.</b>	06J487X822G1		
<b>ABMA DE BRG</b>	35BC03X30X		
<b>ABMA ODE BRG</b>	25BC03X30X		
<b>GREASE</b>	POLYREX EM		
<b>MOTOR WEIGHT</b>	123	<b>ROTOR BARS</b>	28
		<b>STATOR BARS</b>	36
<b>MAX. R.P.M.</b>	5400	<b>MAX. KVAR</b>	0.15
<b>INV.TYPE</b>	PWM		
<b>T=</b>	160		
<b>CHP</b>	60	<b>TO</b>	90
<b>CT</b>	6	<b>TO</b>	60
<b>VT</b>	3	<b>TO</b>	60
<b>HTR-VOLTS</b>	N/A	<b>HTR-AMPS</b>	N/A
<b>HTR-WATTS</b>	N/A	<b>MAX. SPACE HEATER TEMP.</b>	N/A

**AC Induction Motor Performance Data**

Record # 59642

Typical performance - not guaranteed values

Winding: 06WGX822-R001		Type: 0642M	Enclosure: TEFC	
<b>Nameplate Data</b>			<b>460 V, 60 Hz: Single Voltage Motor</b>	
Rated Output (HP)	5	Full Load Torque	7.76 LB-FT	
Volts	460	Start Configuration	direct on line	
Full Load Amps	5.7	Breakdown Torque	33.5 LB-FT	
R.P.M.	3440	Pull-up Torque	13.4 LB-FT	
Hz	60 Phase	Locked-rotor Torque	22.9 LB-FT	
NEMA Design Code	B KVA Code	Starting Current	45.4 A	
Service Factor (S.F.)	1.15	No-load Current	1.07 A	
NEMA Nom. Eff.	88.5 Power Factor	Line-line Res. @ 25°C	2.61 Ω	
Rating - Duty	40C AMB-CONT	Temp. Rise @ Rated Load	51°C	
S.F. Amps		Temp. Rise @ S.F. Load	65°C	
		Locked-rotor Power Factor	41.5	
		Rotor inertia	0.188 lb-ft <sup>2</sup>	

**Load Characteristics 460 V, 60 Hz, 5 HP**

% of Rated Load	25	50	75	100	125	150	S.F.
Power Factor	78	90	93	94	93	97	93
Efficiency	90	92	90	89	86	84	87.4
Speed	3559	3523	3481	3439	3384	3327	3406
Line amperes	1.8	2.92	4.25	5.68	7.33	8.75	6.67

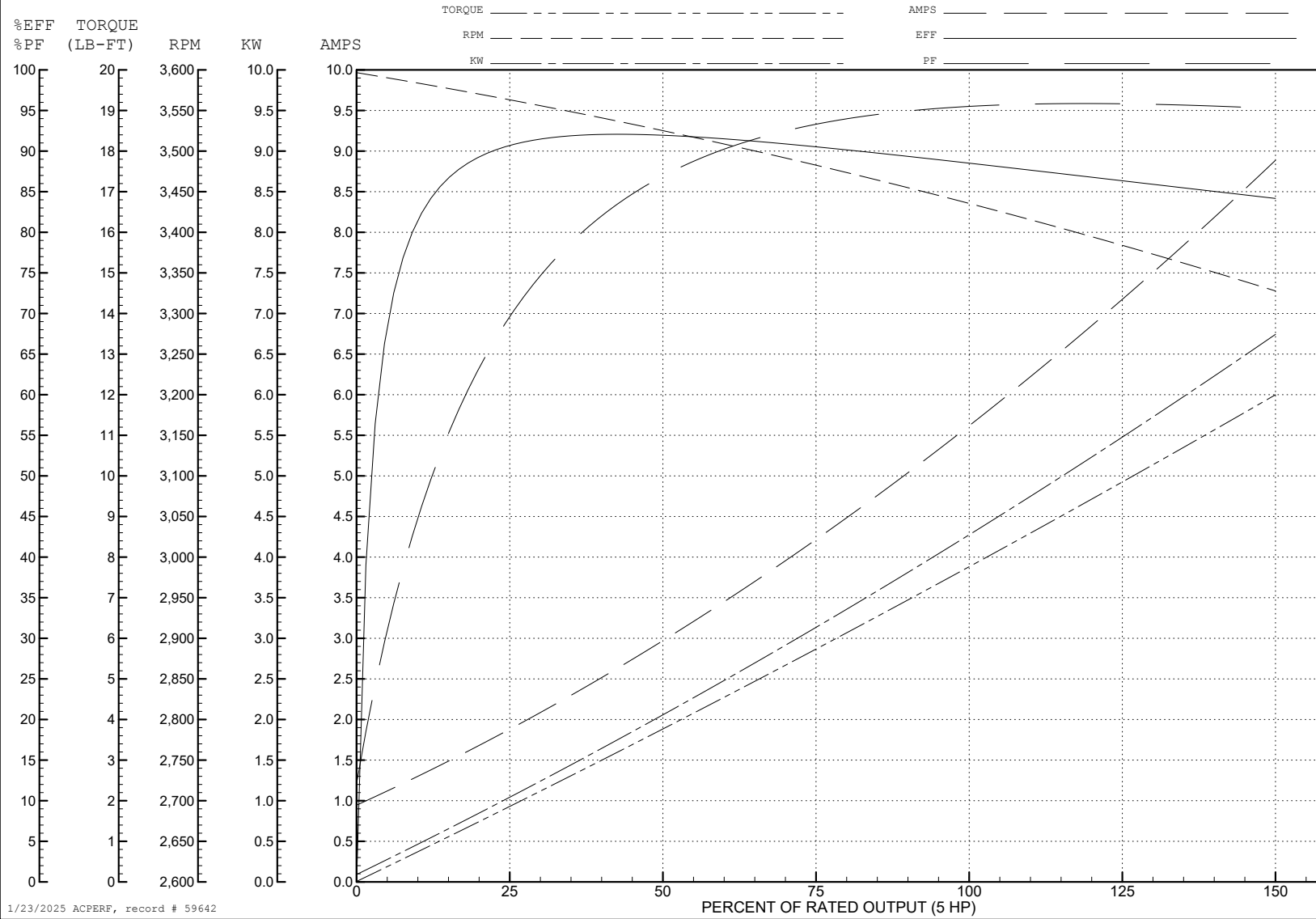
ABB Motors and Mechanical Inc.

WINDING # 06WGX822

5 HP 3 PH 60 HZ 3440 RPM 460 V 0642M

Typical performance - not guaranteed values.

TORQUES (LB-FT): PO=33.5 PU=13.4 LR=22.9 LRA=45.4



1/23/2025 ACPERF, record # 59642

**AC Induction Motor Performance Data**

Record # 59648

Typical performance - not guaranteed values

<b>Winding: 06WGX822-R001</b>		<b>Type: 0642M</b>		<b>Enclosure: TEFC</b>	
<b>Nameplate Data</b>			<b>368 V, 60 Hz: Single Voltage Motor</b>		
<b>Rated Output (HP)</b>	5	<b>Full Load Torque</b>	7.99 LB-FT		
<b>Volts</b>	460	<b>Start Configuration</b>	direct on line		
<b>Full Load Amps</b>	5.7	<b>Breakdown Torque</b>	21.34 LB-FT		
<b>R.P.M.</b>	3440	<b>Pull-up Torque</b>	8.58 LB-FT		
<b>Hz</b>	60 <b>Phase</b>	3	<b>Locked-rotor Torque</b>	14.61 LB-FT	
<b>NEMA Design Code</b>	<b>B KVA Code</b>	J	<b>Starting Current</b>	36.32 A	
<b>Service Factor (S.F.)</b>		1.15	<b>No-load Current</b>	0.871 A	
<b>NEMA Nom. Eff.</b>	88.5 <b>Power Factor</b>	94	<b>Line-line Res. @ 25°C</b>	2.61 Ω	
<b>Rating - Duty</b>	40C AMB-CONT		<b>Temp. Rise @ Rated Load</b>	62°C	
<b>S.F. Amps</b>			<b>Temp. Rise @ S.F. Load</b>	86°C	
			<b>Locked-rotor Power Factor</b>	41.5	
			<b>Rotor inertia</b>	0.188 lb-ft <sup>2</sup>	

**Load Characteristics 368 V, 60 Hz, 5 HP**

<b>% of Rated Load</b>	<b>25</b>	<b>50</b>	<b>75</b>	<b>100</b>	<b>125</b>	<b>150</b>	<b>S.F.</b>
<b>Power Factor</b>	88	93	94	94	91	90	92
<b>Efficiency</b>	91.7	91	88.4	85.1	80.5	73.9	82.6
<b>Speed</b>	3539	3483	3415	3339	3233	3065	3277
<b>Line amperes</b>	1.98	3.54	5.38	7.46	10.11	13.35	9.04

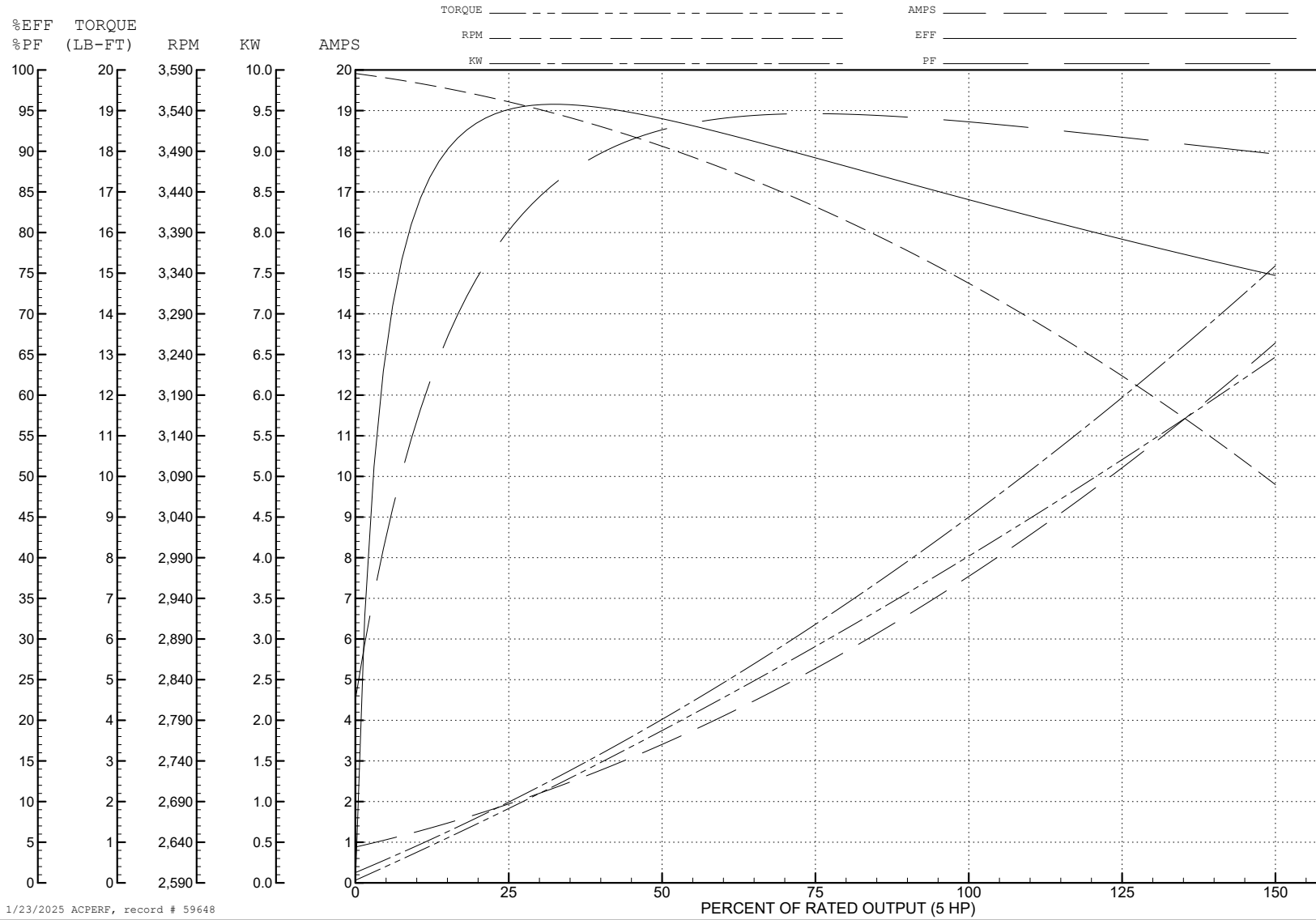
ABB Motors and Mechanical Inc.

WINDING # 06WGX822

Typical performance - not guaranteed values.

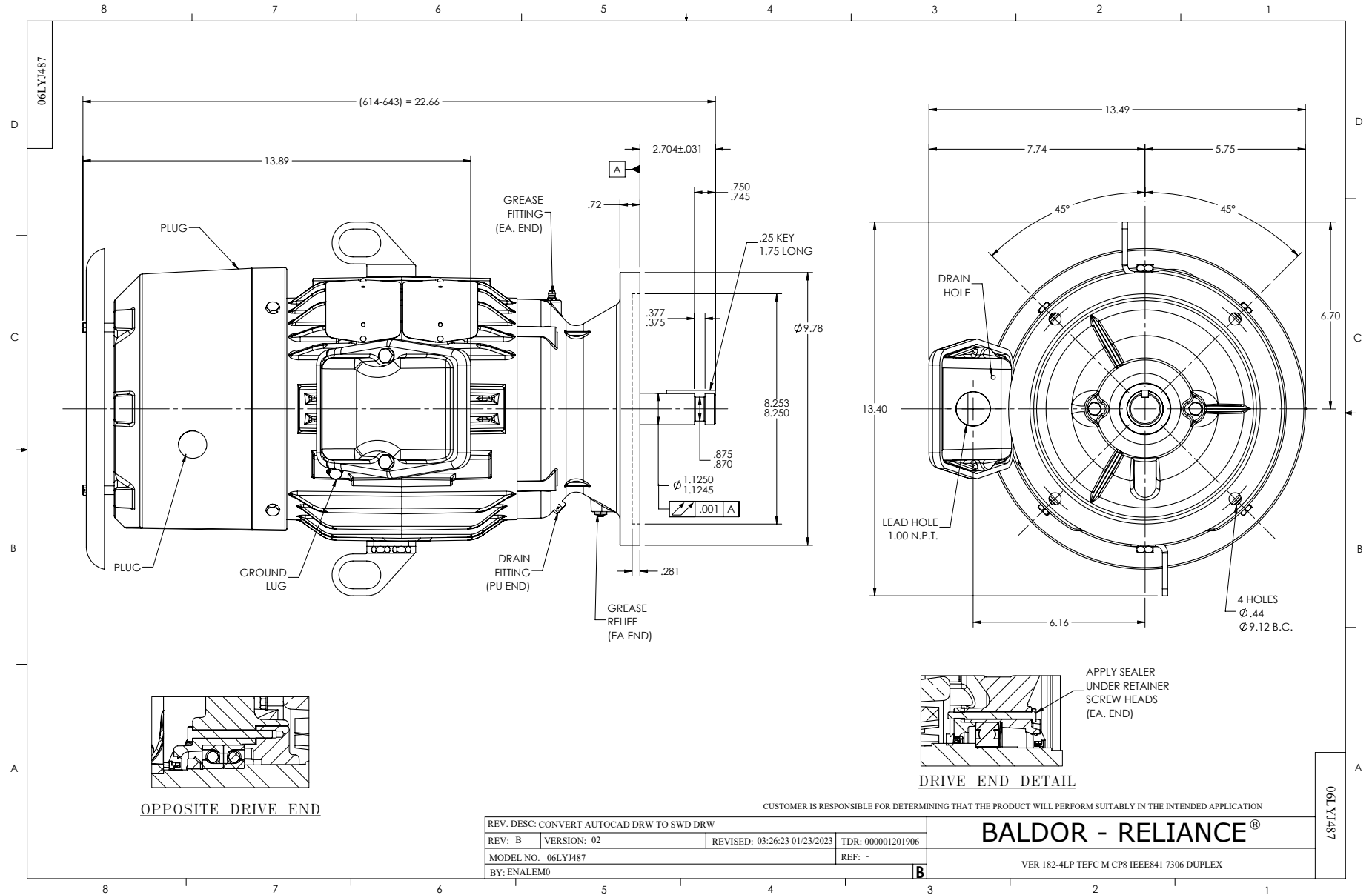
5 HP 3 PH 60 HZ 3440 RPM 368 V 0642M

TORQUES (LB-FT): PO=21.34 PU=8.58 LR=14.61 LRA=36.32

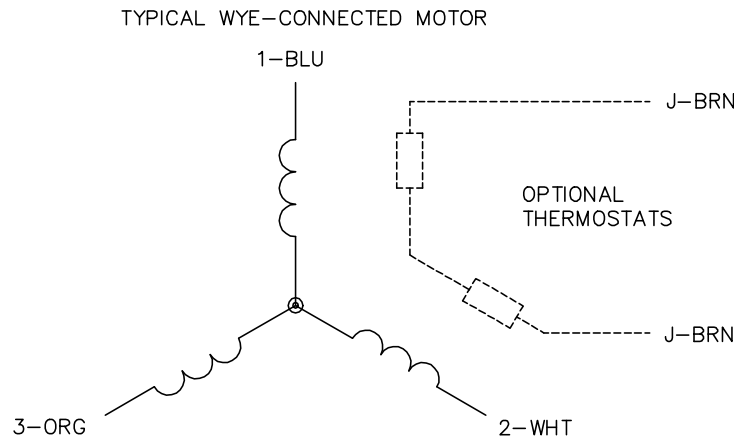


1/23/2025 ACPERF, record # 59648





CD0006



NOTES:

1. THREE LEAD MOTOR MAY BE EITHER WYE CONNECTED OR DELTA CONNECTED.
2. INTERCHANGE ANY TWO LINE LEADS TO REVERSE ROTATION.
3. OPTIONAL THERMOSTATS ARE PROVIDED WHEN SPECIFIED.
4. ACTUAL NUMBER OF INTERNAL PARALLEL CIRCUITS MAY VARY.
5. LEAD COLORS ARE OPTIONAL. LEADS MUST BE NUMBERED AS SHOWN.

CD0006

REV. DESC: ADD CLASS CONN00000007		
REV. LTR: E	VERSION: 01	TDR: 000001099922
FILE: \AAA\00005\141	REVISED: 10:24:49 02/19/2019	BY: ENBRIRO
MTL: -		© □

**BALDOR - RELIANCE®**

3PH, SV, 3 LEADS, WYE OR DELTA CONNECTED

SH 1 of 1