



---

# Customer information packet

## VLECP3769T

7.5HP, 3510RPM, 3PH, 60HZ, 213LP, 0732M, TEFC

Class - CLI GP A,B,C,D

Division - Division II

## Specifications

Enclosure	TEFC
Frame	213LP
Frame Material	Iron
Frequency	60.00 Hz
Haz Area Class and Group	CLI GP A,B,C,D
Haz Area Division	Division II
Motor Letter Type	Three Phase
Output @ Frequency	7.500 HP @ 60 HZ
Phase	3
Synchronous Speed @ Frequency	3600 RPM @ 60 HZ
Voltage @ Frequency	230.0 V @ 60 HZ 460.0 V @ 60 HZ
Agency Approvals	UR CCSA US CSA EEV
Ambient Temperature	40 °C
Auxiliary Box	NO AUXILLARY BOX
Auxiliary Box Lead Termination	None
Base Indicator	No Mounting
Bearing Grease Type	Polyrex EM (-20F +300F)
Blower	None
Constant Torque Speed Range	6
Current @ Voltage	8.600 A @ 460.0 V 17.200 A @ 230.0 V
Design Code	B
Drip Cover	Drip Cover
Duty Rating	CONT
Efficiency @ 100% Load	91.0 %
Electrically Isolated Bearing	Not Electrically Isolated
Feedback Device	NO FEEDBACK
Front Face Code	Drip Cover Mounting
Front Shaft Indicator	None

## Part detail

Revision	M
Type	AC
Mech. spec.	07H347
Base	
Status	PRD/A
Elec. spec.	07WGY010
Layout	07LYH347
Eff. date	09-22-2022
CD Diagram	CD0005
Poles	02
Leads	9#14
Proprietary	False
Created date	07-07-2015

Haz Area Temp Code	T3C
Heater Indicator	No Heater
High Voltage Full Load Amps	8.6 a
Insulation Class	F
Inverter Code	Inverter Ready
KVA Code	H
Lifting Lugs	Vertical Lifting Lugs
Locked Bearing Indicator	Locked Bearing
Max Speed	5400 rpm
Motor Lead Exit	Ko Box
Motor Lead Quantity/Wire Size	9 @ 14 AWG
Motor Lead Termination	Flying Leads
Motor Standards	NEMA
Motor Type	0732M
Mounting Arrangement	F1
Number of Poles	2
Overall Length	22.51 IN
Power Factor	88
Product Family	Super-E Chemical Processing
Pulley End Bearing Type	Thrust
Pulley Face Code	P-Base
Pulley Shaft Indicator	P-Base Groove & Key
Rodent Screen	None
RoHS Status	ROHS COMPLIANT
Service Factor	1.15
Shaft Extension Location	Pulley End
Shaft Ground Indicator	No Shaft Grounding
Shaft Rotation	Reversible
Shaft Slinger Indicator	No Slinger
Speed	3510 rpm
Speed Code	Single Speed
Starting Method	Direct on line
Thermal Device - Bearing	None
Thermal Device - Winding	None

**Vibration Sensor Indicator****No Vibration Sensor****Winding Thermal 1****None****Winding Thermal 2****None**

**Nameplate**

<b>NP3258</b>									
<b>CAT.NO.</b>	VLECP3769T								
<b>SPEC.</b>	07H347Y010G1								
<b>HP</b>	7.5 TE								
<b>VOLTS</b>	230/460								
<b>AMP</b>	17.2/8.6								
<b>RPM</b>	3510								
<b>FRAME</b>	213LP	<b>HZ</b>	60	<b>PH</b>	3				
<b>SER.F.</b>	1.15	<b>CODE</b>	H	<b>DES</b>	B	<b>CL</b>	F		
<b>RATING</b>	40C AMB-CONT								
<b>SN</b>									
<b>DE</b>	QJ211	<b>ODE</b>	6307						
<b>NEMA-NOM-EFF</b>	91	<b>PF</b>	88						
<b>G.MIN.EFF</b>	89.5	<b>CC</b>	010A						
<b>T. CODE</b>	T3C	<b>T=</b>	160						

<b>NP3261</b>			
<b>SPEC.</b>	07H347Y010G1		
<b>D.E. BRG.</b>	55BZ02X00X		
<b>O.D.E. BRG.</b>	35BC03X30X		
<b>GREASE</b>	POLYREX EM		
<b>RPM MAX</b>	5400	<b>MAX. KVAR</b>	
<b>BLANK</b>			
<b>INV.TYPE</b>	PWM		
<b>T=</b>	160		
<b>C HP FR</b>	60	<b>C HP TO</b>	90
<b>CT HZ FROM</b>	6	<b>CT HZ TO</b>	60
<b>VT HZ FROM</b>	3	<b>VT HZ TO</b>	60
<b>HTR-VOLTS</b>	N/A	<b>HTR-AMPS</b>	N/A
<b>HTR-WATTS</b>	N/A	<b>MAX. SPACE HEATER TEMP.</b>	N/A

**AC Induction Motor Performance Data**

Record # 47061

Typical performance - not guaranteed values

Winding: 07WGY010-R020		Type: 0732M		Enclosure: TEFC		
<b>Nameplate Data</b>			<b>460 V, 60 Hz: High Voltage Connection</b>			
Rated Output (HP)	7.5		Full Load Torque	11.1 LB-FT		
Volts	230/460		Start Configuration	direct on line		
Full Load Amps	17.2/8.6		Breakdown Torque	45.1 LB-FT		
R.P.M.	3510		Pull-up Torque	15 LB-FT		
Hz	60	Phase	3	Locked-rotor Torque	21.3 LB-FT	
NEMA Design Code	B		KVA Code	H	Starting Current	61.4 A
Service Factor (S.F.)	1.15		No-load Current	2.75 A		
NEMA Nom. Eff.	91	Power Factor	88	Line-line Res. @ 25°C	1.14 Ω	
Rating - Duty	40C AMB-CONT		Temp. Rise @ Rated Load	41°C		
S.F. Amps			Temp. Rise @ S.F. Load	50°C		
			Locked-rotor Power Factor	31.7		
			Rotor inertia	0.292 LB-FT <sup>2</sup>		

**Load Characteristics 460 V, 60 Hz, 7.5 HP**

% of Rated Load	25	50	75	100	125	150	S.F.
Power Factor	57	78	85	89	89	90	89
Efficiency	86.8	91.2	92.2	91.8	90.9	89.8	91.3
Speed	3579	3558	3536	3510	3484	3454	3494
Line amperes	3.42	4.86	6.63	8.52	10.7	13	9.84

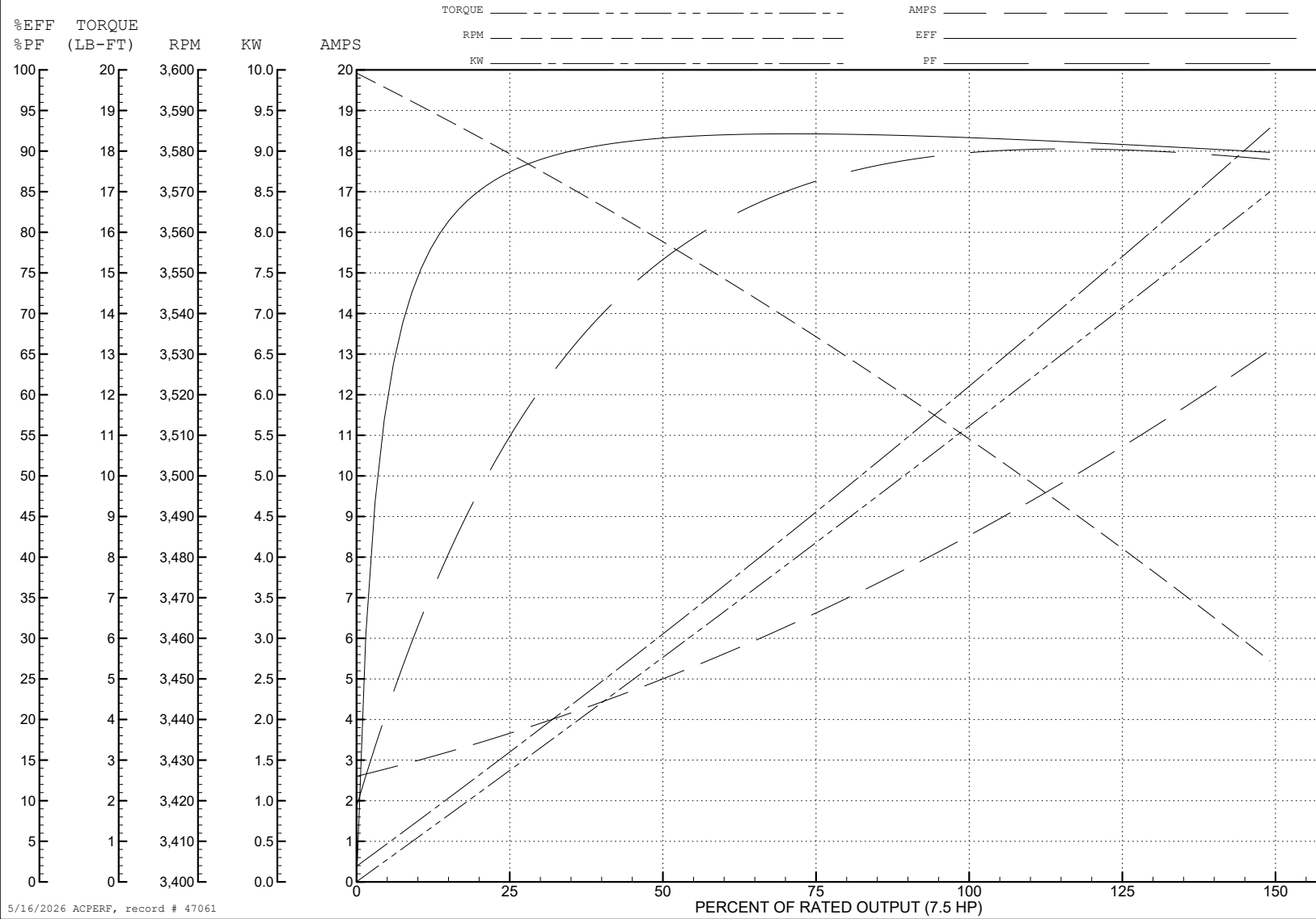
ABB Motors and Mechanical Inc.

WINDING # 07WGY010

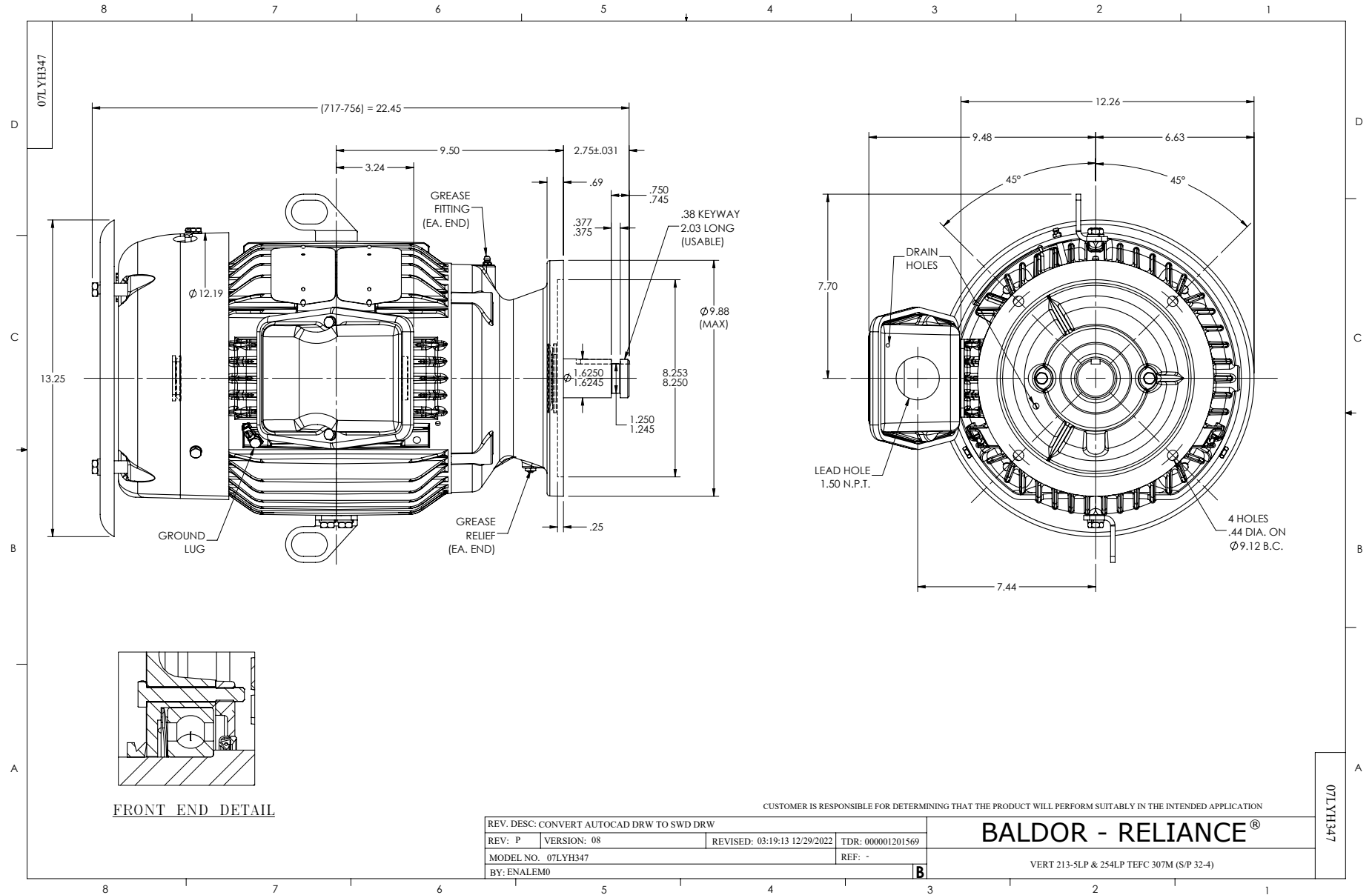
Typical performance - not guaranteed values.

7.5 HP 3 PH 60 HZ 3510 RPM 460 V 0732M

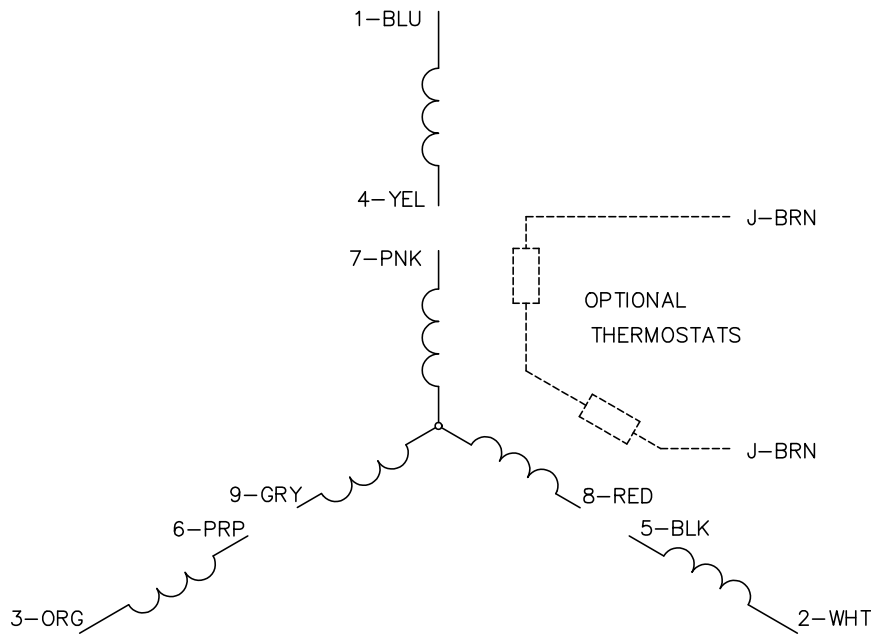
TORQUES (LB-FT): PO=45.1 PU=15 LR=21.3 LRA=61.4



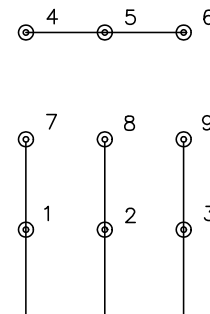
5/16/2026 ACPERF, record # 47061



CD0005

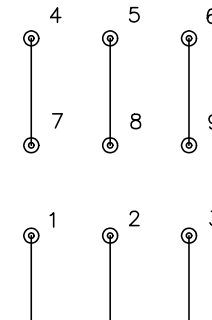


LOW VOLTAGE  
(2Y)



LINE

HIGH VOLTAGE  
(1Y)



LINE

NOTES:

1. INTERCHANGE ANY TWO LINE LEADS TO REVERSE ROTATION.
2. OPTIONAL THERMOSTATS ARE PROVIDED WHEN SPECIFIED.
3. ACTUAL NUMBER OF INTERNAL PARALLEL CIRCUITS MAY BE A MULTIPLE OF THOSE SHOWN ABOVE.
4. LEAD COLORS ARE OPTIONAL. LEADS MUST ALWAYS BE NUMBERED AS SHOWN.

REV. DESC: REVISE TO SHOW OPTIONAL COLORS			
REV. LTR: E	BY: JLP	REVISED: 01/19/99 10:15	TDR: 0171435
S00000		FILE: AAA00005140	MDL: -
		MTL: -	

**BALDOR ELECTRIC Co.**

3PH, DV, 9 LEADS

CD0005