



Customer information packet

VLECP3661T

3HP, 1755RPM, 3PH, 60HZ, 182LP, 0632M, TEFC, F1

Class - CLI GP A,B,C,D

Division - Division II

Specifications

Enclosure	TEFC
Frame	182LP
Frame Material	Iron
Frequency	60.00 Hz
Haz Area Class and Group	CL I GP A,B,C,D
Haz Area Division	Division II
Motor Letter Type	Three Phase
Output @ Frequency	3.000 HP @ 60 HZ
Phase	3
Synchronous Speed @ Frequency	1800 RPM @ 60 HZ
Voltage @ Frequency	230.0 V @ 60 HZ 460.0 V @ 60 HZ
Agency Approvals	CCSA US CSA EEV UR
Ambient Temperature	40 °C
Auxillary Box	No Auxillary Box
Auxillary Box Lead Termination	None
Base Indicator	No Mounting
Bearing Grease Type	Polyrex EM (-20F +300F)
Blower	None
Constant Torque Speed Range	1.5
Current @ Voltage	8.600 A @ 208.0 V 8.200 A @ 230.0 V 4.100 A @ 460.0 V
Design Code	B
Drip Cover	Drip Cover
Duty Rating	CONT
Efficiency @ 100% Load	89.5 %
Electrically Isolated Bearing	Not Electrically Isolated
Feedback Device	NO FEEDBACK
Front Face Code	Standard

Part detail

Revision	F
Type	AC
Mech. spec.	06F063
Base	
Status	PRD/A
Elec. spec.	06WGX181
Layout	06LYF063
Eff. date	02-21-2022
CD Diagram	CD0005
Poles	04
Leads	9#16
Proprietary	False
Created date	07-07-2015

Front Shaft Indicator	None
Haz Area Temp Code	T3C
Heater Indicator	No Heater
High Voltage Full Load Amps	4.1 a
Insulation Class	F
Inverter Code	Inverter Ready
KVA Code	J
Lifting Lugs	Vertical Lifting Lugs
Locked Bearing Indicator	Locked Bearing
Max Speed	2700 rpm
Motor Lead Exit	Ko Box
Motor Lead Quantity/Wire Size	9 @ 16 AWG
Motor Lead Termination	Flying Leads
Motor Standards	NEMA
Motor Type	0632M
Mounting Arrangement	F1
Number of Poles	4
Overall Length	22.18 IN
Power Factor	77
Product Family	Super-E Chemical Processing
Pulley End Bearing Type	Thrust
Pulley Face Code	P-Base
Pulley Shaft Indicator	P-Base Groove & Key
Rodent Screen	None
Service Factor	1.15
Shaft Diameter	1.125 IN
Shaft Extension Location	Pulley End
Shaft Ground Indicator	No Shaft Grounding
Shaft Rotation	Reversible
Shaft Slinger Indicator	No Slinger
Speed	1755 rpm
Speed Code	Single Speed
Starting Method	Direct on line
Thermal Device - Bearing	None

Thermal Device - Winding	None
Vibration Sensor Indicator	No Vibration Sensor
Winding Thermal 1	None
Winding Thermal 2	None

Nameplate

NP3258									
CAT.NO.	VLECP3661T								
SPEC.	06F063X181G1								
HP	3 TE								
VOLTS	230/460								
AMP	8.2/4.1								
RPM	1755								
FRAME	182LP	HZ	60	PH	3				
SER.F.	1.15	CODE	J	DES	B	CL	F		
RATING	40C AMB-CONT								
SN									
DE	QJ307	ODE	6206						
NEMA-NOM-EFF	89.5	PF	77						
G.MIN.EFF	87.5	CC	010A						
T. CODE	T3C	T=	160						

NP3261			
SPEC.	06F063X181G1		
D.E. BRG.	35BZ03X00X		
O.D.E. BRG.	30BC02X30X		
GREASE	POLYREX EM		
RPM MAX	2700	MAX. KVAR	0.87
BLANK	SFA 9.2/4.6		
INV.TYPE	PWM		
T=	160		
C HP FR	60	C HP TO	90
CT HZ FROM	1.5	CT HZ TO	60
VT HZ FROM	-0	VT HZ TO	60
HTR-VOLTS	N/A	HTR-AMPS	N/A
HTR-WATTS	N/A	MAX. SPACE HEATER TEMP.	N/A

AC Induction Motor Performance Data

Record # 35861

Typical performance - not guaranteed values

Winding: 06WGX181-R006		Type: 0632M		Enclosure: TEFC	
Nameplate Data			460 V, 60 Hz: High Voltage Connection		
Rated Output (HP)	3	Full Load Torque	9.06 LB-FT		
Volts	230/460	Start Configuration	direct on line		
Full Load Amps	8.2/4.1	Breakdown Torque	33.1 LB-FT		
R.P.M.	1755	Pull-up Torque	18.2 LB-FT		
Hz	60 Phase	3	Locked-rotor Torque	20.4 LB-FT	
NEMA Design Code	B KVA Code	J	Starting Current	29.8 A	
Service Factor (S.F.)		1.15	No-load Current	2.14 A	
NEMA Nom. Eff.	89.5 Power Factor	77	Line-line Res. @ 25°C	3.94 Ω	
Rating - Duty	40C AMB-CONT		Temp. Rise @ Rated Load	35°C	
S.F. Amps			Temp. Rise @ S.F. Load	42°C	
			Locked-rotor Power Factor	41	
			Rotor inertia	0.298 LB-FT ²	

Load Characteristics 460 V, 60 Hz, 3 HP

% of Rated Load	25	50	75	100	125	150	S.F.
Power Factor	38	58	70	77	81	83	79
Efficiency	83.2	88.3	89.8	89.7	89.1	87.7	89.3
Speed	1790	1779	1769	1757	1744	1730	1749
Line amperes	2.34	2.79	3.39	4.1	4.91	5.86	4.59

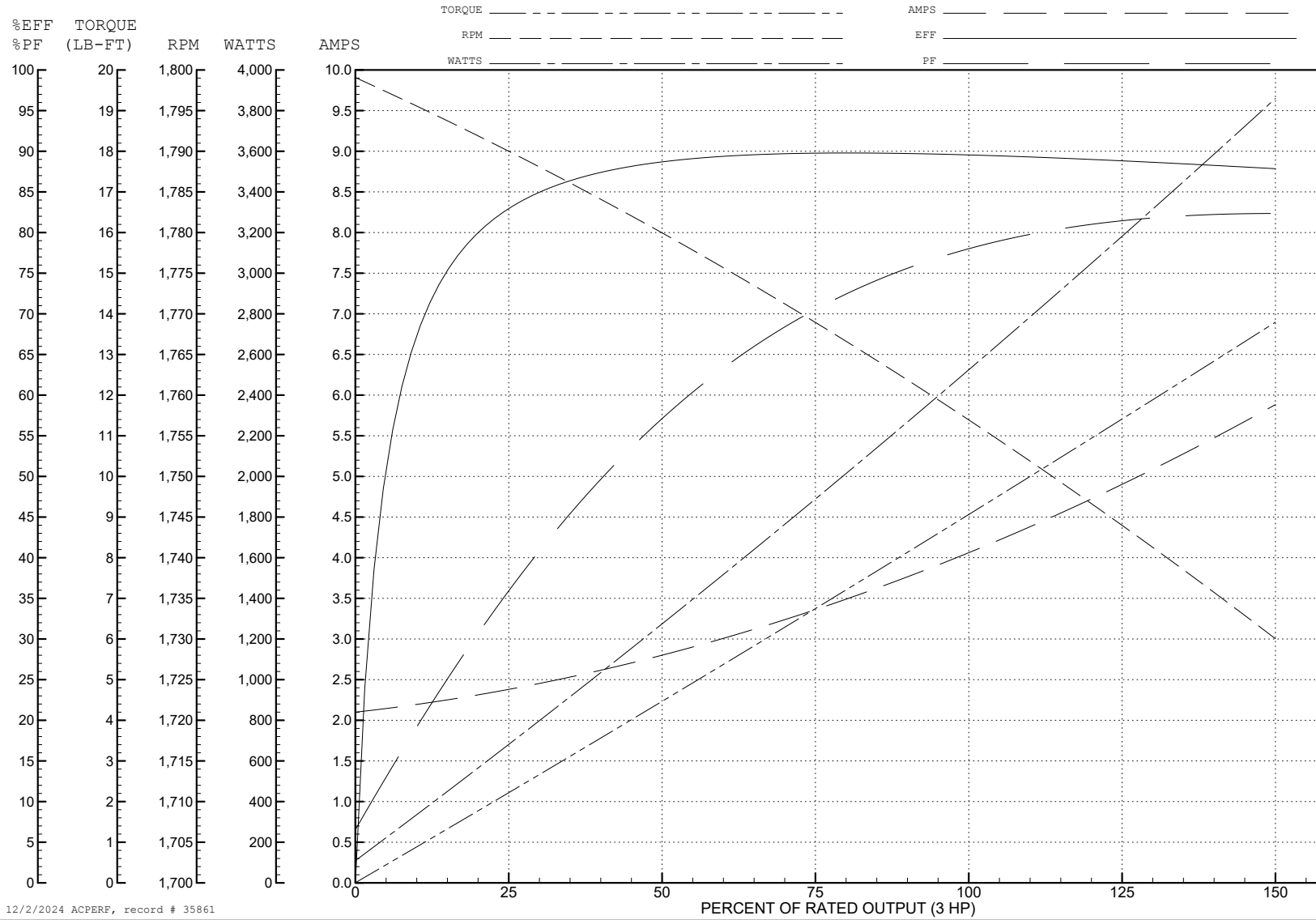
ABB Motors and Mechanical Inc.

WINDING # 06WGX181

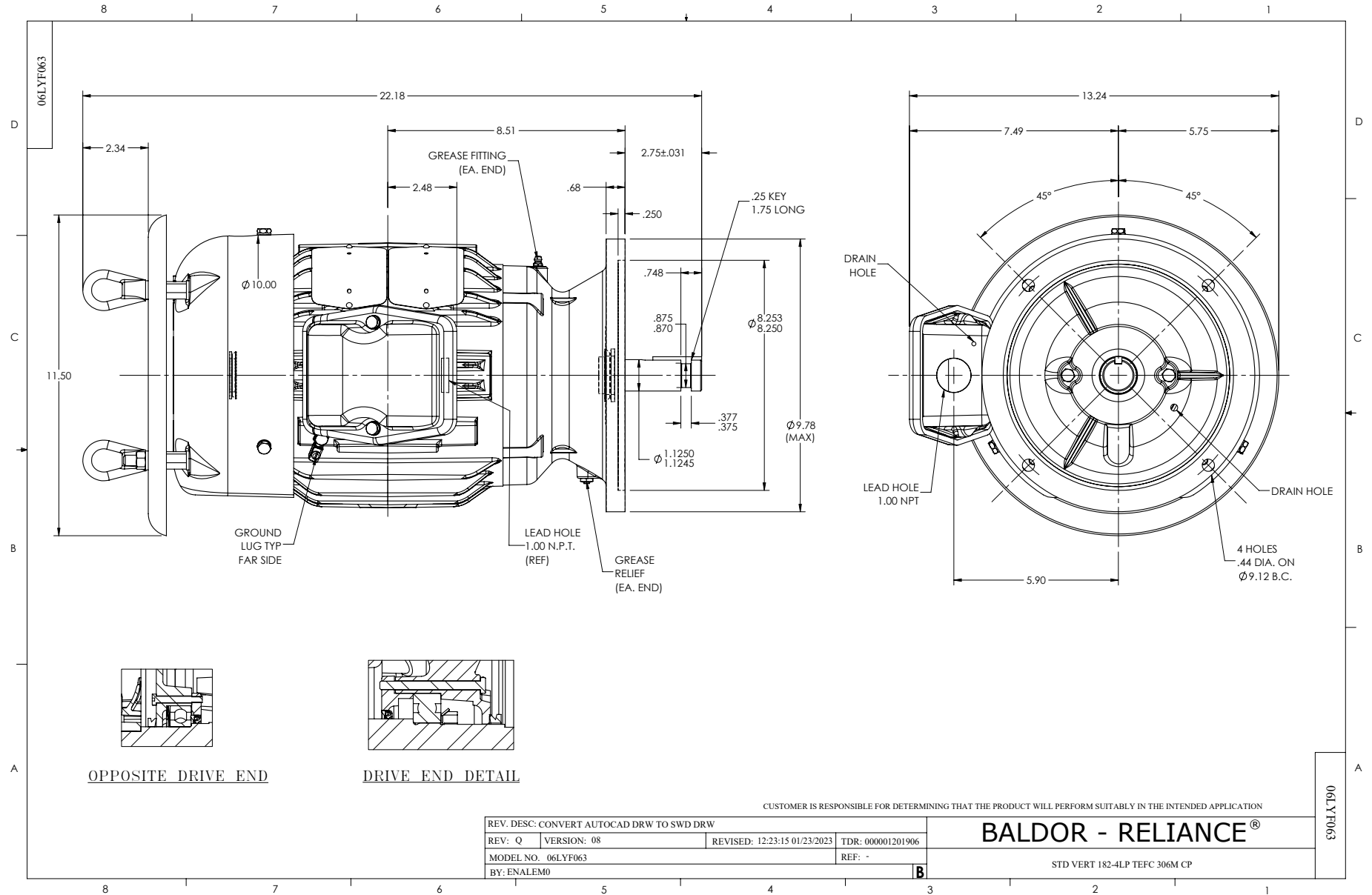
3 HP 3 PH 60 HZ 1755 RPM 460 V 0632M

Typical performance - not guaranteed values.

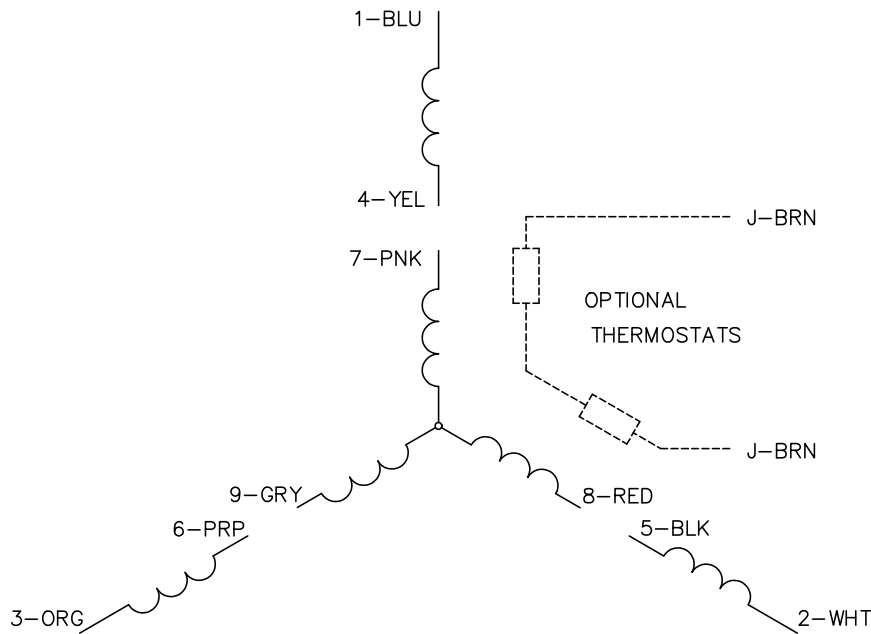
TORQUES (LB-FT): PO=33.1 PU=18.2 LR=20.4 LRA=29.8



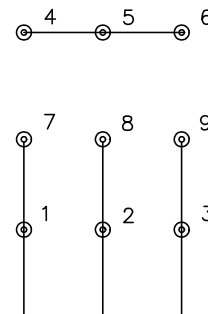
12/2/2024 ACPERF, record # 35861



CD0005



LOW VOLTAGE
(2Y)



LINE

HIGH VOLTAGE
(1Y)



LINE

NOTES:

1. INTERCHANGE ANY TWO LINE LEADS TO REVERSE ROTATION.
2. OPTIONAL THERMOSTATS ARE PROVIDED WHEN SPECIFIED.
3. ACTUAL NUMBER OF INTERNAL PARALLEL CIRCUITS MAY BE A MULTIPLE OF THOSE SHOWN ABOVE.
4. LEAD COLORS ARE OPTIONAL. LEADS MUST ALWAYS BE NUMBERED AS SHOWN.

REV. DESC: REVISE TO SHOW OPTIONAL COLORS			
REV. LTR: E	BY: JLP	REVISED: 01/19/99 10:15	TDR: 0171435
S00000		FILE: AAA00005140	MDL: -
		MTL: -	

BALDOR ELECTRIC Co.

3PH, DV, 9 LEADS

CD0005