

# **ABB BALDOR RELIANCE III**

---

## **Customer information packet**

VL3606T

3HP, 3450RPM, 1PH, 60HZ, 182TC, 3634L, TEFC, F1

Class - None

Division - Not Applicable

**Specifications**

<b>Enclosure</b>	TEFC
<b>Frame</b>	182TC
<b>Frame Material</b>	Steel
<b>Frequency</b>	60.00 Hz
<b>Haz Area Class and Group</b>	None
<b>Haz Area Division</b>	Not Applicable
<b>Motor Letter Type</b>	Cap Start, Induction Run
<b>Output @ Frequency</b>	3.000 HP @ 60 HZ
<b>Phase</b>	1
<b>Synchronous Speed @ Frequency</b>	3600 RPM @ 60 HZ
<b>Voltage @ Frequency</b>	115.0 V @ 60 HZ 230.0 V @ 60 HZ
<b>Agency Approvals</b>	C UR US
<b>Ambient Temperature</b>	40 °C
<b>Auxiliary Box</b>	NO AUXILLARY BOX
<b>Auxiliary Box Lead Termination</b>	None
<b>Base Indicator</b>	No Mounting
<b>Bearing Grease Type</b>	Polyrex EM (-20F +300F)
<b>Blower</b>	None
<b>Current @ Voltage</b>	14.500 A @ 230.0 V 15.000 A @ 208.0 V 29.000 A @ 115.0 V
<b>Design Code</b>	L
<b>Drip Cover</b>	No Drip Cover
<b>Duty Rating</b>	CONT
<b>Efficiency @ 100% Load</b>	76.0 %
<b>Electrically Isolated Bearing</b>	Not Electrically Isolated
<b>Feedback Device</b>	NO FEEDBACK
<b>Front Face Code</b>	Standard
<b>Front Shaft Indicator</b>	None
<b>Heater Indicator</b>	No Heater
<b>High Voltage Full Load Amps</b>	14.5 a

**Part Detail**

<b>Revision</b>	AE
<b>Type</b>	AC
<b>Mech. spec.</b>	36C003
<b>Base</b>	
<b>Status</b>	PRD/A
<b>Elec. spec.</b>	36WG0201
<b>Layout</b>	36LYC003
<b>Eff. date</b>	05-07-2026
<b>CD Diagram</b>	CD0001
<b>Poles</b>	02
<b>Leads</b>	4#14 A PH,2#16 B PH
<b>Proprietary</b>	False
<b>Created date</b>	01-01-0001

<b>Insulation Class</b>	F
<b>Inverter Code</b>	Not Inverter
<b>IP Rating</b>	NONE
<b>KVA Code</b>	G
<b>Lifting Lugs</b>	No Lifting Lugs
<b>Locked Bearing Indicator</b>	Locked Bearing
<b>Motor Lead Exit</b>	Ko Box
<b>Motor Lead Quantity/Wire Size</b>	4 @ 14 AWG, A PH
<b>Motor Lead Termination</b>	Flying Leads
<b>Motor Standards</b>	NEMA
<b>Motor Type</b>	3634L
<b>Mounting Arrangement</b>	F1
<b>Number of Poles</b>	2
<b>Overall Length</b>	16.55 IN
<b>Power Factor</b>	87
<b>Product Family</b>	General Purpose
<b>Pulley End Bearing Type</b>	Ball
<b>Pulley Face Code</b>	C-Face
<b>Pulley Shaft Indicator</b>	Standard
<b>Rodent Screen</b>	None
<b>Service Factor</b>	1.15
<b>Shaft Diameter</b>	1.125 IN
<b>Shaft Extension Location</b>	Pulley End
<b>Shaft Ground Indicator</b>	No Shaft Grounding
<b>Shaft Rotation</b>	Reversible
<b>Shaft Slinger Indicator</b>	No Slinger
<b>Speed</b>	3450 rpm
<b>Speed Code</b>	Single Speed
<b>Starting Method</b>	Direct on line
<b>Thermal Device - Bearing</b>	None
<b>Thermal Device - Winding</b>	None
<b>Vibration Sensor Indicator</b>	No Vibration Sensor
<b>Winding Thermal 1</b>	None
<b>Winding Thermal 2</b>	None

**Nameplate**

<b>NP1256L</b>										
<b>CAT.NO.</b>	VL3606T									
<b>SPEC.</b>	36C03-201									
<b>HP</b>	3									
<b>VOLTS</b>	115/230									
<b>AMP</b>	29/14.5									
<b>RPM</b>	3450									
<b>FRAME</b>	182TC	<b>HZ</b>	60		<b>PH</b>	1				
<b>SER.F.</b>	1.15	<b>CODE</b>	G	<b>DES</b>	L	<b>CLASS</b>	F			
<b>NEMA-NOM-EFF</b>	76	<b>PF</b>	87							
<b>RATING</b>	40C AMB-CONT									
<b>CC</b>										
<b>DE</b>	6206	<b>ODE</b>	6205							
<b>ENCL</b>	TEFC	<b>SN</b>								

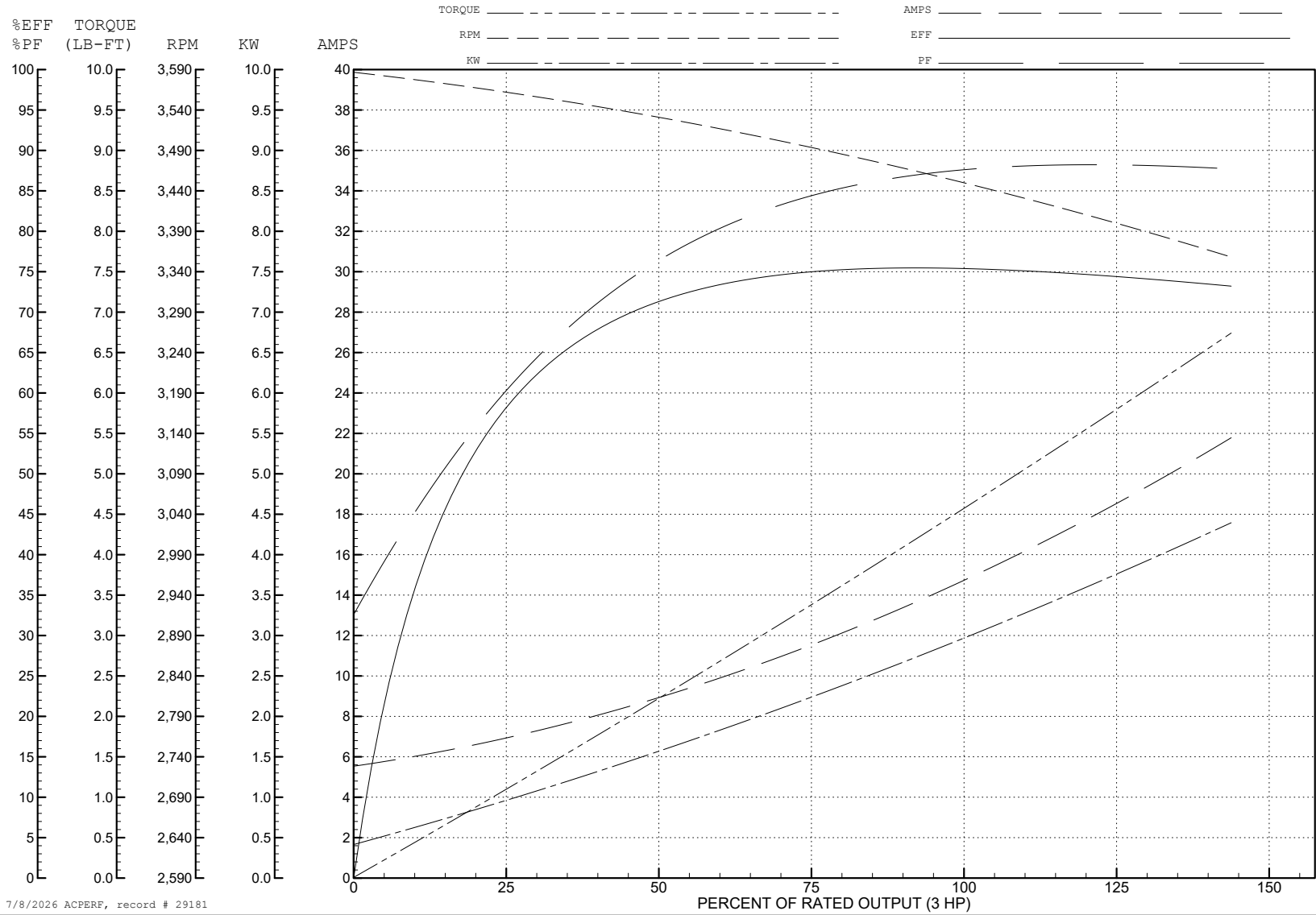
ABB Motors and Mechanical Inc.

WINDING # 36WG0201

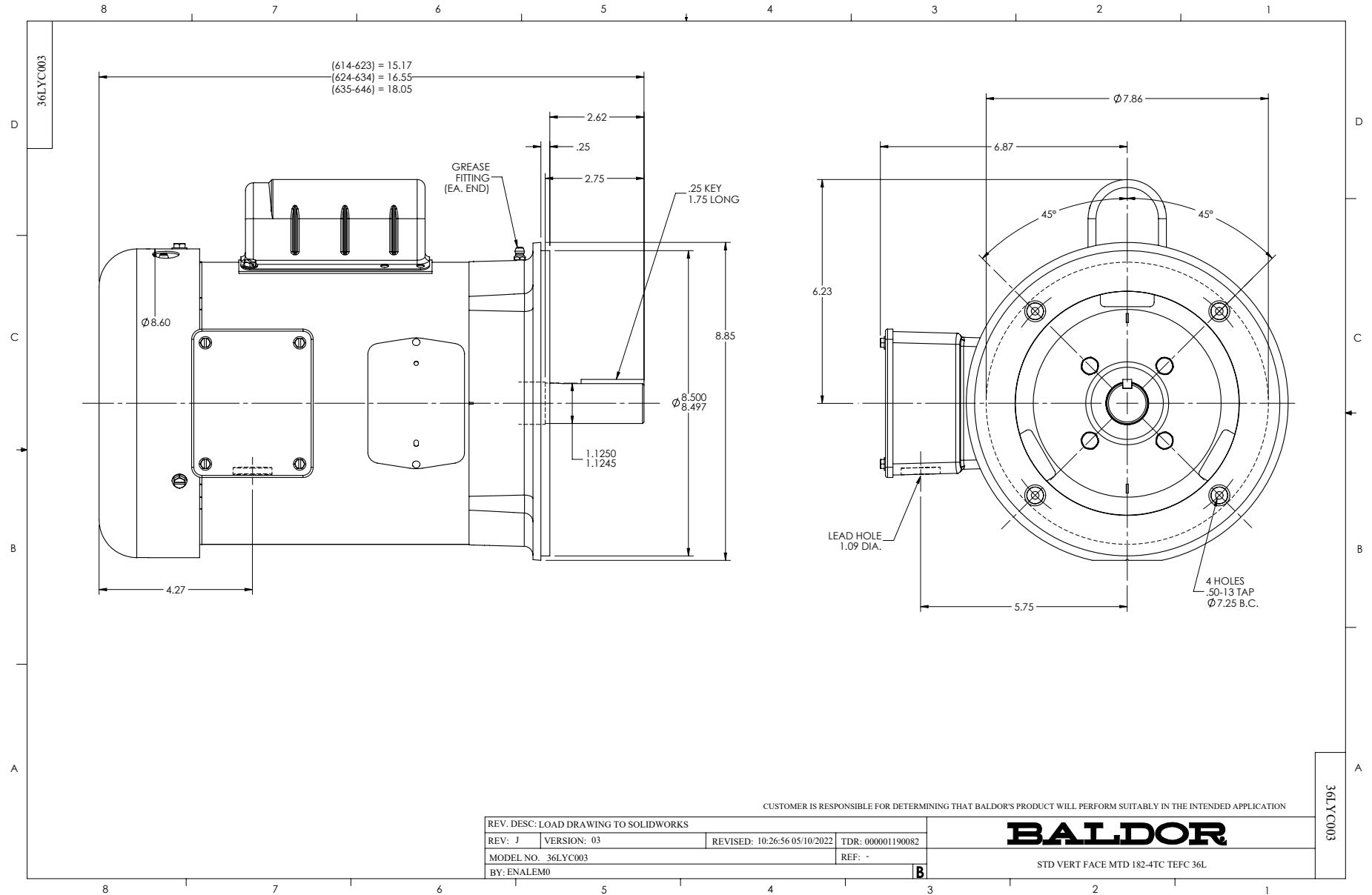
3 HP 1 PH 60 HZ 3450 RPM 230 V 3634L

Typical performance - not guaranteed values.

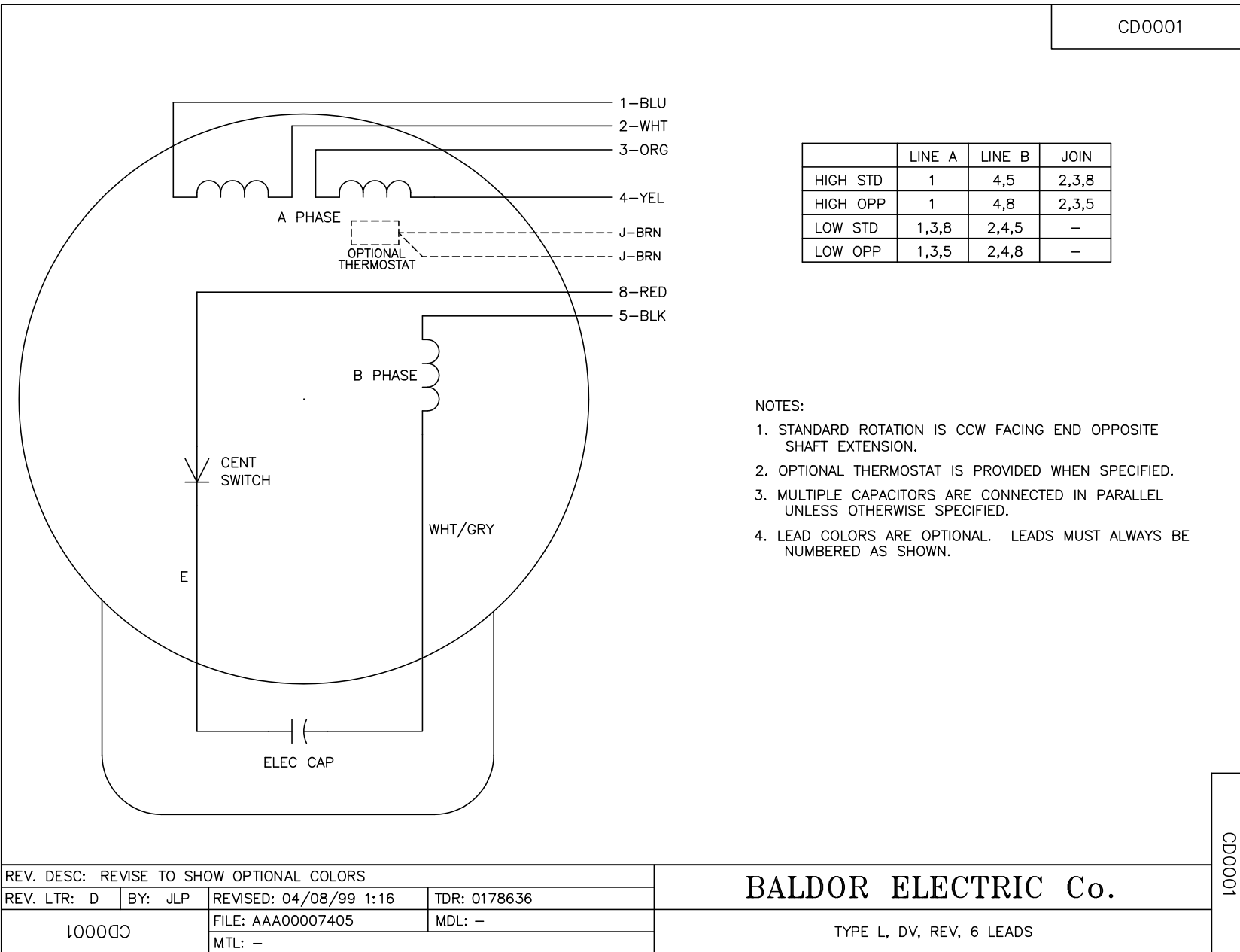
TORQUES (LB-FT): PO=14 PU=8 LR=10 LRA=86



7/8/2026 ACPERF, record # 29181



CD0001



CD0001

REV. DESC: REVISE TO SHOW OPTIONAL COLORS			
REV. LTR: D	BY: JLP	REVISED: 04/08/99 1:16	TDR: 0178636
100000		FILE: AAA00007405	MDL: -
		MTL: -	

**BALDOR ELECTRIC Co.**

TYPE L, DV, REV, 6 LEADS