

ABB BALDOR RELIANCE III

Customer information packet

VL3515-50

2/1.5KW, 2900RPM, 1PH, 50HZ, 56C, 3536LC, TEFC

Class - None

Division - Not Applicable

Specifications

Enclosure	TEFC
Frame	56C
Frame Material	Steel
Frequency	50.00 Hz
Haz Area Class and Group	None
Haz Area Division	Not Applicable
Motor Letter Type	Cap Start, Cap Run
Output @ Frequency	1.500 KW @ 50 HZ
Phase	1
Synchronous Speed @ Frequency	3000 RPM @ 50 HZ
Voltage @ Frequency	220.0 V @ 50 HZ
Agency Approvals	C UR US WEEE UKCA CURUS CE
Ambient Temperature	40 °C
Auxiliary Box	NO AUXILLARY BOX
Auxiliary Box Lead Termination	None
Base Indicator	No Mounting
Bearing Grease Type	Polyrex EM (-20F +300F)
Blower	None
Current @ Voltage	8.300 A @ 220.0 V
Design Code	-
Drip Cover	No Drip Cover
Duty Rating	CONT
Efficiency @ 100% Load	81.3 %
Electrically Isolated Bearing	Not Electrically Isolated
Feedback Device	NO FEEDBACK
Front Shaft Indicator	None
Heater Indicator	No Heater
High Voltage Full Load Amps	8.3 a

Part Detail

Revision	H
Type	AC
Mech. spec.	35E022
Base	
Status	PRD/A
Elec. spec.	35WGG772
Layout	35LYE022
Eff. date	04-20-2026
CD Diagram	CD0055
Poles	02
Leads	4#16 A PH,2#18 B PH
Proprietary	False
Created date	10-10-2023

Insulation Class	F
Inverter Code	Not Inverter
KVA Code	J
Lifting Lugs	No Lifting Lugs
Locked Bearing Indicator	Locked Bearing
Motor Lead Quantity/Wire Size	4 @ 14 AWG, A PH
Motor Lead Termination	Flying Leads
Motor Standards	NEMA
Motor Type	3536LC
Mounting Arrangement	F1
Number of Poles	2
Overall Length	15.48 IN
Power Factor	98
Product Family	General Purpose
Pulley End Bearing Type	Ball
Pulley Face Code	C-Face
Pulley Shaft Indicator	Standard
Rodent Screen	None
Service Factor	1.15
Shaft Diameter	0.625 IN
Shaft Ground Indicator	No Shaft Grounding
Shaft Rotation	Reversible
Shaft Slinger Indicator	No Slinger
Speed	2900 rpm
Speed Code	Single Speed
Starting Method	Direct on line
Thermal Device - Bearing	None
Thermal Device - Winding	None
Vibration Sensor Indicator	No Vibration Sensor
Winding Thermal 1	None
Winding Thermal 2	None

Nameplate

NP1372L	
CAT.NO.	VL3515-50
SPEC.	35E022G772
HP	2/1.5KW
VOLTS	110/220
AMP	17/8.5
R.P.M. (1/MIN)	2900
FRAME	56C HZ 50 PH 1
SER.F.	1.15 CODE H DES - CL F
NEMA-NOM-EFF	81.3 PF 95
RATING	40C AMB-S1 CONT
CC	IP44 IC411 34KG
DE	6205 ODE 6203
ENCL	TEFC SN
	IE2-50HZ 84.1(75%) 81.6(50%)

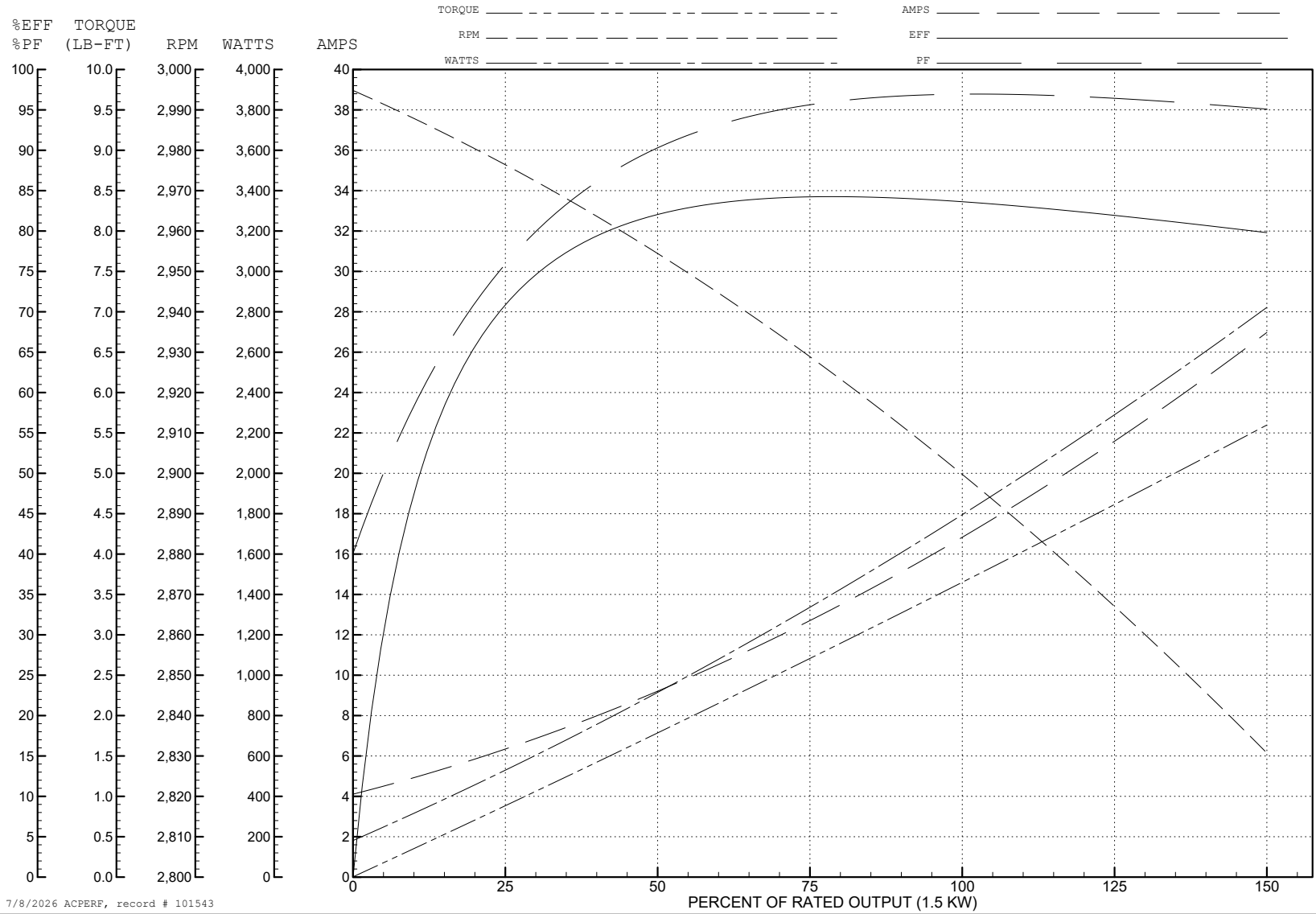
ABB Motors and Mechanical Inc.

WINDING # 35WGG772

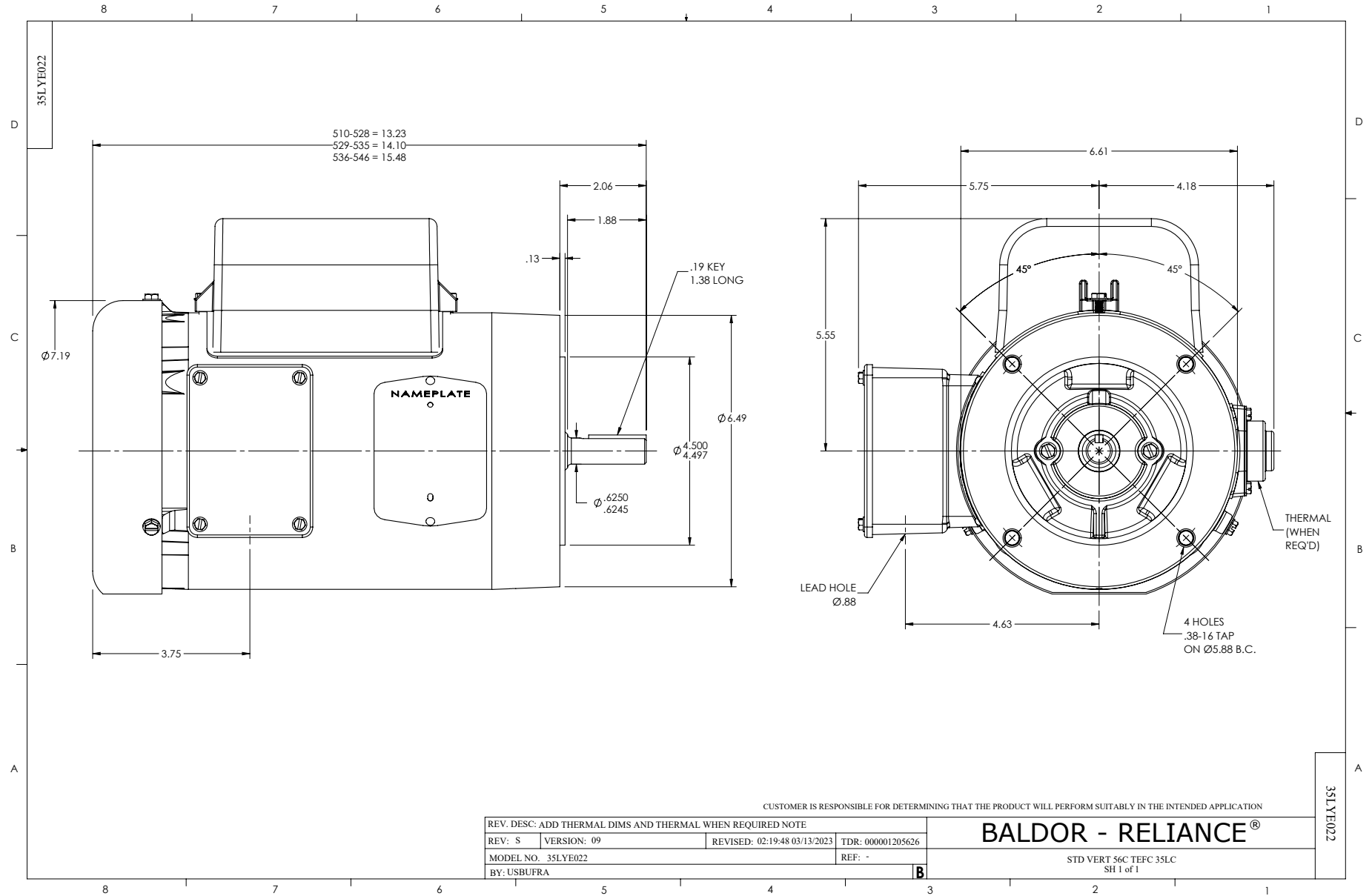
Typical performance - not guaranteed values.

1.5 KW 1 PH 50 HZ 2900 RPM 110 V 3536LC

TORQUES (LB-FT): PO=9.6 PU=9.1 LR=11.1 LRA=128



7/8/2026 ACPERF, record # 101543



CD0055

