

ABB BALDOR RELIANCE III

Customer information packet

VL3514-50

1.5/1.1KWHP, 1460RPM, 1PH, 50HZ, 56C, 3546LC

Class - None

Division - Not Applicable

Specifications

Enclosure	TEFC
Frame	56C
Frame Material	Steel
Frequency	50.00 Hz
Haz Area Class and Group	None
Haz Area Division	Not Applicable
Motor Letter Type	Cap Start, Cap Run
Output @ Frequency	1.500 HP @ 50 HZ
Phase	1
Synchronous Speed @ Frequency	1500 RPM @ 50 HZ
Voltage @ Frequency	110.0 V @ 50 HZ 220.0 V @ 50 HZ
Agency Approvals	C UR US CE CURUS UKCA WEEE
Ambient Temperature	40 °C
Auxiliary Box	NO AUXILLARY BOX
Auxiliary Box Lead Termination	None
Base Indicator	No Mounting
Bearing Grease Type	Polyrex EM (-20F +300F)
Blower	None
Current @ Voltage	7.700 A @ 220.0 V 15.400 A @ 110.0 V
Design Code	L
Drip Cover	No Drip Cover
Duty Rating	CONT
Efficiency @ 100% Load	81.4 %
Electrically Isolated Bearing	Not Electrically Isolated
Feedback Device	NO FEEDBACK
Front Shaft Indicator	None

Part Detail

Revision	-
Type	AC
Mech. spec.	35E022
Base	
Status	PRD/A
Elec. spec.	35WGF522
Layout	35LYE022
Eff. date	04-20-2026
CD Diagram	CD0055
Poles	04
Leads	6#18
Proprietary	False
Created date	04-20-2026

Heater Indicator	No Heater
High Voltage Full Load Amps	7.7 a
Insulation Class	F
Inverter Code	Not Inverter
KVA Code	K
Lifting Lugs	No Lifting Lugs
Locked Bearing Indicator	Locked Bearing
Motor Lead Quantity/Wire Size	6 @ 18 AWG
Motor Lead Termination	Flying Leads
Motor Standards	NEMA
Motor Type	3546LC
Mounting Arrangement	F1
Number of Poles	4
Overall Length	15.48 IN
Power Factor	79
Product Family	General Purpose
Pulley End Bearing Type	Ball
Pulley Face Code	C-Face
Pulley Shaft Indicator	Standard
Rodent Screen	None
Service Factor	1.15
Shaft Diameter	0.625 IN
Shaft Ground Indicator	No Shaft Grounding
Shaft Rotation	Reversible
Shaft Slinger Indicator	No Slinger
Speed	1460 rpm
Speed Code	Single Speed
Starting Method	Direct on line
Thermal Device - Bearing	None
Thermal Device - Winding	None
Vibration Sensor Indicator	No Vibration Sensor
Winding Thermal 1	None
Winding Thermal 2	None

Nameplate

NP1372L	
CAT.NO.	VL3514-50
SPEC.	35E022F522
HP	1.5/1.1KW
VOLTS	110/220
AMP	15.4/7.7
R.P.M. (1/MIN)	1460
FRAME	56C HZ 50 PH 1
SER.F.	1.15 CODE K DES L CL F
NEMA-NOM-EFF	81.4 PF 79
RATING	40C AMB-S1 CONT
CC	IP44 IC411 35KG
DE	6205 ODE 6203
ENCL	TEFC SN
	IE2 80.6(75%) 75.6(50%)

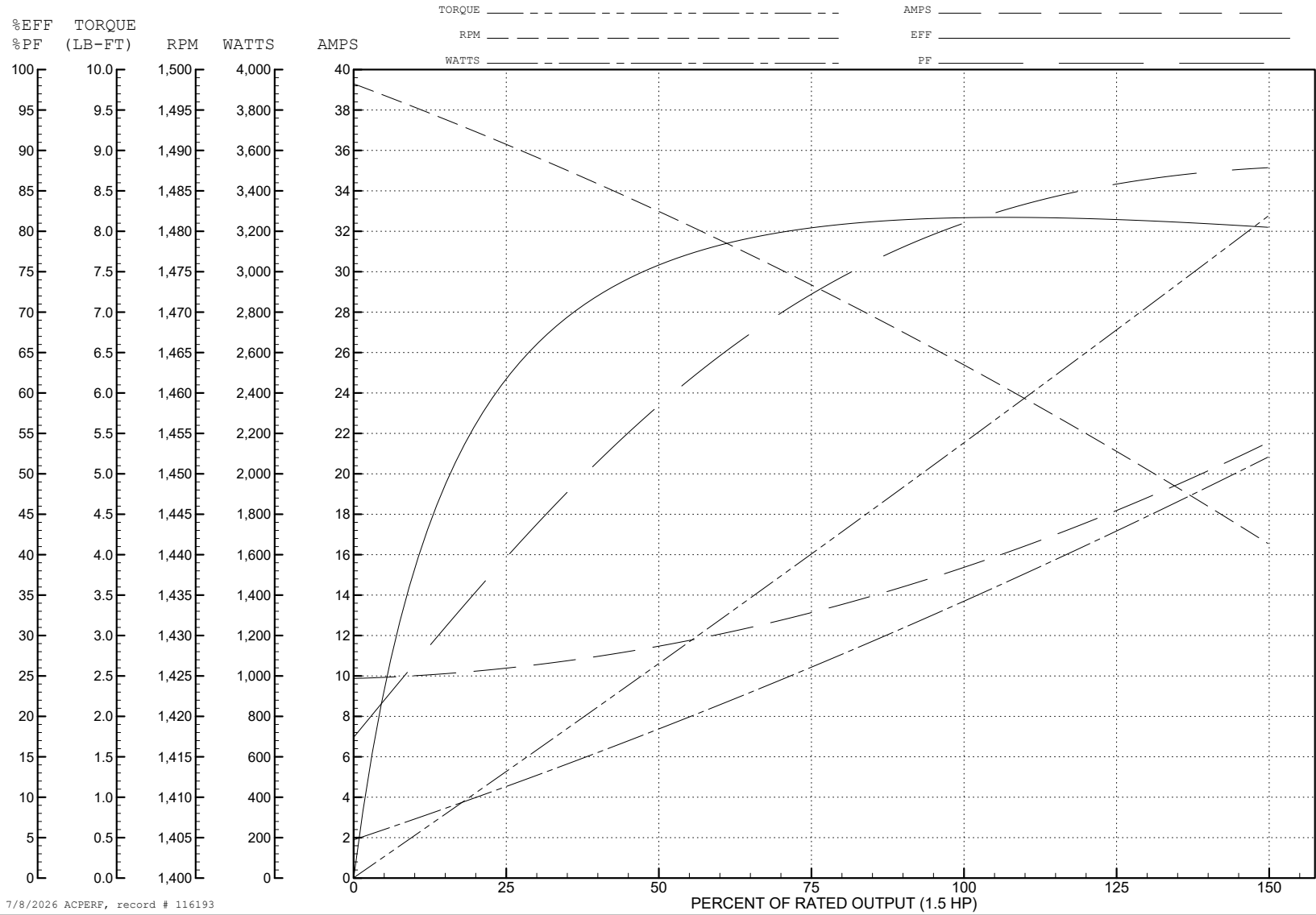
ABB Motors and Mechanical Inc.

WINDING # 35WGF522

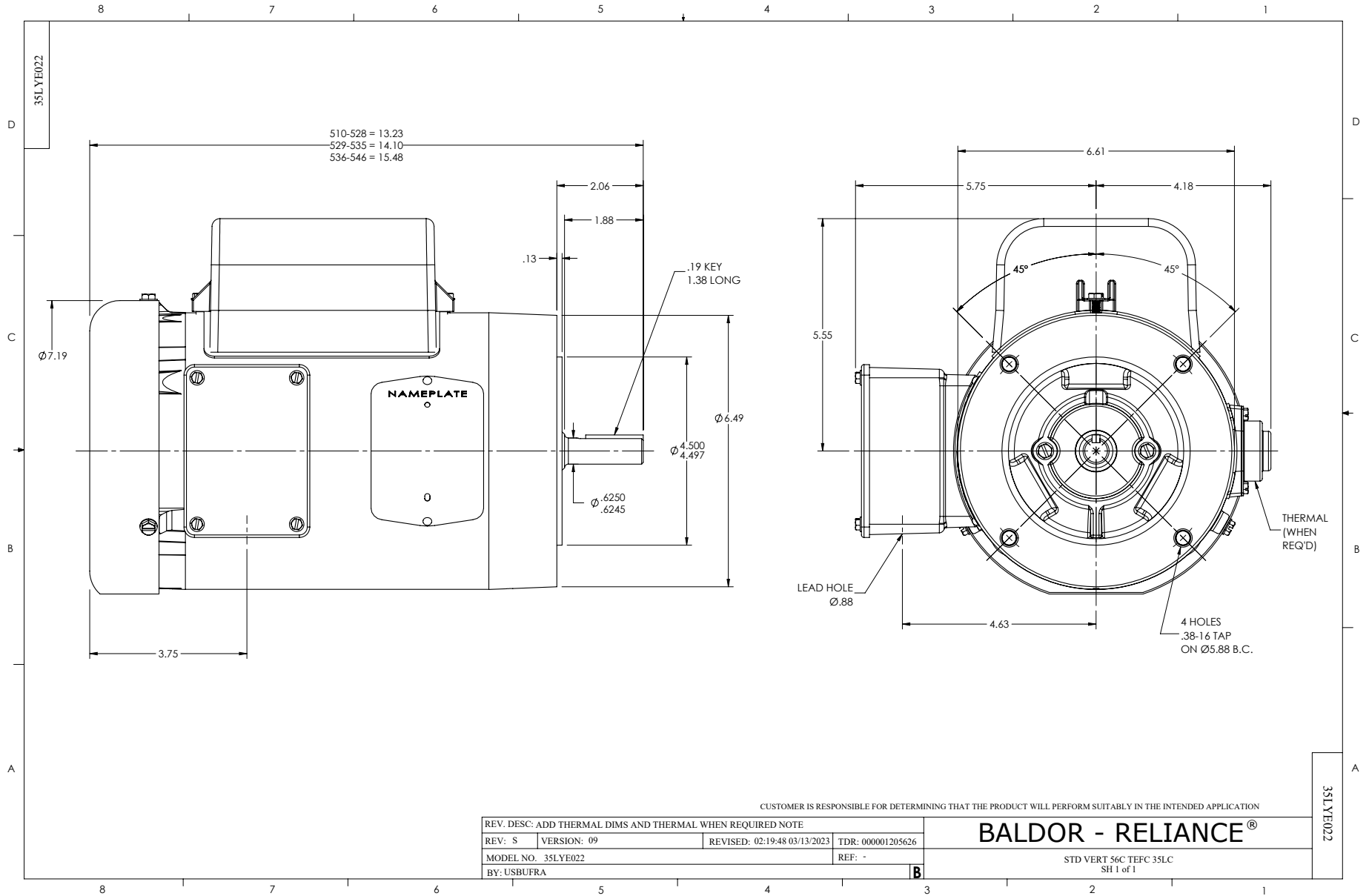
Typical performance - not guaranteed values.

1.5 HP 1 PH 50 HZ 1460 RPM 110 V 3546LC

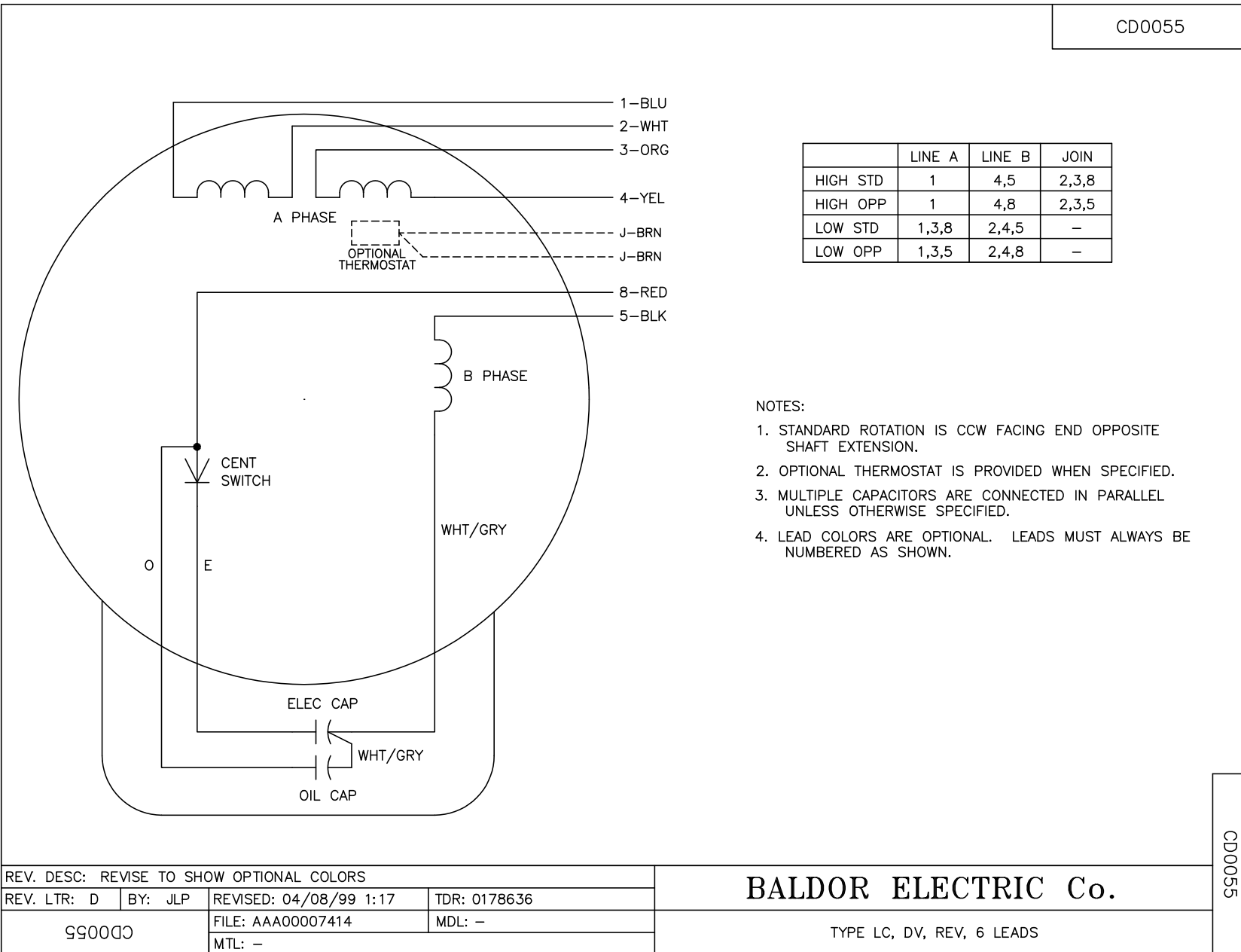
TORQUES (LB-FT): PO=17.6 PU=10.5 LR=13.2 LRA=117



7/8/2026 ACPERF, record # 116193



CD0055



	LINE A	LINE B	JOIN
HIGH STD	1	4,5	2,3,8
HIGH OPP	1	4,8	2,3,5
LOW STD	1,3,8	2,4,5	-
LOW OPP	1,3,5	2,4,8	-

NOTES:

1. STANDARD ROTATION IS CCW FACING END OPPOSITE SHAFT EXTENSION.
2. OPTIONAL THERMOSTAT IS PROVIDED WHEN SPECIFIED.
3. MULTIPLE CAPACITORS ARE CONNECTED IN PARALLEL UNLESS OTHERWISE SPECIFIED.
4. LEAD COLORS ARE OPTIONAL. LEADS MUST ALWAYS BE NUMBERED AS SHOWN.

CD0055

REV. DESC: REVISE TO SHOW OPTIONAL COLORS			
REV. LTR: D	BY: JLP	REVISED: 04/08/99 1:17	TDR: 0178636
C00000		FILE: AAA00007414	MDL: -
		MTL: -	

BALDOR ELECTRIC Co.

TYPE LC, DV, REV, 6 LEADS