



Customer information packet

VL3509A

1HP, 3450RPM, 1PH, 60HZ, 56C, 3524L, TEFC, F1

Class - None

Division - Not Applicable

Specifications

Enclosure	TEFC
Frame	56C
Frame Material	Steel
Frequency	60.00 Hz
Haz Area Class and Group	None
Haz Area Division	Not Applicable
Motor Letter Type	Cap Start, Induction Run
Output @ Frequency	1.000 HP @ 60 HZ
Phase	1
Synchronous Speed @ Frequency	3600 RPM @ 60 HZ
Voltage @ Frequency	230.0 V @ 60 HZ 115.0 V @ 60 HZ
Agency Approvals	CSA UR
Ambient Temperature	40 °C
Auxillary Box	No Auxillary Box
Auxillary Box Lead Termination	None
Base Indicator	No Mounting
Bearing Grease Type	Polyrex EM (-20F +300F)
Blower	None
Current @ Voltage	6.000 A @ 230.0 V 12.000 A @ 115.0 V
Design Code	N
Drip Cover	No Drip Cover
Duty Rating	CONT
Efficiency @ 100% Load	66.0 %
Electrically Isolated Bearing	Not Electrically Isolated
Feedback Device	NO FEEDBACK
Front Face Code	Standard
Front Shaft Indicator	None
Heater Indicator	No Heater
High Voltage Full Load Amps	6.0 a

Part detail

Revision	BN
Type	AC
Mech. spec.	35C013
Base	
Status	PRD/A
Elec. spec.	35WG0498
Layout	35LYC013
Eff. date	05-07-2024
CD Diagram	CD0008
Poles	02
Leads	4#16 A&J,2#18 B PH,1#14 #4TH
Proprietary	False
Created date	06-21-2007

Insulation Class	B
Inverter Code	Not Inverter
KVA Code	K
Lifting Lugs	No Lifting Lugs
Locked Bearing Indicator	Locked Bearing
Motor Lead Exit	Ko Box
Motor Lead Quantity/Wire Size	4 @ 16 AWG, A&J
Motor Lead Termination	Flying Leads
Motor Standards	NEMA
Motor Type	3524L
Mounting Arrangement	F1
Number of Poles	2
Overall Length	13.25 IN
Power Factor	81
Product Family	General Purpose
Pulley End Bearing Type	Ball
Pulley Face Code	C-Face
Pulley Shaft Indicator	Standard
Rodent Screen	None
RoHS Status	ROHS COMPLIANT
Service Factor	1.25
Shaft Diameter	0.625 IN
Shaft Extension Location	Pulley End
Shaft Ground Indicator	No Shaft Grounding
Shaft Rotation	Reversible
Shaft Slinger Indicator	No Slinger
Speed	3450 rpm
Speed Code	Single Speed
Starting Method	Direct on line
Thermal Device - Bearing	None
Thermal Device - Winding	None
Vibration Sensor Indicator	No Vibration Sensor
Winding Thermal 1	Automatic Thermal Overload
Winding Thermal 1 Location	SB

Winding Thermal 2

None

Nameplate

NP1257L									
CAT.NO.	VL3509A								
SPEC.	35C13-498								
HP	1								
VOLTS	115/230								
AMP	12/6								
RPM	3450								
FRAME	56C			HZ	60		PH	1	
SER.F.	1.25	CODE	K	DES	N	CL	B		
NEMA-NOM-EFF	66	PF	81						
RATING	40C AMB-CONT								
CC									
DE	6205	ODE	6203						
ENCL	TEFC	SN							
	SFA 14.4/7.2								

AC Induction Motor Performance Data

Record # 8070

Typical performance - not guaranteed values

Winding: 35WG0498-R001		Type: 3524L		Enclosure: TEFC	
Nameplate Data			230 V, 60 Hz: High Voltage Connection		
Rated Output (HP)	1	Full Load Torque	1.5 LB-FT		
Volts	115/230	Start Configuration	direct on line		
Full Load Amps	12/6	Breakdown Torque	4.1 LB-FT		
R.P.M.	3450	Pull-up Torque	3.1 LB-FT		
Hz	60 Phase	1	Locked-rotor Torque	5 LB-FT	
NEMA Design Code	N	KVA Code	K	Starting Current	38.5 A
Service Factor (S.F.)	1.25	No-load Current	2.95 A		
NEMA Nom. Eff.	66	Power Factor	81	Line-line Res. @ 25°C	2.46 Ω A Ph 1.75 Ω B Ph
Rating - Duty	40C	AMB-CONT	Temp. Rise @ Rated Load		
S.F. Amps	14.4/7.2	Temp. Rise @ S.F. Load			

Load Characteristics 230 V, 60 Hz, 1 HP

% of Rated Load	25	50	75	100	125	150	S.F.
Power Factor	50	64	75	81	84	86	84
Efficiency	49	65	67	69	68	67.5	68
Speed	3570	3550	3530	3505	3472	3445	3472
Line amperes	3.2	3.7	4.5	5.5	6.75	7.7	6.75

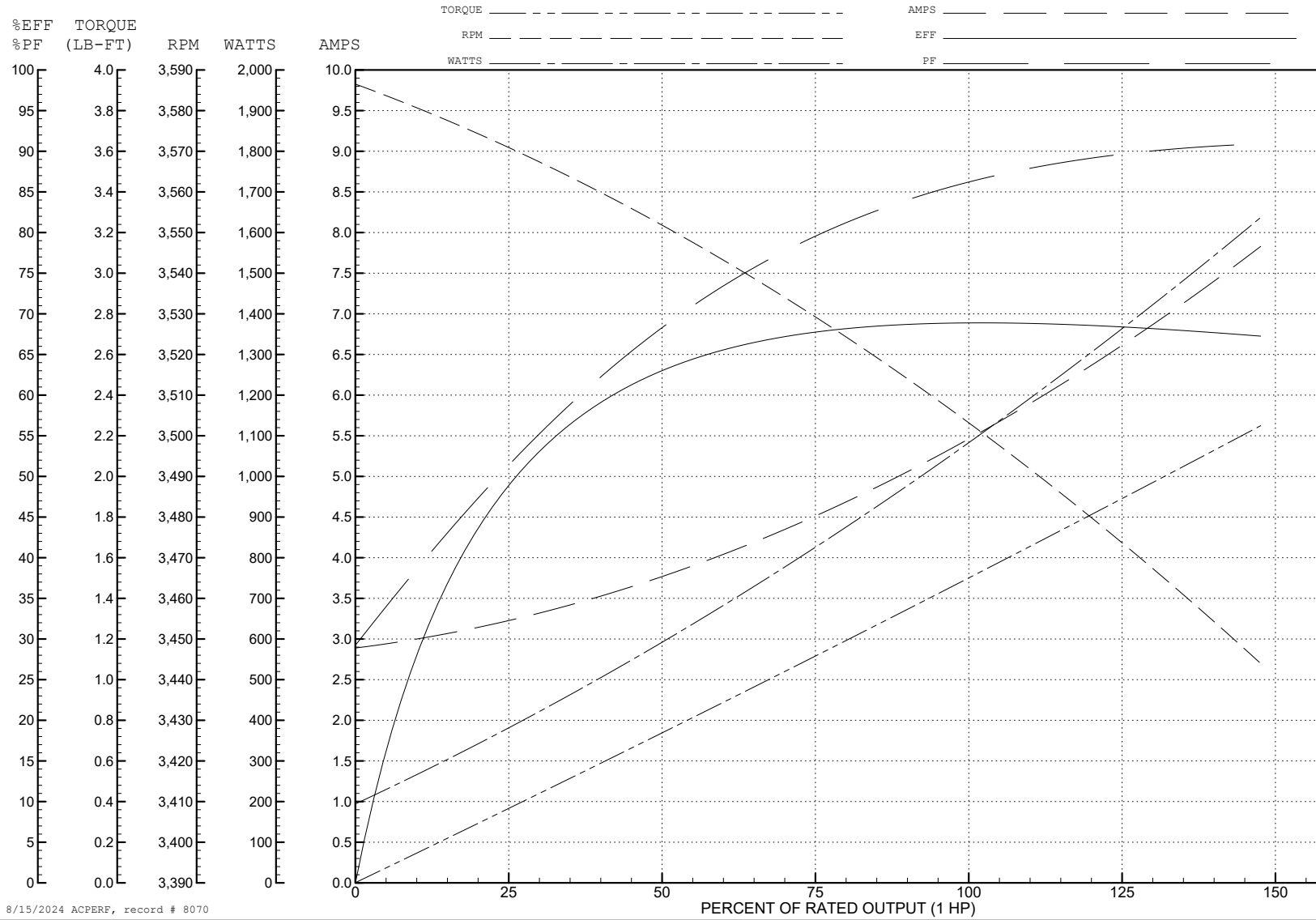
ABB Motors and Mechanical Inc.

WINDING # 35WG0498

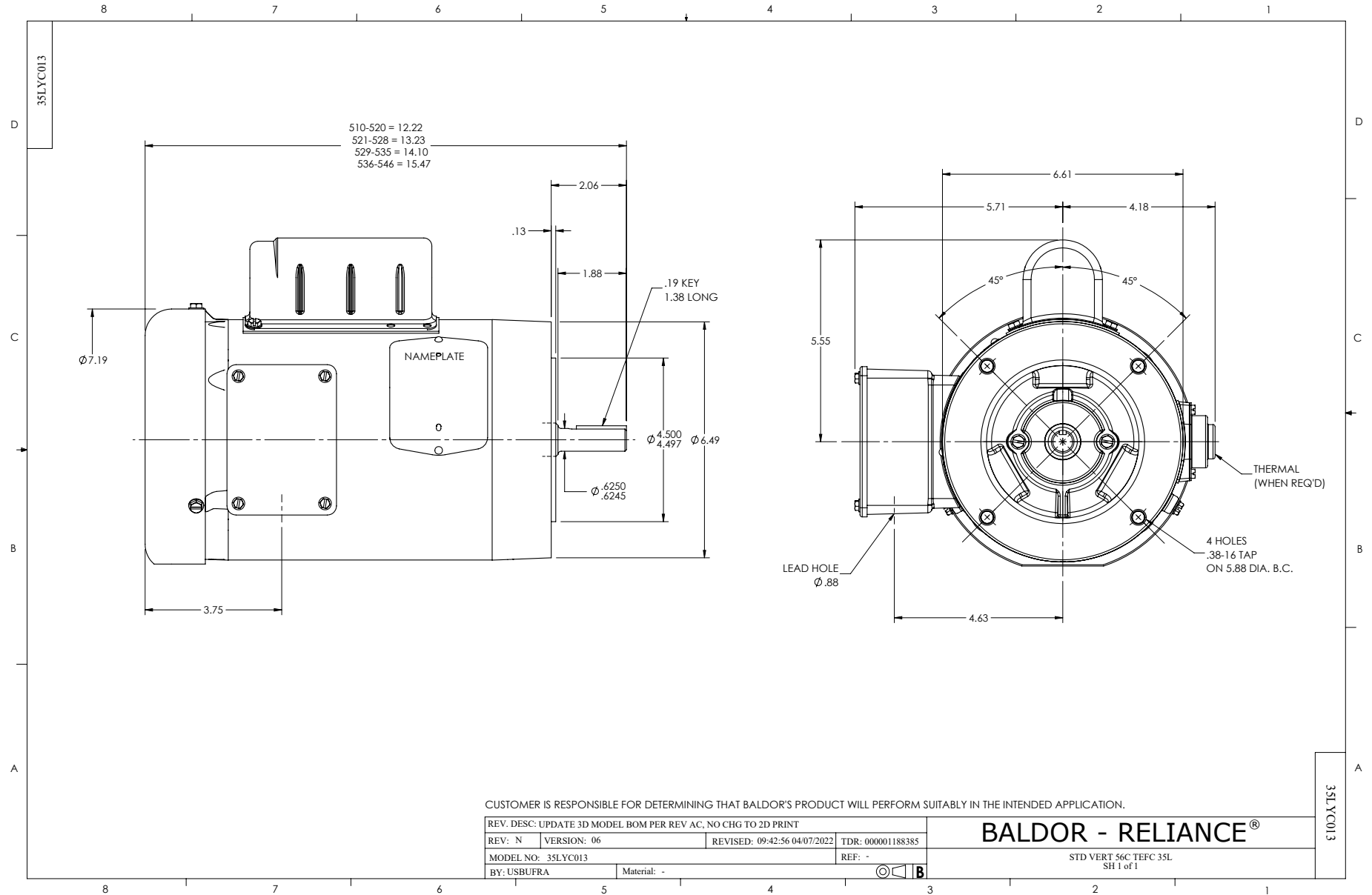
Typical performance - not guaranteed values.

1 HP 1 PH 60 HZ 3450 RPM 230 V 3524L

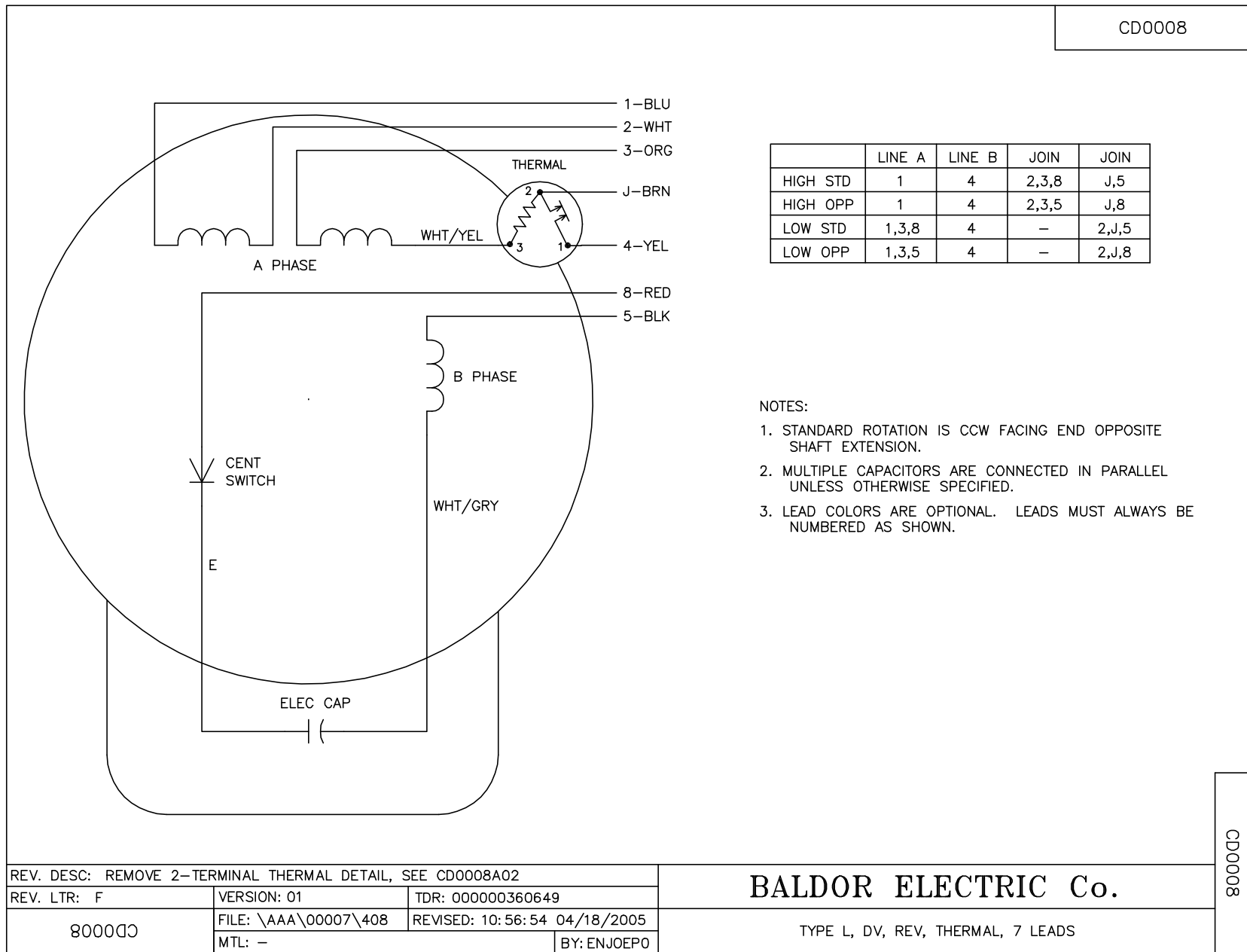
TORQUES (LB-FT): PO=4.1 PU=3.1 LR=5 LRA=38.5



8/15/2024 ACPERF, record # 8070



CD0008



	LINE A	LINE B	JOIN	JOIN
HIGH STD	1	4	2,3,8	J,5
HIGH OPP	1	4	2,3,5	J,8
LOW STD	1,3,8	4	-	2,J,5
LOW OPP	1,3,5	4	-	2,J,8

NOTES:

1. STANDARD ROTATION IS CCW FACING END OPPOSITE SHAFT EXTENSION.
2. MULTIPLE CAPACITORS ARE CONNECTED IN PARALLEL UNLESS OTHERWISE SPECIFIED.
3. LEAD COLORS ARE OPTIONAL. LEADS MUST ALWAYS BE NUMBERED AS SHOWN.

REV. DESC: REMOVE 2-TERMINAL THERMAL DETAIL, SEE CD0008A02		
REV. LTR: F	VERSION: 01	TDR: 000000360649
800000	FILE: \AAA\00007\408	REVISED: 10:56:54 04/18/2005
	MTL: -	BY: ENJOEPO

BALDOR ELECTRIC Co.

TYPE L, DV, REV, THERMAL, 7 LEADS

CD0008