



---

# Customer information packet

## VL3509-50

1/.75KW, 2890RPM, 1PH, 50HZ, 56C, 3524LC, TEFC

Class - None

Division - Not Applicable

## Specifications

Enclosure	TEFC
Frame	56C
Frame Material	Steel
Frequency	50.00 Hz
Haz Area Class and Group	None
Haz Area Division	Not Applicable
Motor Letter Type	Cap Start, Cap Run
Output @ Frequency	.750 KW @ 50 HZ
Phase	1
Synchronous Speed @ Frequency	3000 RPM @ 50 HZ
Voltage @ Frequency	110.0 V @ 50 HZ 220.0 V @ 50 HZ
Agency Approvals	C UR US CE CURUS UKCA WEEE
Ambient Temperature	40 °C
Auxiliary Box	NO AUXILLARY BOX
Auxiliary Box Lead Termination	None
Base Indicator	No Mounting
Bearing Grease Type	Polyrex EM (-20F +300F)
Blower	None
Current @ Voltage	9.400 A @ 110.0 V 4.700 A @ 220.0 V
Design Code	-
Drip Cover	No Drip Cover
Duty Rating	CONT
Efficiency @ 100% Load	77.4 %
Electrically Isolated Bearing	Not Electrically Isolated
Feedback Device	NO FEEDBACK
Front Shaft Indicator	None

## Part detail

Revision	D
Type	AC
Mech. spec.	35E022
Base	
Status	PRD/A
Elec. spec.	35WGG630
Layout	35LYE022
Eff. date	09-17-2025
CD Diagram	CD0055
Poles	02
Leads	4#16 A PH,2#18 B PH
Proprietary	False
Created date	10-10-2023

Heater Indicator	No Heater
High Voltage Full Load Amps	4.7 a
Insulation Class	B
Inverter Code	Not Inverter
KVA Code	J
Lifting Lugs	No Lifting Lugs
Locked Bearing Indicator	Locked Bearing
Motor Lead Quantity/Wire Size	4 @ 16 AWG, A PH
Motor Lead Termination	Flying Leads
Motor Standards	NEMA
Motor Type	3524LC
Mounting Arrangement	F1
Number of Poles	2
Overall Length	13.23 IN
Power Factor	95
Product Family	General Purpose
Pulley End Bearing Type	Ball
Pulley Face Code	C-Face
Pulley Shaft Indicator	Standard
Rodent Screen	None
Service Factor	1.25
Shaft Diameter	0.625 IN
Shaft Ground Indicator	No Shaft Grounding
Shaft Rotation	Reversible
Shaft Slinger Indicator	No Slinger
Speed	2890 rpm
Speed Code	Single Speed
Starting Method	Direct on line
Thermal Device - Bearing	None
Thermal Device - Winding	None
Vibration Sensor Indicator	No Vibration Sensor
Winding Thermal 1	None
Winding Thermal 2	None

**Nameplate**

<b>NP1372L</b>										
<b>CAT.NO.</b>	VL3509-50									
<b>SPEC.</b>	35E022G630									
<b>HP</b>	1/.75KW									
<b>VOLTS</b>	110/220									
<b>AMP</b>	9.4/4.7									
<b>R.P.M. (1/MIN)</b>	2890									
<b>FRAME</b>	56C		<b>HZ</b>	50		<b>PH</b>	1			
<b>SER.F.</b>	1.25	<b>CODE</b>	J	<b>DES</b>	-	<b>CL</b>	B			
<b>NEMA-NOM-EFF</b>	77.4	<b>PF</b>	95							
<b>RATING</b>	40C AMB-S1 CONT									
<b>CC</b>			IP44 IC411 26KG							
<b>DE</b>	6205	<b>ODE</b>	6203							
<b>ENCL</b>	TEFC	<b>SN</b>								
	IE2-50HZ 76.7(75%),72.9(50%)									

**AC Induction Motor Performance Data**

Record # 101537

Typical performance - not guaranteed values

<b>Winding: 35WGG630-R001</b>		<b>Type: 3524LC</b>		<b>Enclosure: TEFC</b>	
<b>Nameplate Data</b>			<b>220 V, 50 Hz: High Voltage Connection</b>		
<b>Rated Output (KW)</b>	.75	<b>Full Load Torque</b>	1.851 LB-FT		
<b>Volts</b>	110/220	<b>Start Configuration</b>	direct on line		
<b>Full Load Amps</b>	9.4/4.7	<b>Breakdown Torque</b>	4.41 LB-FT		
<b>R.P.M.</b>	2890	<b>Pull-up Torque</b>	3.89 LB-FT		
<b>Hz</b>	50 <b>Phase</b>	1	<b>Locked-rotor Torque</b>	5.54 LB-FT	
<b>NEMA Design Code</b>	- <b>KVA Code</b>	J	<b>Starting Current</b>	34.1 A	
<b>Service Factor (S.F.)</b>	1.25		<b>No-load Current</b>	1.22 A	
<b>NEMA Nom. Eff.</b>	77.4 <b>Power Factor</b>	0	<b>Line-line Res. @ 25°C</b>	2.0032 Ω A Ph 1.7472 Ω B Ph	
<b>Rating - Duty</b>	40C AMB-CONT		<b>Temp. Rise @ Rated Load</b>	47°C	
<b>S.F. Amps</b>	11.6/5.8		<b>Temp. Rise @ S.F. Load</b>	63°C	

**Load Characteristics 220 V, 50 Hz, 0.75 KW**

<b>% of Rated Load</b>	<b>25</b>	<b>50</b>	<b>75</b>	<b>100</b>	<b>125</b>	<b>150</b>	<b>S.F.</b>
<b>Power Factor</b>	82	90	94	95	95	95	95
<b>Efficiency</b>	59.8	72.9	76.7	78	76.7	74.6	76.7
<b>Speed</b>	2969.7	2947.7	2923.2	2894.6	2863.5	2822.9	2864
<b>Line amperes</b>	1.85	2.68	3.61	4.68	5.85	7.19	5.85

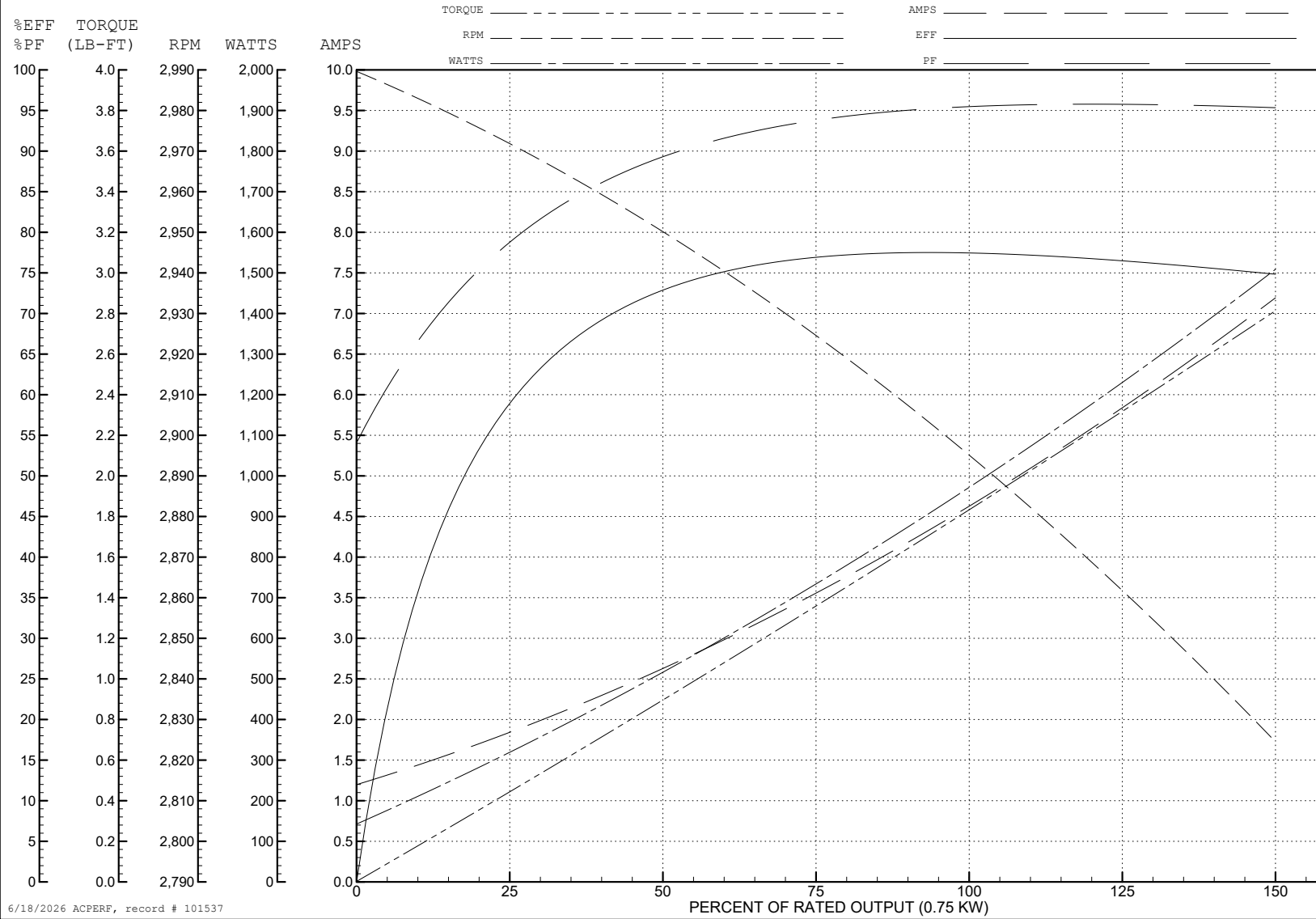
ABB Motors and Mechanical Inc.

WINDING # 35WGG630

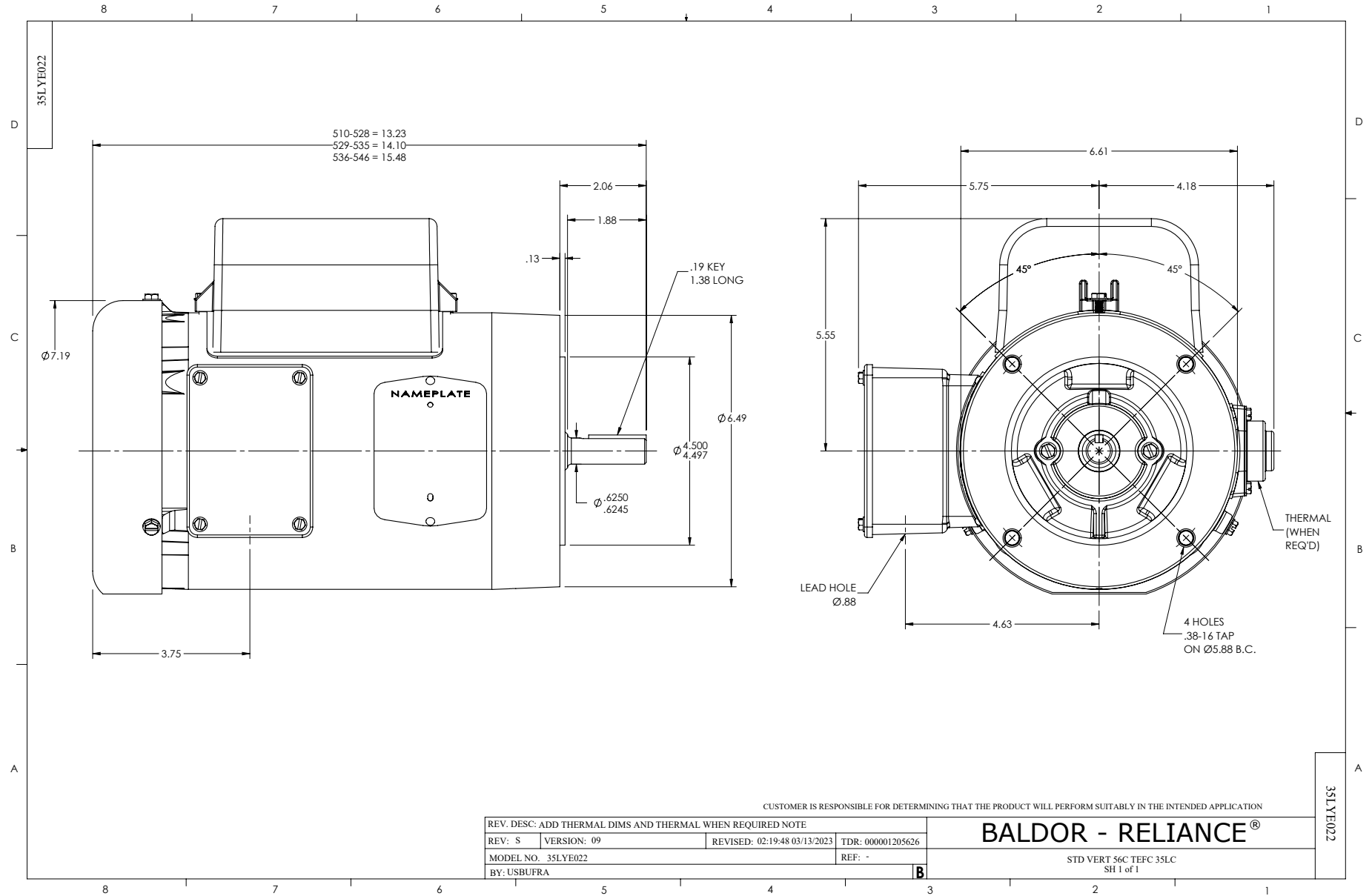
Typical performance - not guaranteed values.

0.75 KW 1 PH 50 HZ 2890 RPM 220 V 3524LC

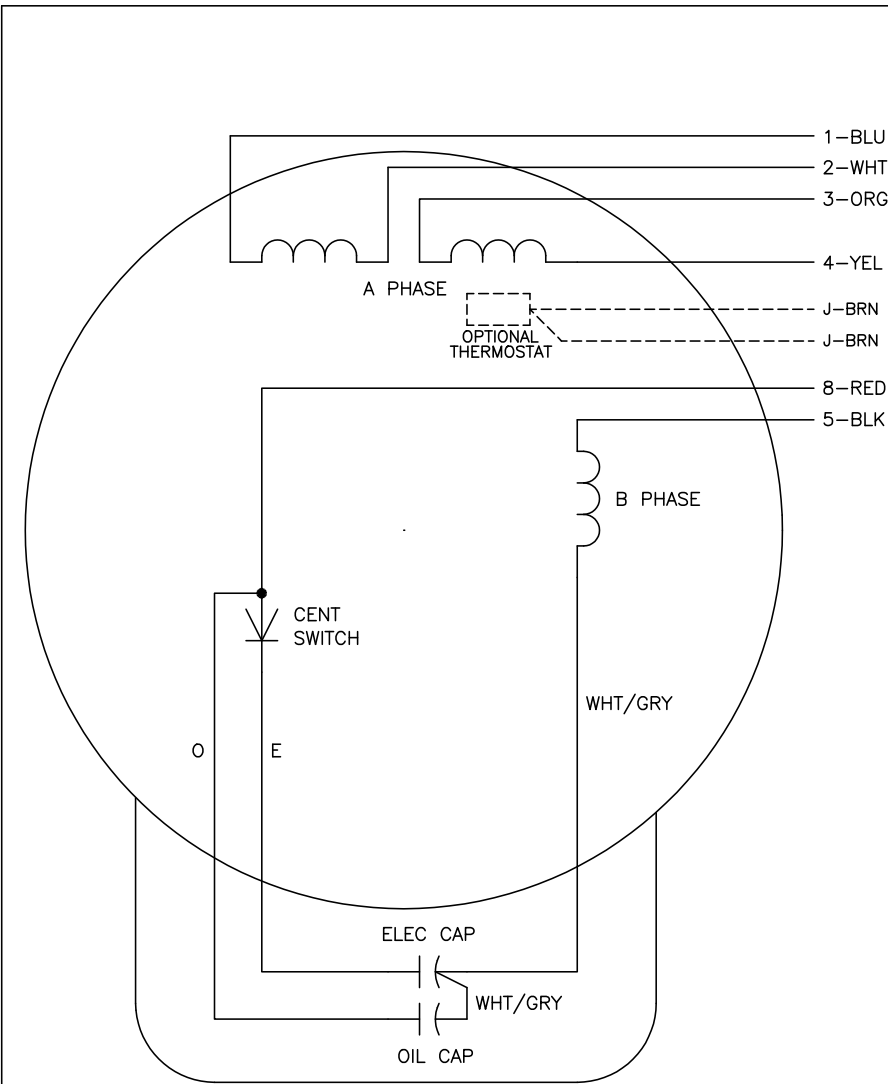
TORQUES (LB-FT): PO=4.41 PU=3.89 LR=5.54 LRA=34.1



6/18/2026 ACPERF, record # 101537



CD0055



	LINE A	LINE B	JOIN
HIGH STD	1	4,5	2,3,8
HIGH OPP	1	4,8	2,3,5
LOW STD	1,3,8	2,4,5	-
LOW OPP	1,3,5	2,4,8	-

NOTES:

1. STANDARD ROTATION IS CCW FACING END OPPOSITE SHAFT EXTENSION.
2. OPTIONAL THERMOSTAT IS PROVIDED WHEN SPECIFIED.
3. MULTIPLE CAPACITORS ARE CONNECTED IN PARALLEL UNLESS OTHERWISE SPECIFIED.
4. LEAD COLORS ARE OPTIONAL. LEADS MUST ALWAYS BE NUMBERED AS SHOWN.

REV. DESC: REVISE TO SHOW OPTIONAL COLORS			
REV. LTR: D	BY: JLP	REVISED: 04/08/99 1:17	TDR: 0178636
C00000		FILE: AAA00007414	MDL: -
		MTL: -	

**BALDOR ELECTRIC Co.**

TYPE LC, DV, REV, 6 LEADS

CD0055