

BALDOR • RELIANCE

Customer information packet

VL3507-50

.75/.56KW IEC60034-30HP, 1415 1/MIN IP54

Class - None

Division - Not Applicable

Specifications

Enclosure	TEFC
Frame	56C
Frame Material	Steel
Frequency	50.00 Hz
Motor Letter Type	Cap Start, Induction Run
Output @ Frequency	.750 HP @ 50 HZ
Phase	1
Synchronous Speed @ Frequency	1500 RPM @ 50 HZ
Voltage @ Frequency	110.0 V @ 50 HZ 220.0 V @ 50 HZ
XP Class and Group	None
XP Division	Not Applicable
Agency Approvals	CSA UR WEEE CE
Ambient Temperature	40 °C
Auxillary Box	No Auxillary Box
Auxillary Box Lead Termination	None
Base Indicator	No Mounting
Bearing Grease Type	Polyrex EM (-20F +300F)
Blower	None
Current @ Voltage	4.800 A @ 220.0 V 9.600 A @ 110.0 V
Design Code	N
Drip Cover	No Drip Cover
Duty Rating	CONT
Efficiency @ 100% Load	66.0 %
Electrically Isolated Bearing	Not Electrically Isolated
Feedback Device	NO FEEDBACK
Front Shaft Indicator	None
Heater Indicator	No Heater

Part detail

Revision	-
Type	AC
Mech. spec.	35C013
Base	
Status	PRD/A
Elec. spec.	35WGG388
Layout	35LYC013
Eff. date	10-10-2022
CD Diagram	CD0001
Poles	04
Leads	6#18
Proprietary	False
Created date	08-01-2022

High Voltage Full Load Amps	4.8 a
Insulation Class	F
Inverter Code	Not Inverter
KVA Code	K
Lifting Lugs	No Lifting Lugs
Locked Bearing Indicator	Locked Bearing
Motor Lead Quantity/Wire Size	6 @ 18 AWG
Motor Lead Termination	Flying Leads
Motor Standards	NEMA
Motor Type	3524L
Mounting Arrangement	F1
Number of Poles	4
Overall Length	13.25 IN
Power Factor	79
Product Family	General Purpose
Pulley End Bearing Type	Ball
Pulley Face Code	C-Face
Pulley Shaft Indicator	Standard
Rodent Screen	None
Service Factor	1.25
Shaft Diameter	0.625 IN
Shaft Ground Indicator	No Shaft Grounding
Shaft Rotation	Reversible
Shaft Slinger Indicator	No Slinger
Speed	1415 rpm
Speed Code	Single Speed
Starting Method	Direct on line
Thermal Device - Bearing	None
Thermal Device - Winding	None
Vibration Sensor Indicator	No Vibration Sensor
Winding Thermal 1	None
Winding Thermal 2	None

Nameplate

NP1372L									
CAT.NO.	VL3507-50								
SPEC.	35C13G388								
HP	.75/.56KW IEC60034-30								
VOLTS	110/220								
AMP	9.6/4.8 PF-76								
RPM	1415 1/MIN IP54 IC411 18KG								
FRAME	56C		HZ	50		PH	1		
SER.F.	1.25	CODE	K	DES	N	CL	F		
NEMA-NOM-EFF	66	PF	79						
RATING	40C AMB-CONT								
CC		USABLE AT 208V							
DE	6205	ODE	6203						
ENCL	TEFC	SN							
	SFA 12/6								

AC Induction Motor Performance Data

Record # 88904

Typical performance - not guaranteed values

Winding: 35WGG388-R002		Type: 3524L	Enclosure: TEFC
Nameplate Data		110 V, 50 Hz: Low Voltage Connection	
Rated Output (HP)	.75	Full Load Torque	2.8 LB-FT
Volts	110/220	Start Configuration	direct on line
Full Load Amps	9.6/4.8	Breakdown Torque	6.31 LB-FT
R.P.M.	1415	Pull-up Torque	5.78 LB-FT
Hz	50 Phase 1	Locked-rotor Torque	8.93 LB-FT
NEMA Design Code	N KVA Code K	Starting Current	55.04 A
Service Factor (S.F.)	1.25	No-load Current	4.8 A
NEMA Nom. Eff.	66 Power Factor 79	Line-line Res. @ 25°C	0.86 Ω A Ph 1.63 Ω B Ph
Rating - Duty	40C AMB-CONT	Temp. Rise @ Rated Load	84°C
S.F. Amps	12.2/6.1	Temp. Rise @ S.F. Load	108°C
		Locked-rotor Power Factor	97.8
		Rotor inertia	0.174 lb-ft ²

Load Characteristics 110 V, 50 Hz, 0.75 HP

% of Rated Load	25	50	75	100	125	150	S.F.
Power Factor	44	63	75	82	86	83	86
Efficiency	57.4	67.6	69.4	67.4	61.8	1	61.8
Speed	1482	1464	1442	1414	1370	52.54	1370
Line amperes	5.17	6.04	7.39	9.22	11.82	29.86	11.8

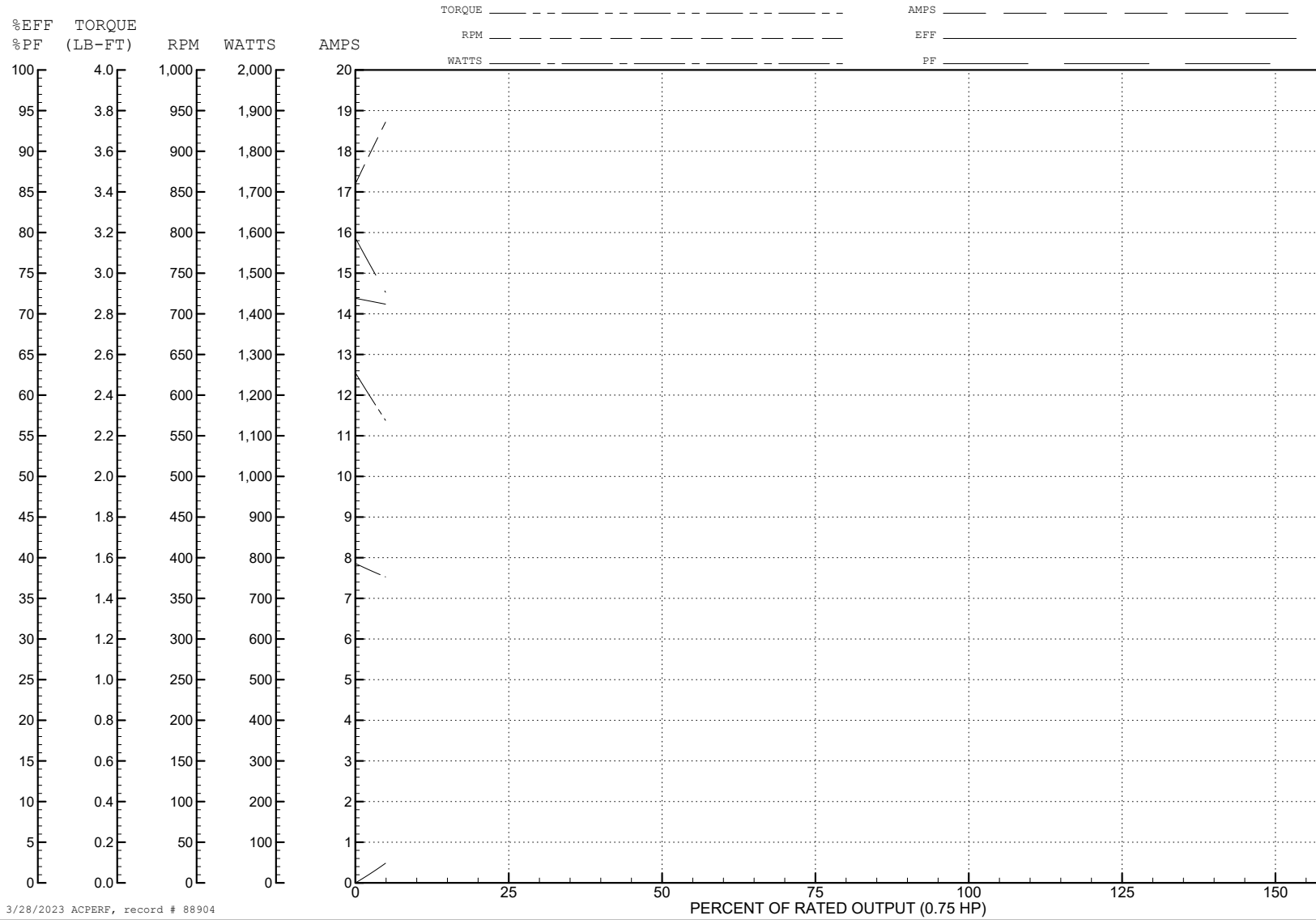
ABB Motors and Mechanical Inc.

WINDING # 35WGG388

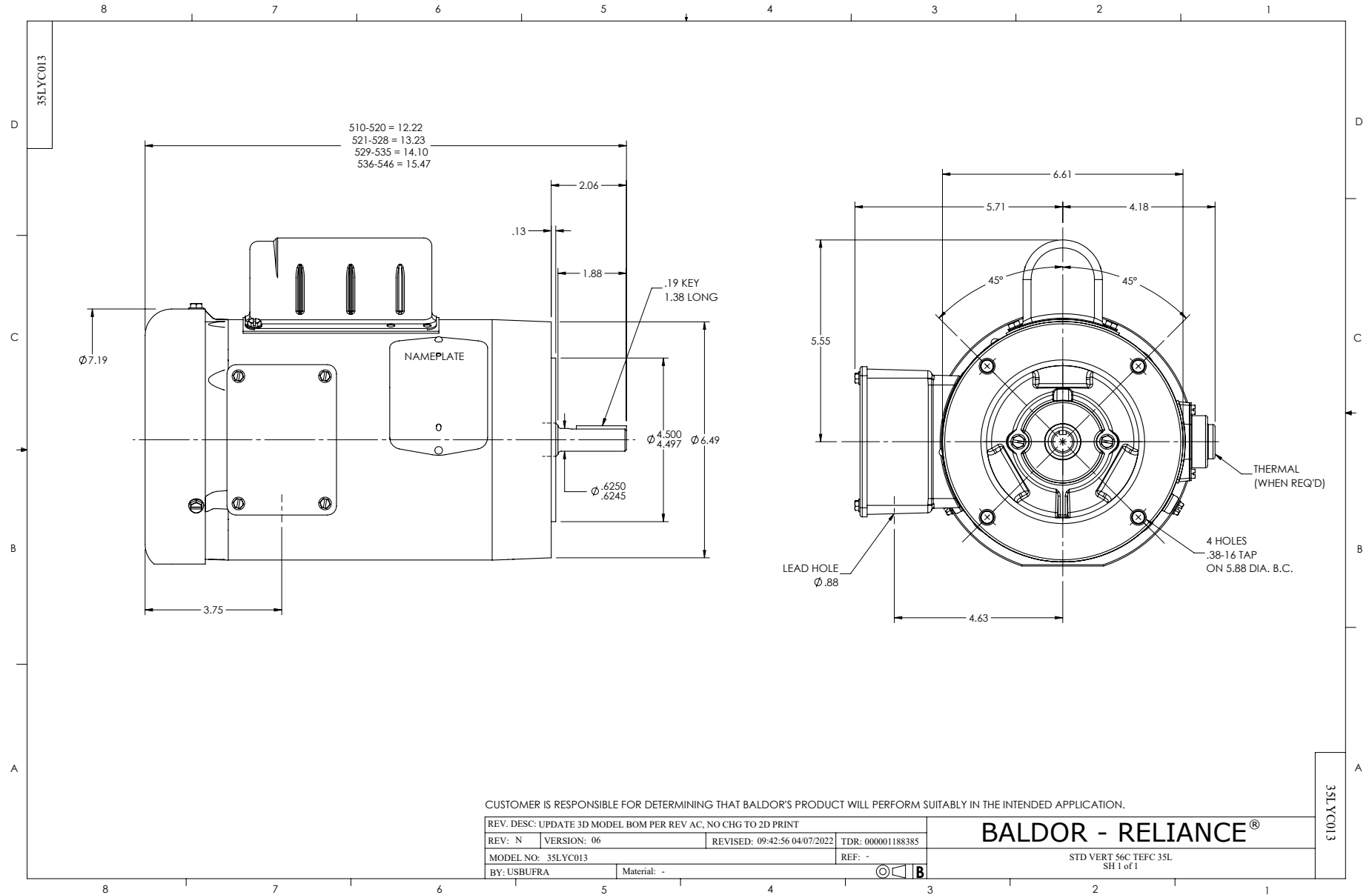
0.75 HP 1 PH 50 HZ 1415 RPM 110 V 3524L

Typical performance - not guaranteed values.

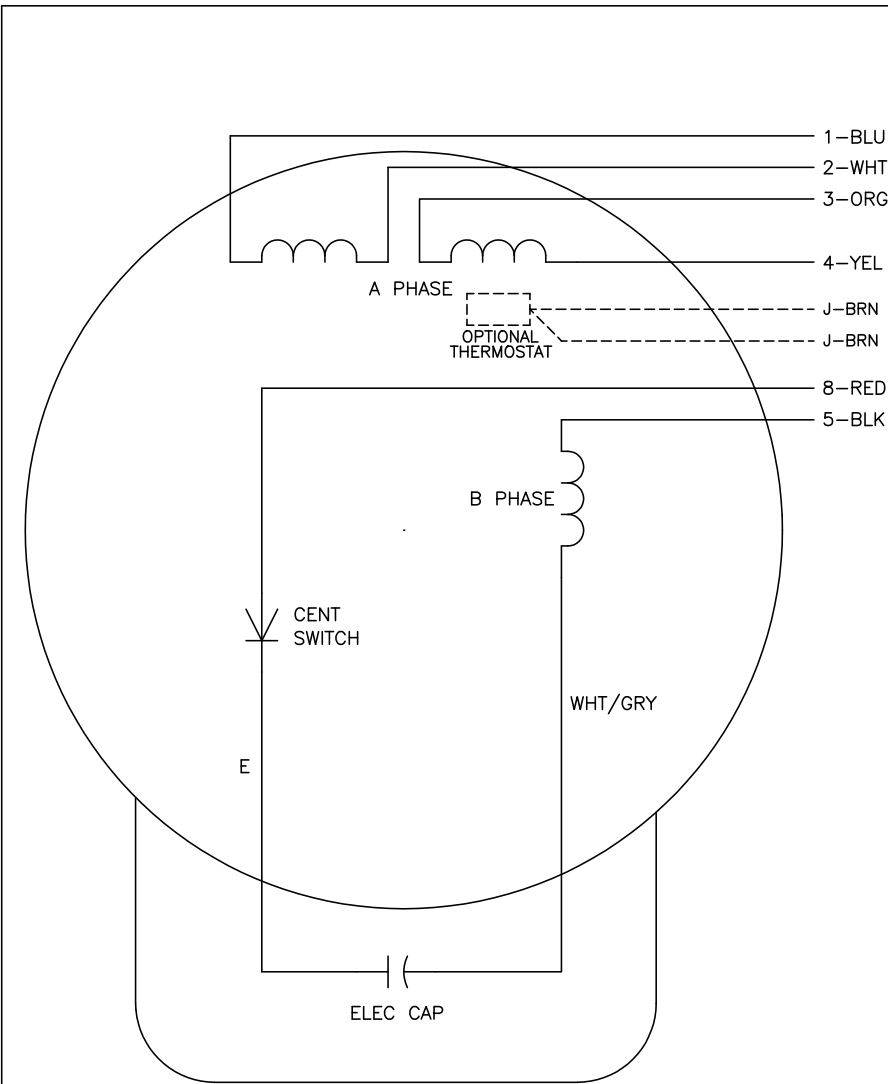
TORQUES (LB-FT): PO=6.31 PU=5.78 LR=8.93 LRA=55.04



3/28/2023 ACPERF, record # 88904



CD0001



	LINE A	LINE B	JOIN
HIGH STD	1	4,5	2,3,8
HIGH OPP	1	4,8	2,3,5
LOW STD	1,3,8	2,4,5	-
LOW OPP	1,3,5	2,4,8	-

NOTES:

1. STANDARD ROTATION IS CCW FACING END OPPOSITE SHAFT EXTENSION.
2. OPTIONAL THERMOSTAT IS PROVIDED WHEN SPECIFIED.
3. MULTIPLE CAPACITORS ARE CONNECTED IN PARALLEL UNLESS OTHERWISE SPECIFIED.
4. LEAD COLORS ARE OPTIONAL. LEADS MUST ALWAYS BE NUMBERED AS SHOWN.

REV. DESC: REVISE TO SHOW OPTIONAL COLORS			
REV. LTR: D	BY: JLP	REVISED: 04/08/99 1:16	TDR: 0178636
100000		FILE: AAA00007405	MDL: -
		MTL: -	

BALDOR ELECTRIC Co.

TYPE L, DV, REV, 6 LEADS

CD0001