



Customer information packet

VL3506-50

.75/.55KW, 2850RPM, 1PH, 50HZ, 56C, 3520LC, TE

Class - None

Division - Not Applicable

Specifications

Enclosure	TEFC
Frame	56C
Frame Material	Steel
Frequency	50.00 Hz
Haz Area Class and Group	None
Haz Area Division	Not Applicable
Motor Letter Type	Cap Start, Cap Run
Output @ Frequency	.550 KW @ 50 HZ
Phase	1
Synchronous Speed @ Frequency	3000 RPM @ 50 HZ
Voltage @ Frequency	110.0 V @ 50 HZ 220.0 V @ 50 HZ
Agency Approvals	C UR US CE CURUS UKCA WEEE
Ambient Temperature	40 °C
Auxillary Box	No Auxillary Box
Auxillary Box Lead Termination	None
Base Indicator	No Mounting
Bearing Grease Type	Polyrex EM (-20F +300F)
Blower	None
Current @ Voltage	7.200 A @ 110.0 V 3.600 A @ 220.0 V
Design Code	-
Drip Cover	No Drip Cover
Duty Rating	CONT
Efficiency @ 100% Load	74.1 %
Electrically Isolated Bearing	Not Electrically Isolated
Feedback Device	NO FEEDBACK
Front Shaft Indicator	None

Part detail

Revision	C
Type	AC
Mech. spec.	35E022
Base	
Status	PRD/A
Elec. spec.	35WGG629
Layout	35LYE022
Eff. date	05-07-2024
CD Diagram	CD0055
Poles	02
Leads	6#18
Proprietary	False
Created date	10-09-2023

Heater Indicator	No Heater
High Voltage Full Load Amps	3.6 a
Insulation Class	B
Inverter Code	Not Inverter
KVA Code	K
Lifting Lugs	No Lifting Lugs
Locked Bearing Indicator	Locked Bearing
Motor Lead Quantity/Wire Size	6 @ 18 AWG
Motor Lead Termination	Flying Leads
Motor Standards	NEMA
Motor Type	3520LC
Mounting Arrangement	F1
Number of Poles	2
Overall Length	13.23 IN
Power Factor	95
Product Family	General Purpose
Pulley End Bearing Type	Ball
Pulley Face Code	C-Face
Pulley Shaft Indicator	Standard
Rodent Screen	None
Service Factor	1.25
Shaft Diameter	0.625 IN
Shaft Ground Indicator	No Shaft Grounding
Shaft Rotation	Reversible
Shaft Slinger Indicator	No Slinger
Speed	2850 rpm
Speed Code	Single Speed
Starting Method	Direct on line
Thermal Device - Bearing	None
Thermal Device - Winding	None
Vibration Sensor Indicator	No Vibration Sensor
Winding Thermal 1	None
Winding Thermal 2	None

Nameplate

NP1372L									
CAT.NO.	VL3506-50								
SPEC.	35E022G629								
HP	.75/.55KW								
VOLTS	110/220								
AMP	7.2/3.6								
R.P.M. (1/MIN)	2850								
FRAME	56C		HZ	50		PH	1		
SER.F.	1.25	CODE	K	DES	-	CL	B		
NEMA-NOM-EFF	74.1	PF	95						
RATING	40C AMB-S1 CONT								
CC		IP44 IC411 25KG							
DE	6205	ODE	6203						
ENCL	TEFC	SN							
	IE2-50HZ 71(75%),65(50%)								

AC Induction Motor Performance Data

Record # 101531

Typical performance - not guaranteed values

Winding: 35WGG629-R001		Type: 3520LC	Enclosure: TEFC	
Nameplate Data			220 V, 50 Hz: High Voltage Connection	
Rated Output (KW)	.55	Full Load Torque	1.355 LB-FT	
Volts	110/220	Start Configuration	direct on line	
Full Load Amps	7.2/3.6	Breakdown Torque	4.76 LB-FT	
R.P.M.	2910	Pull-up Torque	3.04 LB-FT	
Hz	50 Phase	1	Locked-rotor Torque	4.77 LB-FT
NEMA Design Code	- KVA Code	K	Starting Current	29.3 A
Service Factor (S.F.)	1.25		No-load Current	1.05 A
NEMA Nom. Eff.	74.1 Power Factor	95	Line-line Res. @ 25°C	2.8207 Ω A Ph 2.098 Ω B Ph
Rating - Duty	40C AMB-CONT		Temp. Rise @ Rated Load	35°C
S.F. Amps	8.8/4.4		Temp. Rise @ S.F. Load	42°C

Load Characteristics 220 V, 50 Hz, 0.55 KW

% of Rated Load	25	50	75	100	125	150	S.F.
Power Factor	85	91	94	95	96	96	96
Efficiency	50.4	65.6	72.3	74.9	75.7	74.5	75.7
Speed	2971.6	2953.1	2932.1	2910.2	2883.5	2850.7	2884
Line amperes	1.51	2.11	2.83	3.57	4.38	5.36	4.38

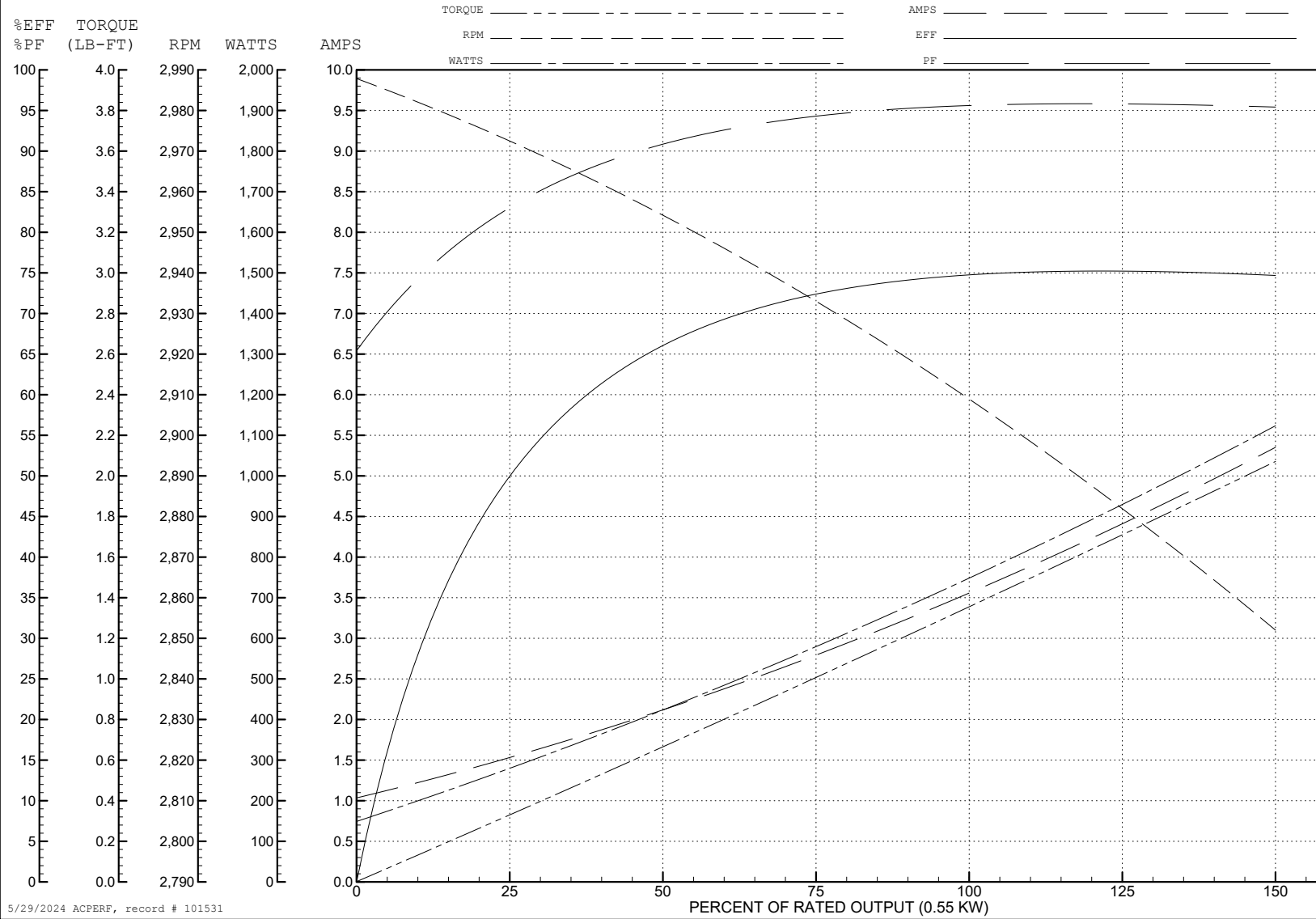
ABB Motors and Mechanical Inc.

WINDING # 35WGG629

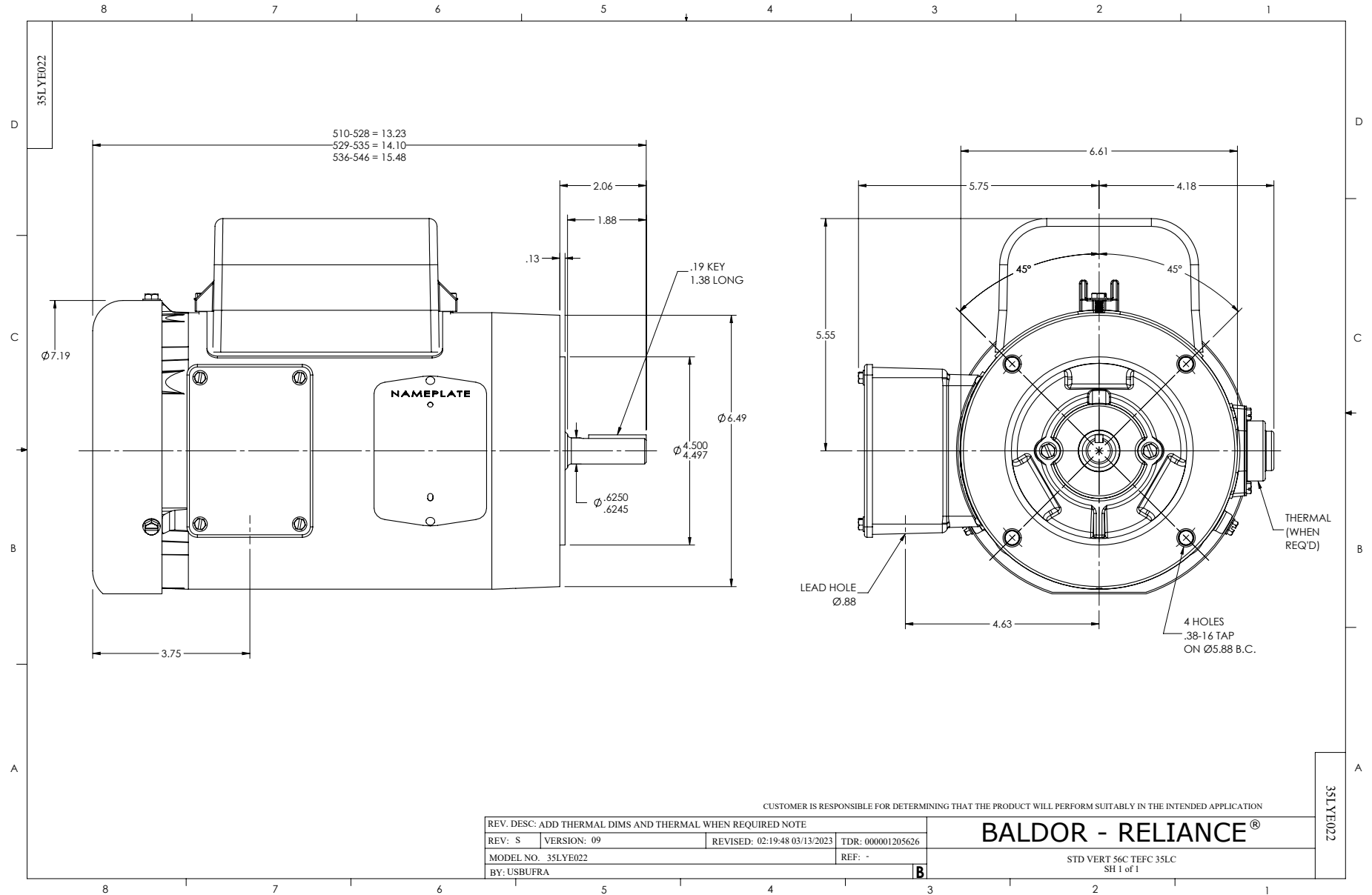
Typical performance - not guaranteed values.

0.55 KW 1 PH 50 HZ 2910 RPM 220 V 3520LC

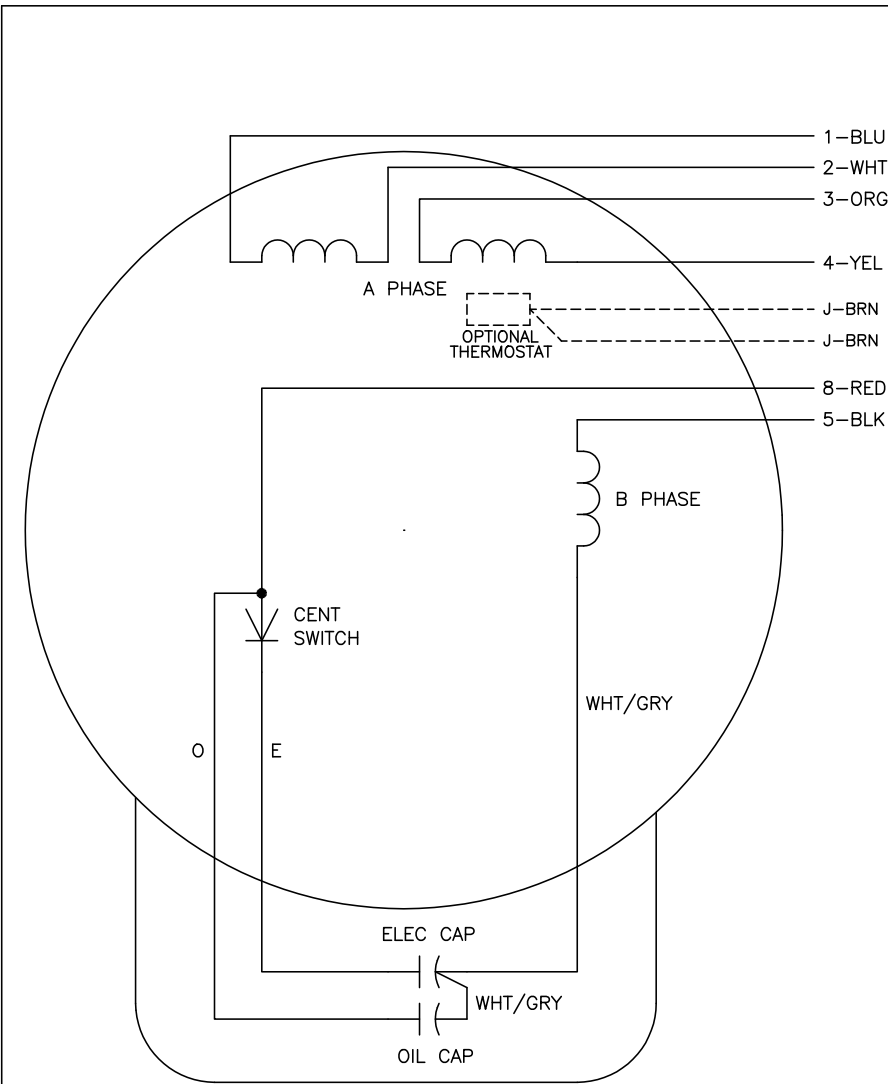
TORQUES (LB-FT): PO=4.76 PU=3.04 LR=4.77 LRA=29.3



5/29/2024 ACPERF, record # 101531



CD0055



	LINE A	LINE B	JOIN
HIGH STD	1	4,5	2,3,8
HIGH OPP	1	4,8	2,3,5
LOW STD	1,3,8	2,4,5	-
LOW OPP	1,3,5	2,4,8	-

NOTES:

1. STANDARD ROTATION IS CCW FACING END OPPOSITE SHAFT EXTENSION.
2. OPTIONAL THERMOSTAT IS PROVIDED WHEN SPECIFIED.
3. MULTIPLE CAPACITORS ARE CONNECTED IN PARALLEL UNLESS OTHERWISE SPECIFIED.
4. LEAD COLORS ARE OPTIONAL. LEADS MUST ALWAYS BE NUMBERED AS SHOWN.

CD0055

REV. DESC: REVISE TO SHOW OPTIONAL COLORS			
REV. LTR: D	BY: JLP	REVISED: 04/08/99 1:17	TDR: 0178636
C00000		FILE: AAA00007414	MDL: -
		MTL: -	

BALDOR ELECTRIC Co.

TYPE LC, DV, REV, 6 LEADS