

ABB BALDOR RELIANCE III

Customer information packet

VL3503CNF

.5HP/3450RPM/1PH/TEFC/NEMA 56C

Class - None

Division - Not Applicable

Specifications

Enclosure	TEFC
Frame	56C
Frame Material	Steel
Frequency	60.00 Hz
Haz Area Class and Group	None
Haz Area Division	Not Applicable
Motor Letter Type	Cap Start, Induction Run
Output @ Frequency	.500 HP @ 60 HZ
Phase	1
Synchronous Speed @ Frequency	3600 RPM @ 60 HZ
Voltage @ Frequency	115.0 V @ 60 HZ
Agency Approvals	UR CSA
Ambient Temperature	40 °C
Auxiliary Box	NO AUXILLARY BOX
Auxiliary Box Lead Termination	None
Base Indicator	No Mounting
Bearing Grease Type	Polyrex EM (-20F +300F)
Blower	None
Current @ Voltage	7.400 A @ 115.0 V
Design Code	N
Drip Cover	No Drip Cover
Duty Rating	CONT
Efficiency @ 100% Load	57.0 %
Electrically Isolated Bearing	Not Electrically Isolated
Feedback Device	NO FEEDBACK
Front Face Code	Standard
Front Shaft Indicator	None
Heater Indicator	No Heater
High Voltage Full Load Amps	7.4 a
Insulation Class	B
Inverter Code	Not Inverter

Part Detail

Revision	Z
Type	AC
Mech. spec.	34G200
Base	
Status	PRD/A
Elec. spec.	34WG3906
Layout	34LYG200
Eff. date	01-13-2025
CD Diagram	CD0017A01
Poles	02
Leads	2#16 A PH,2#18 B PH
Proprietary	False
Created date	01-01-0001

KVA Code	K
Lifting Lugs	No Lifting Lugs
Locked Bearing Indicator	Locked Bearing
Motor Lead Exit	Ko Box
Motor Lead Quantity/Wire Size	2 @ 16 AWG, A PH
Motor Lead Termination	Cord And Plug
Motor Standards	NEMA
Motor Type	3416L
Mounting Arrangement	F1
Number of Poles	2
Overall Length	11.38 IN
Power Factor	71
Product Family	General Purpose
Pulley End Bearing Type	Ball
Pulley Face Code	C-Face
Pulley Shaft Indicator	Standard
Rodent Screen	None
RoHS Status	ROHS COMPLIANT
Service Factor	1.25
Shaft Diameter	0.625 IN
Shaft Extension Location	Pulley End
Shaft Ground Indicator	No Shaft Grounding
Shaft Rotation	Reversible: Connected OPP STD
Shaft Slinger Indicator	No Slinger
Speed	3450 rpm
Speed Code	Single Speed
Starting Method	Direct on line
Thermal Device - Bearing	None
Thermal Device - Winding	None
Vibration Sensor Indicator	No Vibration Sensor
Winding Thermal 1	None
Winding Thermal 2	None

Nameplate

NP1256L									
CAT.NO.	VL3503CNF								
SPEC.	34G200-3906G1								
HP	.5								
VOLTS	115								
AMP	7.4								
RPM	3450								
FRAME	56C	HZ	60	PH	1				
SER.F.	1.25	CODE	K	DES	N	CLASS	B		
NEMA-NOM-EFF	57	PF	71						
RATING	40C AMB-CONT								
CC									
DE	6203	ODE	6203						
ENCL	TEFC	SN							
	SFA 8.8								

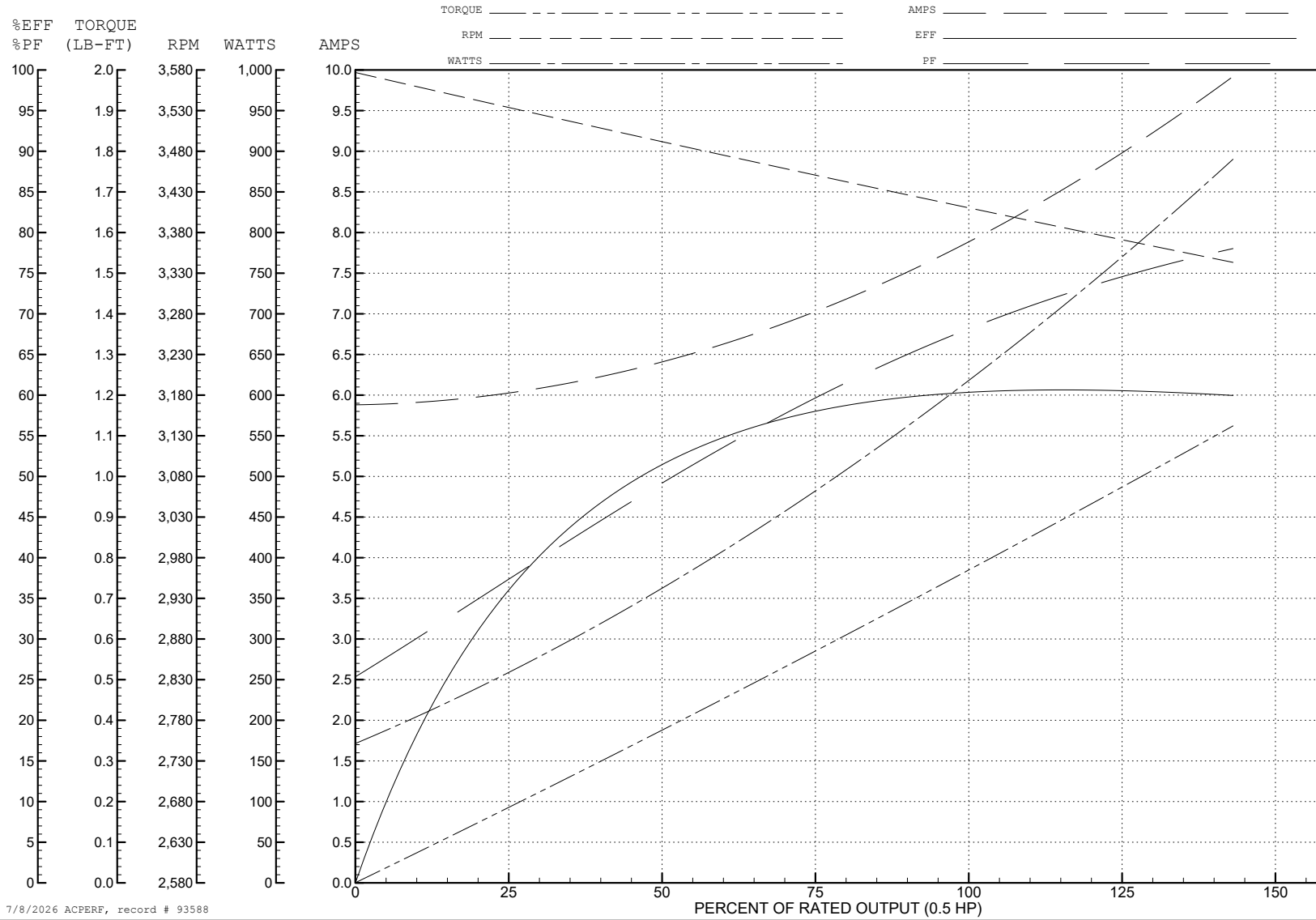
ABB Motors and Mechanical Inc.

WINDING # 34WG3906

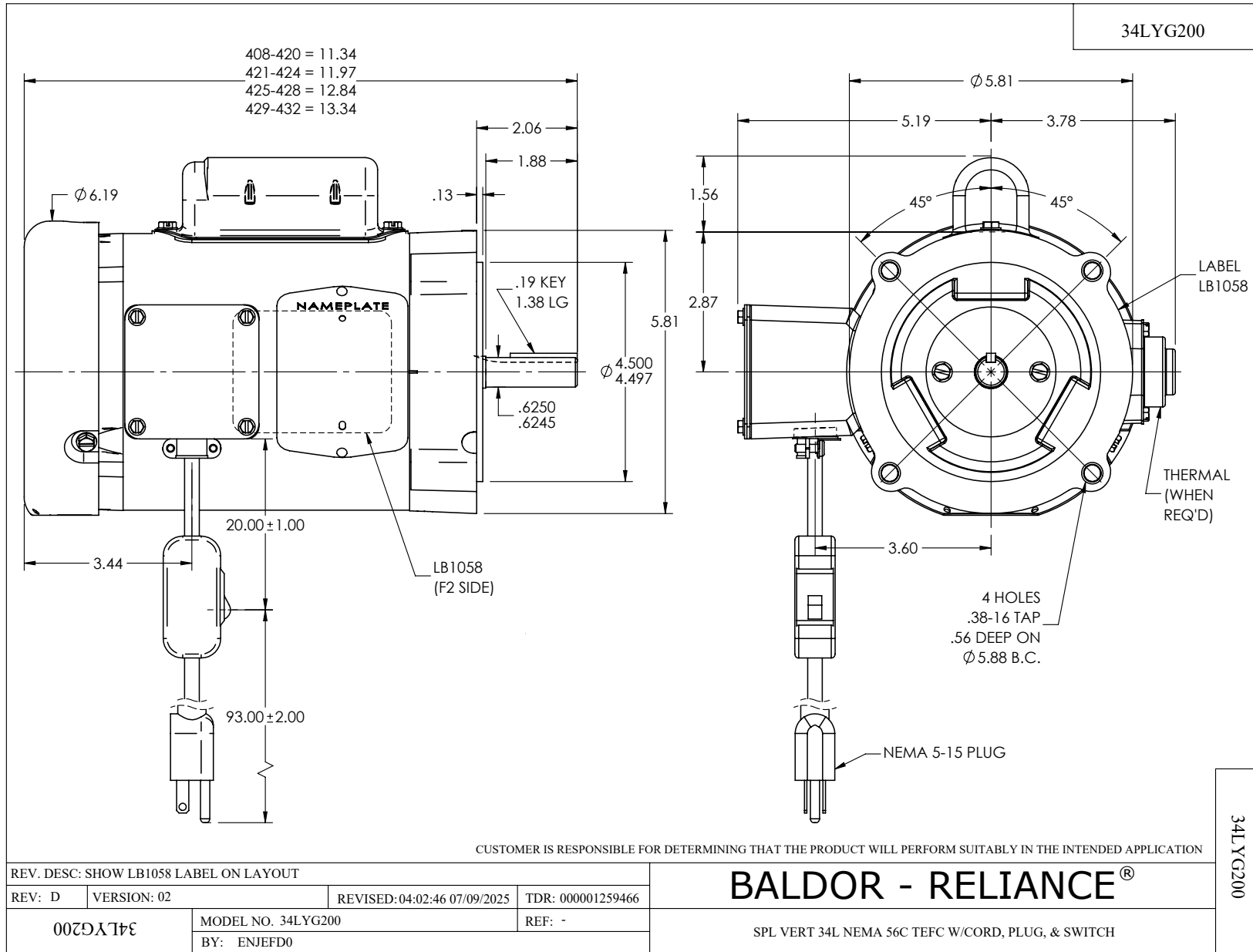
0.5 HP 1 PH 60 HZ 3450 RPM 115 V 3416L

Typical performance - not guaranteed values.

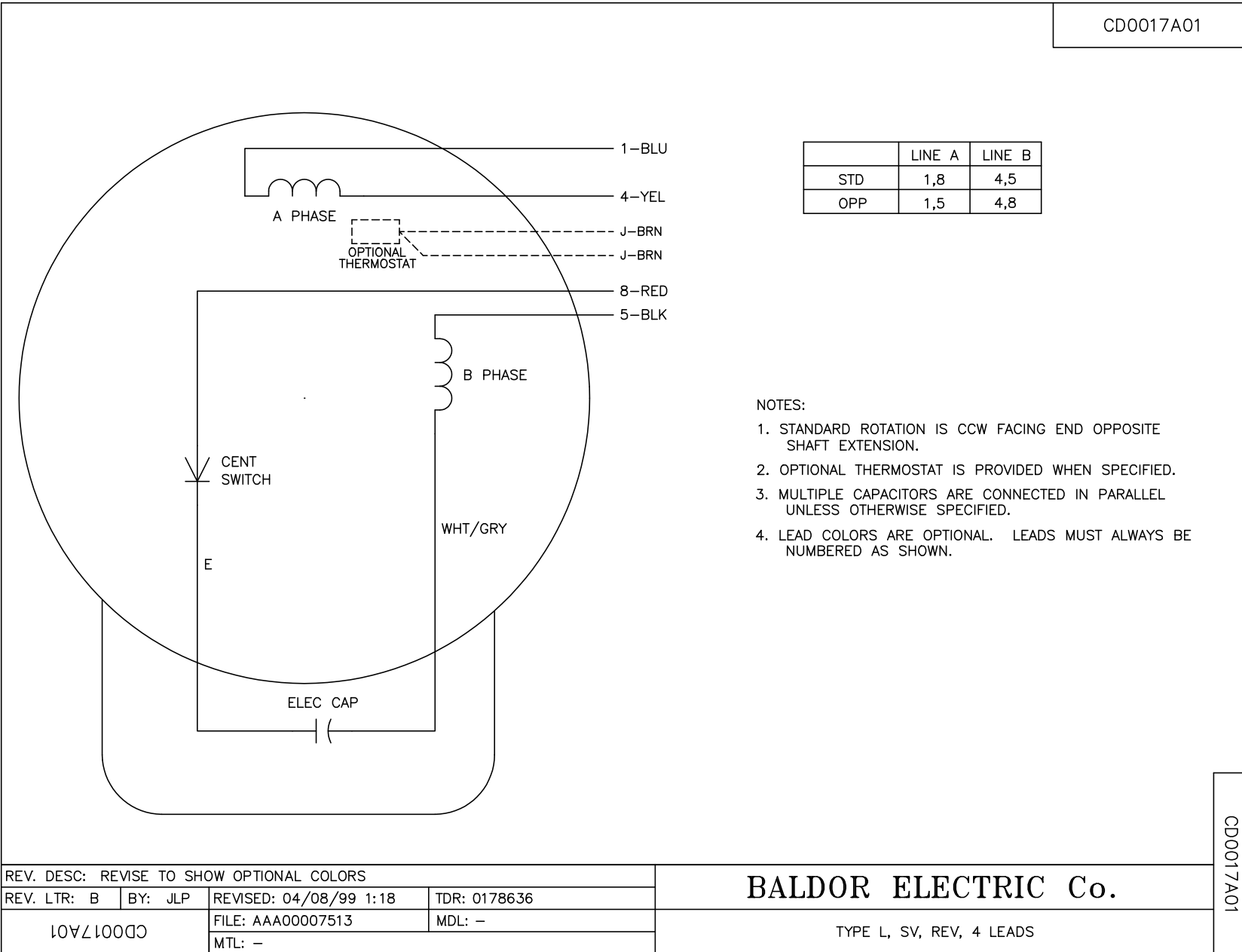
TORQUES (LB-FT): PO=2 PU=1.6 LR=3 LRA=39



7/8/2026 ACPERF, record # 93588



CD0017A01



	LINE A	LINE B
STD	1,8	4,5
OPP	1,5	4,8

- NOTES:
1. STANDARD ROTATION IS CCW FACING END OPPOSITE SHAFT EXTENSION.
 2. OPTIONAL THERMOSTAT IS PROVIDED WHEN SPECIFIED.
 3. MULTIPLE CAPACITORS ARE CONNECTED IN PARALLEL UNLESS OTHERWISE SPECIFIED.
 4. LEAD COLORS ARE OPTIONAL. LEADS MUST ALWAYS BE NUMBERED AS SHOWN.

CD0017A01

REV. DESC: REVISE TO SHOW OPTIONAL COLORS			
REV. LTR: B	BY: JLP	REVISED: 04/08/99 1:18	TDR: 0178636
10V1000		FILE: AAA00007513	MDL: -
		MTL: -	

BALDOR ELECTRIC Co.

TYPE L, SV, REV, 4 LEADS