

BALDOR • RELIANCE

Customer information packet

VJPFPM2542T-5

50HP, 3525RPM, 3PH, 60HZ, 324JP, 4044M, OPSB, F

Specifications

Enclosure	OPSB
Frame	324JP
Frame Material	Steel
Frequency	60.00 Hz
Motor Letter Type	Three Phase
Output @ Frequency	50.000 HP @ 60 HZ
Phase	3
Synchronous Speed @ Frequency	3600 RPM @ 60 HZ
Voltage @ Frequency	575.0 V @ 60 HZ
Agency Approvals	CSA EEV UL
Ambient Temperature	40 °C
Auxillary Box	No Auxillary Box
Auxillary Box Lead Termination	None
Base Indicator	No Mounting
Bearing Grease Type	Polyrex EM (-20F +300F)
Blower	None
Current @ Voltage	46.000 A @ 575.0 V
Design Code	B
Drip Cover	Drip Cover
Duty Rating	CONT
Efficiency @ 100% Load	92.4 %
Electrically Isolated Bearing	Not Electrically Isolated
Feedback Device	NO FEEDBACK
Heater Indicator	No Heater
High Voltage Full Load Amps	46.0 a
Insulation Class	F
Inverter Code	Not Inverter
KVA Code	F
Lifting Lugs	Vertical Lifting Lugs
Locked Bearing Indicator	Locked Bearing
Motor Lead Termination	Flying Leads

Part detail

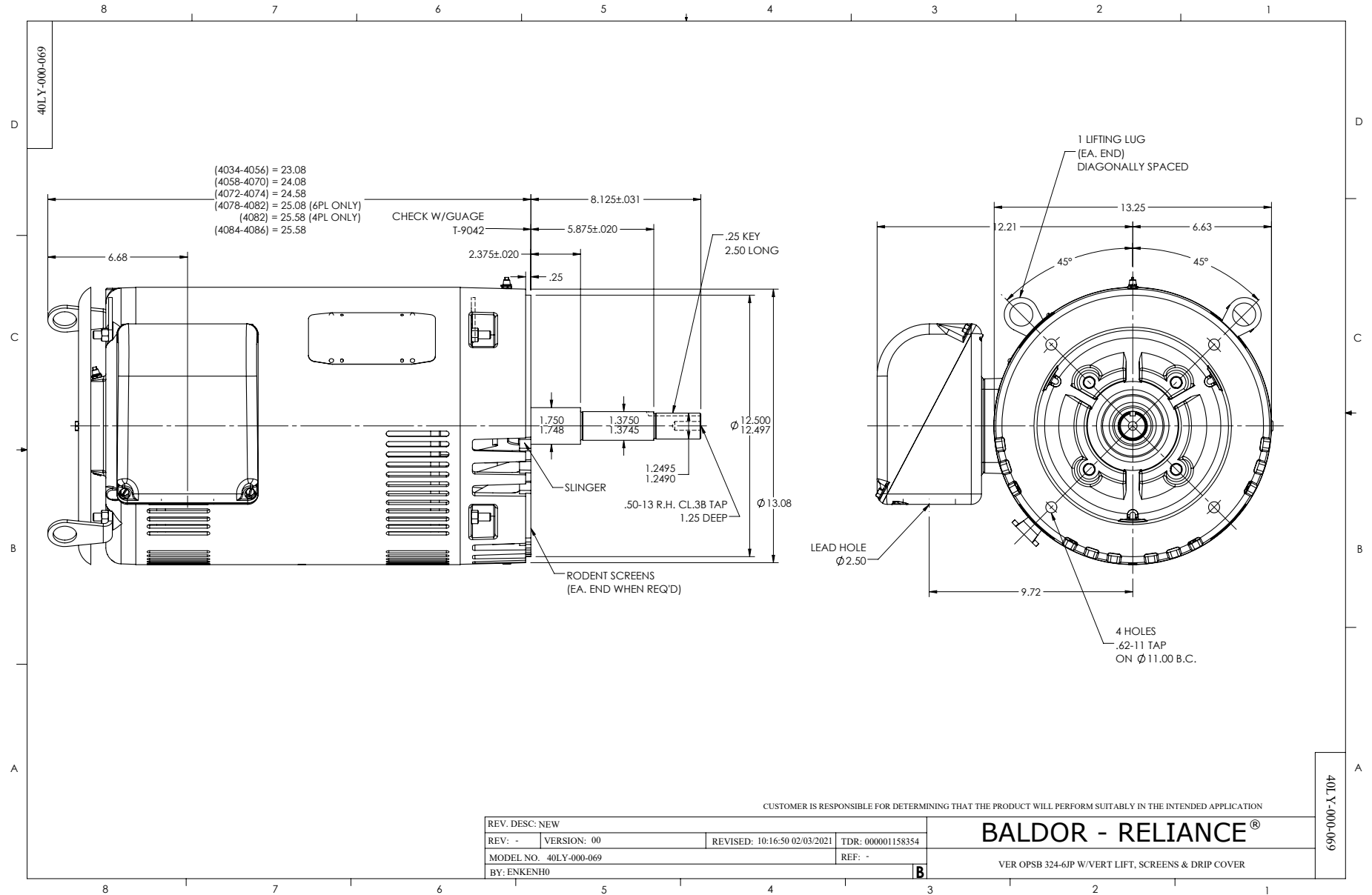
Revision	A
Type	AC
Mech. spec.	
Base	
Status	PRD/A
Elec. spec.	40WGX356
Layout	40LY-000-069
Eff. date	08-01-2023
CD Diagram	CD0382
Poles	02
Leads	6#8
Proprietary	False
Created date	02-09-2021

Motor Standards	NEMA
Motor Type	4044M
Mounting Arrangement	F1
Number of Poles	2
Overall Length	31.21 IN
Power Factor	87
Product Family	General Purpose
Pulley Face Code	C-Face
Rodent Screen	Included
Service Factor	1.15
Shaft Diameter	1.250 IN
Shaft Ground Indicator	No Shaft Grounding
Shaft Rotation	Reversible
Speed	3525 rpm
Speed Code	Single Speed
Starting Method	Wye Start - Delta Run
Thermal Device - Bearing	None
Thermal Device - Winding	None
Vibration Sensor Indicator	No Vibration Sensor
Winding Thermal 1	None
Winding Thermal 2	None

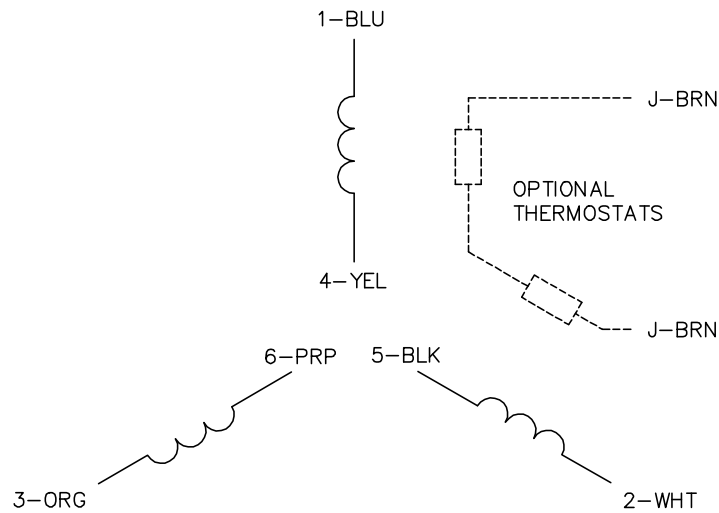
Nameplate

NP3454L

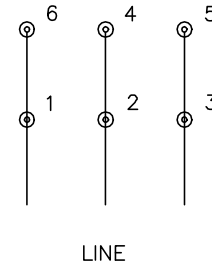
CAT.NO.	VJPFPM2542T-5	CUST P/N		I.P.	23
SPEC.	40-0000-0207	SER.NO.		FRAME	324JP
HZ	60	HP	50	RPM	3525
VOLTS	575	CODE	F	VOLTS	
AMPS	46	DES	B	AMPS	
EFF	92.4	SER.F.	1.15	PF	87
RATING	40C AMB-CONT	DE BRG	6312	GREASE	POLYREX EM
BLANK		ODE BRG	6309	MTR. WT.	396
		CLASS	F	PH	3
		ENCL	OPSB	CC	010A
HTR-VOLTS		HTR-AMPS		HTR-WATTS	



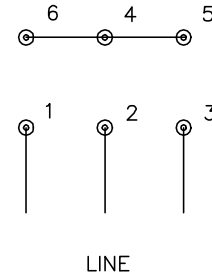
CD0382



RUN CONNECTION (1D)



START CONNECTION (1Y)



NOTES:

1. INTERCHANGE ANY TWO LINE LEADS TO REVERSE ROTATION.
2. OPTIONAL THERMOSTATS ARE PROVIDED WHEN SPECIFIED.
3. ACTUAL NUMBER OF INTERNAL PARALLEL CIRCUITS MAY BE A MULTIPLE OF THOSE SHOWN ABOVE.
4. LEAD COLORS ARE OPTIONAL. LEADS MUST ALWAYS BE NUMBERED AS SHOWN.
5. FOR ACROSS-THE-LINE STARTING, USE 'RUN' CONNECTION.

CD0382

REV. DESC: ADD CLASS CONN00000007		
REV. LTR: F	VERSION: 01	TDR: 000001099922
FILE: \AAA\00005\243	REVISED: 09:05:32 02/19/2019	BY: ENBRIRO
MTL: -	© □	

BALDOR - RELIANCE®

3PH, SV, 6 LEADS, Y START/D RUN

SH 1 of 1