

BALDOR • RELIANCE

Customer information packet

VJPFPM2535T-5

30HP, 1770RPM, 3PH, 60HZ, 286JP, 4052M, OPSB, F

Specifications

Enclosure	OPSB
Frame	286JP
Frame Material	Steel
Frequency	60.00 Hz
Motor Letter Type	Three Phase
Output @ Frequency	30.000 HP @ 60 HZ
Phase	3
Synchronous Speed @ Frequency	1800 RPM @ 60 HZ
Voltage @ Frequency	575.0 V @ 60 HZ
Agency Approvals	CSA EEV UL
Ambient Temperature	40 °C
Auxillary Box	No Auxillary Box
Auxillary Box Lead Termination	None
Base Indicator	No Mounting
Bearing Grease Type	Polyrex EM (-20F +300F)
Blower	None
Current @ Voltage	29.000 A @ 575.0 V
Design Code	B
Drip Cover	Drip Cover
Duty Rating	CONT
Efficiency @ 100% Load	92.4 %
Electrically Isolated Bearing	Not Electrically Isolated
Feedback Device	NO FEEDBACK
Front Face Code	Drip Cover Mounting
Front Shaft Indicator	None
Heater Indicator	No Heater
High Voltage Full Load Amps	29.0 a
Insulation Class	F
Inverter Code	Not Inverter
KVA Code	F
Lifting Lugs	Standard Lifting Lugs

Part detail

Revision	J
Type	AC
Mech. spec.	40E282
Base	
Status	PRD/A
Elec. spec.	40WGX354
Layout	40LYE282
Eff. date	08-01-2023
CD Diagram	CD0382
Poles	04
Leads	6#10
Proprietary	False
Created date	07-22-2016

Locked Bearing Indicator	Locked Bearing
Motor Lead Exit	Ko Box
Motor Lead Quantity/Wire Size	6 @ 10 AWG
Motor Lead Termination	Flying Leads
Motor Standards	NEMA
Motor Type	4052M
Mounting Arrangement	F1
Number of Poles	4
Overall Length	29.25 IN
Power Factor	84
Product Family	Fire Pump Motor
Pulley End Bearing Type	Ball
Pulley Face Code	C-Face
Pulley Shaft Indicator	Tapped & Key
Rodent Screen	Included
Service Factor	1.15
Shaft Diameter	1.250 IN
Shaft Extension Location	Pulley End
Shaft Ground Indicator	No Shaft Grounding
Shaft Rotation	Reversible
Shaft Slinger Indicator	Shaft Slinger
Speed	1770 rpm
Speed Code	Single Speed
Starting Method	Wye Start - Delta Run
Thermal Device - Bearing	None
Thermal Device - Winding	None
Vibration Sensor Indicator	No Vibration Sensor
Winding Thermal 1	None
Winding Thermal 2	None

Nameplate

NP3454L

CAT.NO.	VJPFPM2535T-5	CUST P/N		I.P.	23
SPEC.	40E282X354H2	SER.NO.		FRAME	286JP
HZ	60	HP	30	RPM	1770
VOLTS	575	CODE	F	VOLTS	
AMPS	29	DES	B	AMPS	
EFF	92.4	SER.F.	1.15	PF	84
RATING	40C AMB-CONT	DE BRG	6312	GREASE	POLYREX EM
BLANK		ODE BRG	6309	MTR. WT.	396
		CLASS	F	PH	3
		ENCL	OPSB	CC	010A
HTR-VOLTS		HTR-AMPS		HTR-WATTS	

AC Induction Motor Performance Data

Record # 58301

Typical performance - not guaranteed values

Winding: 40WGX354-R001		Type: 4052M		Enclosure: OPEN	
Nameplate Data			575 V, 60 Hz: Single Voltage Motor		
Rated Output (HP)	30	Full Load Torque	89.5 LB-FT		
Volts	575	Start Configuration	direct on line		
Full Load Amps	29	Breakdown Torque	256 LB-FT		
R.P.M.	1770	Pull-up Torque	112 LB-FT		
Hz	60	Locked-rotor Torque	142 LB-FT		
NEMA Design Code	B	Starting Current	168 A		
Service Factor (S.F.)	1.15	No-load Current	10.3 A		
NEMA Nom. Eff.	92.4	Line-line Res. @ 25°C	0.412 Ω		
Rating - Duty	40C	Temp. Rise @ Rated Load	32°C		
S.F. Amps	AMB-CONT	Temp. Rise @ S.F. Load	40°C		
		Locked-rotor Power Factor	31.5		
		Rotor inertia	4.14 LB-FT ²		

Load Characteristics 575 V, 60 Hz, 30 HP

% of Rated Load	25	50	75	100	125	150	S.F.
Power Factor	52	72	80	84	85	85	85
Efficiency	90.5	93.3	93.9	93.5	92.9	91.9	93.2
Speed	1793	1787	1780	1773	1765	1756	1768
Line amperes	12.4	16.6	22.3	28.7	35.6	43.1	32.8

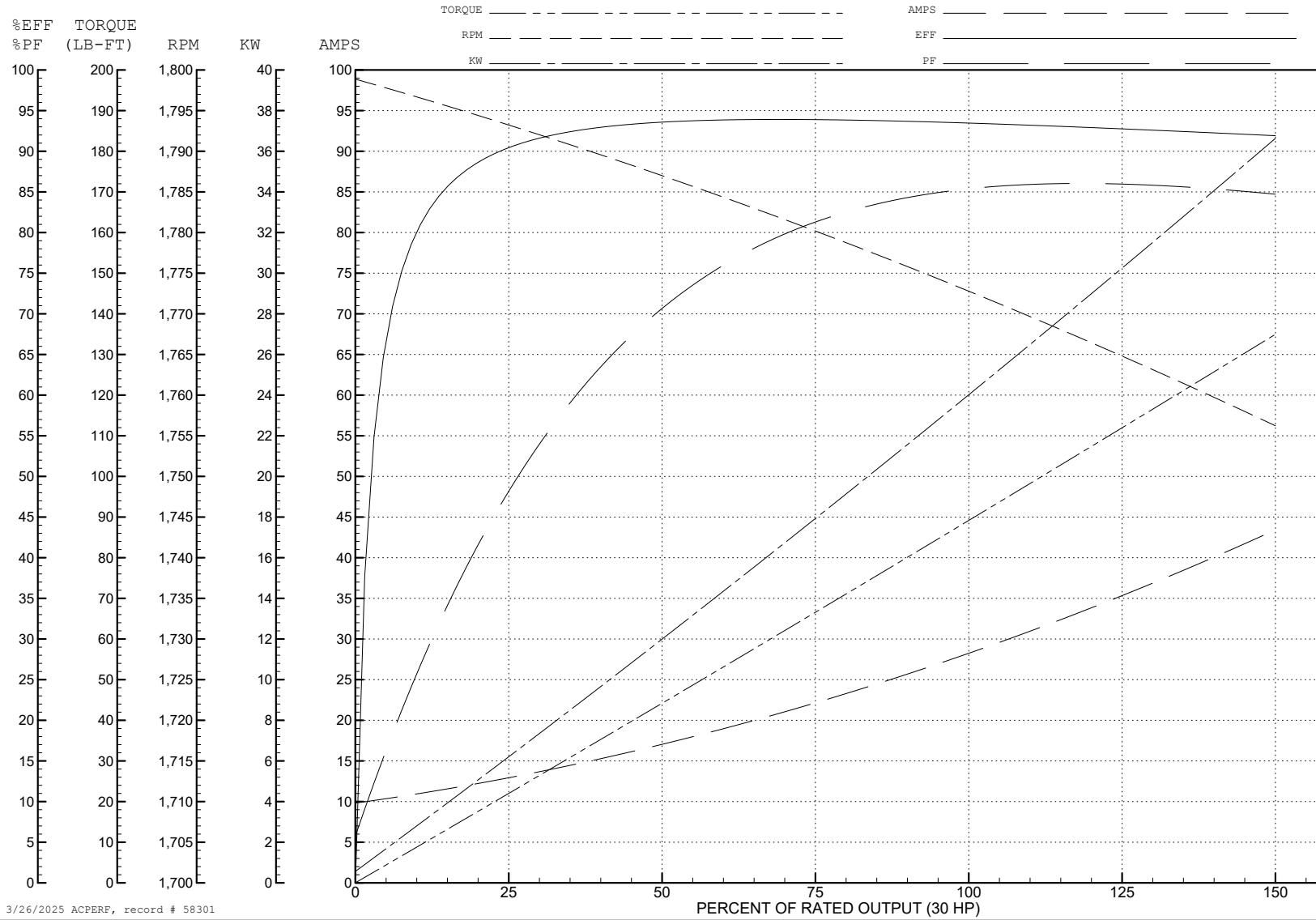
ABB Motors and Mechanical Inc.

WINDING # 40WGX354

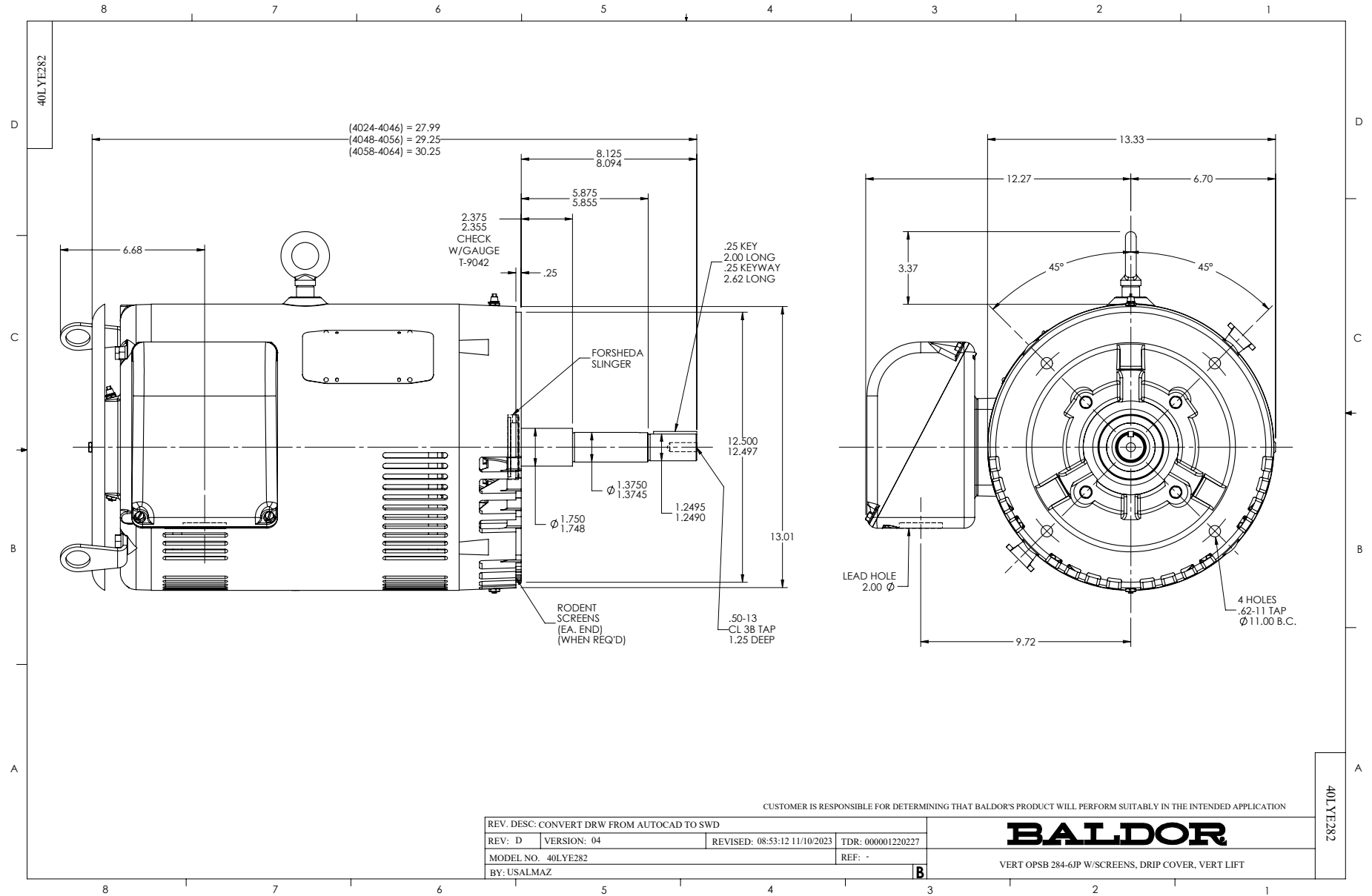
Typical performance - not guaranteed values.

30 HP 3 PH 60 HZ 1770 RPM 575 V 4052M

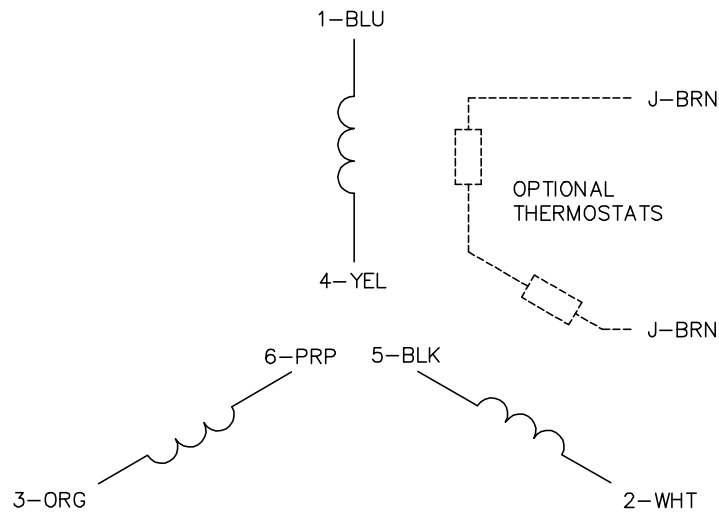
TORQUES (LB-FT): PO=256 PU=112 LR=142 LRA=168



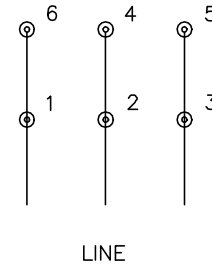
3/26/2025 ACPERF, record # 58301



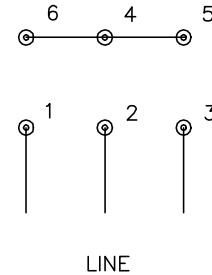
CD0382



RUN CONNECTION
(1D)



START CONNECTION
(1Y)



NOTES:

1. INTERCHANGE ANY TWO LINE LEADS TO REVERSE ROTATION.
2. OPTIONAL THERMOSTATS ARE PROVIDED WHEN SPECIFIED.
3. ACTUAL NUMBER OF INTERNAL PARALLEL CIRCUITS MAY BE A MULTIPLE OF THOSE SHOWN ABOVE.
4. LEAD COLORS ARE OPTIONAL. LEADS MUST ALWAYS BE NUMBERED AS SHOWN.
5. FOR ACROSS-THE-LINE STARTING, USE 'RUN' CONNECTION.

CD0382

REV. DESC: ADD CLASS CONN00000007		
REV. LTR: F	VERSION: 01	TDR: 000001099922
FILE: \AAA\00005\243	REVISED: 09:05:32 02/19/2019	BY: ENBRIRO
MTL: -	© □	

BALDOR - RELIANCE®

3PH, SV, 6 LEADS, Y START/D RUN

SH 1 of 1