

BALDOR • RELIANCE

Customer information packet

VJPFPM2534T

30//25HP, 3510//2910RPM, 3PH, 60//50HZ, 284J

Class -

Division - Not Applicable

Specifications

Enclosure	OPSB
Frame	284JP
Frame Material	Steel
Frequency	50.00 Hz 60.00 Hz
Haz Area Division	Not Applicable
Motor Letter Type	Three Phase
Output @ Frequency	25.000 HP @ 50 HZ 30.000 HP @ 60 HZ
Phase	3
Synchronous Speed @ Frequency	3000 RPM @ 50 HZ
Voltage @ Frequency	230.0 V @ 60 HZ 190.0 V @ 50 HZ 380.0 V @ 50 HZ 460.0 V @ 60 HZ
Agency Approvals	CSA EEV UL
Ambient Temperature	40 °C
Auxillary Box	No Auxillary Box
Auxillary Box Lead Termination	None
Base Indicator	No Mounting
Bearing Grease Type	Polyrex EM (-20F +300F)
Blower	None
Current @ Voltage	76.000 A @ 208.0 V 70.000 A @ 230.0 V 70.000 A @ 190.0 V 35.000 A @ 460.0 V 35.000 A @ 380.0 V
Design Code	B
Drip Cover	Drip Cover
Duty Rating	CONT
Efficiency @ 100% Load	91.0 %

Part detail

Revision	U
Type	AC
Mech. spec.	39T043
Base	
Status	PRD/A
Elec. spec.	39WGX216
Layout	39LYT043
Eff. date	06-26-2024
CD Diagram	CD0104
Poles	02
Leads	12#12
Proprietary	False
Created date	09-17-2015

Electrically Isolated Bearing	Not Electrically Isolated
Feedback Device	NO FEEDBACK
Front Face Code	Drip Cover Mounting
Front Shaft Indicator	None
Heater Indicator	No Heater
High Voltage Full Load Amps	35.0 a
Insulation Class	F
Inverter Code	Not Inverter
KVA Code	G
Lifting Lugs	Vertical Lifting Lugs
Locked Bearing Indicator	Locked Bearing
Motor Lead Exit	Ko Box
Motor Lead Quantity/Wire Size	12 @ 12 AWG
Motor Lead Termination	Flying Leads
Motor Standards	NEMA
Motor Type	3936M
Mounting Arrangement	F1
Number of Poles	2
Overall Length	29.23 IN
Power Factor	89
Product Family	Fire Pump Motor
Pulley End Bearing Type	Ball
Pulley Face Code	C-Face
Pulley Shaft Indicator	Tapped & Key
Rodent Screen	Included
Service Factor	1.15
Shaft Diameter	1.750 IN
Shaft Extension Location	Pulley End
Shaft Ground Indicator	No Shaft Grounding
Shaft Rotation	Reversible
Shaft Slinger Indicator	Shaft Slinger
Speed	2910 rpm 3510 rpm
Speed Code	Single Speed

Starting Method	Wye Start - Delta Run
Thermal Device - Bearing	None
Thermal Device - Winding	None
Vibration Sensor Indicator	No Vibration Sensor

Nameplate

NP3454L

CAT.NO.	VJPFPM2534T	CUST P/N		I.P.	23
SPEC.	39T043X216H2	SER.NO.		FRAME	284JP
HZ	60	HP	30	RPM	3510
				HZ	50
				HP	25
				RPM	2910
VOLTS	230/460	CODE	G	VOLTS	190/380
		CODE	F		
AMPS	70/35	DES	B	AMPS	70/35
		DES	B		
EFF	91	SER.F.	1.15	PF	89
				EFF	90.2
				SER.F.	1.15
				PF	89
RATING	40C AMB-CONT	DE BRG	6312	GREASE	POLYREX EM
BLANK		ODE BRG	6208	MTR. WT.	278
		CLASS	F	PH	3
		ENCL	OPSB	CC	010A
HTR-VOLTS		HTR-AMPS		HTR-WATTS	

AC Induction Motor Performance Data

Record # 52859

Typical performance - not guaranteed values

Winding: 39WGX216-R004		Type: 3936M	Enclosure: OPSB	
Nameplate Data			460 V, 60 Hz: High Voltage Connection	
Rated Output (HP)	30//25	Full Load Torque	44.9 LB-FT	
Volts	230/460//190/380	Start Configuration	direct on line	
Full Load Amps	70/35	Breakdown Torque	156 LB-FT	
R.P.M.	3510//2910	Pull-up Torque	47.6 LB-FT	
Hz	60//50 Phase	Locked-rotor Torque	67.2 LB-FT	
NEMA Design Code	B KVA Code	Starting Current	214 A	
Service Factor (S.F.)	1.15	No-load Current	10.3 A	
NEMA Nom. Eff.	91 Power Factor	Line-line Res. @ 25°C	0.393 Ω	
Rating - Duty	40C AMB-CONT	Temp. Rise @ Rated Load	37°C	
S.F. Amps		Temp. Rise @ S.F. Load	51°C	
		Locked-rotor Power Factor	30	
		Rotor inertia	0.92 LB-FT ²	

Load Characteristics 460 V, 60 Hz, 30 HP

% of Rated Load	25	50	75	100	125	150	S.F.
Power Factor	60	80	87	89	90	90	90
Efficiency	89.4	92.2	92.3	91.4	90.2	88.5	90.7
Speed	3578	3556	3533	3508	3481	3450	3492
Line amperes	13.03	19	26.36	34.4	43.2	53.1	39.7

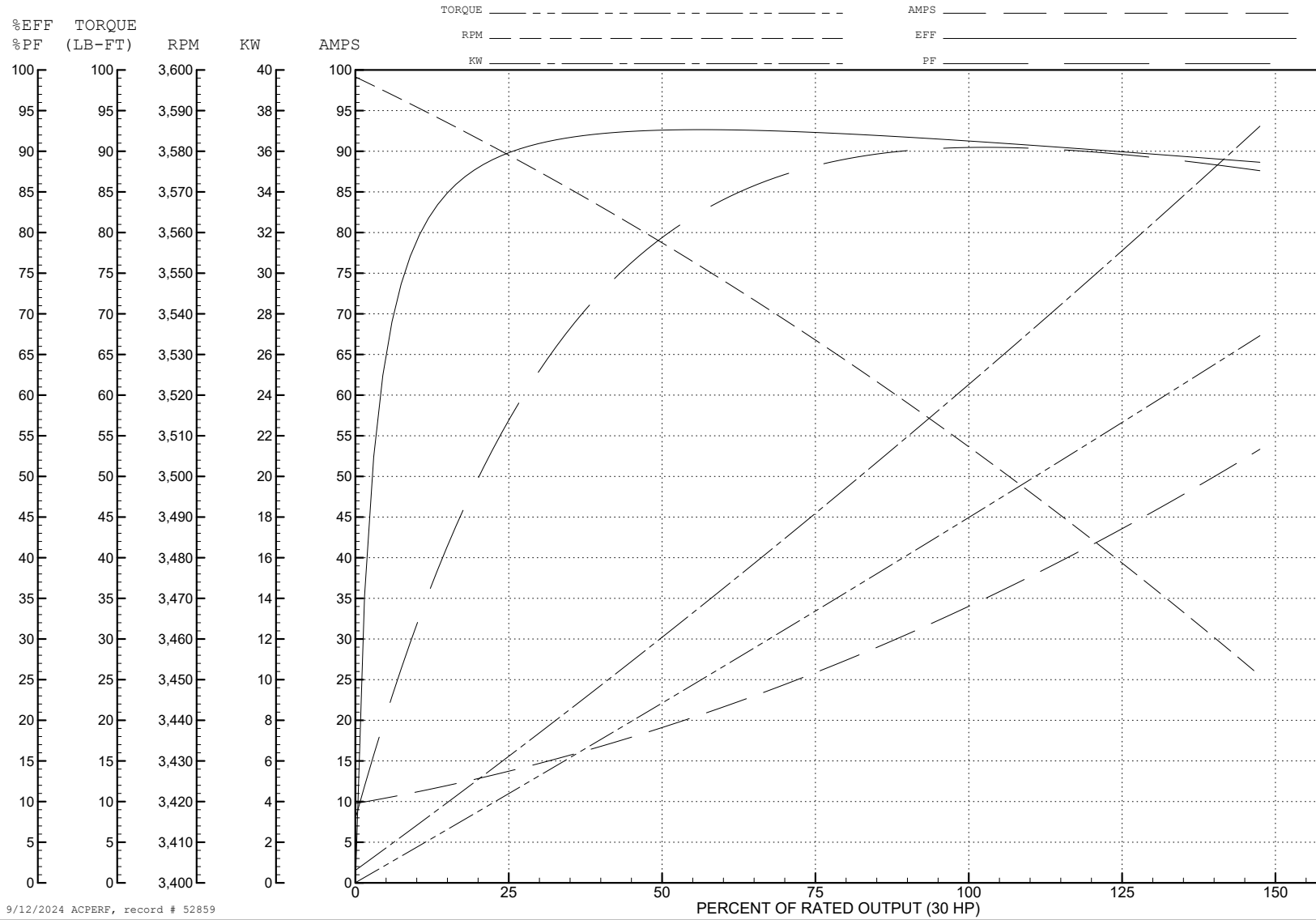
ABB Motors and Mechanical Inc.

WINDING # 39WGX216

30 HP 3 PH 60 HZ 3508 RPM 460 V 3936M

Typical performance - not guaranteed values.

TORQUES (LB-FT): PO=156 PU=47.6 LR=67.2 LRA=214



9/12/2024 ACPERF, record # 52859

AC Induction Motor Performance Data

Record # 52860

Typical performance - not guaranteed values

Winding: 39WGX216-R004		Type: 3936M	Enclosure: OPSB	
Nameplate Data			380 V, 50 Hz: High Voltage Connection	
Rated Output (HP)	30//25	Full Load Torque	45.2 LB-FT	
Volts	230/460//190/380	Start Configuration	direct on line	
Full Load Amps	70/35	Breakdown Torque	149 LB-FT	
R.P.M.	3510//2910	Pull-up Torque	50.3 LB-FT	
Hz	60//50 Phase	Locked-rotor Torque	71 LB-FT	
NEMA Design Code	B KVA Code	Starting Current	208 A	
Service Factor (S.F.)	1.15	No-load Current	10.1 A	
NEMA Nom. Eff.	91 Power Factor	Line-line Res. @ 25°C	0.379 Ω	
Rating - Duty	40C AMB-CONT	Temp. Rise @ Rated Load	38°C	
S.F. Amps		Temp. Rise @ S.F. Load	48°C	
		Locked-rotor Power Factor	34.2	
		Rotor inertia	0.92 LB-FT ²	

Load Characteristics 380 V, 50 Hz, 25 HP

% of Rated Load	25	50	75	100	125	150	S.F.
Power Factor	62	82	88	90	90	88	90
Efficiency	91.2	92.9	92.4	90.9	89.3	87.1	90
Speed	2979	2957	2934	2909	2882	2850	2893
Line amperes	12.8	19	26.5	34.8	43.9	54.4	40.3

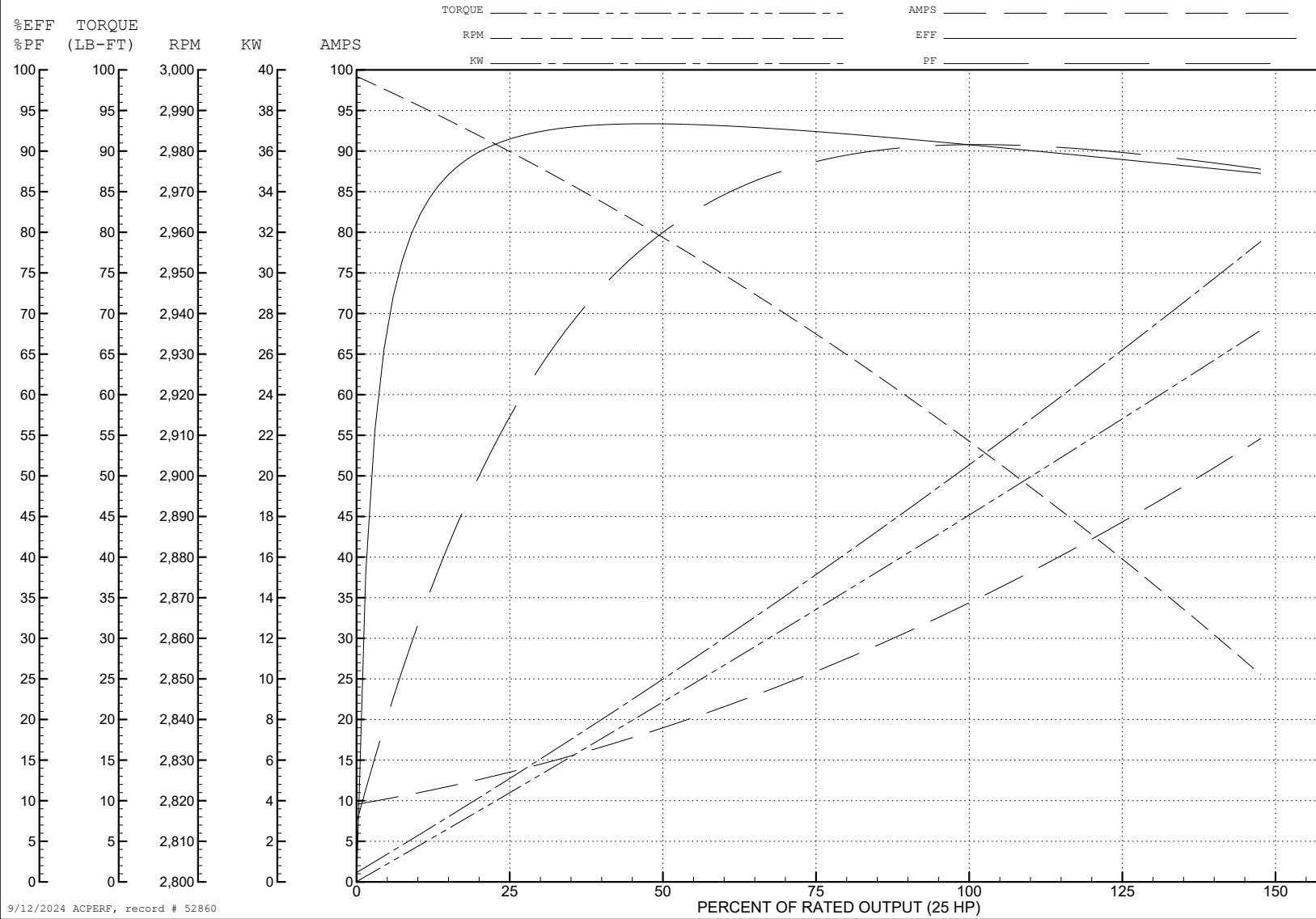
ABB Motors and Mechanical Inc.

WINDING # 39WGX216

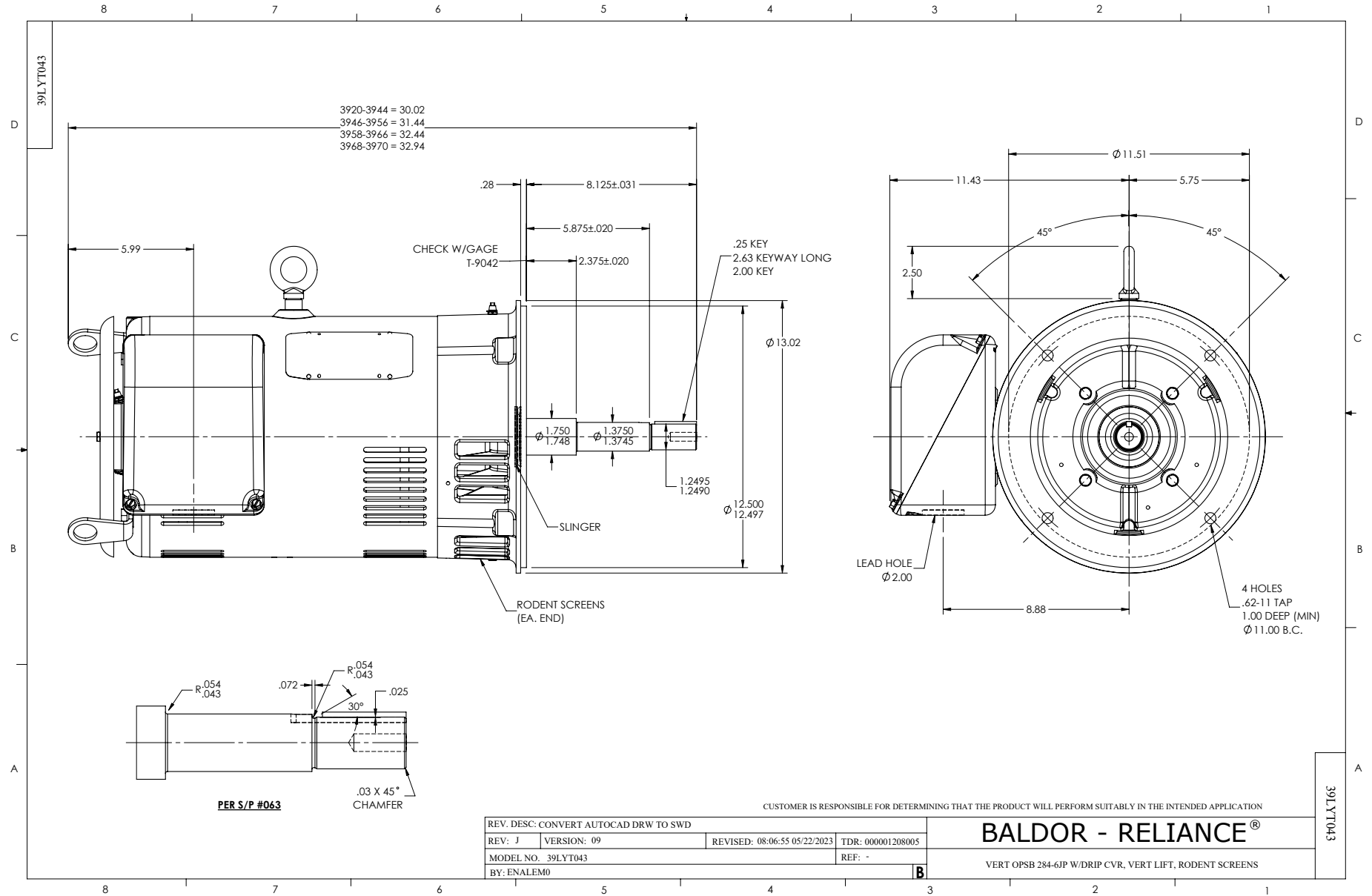
Typical performance - not guaranteed values.

25 HP 3 PH 50 HZ 2909 RPM 380 V 3936M

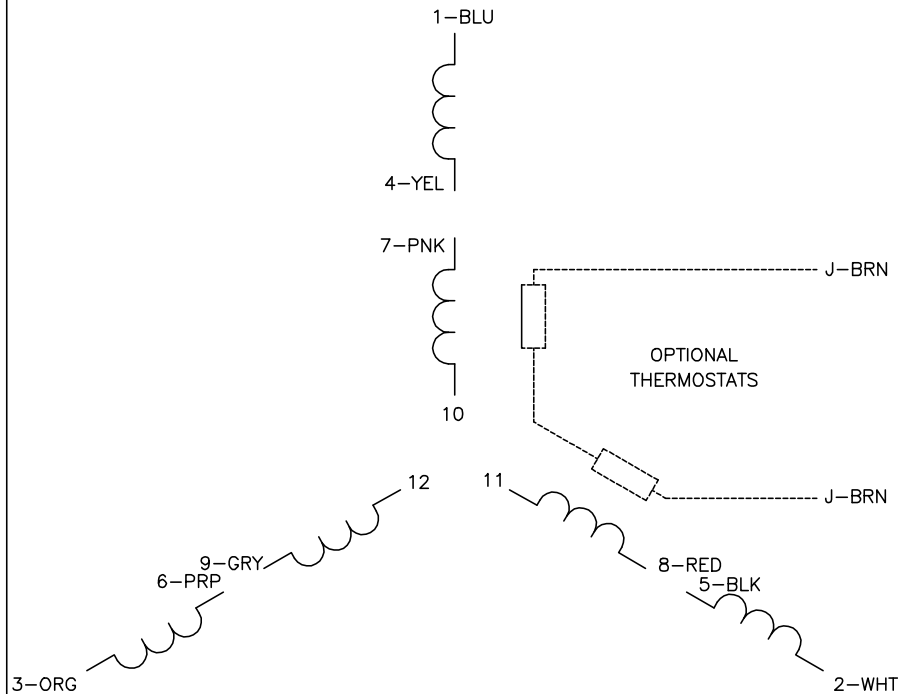
TORQUES (LB-FT): PO=149 PU=50.3 LR=71 LRA=208



9/12/2024 ACPERF, record # 52860

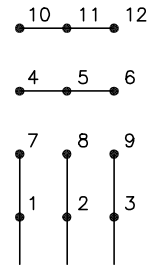


CD0104



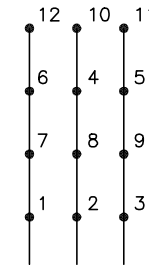
LOW VOLTAGE

START (2Y)



LINE

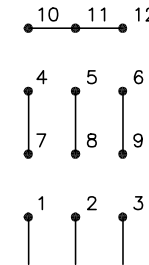
RUN (2D)



LINE

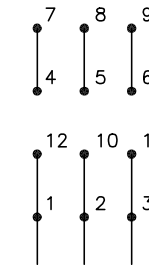
HIGH VOLTAGE

START (1Y)



LINE

RUN (1D)



LINE

NOTES:

1. INTERCHANGE ANY TWO LINE LEADS TO REVERSE ROTATION.
2. OPTIONAL THERMOSTATS ARE PROVIDED WHEN SPECIFIED.
3. ACTUAL NUMBER OF INTERNAL PARALLEL CIRCUITS MAY BE A MULTIPLE OF THOSE SHOWN ABOVE.
4. LEAD COLORS ARE OPTIONAL. LEADS MUST ALWAYS BE NUMBERED AS SHOWN.

CD0104

REV. DESC: ADD CLASS CONN00000007		
REV. LTR: D	VERSION: 01	TDR: 000001099922
FILE: \AAA\00008\377	REVISED: 09:02:55 02/19/2019	BY: ENBRIRO
MTL: -	© □	

BALDOR - RELIANCE®

3PH, DV, 12 LEADS, Y START/D RUN

SH 1 of 1