

BALDOR • RELIANCE

Customer information packet

VJPFPM2534T-5

30HP, 3505RPM, 3PH, 60HZ, 284JP, 3936M, OPSB, F

Class - None

Division - Not Applicable

Specifications

Enclosure	OPSB
Frame	284JP
Frame Material	Steel
Frequency	60.00 Hz
Haz Area Class and Group	None
Haz Area Division	Not Applicable
Motor Letter Type	Three Phase
Output @ Frequency	30.000 HP @ 60 HZ
Phase	3
Synchronous Speed @ Frequency	3600 RPM @ 60 HZ
Voltage @ Frequency	575.0 V @ 60 HZ
Agency Approvals	UL CSA EEV
Ambient Temperature	40 °C
Auxillary Box	No Auxillary Box
Auxillary Box Lead Termination	None
Base Indicator	No Mounting
Bearing Grease Type	Polyrex EM (-20F +300F)
Blower	None
Current @ Voltage	28.000 A @ 575.0 V
Design Code	B
Drip Cover	Drip Cover
Duty Rating	CONT
Efficiency @ 100% Load	91.0 %
Electrically Isolated Bearing	Not Electrically Isolated
Feedback Device	NO FEEDBACK
Front Face Code	Drip Cover Mounting
Front Shaft Indicator	None
Heater Indicator	No Heater
High Voltage Full Load Amps	28.0 a
Insulation Class	F
Inverter Code	Not Inverter

Part detail

Revision	R
Type	AC
Mech. spec.	39T043
Base	
Status	PRD/A
Elec. spec.	39WGX990
Layout	39LYT043
Eff. date	06-26-2024
CD Diagram	CD0382
Poles	02
Leads	6#12
Proprietary	False
Created date	07-21-2016

KVA Code	G
Lifting Lugs	Vertical Lifting Lugs
Locked Bearing Indicator	Locked Bearing
Motor Lead Exit	Ko Box
Motor Lead Quantity/Wire Size	6 @ 12 AWG
Motor Lead Termination	Flying Leads
Motor Standards	NEMA
Motor Type	3936M
Mounting Arrangement	F1
Number of Poles	2
Overall Length	29.23 IN
Power Factor	89
Product Family	Fire Pump Motor
Pulley End Bearing Type	Ball
Pulley Face Code	C-Face
Pulley Shaft Indicator	Tapped & Key
Rodent Screen	Included
Service Factor	1.15
Shaft Diameter	1.250 IN
Shaft Extension Location	Pulley End
Shaft Ground Indicator	No Shaft Grounding
Shaft Rotation	Reversible
Shaft Slinger Indicator	Shaft Slinger
Speed	3505 rpm
Speed Code	Single Speed
Starting Method	Wye Start - Delta Run
Thermal Device - Bearing	None
Thermal Device - Winding	None
Vibration Sensor Indicator	No Vibration Sensor
Winding Thermal 1	None
Winding Thermal 2	None

Nameplate

NP3454L

CAT.NO.	VJPFPM2534T-5	CUST P/N		I.P.	23
SPEC.	39T043X990H2	SER.NO.		FRAME	284JP
HZ	60	HP	30	RPM	3505
VOLTS	575	CODE	G	VOLTS	
AMPS	28	DES	B	AMPS	
EFF	91	SER.F.	1.15	PF	89
RATING	40C AMB-CONT	DE BRG	6312	GREASE	POLYREX EM
BLANK		ODE BRG	6208	MTR. WT.	266
		CLASS	F	PH	3
		ENCL	OPSB	CC	010A
HTR-VOLTS		HTR-AMPS		HTR-WATTS	

AC Induction Motor Performance Data

Record # 58305

Typical performance - not guaranteed values

Winding: 39WGX990-R001		Type: 3936M	Enclosure: OPSB		
Nameplate Data			575 V, 60 Hz: Single Voltage Motor		
Rated Output (HP)	30	Full Load Torque	44.9 LB-FT		
Volts	575	Start Configuration	direct on line		
Full Load Amps	28	Breakdown Torque	157 LB-FT		
R.P.M.	3505	Pull-up Torque	47.7 LB-FT		
Hz	60	Phase	3	Locked-rotor Torque	67.4 LB-FT
NEMA Design Code	B	KVA Code	G	Starting Current	171 A
Service Factor (S.F.)	1.15	No-load Current	8.18 A		
NEMA Nom. Eff.	91	Power Factor	89	Line-line Res. @ 25°C	0.548 Ω
Rating - Duty	40C AMB-CONT		Temp. Rise @ Rated Load	36°C	
S.F. Amps			Temp. Rise @ S.F. Load	44°C	
			Locked-rotor Power Factor	29.2	
			Rotor inertia	0.92 LB-FT ²	

Load Characteristics 575 V, 60 Hz, 30 HP

% of Rated Load	25	50	75	100	125	150	S.F.
Power Factor	61	82	87	89	89	88	89
Efficiency	89.4	92.3	92.6	91.6	90.5	88.9	91
Speed	3578	3556	3533	3508	3481	3450	3492
Line amperes	10.4	15.1	21	27.5	34.5	42.3	31.7

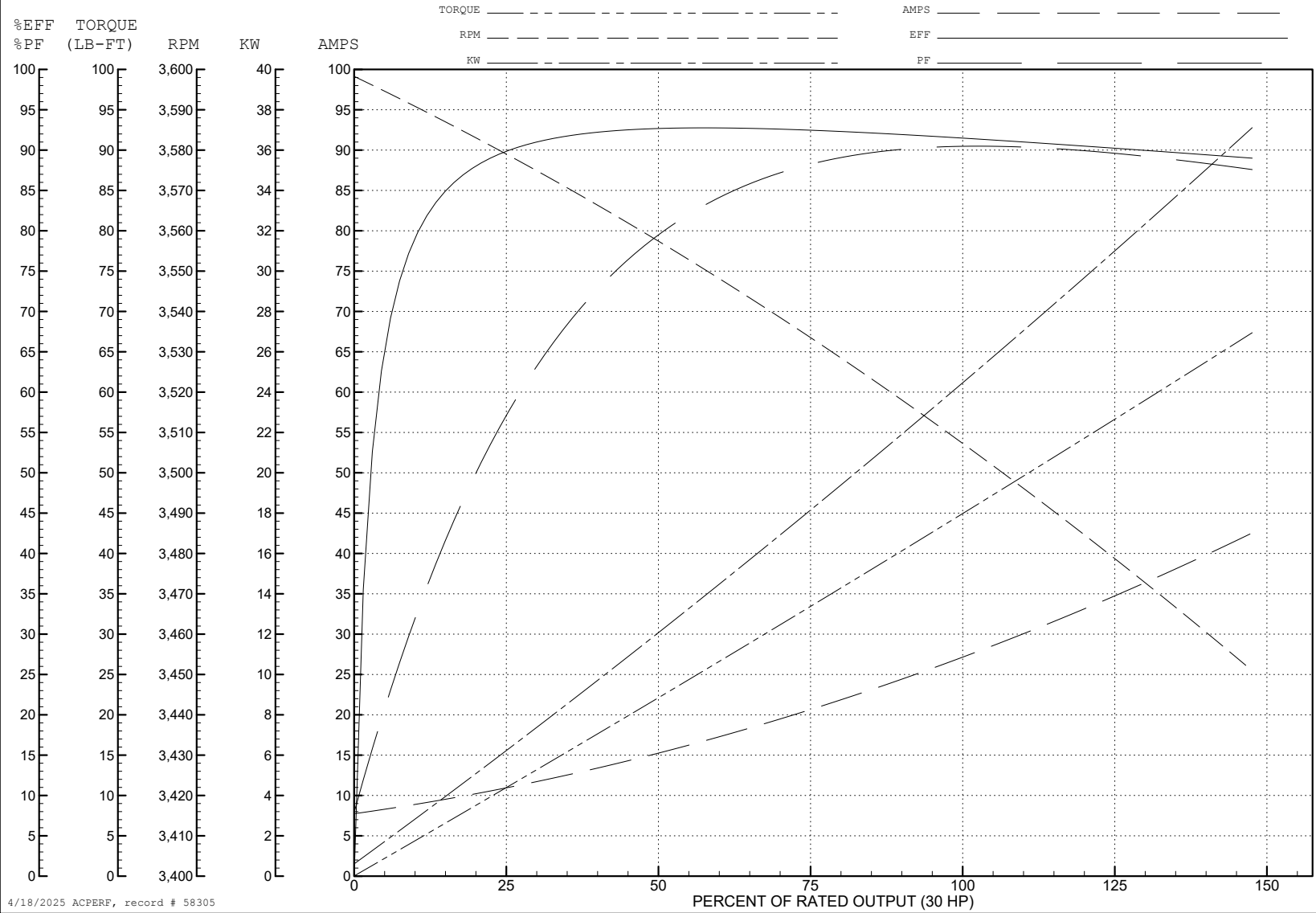
ABB Motors and Mechanical Inc.

WINDING # 39WGX990

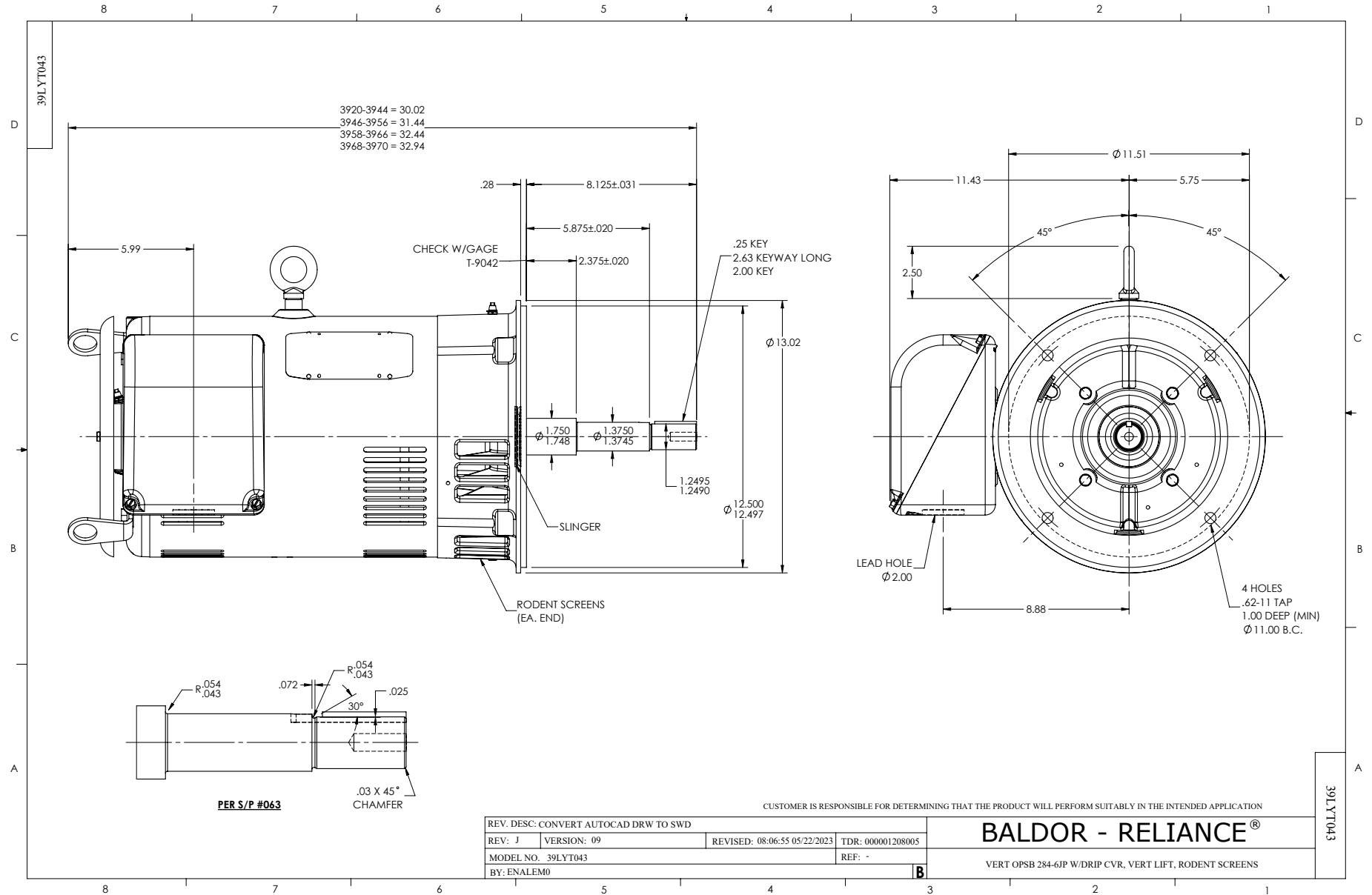
30 HP 3 PH 60 HZ 3505 RPM 575 V 3936M

Typical performance - not guaranteed values.

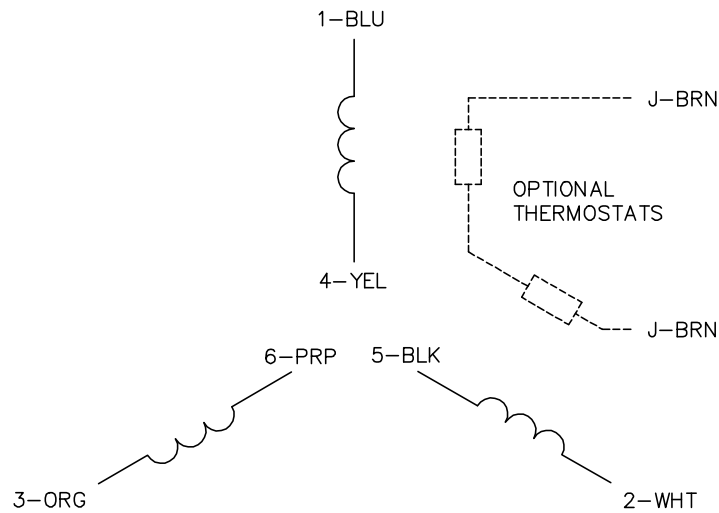
TORQUES (LB-FT): PO=157 PU=47.7 LR=67.4 LRA=171



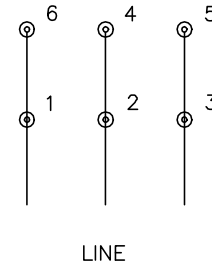
4/18/2025 ACPERF, record # 58305



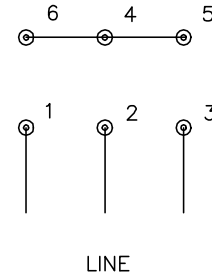
CD0382



RUN CONNECTION (1D)



START CONNECTION (1Y)



NOTES:

1. INTERCHANGE ANY TWO LINE LEADS TO REVERSE ROTATION.
2. OPTIONAL THERMOSTATS ARE PROVIDED WHEN SPECIFIED.
3. ACTUAL NUMBER OF INTERNAL PARALLEL CIRCUITS MAY BE A MULTIPLE OF THOSE SHOWN ABOVE.
4. LEAD COLORS ARE OPTIONAL. LEADS MUST ALWAYS BE NUMBERED AS SHOWN.
5. FOR ACROSS-THE-LINE STARTING, USE 'RUN' CONNECTION.

CD0382

REV. DESC: ADD CLASS CONN00000007		
REV. LTR: F	VERSION: 01	TDR: 000001099922
FILE: \AAA\00005\243	REVISED: 09:05:32 02/19/2019	BY: ENBRIRO
MTL: -	© □	

BALDOR - RELIANCE®

3PH, SV, 6 LEADS, Y START/D RUN

SH 1 of 1