

# ABB BALDOR RELIANCE III

---

## Customer information packet

VJPFPM2516T

25//20HP, 3515//2920RPM, 3PH, 60//50HZ, 256J

Class - None

Division - Not Applicable

**Specifications**

<b>Enclosure</b>	OPSB
<b>Frame</b>	256JP
<b>Frame Material</b>	Steel
<b>Frequency</b>	50.00 Hz 60.00 Hz
<b>Haz Area Class and Group</b>	None
<b>Haz Area Division</b>	Not Applicable
<b>Motor Letter Type</b>	Three Phase
<b>Output @ Frequency</b>	20.000 HP @ 50 HZ 25.000 HP @ 60 HZ
<b>Phase</b>	3
<b>Synchronous Speed @ Frequency</b>	3600 RPM @ 50 HZ
<b>Voltage @ Frequency</b>	380.0 V @ 50 HZ 230.0 V @ 60 HZ 190.0 V @ 50 HZ 460.0 V @ 60 HZ
<b>Agency Approvals</b>	UL CSA EEV
<b>Ambient Temperature</b>	40 °C
<b>Auxiliary Box</b>	NO AUXILLARY BOX
<b>Auxiliary Box Lead Termination</b>	None
<b>Base Indicator</b>	No Mounting
<b>Bearing Grease Type</b>	Polyrex EM (-20F +300F)
<b>Blower</b>	None
<b>Current @ Voltage</b>	58.000 A @ 230.0 V 56.000 A @ 190.0 V 29.000 A @ 460.0 V 28.000 A @ 380.0 V
<b>Design Code</b>	B
<b>Drip Cover</b>	Drip Cover
<b>Duty Rating</b>	CONT
<b>Efficiency @ 100% Load</b>	91.0 %

**Part Detail**

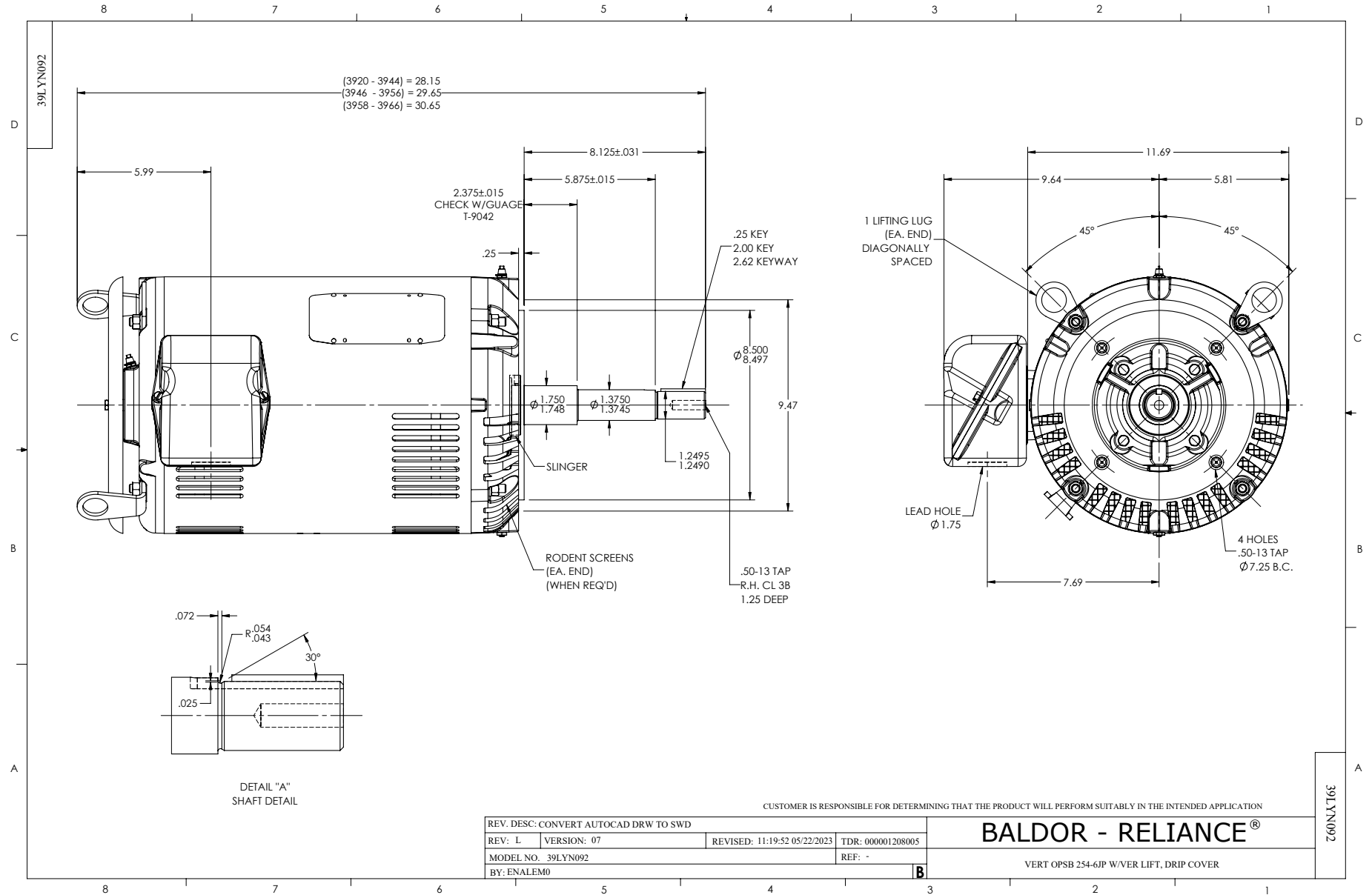
<b>Revision</b>	G
<b>Type</b>	AC
<b>Mech. spec.</b>	
<b>Base</b>	
<b>Status</b>	PRD/A
<b>Elec. spec.</b>	39WGX927
<b>Layout</b>	39LYN092
<b>Eff. date</b>	06-26-2024
<b>CD Diagram</b>	CD0104
<b>Poles</b>	02
<b>Leads</b>	12#10
<b>Proprietary</b>	False
<b>Created date</b>	03-01-2021

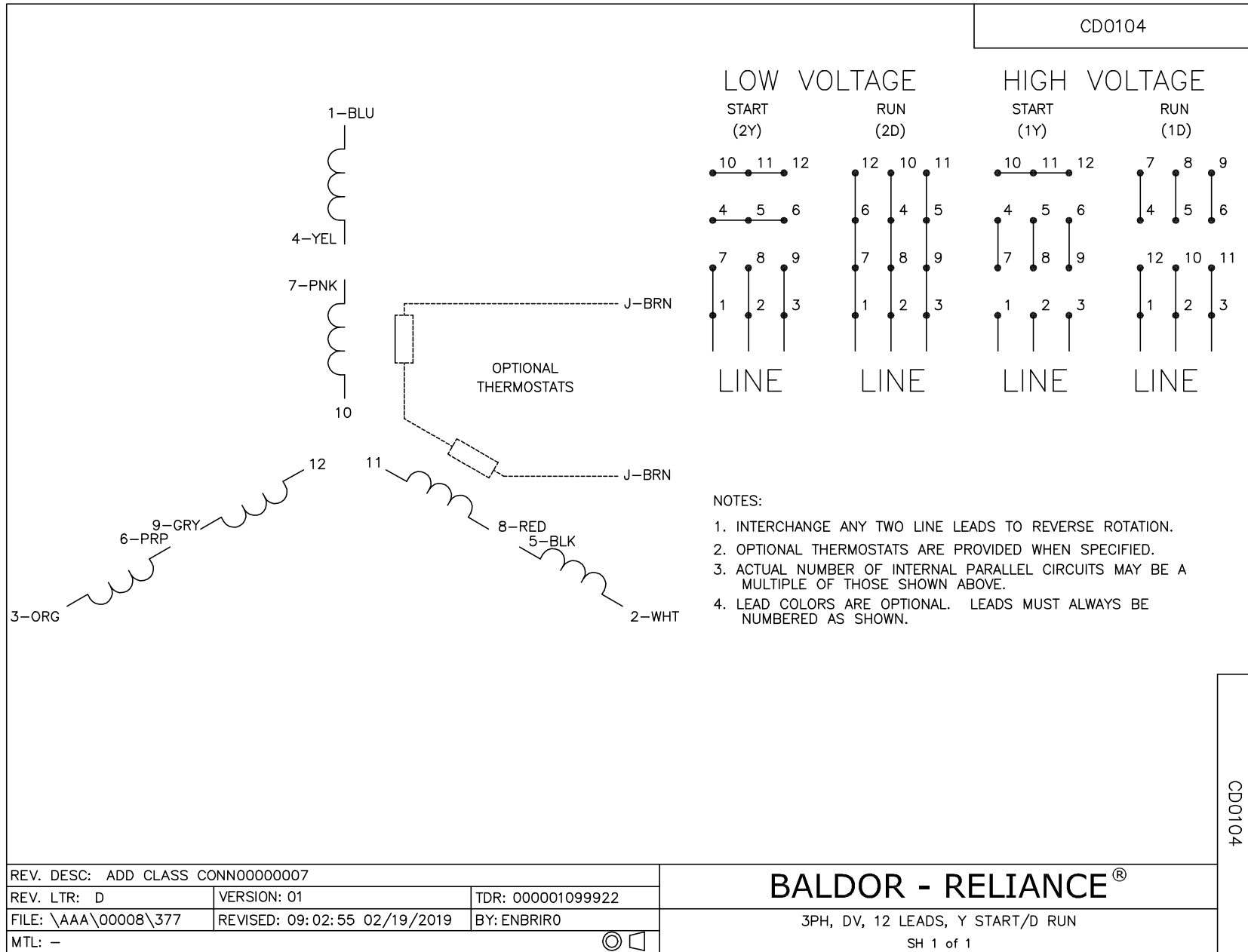
<b>Electrically Isolated Bearing</b>	Not Electrically Isolated
<b>Feedback Device</b>	NO FEEDBACK
<b>Heater Indicator</b>	No Heater
<b>High Voltage Full Load Amps</b>	28.0 a
<b>Insulation Class</b>	F
<b>KVA Code</b>	F
<b>Lifting Lugs</b>	Vertical Lifting Lugs
<b>Locked Bearing Indicator</b>	Locked Bearing
<b>Motor Lead Termination</b>	Flying Leads
<b>Motor Standards</b>	NEMA
<b>Motor Type</b>	3934M
<b>Mounting Arrangement</b>	F1
<b>Number of Poles</b>	2
<b>Overall Length</b>	28.07 IN
<b>Power Factor</b>	88
<b>Product Family</b>	General Purpose
<b>Pulley Face Code</b>	C-Face
<b>Rodent Screen</b>	Included
<b>Service Factor</b>	1.15
<b>Shaft Diameter</b>	1.250 IN
<b>Shaft Ground Indicator</b>	No Shaft Grounding
<b>Shaft Rotation</b>	Reversible
<b>Speed</b>	3515 rpm
<b>Speed Code</b>	Single Speed
<b>Starting Method</b>	Wye Start - Delta Run
<b>Thermal Device - Bearing</b>	None
<b>Thermal Device - Winding</b>	None
<b>Vibration Sensor Indicator</b>	No Vibration Sensor
<b>Winding Thermal 1</b>	None
<b>Winding Thermal 2</b>	None

**Nameplate**

**NP3454L**

<b>CAT.NO.</b>	VJPFPM2516T	<b>CUST P/N</b>		<b>I.P.</b>	23
<b>SPEC.</b>	39-0000-0385	<b>SER.NO.</b>		<b>FRAME</b>	256JP
<b>HZ</b>	60	<b>HP</b>	25	<b>RPM</b>	3515
				<b>HZ</b>	50
				<b>HP</b>	20
				<b>RPM</b>	2920
<b>VOLTS</b>	230/460	<b>CODE</b>	F	<b>VOLTS</b>	190/380
				<b>CODE</b>	F
<b>AMPS</b>	58/29	<b>DES</b>	B	<b>AMPS</b>	56/28
				<b>DES</b>	B
<b>EFF</b>	91	<b>SER.F.</b>	1.15	<b>PF</b>	88
				<b>EFF</b>	90.2
				<b>SER.F.</b>	1.15
				<b>PF</b>	88
<b>RATING</b>	40C AMB-CONT	<b>DE BRG</b>	6309	<b>GREASE</b>	POLYREX EM
<b>BLANK</b>		<b>ODE BRG</b>	6208	<b>MTR. WT.</b>	213
		<b>CLASS</b>	F	<b>PH</b>	3
		<b>ENCL</b>	OPSB	<b>CC</b>	010A
<b>HTR-VOLTS</b>		<b>HTR-AMPS</b>		<b>HTR-WATTS</b>	





REV. DESC: ADD CLASS CONN00000007		
REV. LTR: D	VERSION: 01	TDR: 000001099922
FILE: \AAA\00008\377	REVISED: 09:02:55 02/19/2019	BY: ENBRIRO
MTL: -	© □	

BALDOR - RELIANCE®

3PH, DV, 12 LEADS, Y START/D RUN

SH 1 of 1

CD0104